



Members of the Association of British Travel Agents and the International Air Transport Association

# Epsom Travel News

Epsom Travel

H.R. Richmond Ltd

Epsom Coaches

Travel Offices in Epsom, Leatherhead and Banstead

## Epsom Travel Open in Banstead

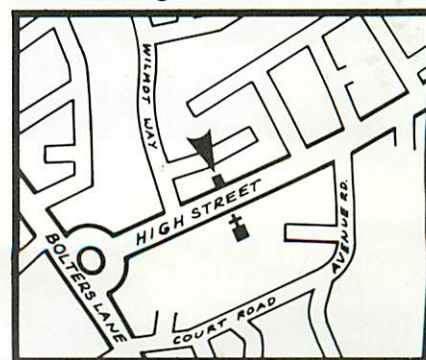
### A Comprehensive Personal Travel Service in the High Street

Epsom Travel are pleased to announce the opening of a new travel office opposite All Saints' Church at 67 High Street, Banstead on Monday, November 21. It aims to provide a highly individual service, offering advice, assistance and arrangements for all types of holidays and travel both in the UK and worldwide.

The new office is an important

expansion by the Epsom-based parent company, H R Richmond Ltd, who already have well-established travel agencies in Epsom and Leatherhead. H R Richmond Ltd, an independent family-run concern who also run Epsom Coaches, have been in the travel business for more than 60 years and their travel agency staff have extensive experience of all aspects of international travel. As well as arranging holidays of all types, from the popular and economical 'packages' to the most elaborate of individual itineraries, the service provided by Epsom Travel includes air, coach, ferry and rail tickets, car hire, passports, visas, currency

and insurance, as well as theatre and concert bookings. They also offer a group travel service for the benefit of local organisations and clubs, enabling them to travel comfortably and economically to the locations and events of their choice. They are also pleased to assist local businesses with their travel arrangements.



The Manager of the Epsom branch of Epsom Travel, Mr Colin Wyeth, is taking charge of the new Banstead office, assisted by Mrs Joy Easthope and her staff. Between them, Colin and Joy have more than 40 years' travel industry expertise to place at the disposal of their new Banstead clientele. Prospective customers have the reassurance of knowing that they are dealing with an experienced and reputable local company who are recognised members of ABTA, the Association of British Travel Agents, and IATA, the International Air Transport Association, both symbols of holiday and travel reliability.

**Epsom Travel**  
67 High Street, Banstead.  
Tel: Burgh Heath (07373) 60324



### What's in a name?

#### CHANGE OF NAME FOR LEATHERHEAD BRANCH

The Company's travel agency in Leatherhead, close to the Thorndike Theatre in the centre of the town, is changing its name from Crescent Travel to Epsom Travel in the interests of uniformity.

It will continue to be managed by Mr Len Spencer, whose travel experience spans more than 30

years, 12 of them at Crescent, and the staff remain unchanged. The name change is a logical step towards a corporate identity preceding the opening of the Banstead office.

**Epsom (formerly Crescent) Travel**  
17 Church Street, Leatherhead.  
Telephone:  
Leatherhead (0372) 376082

### Guide to Services EPSOM TRAVEL

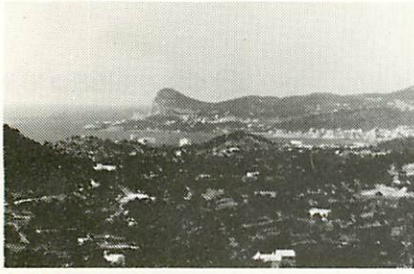
- Air Tickets ● British Rail Tickets
- Business Travel ● Car Hire ● Coach Bookings ● Continental Rail Tickets
- Cross-Channel Ferry Bookings
- Cruises ● Foreign Currency ● Group Travel ● Inclusive Holidays
- Independent Tours ● Insurance
- Passports ● Theatre and Concert Tickets ● Visas

### EPSOM COACHES

- UK & Continental Holiday Tours ● The Riviera Express ● Day Excursions to France ● Coastal Express Services
- Day, Afternoon and Evening Excursions
- London Commuter Services ● Private Coach Hire.

# Epsom Travel Holiday Competition

## WIN A FREE HOLIDAY VOUCHER



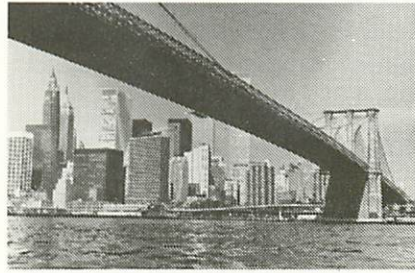
A. Name this Spanish island



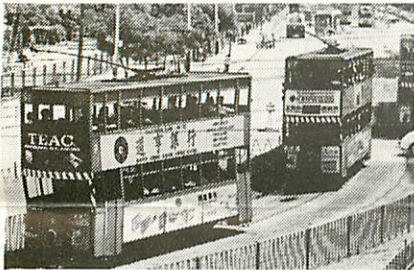
B. Name this Venetian palace



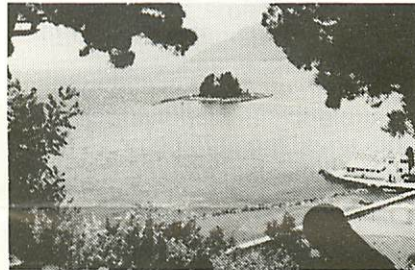
C. Name this European city



D. Name this New York bridge



E. Name this British colony



F. Name this Mediterranean island

Correctly identify these six photographs and you could win one of the following prizes—

**1st Prize:** A voucher for £100 to be used on any Thomson holiday.

**2nd Prize:** A day trip to France for two.

**3rd Prize:** A bottle of Champagne.

*Conditions:* After writing your answers in the space provided, place your entry in the special Epsom Travel Holiday Competition box in your nearest branch of Epsom Travel no later than Saturday, December 31, 1983. There will be a draw and the first three answers deemed correct in the opinion of the judges, appointed by Epsom Travel, shall be the winners. No employees of H.R. Richmond or their families may participate.

No correspondence can be entered into relating to this competition.

Name \_\_\_\_\_

Address \_\_\_\_\_

Tel: \_\_\_\_\_

## Epsom's First Travel Agency

H R Richmond Ltd, parent company of Epsom Travel, opened the Town's first travel agency back in the 1950s in South Street.

Some 15 years ago it moved to its present address next door to the Spread Eagle in the very centre of the Town, under the managership of Colin Wyeth, and established a pattern of providing a high standard of personal service covering every aspect of travel and holidays.

Over the years it has consolidated this reputation for service not only among its many individual customers but also among local clubs and organisations for whom it has arranged special tours. These have ranged from trips to the Holy Land by a local church to a visit to California by a local speedway club.

Between them, the six-strong staff are qualified to provide holiday advice covering virtually every continent in the world. They are always pleased to discuss your individual holiday preferences.

**Epsom Travel**  
**1 Ashley Road, Epsom**  
**Tel: Epsom (03727) 26363**

## Charabancs to Computers in Three Generations

The purchase of a 'charabanc' and the lease of a garage in Epsom High Street in 1920 were the modest beginnings of the company which today runs the largest independent coaching organisation in Surrey as well as the expanding Epsom Travel business.

H R Richmond, the company's founder, gradually built up the business. In time he was joined by his second son, R B Richmond, the present Managing Director; in turn, the latter's two sons and daughter have entered the thriving concern.

Being a family business does not mean living in the past; on the contrary, Epsom Coaches were one of the first coach operators

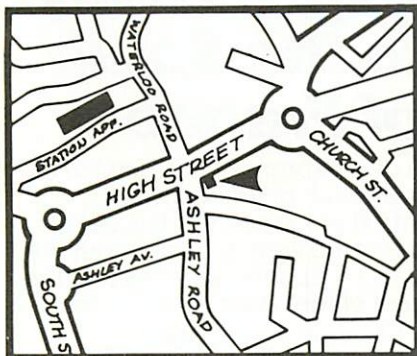
in the country to introduce a computerised reservations system and their fleet of nearly 50 vehicles includes the most modern on the road, incorporating the latest features in coaching comfort.

The total staff of H R Richmond Ltd, including Epsom Coaches and Epsom Travel, numbers almost 100. More than half are their regular drivers, whose reliability and loyalty is reflected by the fact that they average more than 10 years' service a man.

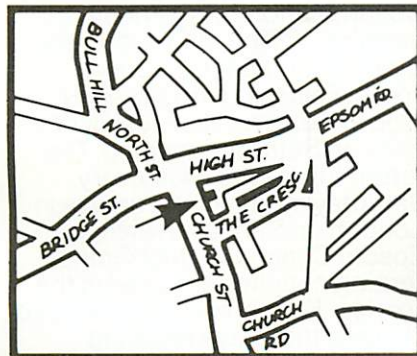
The staff also includes a team of skilled mechanics in the company's extensive workshops complex in Epsom where all the company's vehicles are regularly serviced and maintained.

## Where to find us

### EPSOM



### LEATHERHEAD



## For Commuters— The COMFORTABLE Choice

For those who like to commute in comfort, Epsom Coaches operate regular weekday return services between Surrey and London by luxury coach.

Fares are at least one third lower than on equivalent rail services and the journey time is not much longer; in fact, in the case of those services which go into the City and the West End, where it eliminates the need to change to bus or tube it can be shorter. Since Epsom Coaches introduced their commuter services nearly three years ago not once has a journey been cancelled.

The three routes currently served are:

#### Service 1

Great Bookham, Fetcham, Leatherhead, Ashted, Epsom, West Ewell and Ewell to and from Waterloo, Aldwych and St. Paul's.

#### Service 2

Dorking, Brockham, Betchworth, Buckland, Reigate, Lower Kingswood, Tadworth and Banstead to and from Waterloo, Aldwych and St. Paul's.

#### Service 3

Tattenham Corner, Epsom, Ewell Court and Ewell to and from Victoria (Coach Station) and Hanover Square.

# Worldwide Holiday Opportunities

"There has never been a better time to book a holiday," says Colin Wyeth, Manager of Epsom Travel's new Banstead office.

"The £ is strong, prices are more stable than they have been for years and quite a number of tours are actually cheaper than they were a year ago," he adds encouragingly.

Colin says that inclusive tours offer particularly good value at present. By way of example, he cites those to the Mediterranean islands of Spain and Greece, the beach resorts of Italy and North Africa, or those to the beautiful Alpine resorts of Austria and Switzerland. Fly-drive holidays, particularly to North America, are popular at present and very good value.

For those wanting to renew their suntans during the autumn and winter months he recommends one of the fly-cruise holidays to the Caribbean or the Far East; for those preferring to keep their feet on dry land, Colin suggests Morocco, the Canary Islands and Gambia or, for the more adventurous, a safari holiday in East Africa.

Group travel enthusiasts are offered a wide and interesting choice, ranging from youth and activity holidays in the UK and Europe to escorted tours to, for example, Italy, Greece, China, South America and India. Whatever your preference, Colin

and his staff have a wide selection of brochures and prices and a wealth of advice to offer.

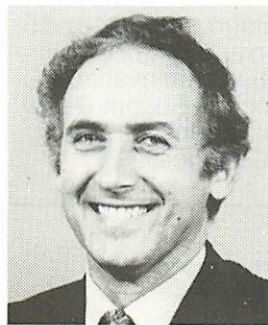
### Holiday Individuality

By no means everybody fancies the idea of an inclusive holiday, however attractive the 'package.' For them, Epsom Travel are able to offer an individual service which includes car ferry bookings, hotel reservations, hire cars, visas, passports, currency, insurance, or any other holiday or travel requirement, and the service is speedy and reliable. Meanwhile, for those travelling individually to visit relatives or friends abroad, Epsom Travel can book economical APEX air fares offering substantial reductions on normal prices, provided that bookings are made one month in advance and the dates adhered to.

### UK Holiday Opportunities

For those who like to holiday in Britain Epsom Travel are ready to provide you with a wide choice of prices and possibilities, whether for island holidays, coach tours or bargain breaks. And, talking of coach tours, their sister company Epsom Coaches offer what is probably the most comprehensive programme of UK holiday tours of any coach operator in the country; for details ask for their 1984 UK and Continental Holidays brochure.

## Who's Who at Epsom Travel



Colin Wyeth



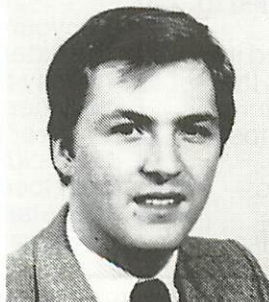
Len Spencer (Leatherhead)



Brenda Arter (Epsom)



Joy Easthope (Banstead)



Mark Gravett (Leatherhead)



Mary Tilbury (Epsom)

# UK and Continental Coach Tours

## QUALITY, VARIETY AND INDIVIDUALITY

Thirty years experience of operating holiday tours have given Epsom Coaches a fairly clear idea of what it takes to make a memorable holiday. During the months of planning which lies behind each new season's programme, the guiding principle is that every tour must provide three things—quality, variety and individuality.

The programme for 1984, just published, promises to be the best yet. With numerous new additions, it is the most extensive so far, and offers a total of 90 different tours from two to ten days' duration.

It caters for every taste—for the country or the coast, the restful or the entertaining, the old or the new. And, whilst most of the tours are to locations throughout Britain, there are tours to no fewer than eight countries, from as far north as Norway down to the southern part of France.

Whatever the destination, what all the tours have in common is the traditionally high standard of comfort which Epsom Coaches aim to achieve in every respect—from the calibre of the coaches, all of which are comfortable and

modern, to the quality of hotels which in virtually every case is to AA3-star standard in rooms with private bathrooms.

Although high standards do not equate with cheap holidays, nevertheless Epsom Coaches are at pains to ensure that they provide excellent value for money. Indeed, their prices—only marginally up on last year's, by the way—are exceptionally reasonable when it is remembered that they include the following: travel (including all excursions), comprehensive holiday insurance, service charges, VAT, portage where available, and hotel accommodation including bed and breakfast and, in almost every case, dinner as well. Copies of Epsom Coaches 1984 UK and Continental Holiday Tours brochure are now available from any branch of Epsom Travel, from your local Epsom Coaches agency (of whom there are more than 100 locally), or direct from—

**Epsom Coaches**  
**Blenheim Road, Epsom**  
**Telephone:**  
**Epsom (03727) 27821**

## Somewhere different daily

Epsom Coaches run an interesting and varied programme of day, afternoon and evening excursions providing opportunities for getting out and about to somewhere refreshingly different almost every single day of the year.

Although the main emphasis is on the familiar favourites, from Leeds Castle to the economical day trips to France, there are a number of excursions which are distinctly original—and every year something new is added to the programme.

The excursions are covered in two separate publications, the May-to-December programme with its emphasis on day trips, and the January-to-April programme which includes the wintertime shows and pantomimes. The former also

lists the regular express services to the coast which operate regularly during the summer season on five main routes:

1. Brighton, Hove and Worthing;
  2. Eastbourne, Bexhill and Hastings;
  3. Canterbury, Ramsgate, Broadstairs and Margate;
  4. Bournemouth;
  - and 5. Littlehampton and Bognor.
- Both publications are available from any branch of Epsom Travel, from your local agent, or direct from Epsom Coaches.

## On Your Doorstep!

For your convenience, most of the extensive programme of holiday tours and excursions provided almost daily throughout the year by Epsom Coaches have pick-up and return points in your locality. Ask your local agent for details, or call in at any branch of Epsom Travel.

## New Expressway to the South of France

A new express coach service to the South of France was introduced recently. It is being operated weekly throughout the year by Epsom Coaches and the cost of the round trip is under £100—overnight hotel accommodation included.

The **Riviera Express** leaves from Epsom for London's Victoria Coach Station every Friday morning, calling at Croydon and Dover en route for the sunny south. Following an overnight stop at Auxerre, Nice is reached early on Saturday evening. The return trip leaves Nice every Saturday morning and arrives in London on Sunday evening. Epsom Coaches' latest Grand Touring coaches are used in the service. British-bodied on a Volvo chassis, they have reclining seats, air suspension, air conditioning, tinted windows, toilet/washroom and refreshment facilities.

## Private Hire

# A COACH OF YOUR OWN!

The private hire of coaches to local organisations and private individuals has been an important part of the Company's business for many years. Coaches available for hire range from 18- to 55- seaters and hire periods can be as long or as short as the customer requires, from an evening visit to a London show to an extensive European tour. Incidentally, meal and theatre reservations, cross Channel ferry bookings, documentation and so on, are all part of the service.

The coaches are manned by Epsom Coaches' experienced, uniformed drivers, and hire costs—which are inclusive of such items as parking fees and comprehensive insurance—are extremely reasonable. Full details are contained in the Private Hire brochure, freely available on request.