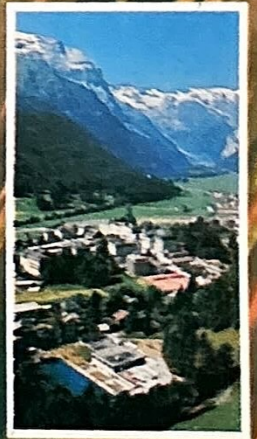
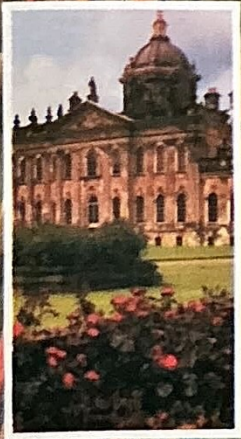


2-10 day British & Continental tours 1983

Epsom Coaches

Established 1920



Surrey's Leading Coach Operator

Departure Points

Ashted Street Bus Stop*
Banstead Opposite Post Office, High Street
Carshalton Carshalton Hall, High Street*
Cheam Village Clouseau's, 8 Ewell Road*
Chessington North Opposite Railway Station
Coulsdon Opposite Fairtax Travel, 216 Brighton Road
Drift Bridge Bus Stop opposite Hotel, Reigate Road
Epsom Public Library, Waterloo Road
Ewell Spring Bus Stop, opposite Bourne Hall
Fetcham Opposite Post Office, Cobham Road
Great Bookham Opposite Beckley Parade, Guildford Road
Great Bookham Opposite Crown Public House, Lower Road
Hampton Wick Opposite J & A Offer, Estate Agent, 2 High Street
Hook White Hart Public House, Hook Road
Kingston Abbey National Building Society, 59 Eden Street
Leatherhead War Memorial, North Street*

Morden Bus Stop by London Electricity Board Shop, 37 London Road*
New Malden Malden Road, opposite junction with Blakes Lane
North Cheam Woolworth, 514 London Road
Raynes Park Reynolds, Estate Agent, 44 Coombe Lane
Rose Hill Woolworth, Rose Hill*
South Wimbledon Bus lay-by by Spur Garage, 14 Morden Road*
Surbiton Freeman Hardy Willis, Victoria Road
Sutton St. Nicholas Church, St. Nicholas Way
Tolworth Bus lay-by on A3 slip road by Plessey's
Twickenham Cross Deep, junction with Poulett Gardens
Wallington Old Town Hall, Woodcote Road*
West Ewell Chessington Road, junction with Green Lanes*
Wimbledon Town Hall, The Broadway*
Worcester Park Opposite Britannic Travel, 124 Central Road
 *Please check the side of the road when booking.

Seating Plan

Door		Drift	
1	2	3	4
5	6	7	8
9	10	11	12
13	14	15	16
17	18	19	20
21	22	23	24
25	26	27	28
29	30	31	32
33	34	35	36
37	38	39	40
41	42	43	44
45	46	Door	
49	50	47	48

If there is insufficient demand, coaches with 30 reclining seats may be operated on some departures. Smokers will always be seated at the back of the coach.



Epsom Coaches has been established since 1920. Today, we are still a family concern and the largest independent coach operator in Surrey.

The tour brochure is published in early November each year. If you have been on a tour the previous year, you will be sent a copy. Some departures get booked very quickly and it is advisable to book as soon as possible to avoid disappointment. You can register for tours before the brochure comes out.

We thank last year's passengers for filling in the questionnaires and are sorry we do not have time to send acknowledgements. The information was very useful when planning this brochure.

Prices have gone up little compared to the previous year. We hope you find the 1983 brochure interesting and look forward to welcoming you.

Local Departures

Travelling with Epsom Coaches, you have the convenience of local departure points. There are no feeder services and you will stay on the same coach throughout the tour (except Guernsey). For the first time in our tour brochure, we include departure points in Hampton Wick, Morden, Raynes Park, South Wimbledon, Tolworth, Twickenham and Wimbledon.

Driver/Couriers

Much of our reputation has been built on the care and courtesy of our uniformed driver/couriers. Our drivers have been specially selected for a job that combines driving skills with a pleasant personality plus a knowledge of all the places you pass through and visit. We try to keep the same drivers on the same tours and you can relax and let them take care of the arrangements.

Coaches

Our touring coaches have reclining seats, overhead racks for hand baggage, reading lamps, individual forced-air ventilation and wide panoramic windows with tinted glass. Some of the newer coaches have air suspension and turbo-charged engines; also double-glazing, curtains, glove nets and carpets. All coaches are regularly serviced and inspected in our modern workshop.

Hotels

We endeavour to keep the standard of hotels as high as possible. Most hotels are 3-star and rooms with private facilities are standard or offered as a supplement. The majority of hotels have been used by our company for many years and where possible, we select the most central and scenic locations.

Please see the note on the back page regarding 'hotels and refreshment stops'.

Smoking

For the comfort of non-smokers, smoking is restricted to the back section of the coach.

Groups

Small groups are welcome on our tours. If you wish to hire a coach privately, we will be pleased to give you a quotation.

Association of British Travel Agents

When you book a tour with our company, you have the extra assurance that Epsom Coaches is a bonded member of the Association of British Travel Agents.

Bookings and Enquiries

We offer a selection of 50 tours and it is worth spending plenty of time studying the brochure before making a booking. Generally, the British tours are more leisurely than those to the Continent. We would be pleased to help you should you have any queries or require further information.

If you wish to check availability, please telephone Epsom (03727) 27821. Our reservations system is fully computerised for fast and efficient handling of all enquiries.

Prices include

- *Reserved seat on an Epsom Coach (see seating plan on page 2).
- *The tour itinerary as shown in this brochure. We make no extra charge for excursions.
- *Hotel accommodation based on twin-bedded rooms. Single rooms are offered as a supplement and triple rooms are usually available on request.
- *Table d'hote evening dinners (except Paris) and full cooked breakfasts in Britain (usually Continental breakfasts on Continental tours).
- *Service charges required by hotels and restaurants.
- *Porterage, where available, from the local departure point. At just a few hotels the service is not available; at the rest your case will be taken to and from your room.
- *The services of our experienced driver/courier.
- *Ferry transportation charges where applicable. Except on Scandinavian tours, overnight ferry crossings are not used on any tour.
- *Value Added Tax as at 1st September 1982.
- *Comprehensive holiday insurance meaning you can travel with peace of mind (see page 30). You are covered from the time you pay your deposit.

Computerised reservations



England

- Autumn in the New Forest 3 days **p.8**
- Bath 3 days **p.7**
- Blackpool Illuminations 2 days **p.13**
- Blackpool Illuminations & Lake District 3 days **p.13**
- Border Country 5 days **p.16**
- Bournemouth 3 days **p.8**
- Chester 3 days **p.13**
- Cotswolds 3 days **p.10**
- Derbyshire Peaks and Dales 3 days **p.12**
- Devon and Cornwall 4 days **p.5**
- East Anglia 3 days **p.12**
- Heart of England 3 days **p.11**
- Isle of Wight 5 days **p.9**
- Lake District 4 days **p.15**
- Ludlow Weekend 3 days **p.11**
- Luxury Weekend ***** 2 days **p.9**
- North Devon 3 days **p.7**
- St. Ives 8 days **p.5**
- Sidmouth 4 days **p.6**
- Springtime in Kent 2 days **p.10**
- Stately Homes and Gardens 3 days **p.14**
- Torquay 8 days **p.6**
- York 4 days **p.14**
- Yorkshire 8 days **p.15**

Wales

- The Gower and Pembrokeshire Coast 3 days **p.19**
- Llandudno 6 days **p.17**
- North Wales Coast and Snowdonia 4 days **p.16**
- Tenby 8 days **p.18**
- Welsh Coast and Mountains 5 days **p.17**
- A Welsh Welcome 2 days **p.18**

Scotland

- Grand Tour of Scotland 8 days **p.19**
- Loch Lomond, Trossachs and Edinburgh 5 days **p.20**
- Oban and Western Highlands 8 days **p.20**
- Royal Deeside 8 days **p.21**

Channel Islands

- Guernsey by Sea 6 days **p.21**

Continent

- Austrian Tyrol 10 days **p.29**
- Brittany 5 days **p.24**
- Champagne Country 3 days **p.22**
- The Dordogne 9 days **p.24**
- Dutch Bulbfields 3 days **p.25**
- French Chateau Weekend 2 days **p.22**
- Holland 5 days **p.26**
- Holland in Springtime 4 days **p.25**
- Home of Hans Andersen 5 days **p.27**
- Normandy and the Loire Valley 5 days **p.23**
- Norway 7 days **p.27**
- Paris 3 days **p.22**
- Paris 5 days **p.23**
- Rhine and Moselle Valleys 5 days **p.26**
- Swiss Lakes and Mountains 8 days **p.28**

1983 Programme

February

Sat 19 A Welsh Welcome 2 days p.18

March

Sat 5 Luxury Weekend ***** 2 days p.9
 Fri 11 Bath 3 days p.7
 Sat 19 French Chateau Weekend 2 days p.22
 Fri 25 Ludlow Weekend 3 days p.11

April

Fri 1 Sidmouth at Easter 4 days p.6
 North Wales Coast and Snowdonia 4 days p.16
 Fri 8 Paris 3 days p.22
 Dutch Bulbfields 3 days p.25
 Tues 12 Bournemouth 3 days p.8
 Fri 15 Holland in Springtime 4 days p.25
 Tues 19 Stately Homes and Gardens 3 days p.14
 Fri 22 Dutch Bulbfields 3 days p.25
 Tues 26 Cotswolds 3 days p.10
 Thur 28 Guernsey by Sea 6 days p.21
 Fri 29 The Gower and Pembrokeshire Coast 3 days p.19
 Holland in Springtime 4 days p.25
 Sat 30 Springtime in Kent 2 days p.10

May

Tues 3 North Devon 3 days p.7
 Fri 6 Dutch Bulbfields 3 days p.25
 Sat 7 Springtime in Kent 2 days p.10
 Mon 9 Paris 5 days p.23
 Tues 10 York 4 days p.14
 Thur 12 Lake District 4 days p.15
 Sat 14 St. Ives 8 days p.5
 Tues 17 Chester 3 days p.13
 Thur 19 North Wales Coast and Snowdonia 4 days p.16
 Sat 21 Oban and Western Highlands 8 days p.20
 Swiss Lakes and Mountains 8 days p.28
 Mon 23 Isle of Wight 5 days p.9
 Tues 24 Home of Hans Andersen 5 days p.27
 Sat 28 Derbyshire Peaks and Dales 3 days p.12
 Torquay 8 days p.6
 The Dordogne 9 days p.24
 Tues 31 Heart of England 3 days p.11

June

Fri 3 East Anglia 3 days p.12
 Mon 6 Llandudno 6 days p.17
 Loch Lomond, Trossachs and Edinburgh 5 days p.20
 Thur 9 Devon and Cornwall 4 days p.5

Fri 10 Paris 3 days p.22
 Sat 11 Royal Deeside 8 days p.21
 Mon 13 Norway 7 days p.27
 Tues 14 Lake District 4 days p.15
 Fri 17 The Gower and Pembrokeshire Coast 3 days p.19
 Austrian Tyrol 10 days p.29
 Sat 18 Yorkshire 8 days p.15
 Mon 20 Border Country 5 days p.16
 Fri 24 Bournemouth 3 days p.8
 Mon 27 Rhine and Moselle Valleys 5 days p.26
 Tues 28 Cotswolds 3 days p.10

July

Fri 1 North Devon 3 days p.7
 Sat 2 Grand Tour of Scotland 8 days p.19
 Mon 4 Brittany 5 days p.24
 Fri 8 Stately Homes and Gardens 3 days p.14
 Mon 11 Welsh Coast and Mountains 5 days p.17
 Paris 5 days p.23
 Thur 14 Lake District 4 days p.15
 Sat 16 Swiss Lakes and Mountains 8 days p.28
 Tues 19 North Wales Coast and Snowdonia 4 days p.16
 Fri 22 Heart of England 3 days p.11
 Sat 23 Oban and Western Highlands 8 days p.20
 Mon 25 Loch Lomond, Trossachs and Edinburgh 5 days p.20
 Thur 28 York 4 days p.14

August

Tues 2 East Anglia 3 days p.12
 Sat 6 Royal Deeside 8 days p.21
 Tues 9 Sidmouth 4 days p.6
 Fri 12 The Gower and Pembrokeshire Coast 3 days p.19
 Austrian Tyrol 10 days p.29
 Tues 16 Lake District 4 days p.15
 Fri 19 Paris 3 days p.22
 Mon 22 Border Country 5 days p.16
 Sat 27 Torquay 8 days p.6
 Cotswolds 3 days p.10
 Tues 30 Derbyshire Peaks and Dales 3 days p.12

September

Thur 1 Devon and Cornwall 4 days p.5
 Sat 3 Tenby 8 days p.18
 Grand Tour of Scotland 8 days p.19
 Mon 5 Loch Lomond, Trossachs and Edinburgh 5 days p.20
 Holland 5 days p.26

Fri 9 Stately Homes and Gardens 3 days p.14
 Sat 10 Oban and Western Highlands 8 days p.20
 Swiss Lakes and Mountains 8 days p.28
 Mon 12 Welsh Coast and Mountains 5 days p.17
 Tues 13 Home of Hans Andersen 5 days p.27
 Thur 15 Lake District 4 days p.15
 Fri 16 Blackpool Illuminations and Lake District 3 days p.13
 St. Ives 8 days p.5
 Sat 17 Paris 5 days p.23
 Mon 19 North Wales Coast and Snowdonia 4 days p.16
 Fri 23 Heart of England 3 days p.11
 Sat 24 Blackpool Illuminations 2 days p.13
 Mon 26 Isle of Wight 5 days p.9
 Normandy and the Loire Valley 5 days p.23
 Fri 30 Blackpool Illuminations and Lake District 3 days p.13

October

Tues 4 Autumn in the New Forest 3 days p.8
 Fri 7 Champagne Country 3 days p.22
 Sat 8 Blackpool Illuminations 2 days p.13
 Mon 10 Rhine and Moselle Valleys 5 days p.26
 Tues 11 Sidmouth 4 days p.6
 Fri 14 Blackpool Illuminations and Lake District 3 days p.13
 The Gower and Pembrokeshire Coast 3 days p.19
 Tues 18 Autumn in the New Forest 3 days p.8
 Thur 20 Guernsey by Sea 6 days p.21
 Fri 21 Cotswolds 3 days p.10
 Sat 22 Blackpool Illuminations 2 days p.13
 Tues 25 Bath 3 days p.7
 Thur 27 York 4 days p.14
 Fri 28 Paris 3 days p.22

November

Tues 1 Bournemouth 3 days p.8
 Sat 5 French Chateau Weekend 2 days p.22
 Fri 11 Chester 3 days p.13
 Fri 18 Ludlow Weekend 3 days p.11
 Sat 26 Luxury Weekend ***** 2 days p.9

December

Sat 17 A Welsh Welcome 2 days p.18
 Fri 23 Christmas Tours (details available in July)
 Fri 30 New Year Tour (details available in July)

1984 Holiday Brochure available early November.

Christmas and the New Year

1982-83

- ★ SIDMOUTH AT CHRISTMAS 5 DAYS.
- ★ YORK AT CHRISTMAS 4 DAYS.
- ★ EDINBURGH IN THE NEW YEAR 4 DAYS.

PLEASE ASK FOR A LEAFLET.

1983-4

FULL DETAILS AVAILABLE IN JULY 1983.



Epsom Coaches

EXPRESS SERVICES & EXCURSIONS



Epsom Coaches

- ★ EXPRESS SERVICES TO BEXHILL, BOURNEMOUTH, BRIGHTON, BROADSTAIRS, CANTERBURY, EASTBOURNE, HASTINGS, HOVE, MARGATE, RAMSGATE AND WORTHING.
- ★ DAY, AFTERNOON & EVENING EXCURSIONS FROM JANUARY TO DECEMBER (INCLUDING DAY EXCURSIONS TO FRANCE).
- ★ LOCAL AGENTS & DEPARTURE POINTS.
- ★ FULL DETAILS IN OUR CURRENT BROCHURE.

PRIVATE HIRE

- ★ Modern fleet of 45 coaches with seating from 18 to 55, including 30 and 50 reclining seats.
- ★ Please telephone Epsom (03727) 25252 for a quotation.

Epsom Coaches



St. Ives

8 days £165.00

single room £175.00

supplement per person for room with private facilities and colour television £8.00

Prices include:

- Travel in coach with reclining seats.
- 7 nights dinner, bed and breakfast at the Chy-an-Drea Hotel, St. Ives (AA 3-star, Ashley Courtenay recommended, telephone 0736 795076).
- Comprehensive holiday insurance (see page 30)

First day We drive to Cornwall, stopping for coffee, lunch and tea and arriving early evening in St. Ives.

Sunday to Friday During our stay, we will be visiting the following: **Falmouth** A natural harbour winds inland among beech woods. Narrow streets and alleys climb from the quayside to the terraces where once lived the captains of the old mail-carrying packet ships. There are beautiful gardens with palm trees and sub-tropical flowers. **Land's End** England's western-most point. There are high wild granite cliffs and a mile out to sea Longships Lighthouse. **Lizard** Southern extremity of England. Majestically beautiful coast with soaring cliffs and pinnacles of rock stretching down to Lizard Point. **Mousehole** Old Cornish village with colour-washed and granite houses surrounding a small harbour. The coach cannot enter the village so a little walking is required. **Newquay** The 'new' quay dates from the 16th century, when it was found necessary to provide a new harbour for the prosperous fishing town of Towan Blystra. Tourism gradually replaced pilchard fishing as the town's livelihood after the arrival of the railway in 1876. **Padstow** A picturesque resort on the estuary of the Camel River. The old town is a labyrinth of crooked streets sloping to the harbour, where there has been a ferry since the 15th century. **St. Michael's Mount** (National Trust extra charge). With its superb castle, St. Michael's Mount rises out of the sea. It is reached on foot over a causeway or by ferry. **Scilly Isles** (extra charge). You will have a chance to go on an excursion to the Scilly Isles which are clustered almost 30 miles south-west of Land's End. They are steeped in history and have a charm that is unforgettable. **Last day** We leave after breakfast and return to Surrey, stopping for coffee, lunch and tea. Home approximately 2000.



St. Ives

St. Ives The colourful Cornish fishing port is popular with artists and fishermen. There is a labyrinth of narrow twisting streets, cobbled passages, archways and old cottages. Shops and restaurants surround the harbour and its fishing boats.

Chy-an-Drea Hotel The quiet hotel has been in the same family ownership since 1960 and commands magnificent views of Porthminster Beach, St. Ives Bay, the town and coastline. There is a main lounge, television room and attractive dining room with superb views. All bedrooms have tea/coffee making facilities.

Sat 14 May

0705	Epsom
0715	Drift Bridge
0720	Banstead
0730	Wallington
0735	Carshalton
0745	Sutton
0755	North Cheam
0800	Worcester Park
0805	New Malden
0810	Tolworth
0815	Surbiton
0820	Kingston

Sat 17 September

0705	Raynes Park
0710	Wimbledon
0715	South Wimbledon
0720	Morden
0725	Rose Hill
0735	Sutton
0745	Cheam Village
0750	Ewell
0755	West Ewell
0800	Epsom
0810	Ashted
0815	Leatherhead
0820	Great Bookham*

*opposite Beckley Parade only

Devon and Cornwall

4 days £118.00

single room £124.00

Prices include:

- Travel in coach with reclining seats.
- 3 nights dinner, bed and breakfast at the Hannafore Point Hotel, West Looe (AA 3-star, Ashley Courtenay recommended, all rooms with private bathroom, telephone 050 36 3273).
- Comprehensive holiday insurance (see page 30).

Thursday We go by way of the Hog's Back and Winchester to Stockbridge for coffee; then continue via Salisbury, Shaftesbury and Blackmoor Vale to Sherborne for lunch. Sherborne is a mellow, stone-built town with an ancient Abbey Church, castle ruins, almshouses and famous school. Later, we drive through Yeovil, Crewkerne and Chard, by-passing Exeter and Plymouth and arriving early evening in West Looe. The Hannafore Point Hotel is set in the loveliest part of West Looe with unspoilt views of the glorious coastline, yet only minutes away from the old town and ever-changing river and harbour scenes. There is a swimming pool and all bedrooms have colour television and tea/coffee making facilities.

Friday After a late start, we go via Lostwithiel, St. Austell and Truro to Falmouth for lunch. The town has a natural harbour which winds inland among beech woods. Narrow streets



Replica of the Speedwell, Plymouth

and alleys climb from the quayside to the terraces where the captains of old mail-carrying packet ships once lived. There are beautiful gardens with palm trees and sub-tropical flowers.

Saturday The morning is at leisure in Looe. The resort is at the mouth of the River Looe, which flows through a deep wooded valley. West and East Looe are connected by a stone bridge. There is a colourful fishing harbour and many old buildings including the Jolly Sailor Inn. In the afternoon, there is a short

excursion to Plymouth. It was from Plymouth that the Mayflower sailed to America; also here where Sir Francis Drake finished his game of bowls before sailing to fight in the Spanish Armada. The old town still lives in the Barbican, a picturesque area of narrow streets, Elizabethan houses and fishing quays. Plymouth Hoe is perhaps the finest promenade in the country, overlooking Plymouth Sound and the Cornish coast.

Sunday We drive across Dartmoor National Park, famous for its rugged, desolate scenery – via Yelverton, Two Bridges and Moretonhampstead. The lunch stop is in Exeter, the Devon capital, which has many historic buildings including Tudor and Stuart houses, Georgian crescents and a magnificent cathedral with twin Norman towers. Later, we continue via Ilminster and Mere across the Salisbury Plain, stopping for tea. Home approximately 2030.

Thur 9 June

0705	Epsom
0715	Drift Bridge
0720	Banstead
0730	Wallington
0735	Carshalton
0745	Sutton
0755	North Cheam
0800	Worcester Park
0805	New Malden
0810	Tolworth
0815	Surbiton
0820	Kingston

Thur 1 September

0705	Raynes Park
0710	Wimbledon
0715	South Wimbledon
0720	Morden
0725	Rose Hill
0735	Sutton
0745	Cheam Village
0750	Ewell
0755	West Ewell
0800	Epsom
0810	Ashted
0815	Leatherhead
0820	Great Bookham*

*opposite Beckley Parade only

ENGLAND

Torquay

8 days £169.00

single room £179.00
supplement per person for room with private bathroom £9.00.

Prices include:

- Travel in coach with reclining seats.
- 7 nights dinner, bed and breakfast at the Bute Court Hotel, Torquay (AA 2-star, lift, telephone 0803 23771).
- Comprehensive holiday insurance (see page 30).

First day Stopping for coffee, we arrive in Sherborne for lunch. Sherborne is a beautiful old town with narrow winding streets and houses built in mellow stone. Later, we take a leisurely drive via Yeovil, Crewkerne and Chard to Torquay.

Sunday to Friday During our stay, we will be visiting the following: **Brixham** There are two parts of Brixham – the old village climbing a hill and the fishing harbour half a mile below. A stone on the quayside commemorates a key event in British history, the landing of William of Orange in 1688, which was the turning point in the 'Glorious Revolution'. The pier was built in 1799-1804, and there are some early 19th-century houses round the harbour. Most of the town centre is early Victorian, recalling the time when the Brixham fishing fleet was the most prosperous in south Devon. There are several local caves which were inhabited from the Stone Age to Roman times, notably Windmill Hill cave, discovered in 1858 (open to the public). **Buckfast Abbey** The Abbey was built by Benedictine monks and completed in 1938. At a nearby shop you can buy tonic wine and honey. **Castle Drogo** Situated near Chagford, the Castle was built by Sir Edwin Lutyens between 1910 and 1930. It is perhaps the last private house to be erected on this scale in Britain. Perched on a granite outcrop above the dramatic gorge of the River Teign, the Castle has wonderful views over the east side of Dartmoor. There is a terraced garden and miles of splendid walks. If you are not a member of the National Trust, admission is extra. **Dartmeet** The most famous beauty spot on Dartmoor, is where the East Dart and West Dart rivers meet. A 'clapper' bridge, a rough stone bridge typical of the West Country, crosses the bubbling, boulder-strewn East Dart



Torquay Harbour

a little way upstream from the modern bridge. **Dartmouth** The ancient port has many seafaring traditions. It is superbly situated on a hill on the west bank of the River Dart. Many interesting buildings include the remains of two castles. There is time to go on a boat excursion on the River Dart, thought by many to be the loveliest of Devon's rivers. **Exeter** The capital of Devon has many interesting buildings including Tudor and Stuart houses and Georgian crescents. Exeter Cathedral, with its twin Norman towers, is one of the finest examples of the Decorated period of Gothic architecture. **Looe** The resort is at the mouth of the River Looe, which flows through a deep wooded valley. West and East Looe are connected by a stone bridge. There is a colourful fishing harbour and many interesting old buildings including the Jolly Sailor Inn. **Last day** We leave Torquay and return via Ilminster, Mere and the Salisbury Plain. Stops will be made for coffee, lunch and tea. Home approximately 1900.

Torquay The popularity of the largest and most famous seaside resort in Devon dates from the 19th century, when the Napoleonic wars prevented many well-to-do people from taking their holidays on the Continent. Its superb panoramic setting – high wooded hills overlooking the wide sweep of Tor Bay – its air of sophisticated yet friendly spaciousness, its luxurious hotels and stuccoed villas, the vivid colours of its subtropical trees and flowers make it the nearest thing to a French Riviera resort in Britain. It was created largely in the

19th century, and some parts of the town still preserve a distinctly Victorian character. Torquay's attractions include theatres, a museum, art gallery, good beaches, such as Babbacombe to the north, cliff walks, parks and yachting. Cockington village is a well-known local showplace and just east of Cockington are the ruins of 12th-century Torre Abbey and the nearby Chapel of St. Michael. On the edge of the town, about 1 mile east of the harbour, is the famous Kent's Cavern, one of the oldest known human dwelling-places in Britain.

Bute Court Hotel The hotel is situated in its own sheltered grounds in the heart of Torquay's Belgravia, only a few minutes walk from the sea. There is private access to the adjoining Abbey Gardens. Facilities include a ballroom, games room and sun deck with heated swimming pool. All bedrooms have colour television.

Sat 28 May

0735 Raynes Park
0740 Wimbledon
0745 South Wimbledon
0750 Morden
0755 Rose Hill
0805 Sutton
0815 Cheam Village
0820 Ewell
0825 West Ewell
0830 Epsom
0840 Ashted
0845 Leatherhead
0850 Great Bookham*

Sat 27 August

0735 Epsom
0745 Drift Bridge
0750 Banstead
0800 Wallington
0805 Carshalton
0815 Sutton
0825 North Cheam
0830 Worcester Park
0835 New Malden
0840 Tolworth
0845 Surbiton
0850 Kingston

*opposite Beckley Parade only

Sidmouth

4 days £108.00

single room £117.50
supplement per person for room with private facilities £9.50

Prices include:

- Travel in coach with reclining seats.
- Full board at the Fortfield Hotel, Sidmouth from dinner on the day of arrival to lunch on the day of departure (AA 3-star, Egon Ronay recommended, lift, telephone 039 55 2403).
- Comprehensive holiday insurance (see page 30).

First day Stopping for coffee in Winchester, we continue via Romsey, the New Forest, Ringwood and Wimborne Minster to Dorchester for lunch. Dorchester was an important town in Roman times and has many links with Thomas Hardy and Judge Jeffreys. In the afternoon, we go via Bridport to Lyme Regis which has pretty colour-wash cottages and wonderful cliff scenery. We arrive late afternoon in Sidmouth and check in at the Fortfield Hotel which is in its own extensive grounds overlooking the sea and cricket ground. It is a warm, comfortable and friendly hotel offering the best of traditional English hospitality and food. Though old, the Fortfield has been progressively modernised without spoiling its original beauty. All bedrooms have tea/coffee making facilities and an indoor heated swimming pool is planned for 1983. Buffet luncheons are included on this tour.

Second day The morning is free in Sidmouth, a quiet resort on the South Devon coast,



Fortfield Hotel, Sidmouth

Sidmouth is flanked by red and white cliffs and sheltered between two tree-covered hills giving a mild climate all the year round. The resort preserves the natural beauty of the local countryside and has a fine shopping centre. After lunch, you can go to Exeter or Castle Drogo. Exeter has many historic buildings including Tudor and Stuart houses and Georgian crescents. The cathedral in Exeter, with its twin Norman towers, is one of the finest examples of the Decorated period of Gothic architecture. Castle Drogo is near Chagford and was built by Sir Edwin Lutyens between 1910 and 1930. It is perhaps the last

private house to be erected on this scale in Britain. Perched on a granite outcrop above the dramatic gorge of the River Teign, the Castle has wonderful views over the east side of Dartmoor. There is a terraced garden and miles of splendid walks. Admission is extra to Castle Drogo (National Trust).

Third day The morning is at leisure. Later, we visit Buckfast Abbey which was built by Benedictine monks and completed in 1938. At a nearby shop, the monks sell their tonic wine and honey. We stop for tea in Torquay which is majestically situated on Tor Bay, flanked by cliffs and sheltered by wooded hills. There is a picturesque harbour, a splendid sea front and colourful gardens with many palm trees and other subtropical plants.

Fourth day The morning is free for a last look at Sidmouth. After lunch, we return via Chard, Yeovil and Shaftesbury, stopping for refreshments. Home approximately 2030.

Fri 1 April

0735 Epsom
0745 Drift Bridge
0750 Banstead
0800 Wallington
0805 Carshalton
0815 Sutton
0825 North Cheam
0830 Worcester Park
0835 New Malden
0840 Tolworth
0845 Surbiton
0850 Kingston

Tues 9 August Tues 11 October

0735 Raynes Park
0740 Wimbledon
0745 South Wimbledon
0750 Morden
0755 Rose Hill
0805 Sutton
0815 Cheam Village
0820 Ewell
0825 West Ewell
0830 Epsom
0840 Ashted
0845 Leatherhead
0850 Great Bookham*

*opposite Beckley Parade only

North Devon

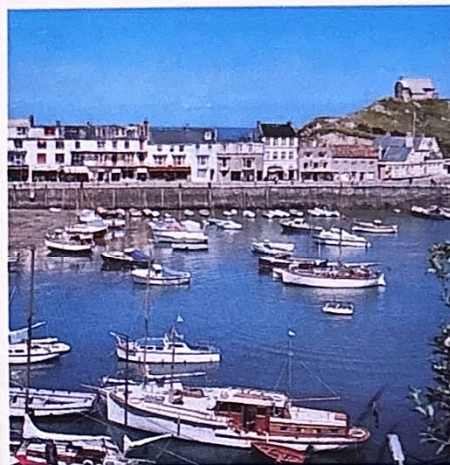
3 days £76.00

single room £81.00

Prices include:

- Travel in coach with reclining seats.
- 2 nights dinner, bed and breakfast at the Durrant House Hotel, near Bideford (AA 3-star, Ashley Courtenay and Egon Ronay recommended, all rooms with private bathroom, telephone 023 72 2361).
- Admission to Quince Honey Farm.
- Comprehensive holiday insurance (see page 30).

First day The coffee stop is in Stockbridge, a charming old town with a wide main street sloping down to a bridge over the River Test. We continue via Salisbury, Shaftesbury and Blackmoor Vale to Sherborne for lunch. Sherborne is a mellow stone-built town with an ancient Abbey Church, castle ruins, almshouses and famous school. The journey continues via Yeovil, Ilminster and Taunton in the shadow of the Quantock Hills to Williton and Dunster for tea. Dunster is one of the most beautiful villages on Exmoor, dominated by a tower and a castle. Next we drive along the North Devon coast via Minehead and Lynton to Barnstaple. Early evening, we arrive at the Durrant House Hotel near Bideford. Originally a Georgian gentleman's residence, the hotel has been fully modernised and tastefully extended. It is set in its own grounds between the fishing village of Appledore and nearby old seaport of Bideford. All bedrooms have colour television and tea/coffee making facilities. Public facilities include a swimming



Ilfracombe

pool, comfortable residents' lounge and entertainment in the Cedar Bar or luxuriously appointed Venetian Room.

Second day In the morning, we visit Clovelly, one of the show-places not only of Devon but of Britain. Clovelly lies in a lush, narrowcombe between steep cliffs. The cottages lining the steep main street are decked with flowers for most of the year. We stop for lunch in Bideford which used to be the principal port of North Devon. Bideford's most famous sight is the bridge over the River Torridge: it has 24

arches and incorporates part of an original 15th-century stone bridge. The tea stop is in Ilfracombe which is built around its old harbour and is the largest seaside resort in North Devon. There are many good shingle beaches, two of them reached by tunnels through the rocks.

Third day In the morning, we visit Quince Honey Farm in South Molton. Here you can trace the story of honey from flower to table and follow the different processes. In the shop, you can buy pure Devon honey in jars or comb, beeswax candles, furniture polish and cosmetics at wholesale prices. The lunch stop is in Taunton, the county town of Somerset in the Vale of Taunton Deane. Taunton has many interesting historic buildings including the Castle, Tudor House and Church of St. Mary Magdalen. We continue via Langport, Sparkford and Mere before stopping for tea and crossing the Salisbury Plain past Stonehenge. Home approximately 2000.

Tues 3 May

0705	Raynes Park
0710	Wimbleton
0715	South Wimbledon
0720	Morden
0725	Rose Hill
0735	Sutton
0745	Cheam Village
0750	Ewell
0755	West Ewell
0800	Epsom
0810	Ashted
0815	Leatherhead
0820	Great Bookham*

*opposite Beckley Parade only

Fri 1 July

0705	Epsom
0715	Drift Bridge
0720	Banstead
0730	Wallington
0735	Carshalton
0745	Sutton
0755	North Cheam
0800	Worcester Park
0805	New Malden
0810	Tolworth
0815	Surbiton
0820	Kingston

Bath

3 days £79.00

single room £84.00

Prices include:

- Travel in coach with reclining seats.
- 2 nights dinner, bed and breakfast at Pratt's Hotel, Bath (AA 3-star, Egon Ronay and Ashley Courtenay recommended, lift, all rooms with private bathroom telephone 0225 60441).
- Comprehensive holiday insurance (see page 30).

First day The coffee stop is in Windsor, an historic Thames-side town, which has been the chief residence of English monarchs, since it was founded by William the Conqueror nearly 900 years ago. We continue via Newbury and Hungerford to Marlborough for lunch. Marlborough is an ancient town on the River Kennet: its broad High Street with many charming old buildings, is one of the finest in the country. Later, we make a short stop in Avebury which is ringed by one of the most

important pre-historic monuments in Britain, the Avebury Stone Circle. We continue via Calne, Chippenham and Corsham, arriving late afternoon in Bath. Pratt's Hotel forms part of the historic South Parade, a peaceful cul-de-sac within the city. Rooms are well appointed and tastefully decorated with colour television and tea and coffee making facilities.

Second day The morning is at leisure in Bath, one of Britain's most historic cities. Set between the Cotswolds and the green hills of Somerset, the small city is uniquely beautiful. Bath has the only natural hot springs in Britain and you can visit the Roman Baths and Pump Room, Britain's most complete Roman remains. A popular spa in Georgian times, Bath also has many fine Georgian buildings, and in the Assembly Rooms, a Museum of Costume. After lunch, we go on a short tour via Radstock, Shepton Mallet and Glastonbury to Wells for tea. Wells is a charming old cathedral town at the foot of the Mendip Hills. The Cathedral is one of the finest in the country and the moated Bishop's Palace renowned for its bell-ringing swans.

Third day The morning is free in Bath. In the afternoon, we go through Warminster and along the Wylde Valley to Salisbury for tea. Salisbury has a beautiful 13th century cathedral, immortalised through the paintings of Constable. Home approximately 1900.

Fri 11 March

0835	Great Bookham
0840	Fetcham
0845	Leatherhead
0850	Ashted
0900	Epsom
0905	West Ewell
0910	Ewell
0920	North Cheam
0925	Worcester Park
0930	New Malden
0940	Kingston
0945	Hampton Wick
0955	Twickenham

Tues 25 October

0825	Epsom
0835	Drift Bridge
0840	Banstead
0850	Wallington
0855	Carshalton
0905	Sutton
0915	North-Cheam
0920	Worcester Park
0925	New Malden
0930	Tolworth
0935	Surbiton
0940	Kingston
0945	Hampton Wick
0955	Twickenham



Pulteney Bridge, Bath

Bournemouth

3 days £65.00 (June £70.00)

single room £70.00 (June £75.00)
 supplement per person for twin-bedded room
 with private bathroom £4.50

Prices include:

- Travel in coach with reclining seats.
- Full board from lunch on the first day to lunch on the day of departure at the Pinehurst Hotel, Bournemouth (AA 2-star, lift, twin rooms with shower only, telephone 0202 26218).
- Comprehensive holiday insurance (see page 30).

First day We drive across the Hog's Back and through pretty Hampshire villages, stopping for coffee before arriving in Bournemouth at lunchtime. The Pinehurst Hotel is situated within easy reach of the town centre, also close to the beautiful West Cliff and golden beaches. There are three lounges, a television room, a coffee bar, and an ordinary bar. All rooms have tea/coffee making facilities. After lunch the afternoon is free in Bournemouth.

Second day The morning is free to explore Bournemouth which has a mild climate and is one of Britain's leading coastal resorts. It is a delightful garden town built among pines on the rim of a wide bay. There are miles of clean sands, good bathing, two piers, three beach lifts, many beautiful parks and gardens, and an excellent shopping centre. After lunch we go via the Sandbanks chain ferry to the Isle of



Zig-zag path, Bournemouth

Purbeck. We drive through Swanage and past Corfe Castle before reaching Wareham and stopping in Poole for tea. Poole has one of the finest natural harbours in the world and is a centre for fishing and yachting. Much of the town seems little changed since the days of pirates and there are many interesting old houses and inns. You will have time to visit the shop of Poole Pottery. In the evening, there is plenty of entertainment – live shows throughout the year as well as theatres, cinemas, clubs and casinos.

Third day The morning is free for a last look at Bournemouth. We leave after lunch and return via Ringwood and Romsey, stopping in Winchester for tea. Winchester is set among the Hampshire Downs on the River Itchen and is one of Britain's most historic cities. Home approximately 1800.

Tues 12 April

0805 Epsom
 0815 Drift Bridge
 0820 Banstead
 0830 Wallington
 0835 Carshalton
 0845 Sutton
 0855 North Cheam
 0900 Worcester Park
 0905 New Malden
 0910 Tolworth
 0915 Surbiton
 0920 Kingston

Fr 24 June

Tues 1 November

0805 Raynes Park
 0810 Wimbledon
 0815 South Wimbledon
 0820 Morden
 0825 Rose Hill
 0835 Sutton
 0845 Cheam Village
 0850 Ewell
 0855 West Ewell
 0900 Epsom
 0910 Ashted
 0915 Leatherhead
 0920 Great Bookham*

*opposite Beckley Parade only

Autumn in the New Forest

3 days £73.00

single room £79.50

Prices include:

- Travel in coach with reclining seats.
- 2 nights dinner, bed and breakfast at the Crown Hotel, Lyndhurst (AA 3-star, Egon Ronay and Ashley Courtenay recommended, lift, all rooms with private bathroom, telephone 042 128 2722).
- Admission to Buckler's Hard.
- 1-hour ride on a Horse-Drawn Wagon through New Forest enclosures.
- Comprehensive holiday insurance (see page 30).

Tuesday The coffee stop is in Farnham, the most westerly town in Surrey and one of the least spoilt. We continue via the pleasant medieval wool town of New Alresford to Winchester for lunch. For centuries, Winchester was the capital of England and you can see the famous Cathedral which is the longest Gothic church in Europe and has many famous shrines. Mid afternoon, we arrive in Lyndhurst, the administrative centre of the New Forest, surrounded by attractive woodland scenery. The Crown Hotel is located in the town centre and built in the style of a wealthy gentry's hunting lodge. All bedrooms have colour television and tea/coffee making facilities.

Wednesday Planted over 1,000 years ago, the New Forest became a royal hunting preserve for William the Conqueror, whose treasury was at Winchester. Few forests in Britain have such a variety of trees and such rich colouring. Beeches, oaks and birches predominate, while in the cultivated gardens of those who live in the forest there are few British shrubs and plants that do not grow in abundance. In the vast woodlands, five varieties of deer run wild; there are also wild donkeys and some 2,000 ponies. In the morning, we drive to Brockenhurst for a 1-hour ride on a Horse-drawn Wagon through the enclosures where cars cannot go. This is an enjoyable and relaxing way of seeing the New Forest with the possibility of seeing some of the more elusive species of wild life such as foxes and badgers in their natural surroundings. The wagons are fitted with waterproof canopies and well sprung with padded seats for a comfortable ride. The lunch stop is in the ancient town of Lymington which has an interesting High



Autumn Colours

Street and tidal harbour usually full with yachts. Later we visit the tiny village of Buckler's Hard, on the lower reaches of the Beaulieu River, which through being near to the New Forest's plentiful supplies of oak, was once a shipbuilding centre. Late afternoon, we arrive back in Lyndhurst.

Thursday We go via the pleasant village of Burley to the busy market town of Ringwood for coffee. Before leaving the New Forest, we pass through the village of Breamore, which is almost pure Tudor and triangular in shape. The lunch stop is in Salisbury, built at the meeting point of four river valleys and one of the most beautiful cathedral cities in Britain. Immortalised through the paintings of Constable, Salisbury Cathedral has the tallest spire in England. The tea stop is at Guildford

Cathedral which is built in the shape of a cross with rose-coloured bricks made from the clay of the hill on which it stands. Home approximately 1800.

Tues 4 October

0805 Raynes Park
 0810 Wimbledon
 0815 South Wimbledon
 0820 Morden
 0825 Rose Hill
 0835 Sutton
 0845 Cheam Village
 0850 Ewell
 0855 West Ewell
 0900 Epsom
 0910 Ashted
 0915 Leatherhead
 0920 Great Bookham*

Tues 18 October

0805 Epsom
 0815 Drift Bridge
 0820 Banstead
 0830 Wallington
 0835 Carshalton
 0845 Sutton
 0855 North Cheam
 0900 Worcester Park
 0905 New Malden
 0910 Tolworth
 0915 Surbiton
 0920 Kingston

*opposite Beckley Parade only

Isle of Wight

5 days £148.00

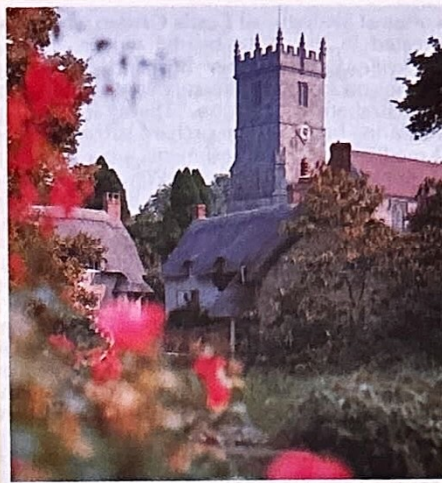
single room £155.00

Prices include:

- Travel in coach with reclining seats.
- Return crossing to Cowes by Red Funnel steamer.
- 4 nights dinner, bed and breakfast at the Royal Hotel, Ventnor (AA 3-star, Egon Ronay recommended, lift, all rooms with private bathroom, telephone 0983 852186).
- Comprehensive holiday insurance (see page 30).

Monday We drive to Southampton where our coach boards the Red Funnel steamer via Southampton Water and the Solent to Cowes. Crossing the island from north to south, we arrive in Ventnor and check in at the Royal Hotel. Situated in attractive sheltered gardens, the hotel stands 150 feet above sea level and just a few minutes walk from the town and seafront. The Royal is Ventnor's largest hotel and offers a friendly atmosphere and excellent facilities, including a heated outdoor swimming pool. All bedrooms have colour television and tea/coffee making facilities.

Tuesday to Thursday During our stay, we will be visiting the following: *Alum Bay* Famous for its multi-coloured sands. One mile out to sea stand the Needles, a noted chalk landmark with a lighthouse. *Carisbrooke* Old capital of the island, with a mighty 12th-century Norman castle, built on the site of a Roman fort. Fine views from the ramparts. A deep well in the castle has a water-wheel once worked by



Godshill

prisoners and today by donkeys. Admission extra. *Godshill* Village on a steep hill, with a cluster of thatched cottages nestling in the shadow of a church, well worth visiting for its paintings and effigies. Many pleasant tea-gardens. *Newport* Capital of the island, at the head of the River Medina. The town has an excavated Roman villa, some attractive 17th-century houses, and a guildhall designed by the 19th-century architect John Nash.

Osborne House Queen Victoria's home at the time of her death in 1901. Prince Albert and Thomas Cubitt designed the house as an Italian villa. You can see the state and private apartments, furnished as they were in Queen Victoria's time. In the *Swiss Cottage*, a play house built for the Royal children, are the Queen's writing table and her personal collection of porcelain. *Ryde* ½ mile long pier with an electric railway. *Shanklin* Sheltered sands and a pier snuggle below the town centre, set on cliffs with a lift down to the beach. The *Old Village* has one of the prettiest inns on the island, *The Crab*. *Yarmouth* The most continental of the island's resorts, small, clean, and bustling with yachts.

Friday The morning is at leisure. After lunch, we return to Cowes and board the ferry back to Southampton. A refreshment stop will be made on the return journey. Home approximately 1930.

Mon 23 May

0805 Epsom
0815 Drift Bridge
0820 Banstead
0830 Wallington
0835 Carshalton
0845 Sutton
0855 North Cheam
0900 Worcester Park
0905 New Malden
0910 Tolworth
0915 Surbiton
0920 Kingston

Mon 26 September

0805 Raynes Park
0810 Wimbledon
0815 South Wimbledon
0820 Morden
0825 Rose Hill
0835 Sutton
0845 Cheam Village
0850 Ewell
0855 West Ewell
0900 Epsom
0910 Ashted
0915 Leatherhead
0920 Great Bookham*
*opposite Beckley Parade only

Luxury Weekend*****

2 days £62.00

single room £66.00

Prices include:

- Travel in coach with reclining seats.
- Dinner, bed and breakfast at the Grand Hotel, Eastbourne (AA 5-star, Egon Ronay recommended, lift, all rooms with private bathroom, telephone 0323 22611).
- Full afternoon tea on Sunday in the Grand Hotel.
- Comprehensive holiday insurance (see page 30).

Saturday We drive along pleasant country lanes via Turner's Hill, Ardingly and Lindfield to Lewes where we stop for lunch. The county town of East Sussex has the remains of a Norman castle, a jumble of medieval streets and a variety of buildings in local materials, most of them Georgian. After lunch, we continue across the South Downs to Beachy Head, one of the highest cliffs on the south

coast, with a lighthouse at its foot. Mid afternoon, we arrive in Eastbourne and check in at the Grand Hotel which occupies the premier position on the sea front and is one of the few hotels in Great Britain to hold the coveted Five Star rating. From the privacy of its own gardens, the hotel looks out over the lawns and promenade to the sea and cliffs of Beachy Head. The architectural splendour of the hotel is complemented by its setting which continues inside with the elegant decor and spaciousness of both public and private rooms. Service is to the usual high standard associated with a Five Star hotel but the international reputation has been built on the personal attention given by the staff and the excellent choice and quality of the cuisine. All bedrooms have colour television and early morning tea and a newspaper are included.

Sunday After breakfast, you will have a little time to explore Eastbourne where the elegance intended by the 7th Duke of Devonshire when he designed the town in

1834 still survives. Later, you can go on an optional excursion along the coast via Pevensey Bay, Bexhill and Hastings to Rye for lunch. One of the ancient Cinque Ports which has receded inland, Rye is fascinating and full of character, with tiled and timbered houses and narrow cobbled streets. From the top of the hill, are fine views of the Romney Marsh. Later, full afternoon tea will be served in the Grand Hotel before leaving for the homeward journey. Home approximately 1900.

Sat 5 March

0935 Epsom
0945 Chessington North
0950 Hook
1000 Surbiton
1005 Kingston
1015 Raynes Park
1025 Morden
1030 Rose Hill
1040 Sutton
1050 Banstead

Sat 26 November

0945 Great Bookham
0950 Fetcham
0955 Leatherhead
1000 Ashted
1010 Epsom
1015 West Ewell
1020 Ewell
1025 Cheam Village
1035 Sutton
1045 Carshalton
1050 Wallington
1100 Coulsdon



Grand Hotel, Eastbourne

Springtime in Kent

2 days £52.00

single room £56.00

Prices include:

- Travel in coach with reclining seats.
- Dinner, bed and breakfast at the Hotel Imperial, Hythe (AA 4-star, Egon Ronay recommended, lift, all rooms with private bathroom, telephone 0303 67441).
- Admission to Sissinghurst Castle Garden.
- Admission to Boughton Monchelsea Place (including afternoon tea).
- Comprehensive holiday insurance (see page 30).

Saturday We visit the 'Garden of England' in Springtime when the trees are in blossom and there is a mass of colour. The morning is spent meandering through pretty country villages and along narrow winding lanes past hop fields, oast houses and orchards. We stop for

coffee at Sissinghurst Castle Garden which was created in the 1930s by the writers Victoria Sackville-West and her husband Sir Harold Nicholson between the surviving buildings of an Elizabethan mansion. There are spring-flowering bulbs and an orchard surrounded by a medieval moat. Refreshments are available in a converted oast house. We continue via Biddenden to Tenterden for lunch. On the edge of the Weald, the attractive town was important as a wool-trading centre in medieval times. Later, we visit the tulip fields at Appledore where you can order bulbs for the following year. Meeting the coast at St. Mary's Bay, we continue via Dymchurch to Hythe, checking in at the Hotel Imperial which many people consider to be one of the premier hotels in south-east England. To the south, east and west are uninterrupted views over the Channel, while the north aspect is of sheltering hills. Amenities include a leisure complex and the grounds embrace ornamental

and kitchen gardens. All bedrooms have colour television and tea/coffee making facilities.

Sunday Most of the morning is free in Hythe, a charming little town which reached its moment of importance as a Cinque Port and has been content to rest and live well. There are attractive winding lanes and old houses perched on the hillside. Through the town runs the Royal Military Canal, built to guard against Napoleon's expected invasion in the 19th century. Next we drive via the picturesque Elham Valley to Canterbury for lunch. One of Britain's finest cathedral cities, Canterbury stands on the River Stour in the heart of the Kent countryside. Pilgrims used to walk to Canterbury Cathedral to see the shrine of Thomas Becket who was murdered in the Cathedral in 1170. There are ancient city walls and gateways, the riverside home of the Huguenot Weavers and many other interesting places. We continue via Chilham and Charing to Boughton Monchelsea Place, a battlemented Elizabethan manor of Kentish ragstone, built in 1567, with interesting Regency alterations. It is dramatically situated with a breathtaking view over its own landscaped park, in which fallow deer have roamed for at least 300 years, and beyond to the whole Weald of Kent. Its beautiful interior is still that of an intimate and inhabited 'home' to which successive generations have added new treasures. There are also displays of dresses, carriages, old vehicles and farm implements. Afternoon tea is included - tea, scones and jam and home-made cakes. Home approximately 1900.



Kent Blossom

Sat 30 April

0715 Great Bookham
0720 Fetcham
0725 Leatherhead
0730 Ashtead
0740 Epsom
0745 West Ewell
0750 Ewell
0755 Cheam Village
0805 Sutton
0815 Carshalton
0820 Wallington
0830 Coulsdon

Sat 7 May

0705 Epsom
0715 Cheshington North
0720 Hook
0730 Surbiton
0735 Kingston
0745 Raynes Park
0755 Morden
0800 Rose Hill
0810 Sutton
0820 Banstead

Cotswolds

3 days £72.00

single room £77.00

Prices include:

- Travel in coach with reclining seats.
- 2 nights dinner, bed and breakfast at the Carlton Hotel, Cheltenham Spa (AA 3-star, Egon Ronay and Ashley Courtenay recommended, lift, all rooms with private bathroom, telephone 0242 514453).
- Admission to Sudeley Castle.
- Comprehensive holiday insurance (see page 30).

First day The coffee stop is in Henley-on-Thames, a pleasant riverside resort famous for its regatta. Crossing the Chiltern Hills, we arrive in Burford for lunch and a little sightseeing. The charming old town built of Cotswold stone, has a picturesque High Street and lovely bridge spanning the River Windrush. Leaving Burford, we drive to Cheltenham and arrive mid afternoon at the Carlton Hotel. Commanding a first-class position in the heart of the town, the hotel is in a quiet, tree-lined road amidst Regency architecture. All bedrooms have colour television and tea/coffee making facilities.

Second day After a late start, we drive via Cleve Hill and the ancient town of Winchcombe to Sudeley Castle for lunch and sightseeing. The beautiful 12th-century Cotswold home of Queen Katherine Parr, is rich in Tudor history. Art treasures include Constable, Rubens and Van Dyck. There are beautiful gardens with the historic Elizabethan garden as main highlight. Other attractions include

exhibitions and a unique Toy and Doll collection. Later, we stop for tea in Broadway, where the beauty of the mellow, honey-coloured old stone buildings has lured visitors since the last century when the village was known as 'The Painted Lady of the Cotswolds'. We return via Stow-on-the-Wold, a hilltop town and once a bustling centre of the wool industry.

Third day After another late start, we drive to Bourton-on-the-Water for lunch and sightseeing. Bourton is a lovely old Cotswold village on the River Windrush with many stone houses, miniature bridges and riverside greens. The journey continues via Chipping Norton to Woodstock, a beautiful town with

many elegant 18th century buildings, where we stop for tea. Home approximately 1900.

**Tues 26 April
Sat 27 August**

0755 Great Bookham
0800 Fetcham
0805 Leatherhead
0810 Ashtead
0820 Epsom
0825 West Ewell
0830 Ewell
0840 North Cheam
0845 Worcester Park
0850 New Malden
0900 Kingston
0905 Hampton Wick
0915 Twickenham

**Tues 28 June
Fri 21 October**

0745 Epsom
0755 Drift Bridge
0800 Banstead
0810 Wallington
0815 Carshalton
0825 Sutton
0835 North Cheam
0840 Worcester Park
0845 New Malden
0850 Tolworth
0855 Surbiton
0900 Kingston
0905 Hampton Wick
0915 Twickenham



Sudeley Castle

Heart of England

3 days £77.00

single room £82.00

Prices include:

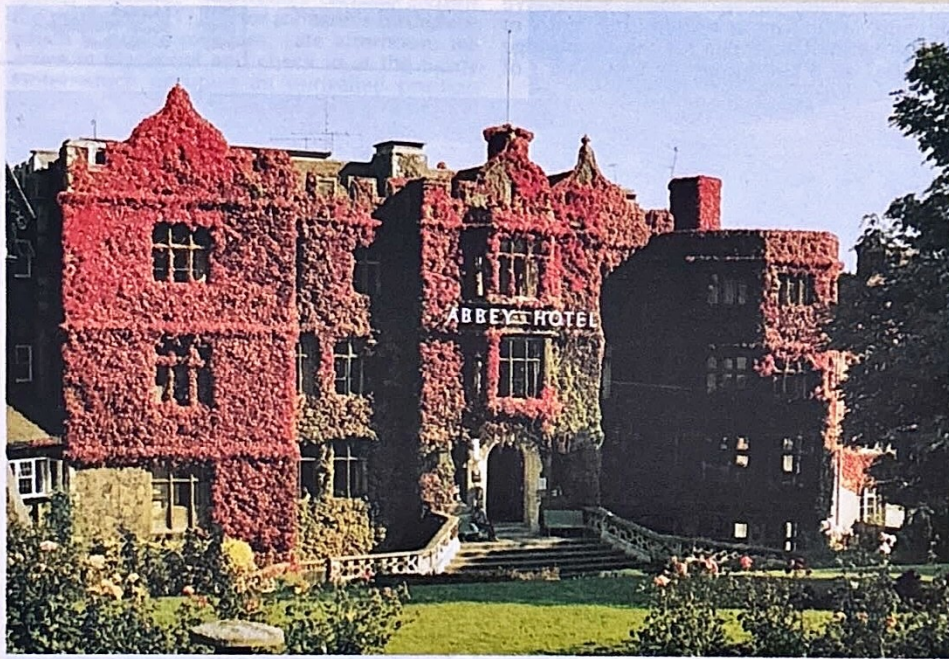
- Travel in coach with reclining seats.
- 2 nights dinner, bed and breakfast at the Abbey Hotel, Great Malvern (AA 3-star, Egon Ronay recommended, lift, all rooms with private bathroom, telephone 068 45 3325).
- Cream tea at the Beaufort Arms Hotel, Monmouth.
- Comprehensive holiday insurance (see page 30).

First day After a coffee stop in the pleasant riverside resort of Henley-on-Thames, we go via Woodstock and Chipping Norton into the Cotswolds through Moreton-in-Marsh to Broadway for lunch. The beauty of the mellow, honey-coloured stone buildings has lured visitors to Broadway since the last century. We continue via the Vale of Evesham and Pershore to Great Malvern, arriving late afternoon at the Abbey Hotel. The hotel is ivy-clad and adjoins

the old Priory. On one side are the lovely hotel gardens and on the other the Malvern Hills. All bedrooms have colour television and tea/coffee making facilities.

Second day The morning is free in Great Malvern, one of Britain's loveliest inland resorts. Sheltered by hills from the west wind, the town is full of historic interest. In the afternoon, we go via Tewkesbury, the Vale of Gloucester, Westbury-on-Severn and Lydney to Chepstow. Next we follow the Wye Valley past the ruins of Tintern Abbey to Monmouth for tea. Monmouth has Tudor and Georgian buildings and a network of old streets. A cream tea will be served in the Beaufort Arms, an early 18th century coaching inn with a Georgian facade adjoining the old Shire Hall. We return via Ross-on-Wye, Ledbury and the Malvern Hills which provide magnificent views westwards towards Wales and eastwards across patchwork scenery to Warwickshire.

Third day After a late start, we leave Great Malvern and stop for coffee in Worcester where you will have a little time to see the Cathedral overlooking the River Severn. The lunch stop is in Stratford-upon-Avon where you will have a little time for sightseeing. Stratford is a lovely old town rich in half-timbered houses and memories of Shakespeare. The tea stop is in Woodstock, a small country town and birthplace of the Black Prince. Home approximately 1930.



Abbey Hotel, Great Malvern

Tues 31 May

Fri 23 September

0755	Great Bookham
0800	Fetcham
0805	Leatherhead
0810	Ashtead
0820	Epsom
0825	West Ewell
0830	Ewell
0840	North Cheam
0845	Worcester Park
0850	New Malden
0900	Kingston
0905	Hampton Wick
0915	Twickenham

Fri 22 July

0745	Epsom
0755	Drift Bridge
0800	Banstead
0810	Wallington
0815	Carshalton
0825	Sutton
0835	North Cheam
0840	Worcester Park
0845	New Malden
0850	Tolworth
0855	Surbiton
0900	Kingston
0905	Hampton Wick
0915	Twickenham

Ludlow Weekend

3 days £89.00

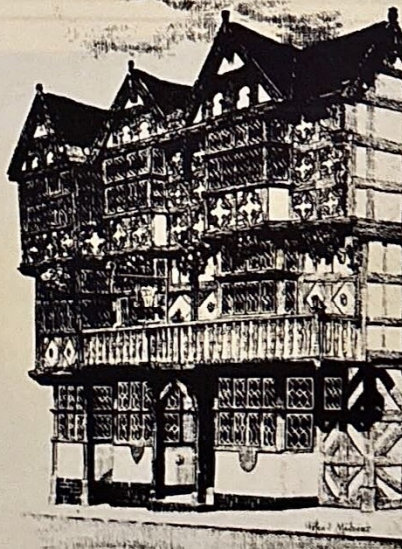
single room £95.50

Prices include:

- Travel in coach with reclining seats.
- 2 nights dinner, bed and breakfast at the Feathers Hotel, Ludlow (AA 3-star, Egon Ronay and Ashley Courtenay recommended, all rooms with private bathroom, telephone 0584 2919).
- Cream tea at Stretton Hall Hotel, near Church Stretton.
- Comprehensive holiday insurance (see page 30).

Friday We stop for coffee in the pleasant riverside resort of Henley-on-Thames. The journey continues via the Berkshire Downs and Vale of White Horse to Cirencester for lunch. In Roman times, after London, Cirencester was the largest town in Britain. Cirencester was the greatest wool market in England in the 15th century. We continue via Ledbury and Leominster to Ludlow where we stop the next two nights at the Feathers Hotel, one of the world's most famous hotels, probably built in 1521. It has a delightfully ornate facade of carved beams, gables, half-timbering and latticed windows. Interior features include two olde-world bars, a narrow wooden staircase and a lounge with splendid moulded ceiling and carved oak mantelpiece. All bedrooms have colour television and tea/coffee making facilities.

Saturday You will have the morning free to explore Ludlow, an ancient town with many fine timbered and Georgian buildings, a



Feathers Hotel, Ludlow

medieval gateway, a butter cross and alleyways with small antique shops. The Castle which overlooks the river, was built in the 11th century to repel Welsh raiders. You can buy local produce in the Saturday market and have

coffee in De Veres, an interesting old tea room in Broad Street. In the afternoon, there is a short excursion to see The Long Mynd, a 10-mile long ridge of bleak hills between 2 and 4 miles wide, which commands magnificent views. A cream tea will be served in Stretton Hall Hotel, an early 19th-century mansion set in 18 acres of grounds in a valley near the Welsh border. The hotel is in All Stretton, in the heart of the superbly beautiful country romanticised by Mary Webb in her novels and brought vividly to the public in the film 'Gone to Earth'.

Sunday After a late start, we go via Bromyard, Worcester and Alcester to Stratford-upon-Avon for lunch. Stratford is a lovely old riverside town rich in half-timbered buildings and memories of Shakespeare. We stop for tea in Woodstock, a beautiful town with many elegant 18th-century buildings. The last part of the journey goes across the Chiltern Hills and along the Thames Valley. Home approximately 1900.

Fri 25 March

0755	Great Bookham
0800	Fetcham
0805	Leatherhead
0810	Ashtead
0820	Epsom
0825	West Ewell
0830	Ewell
0840	North Cheam
0845	Worcester Park
0850	New Malden
0900	Kingston
0905	Hampton Wick
0915	Twickenham

Fri 18 November

0745	Epsom
0755	Drift Bridge
0800	Banstead
0810	Wallington
0815	Carshalton
0825	Sutton
0835	North Cheam
0840	Worcester Park
0845	New Malden
0850	Tolworth
0855	Surbiton
0900	Kingston
0905	Hampton Wick
0915	Twickenham

3 days £75.00

single room £80.00

Prices include:

- Travel in coach with reclining seats.
- 2 nights dinner, bed and breakfast at the Hotel Nelson, Norwich (AA 3-star, Egon Ronay and Ashley Courtenay recommended, lift, all rooms with private bathroom, telephone 0603 28612).
- Cruise from the hotel to Surlingham Broad and return.
- Comprehensive holiday insurance (see page 30).

First day Stopping for coffee, we arrive for lunch in Dedham, a delightfully compact village set amongst the water meadows of the River Stour. Dedham High Street has fine upper storeys and roof-lines above the shop fronts, two spacious inns and a fine Elizabethan school. The tower of the 16th century church is in many of Constable's paintings. Later, we drive through Snape past 'The Maltings' where the Aldeburgh Festival is held on the site of a malt store. We stop for tea in Aldeburgh, an ancient East Anglian coastal town which grew up after the prosperous medieval fishing and ship-building centre of Slaughden was destroyed by the sea. The town has many associations with Benjamin Britten whose opera 'Peter Grimes' is set in Slaughden. We continue via the mellow old town of Beccles to Norwich, arriving early evening at the Hotel Nelson. The modern hotel overlooks the River Wensum and is within comfortable walking distance of the city's main shopping centre. Most of the bedrooms overlook the river or the attractive central courtyard. Each room has colour television and tea/coffee making facilities.

Second day You will have the morning free in Norfolk's splendid capital, a venerable city with a beautiful Norman cathedral and 32 medieval churches. The fascinating city is full of quaint byways and old gabled houses with crooked timbers and colour-washed plasterwork. Norwich was once the centre of the weaving industry and the 'second city' of England. After lunch, a boat will leave the water-steps of the Hotel Nelson for Norfolk Broads. Cruising down the River Wensum through the City of Norwich, we join the River Yare and go through the beautiful Yare Valley passing Whitlingham, Thorpe St. Andrew, Postwick, Bramerton and Surlingham Ferry.

Reaching Surlingham Broad, the boat turns at Coldham Hall and we return to Norwich via Brundall. A live commentary is given about the wildlife and history of the City, the rivers and the Broads. You are also told about the ghosts which haunt the Broads at night. Light refreshments are available on the boat.

Third day After a late start, we drive to Bury St. Edmunds for lunch. Bury is an historic cathedral town with many ancient buildings including the ruins of an abbey founded in 1020 by King Canute around the shrine of the martyred Edmund, last King of the East Angles. Here in 1214 the barons swore that they would force King John to seal Magna Carta. We continue via the famous horse-racing centre of Newmarket to Cambridge for tea. Cambridge is famous as a University city and centre of

scientific research. You will have a little time to see some of the colleges and walk beside the River Cam which is spanned by many fine bridges. Home approximately 2030.

Fri 3 June

0820 Epsom
0830 Chessington North
0835 Hook
0845 Surbiton
0850 Kingston
0900 Raynes Park
0910 Morden
0915 Rose Hill
0925 Sutton
0935 Banstead

Tues 2 August

0835 Great Bookham
0840 Fetcham
0845 Leatherhead
0850 Ashted
0900 Epsom
0905 West Ewell
0910 Ewell
0915 Cheam Village
0925 Sutton
0930 Rose Hill
0935 Morden
0940 South Wimbledon
0945 Wimbledon



Norwich Cathedral

Derbyshire Peaks and Dales

3 days £81.00

single room £86.00

Prices include:

- Travel in coach with reclining seats.
- 2 nights dinner, bed and breakfast at the Lee Wood Hotel, Buxton (AA 3-star, Ashley Courtenay recommended, lift, all rooms with private facilities, telephone 0298 3002).
- Comprehensive holiday insurance (see page 30).

First day Stopping for coffee, we arrive for lunch in Ashbourne, one of the most attractive towns in Derbyshire and often called 'the gateway to the Peak'. Later, we visit Dovedale where the River Dove flows swiftly through a richly wooded limestone gorge. We also see Tissington, 'the loveliest village in Derbyshire', before driving direct to Buxton and arriving late afternoon at the Lee Wood Hotel. The hotel, which faces due South, is pleasantly situated in its own grounds within a few minutes walk of the Town Centre and places of entertainment. It commands an uninterrupted view of the surrounding countryside and forms a convenient centre. All bedrooms have tea/coffee making facilities.

Second day The morning is free in Buxton which became famous as a spa and is one of the highest towns in England. Buxton's town centre has the elegance and distinction of Georgian and Victorian times. It has many majestic buildings and some beautiful



Dovedale

gardens. In the afternoon, we go on a tour of the Peak District via the picturesque town of Chapel-en-le-Frith to Glossop before passing Snake Inn and Ladybower Reservoir. To increase the size of Ladybower Reservoir, the little village of Derwent was flooded.

Third day After a late start, we go to Bakewell for sightseeing and lunch. Bakewell is a valley town on the Wye, surrounded by richly wooded hills stretching to high moorland. The town is famous for its tarts which originated when a customer at the Rutland Arms Hotel ordered a strawberry tart and the cook mistakenly spread egg mixture on top of the jam instead of using it in the pastry. Leaving Bakewell, we follow the River Derwent among woodland and hills, with dramatic views of peaks and crags. Refreshment stops will be made on the homeward journey. Home approximately 1900.

Sat 28 May

0720 Great Bookham
0725 Fetcham
0730 Leatherhead
0735 Ashted
0745 Epsom
0750 West Ewell
0755 Ewell
0800 Cheam Village
0810 Sutton
0815 Rose Hill
0820 Morden
0825 South Wimbledon
0830 Wimbledon

Tues 30 August

0715 Epsom
0725 Drift Bridge
0730 Banstead
0740 Wallington
0745 Carshalton
0755 Sutton
0805 North Cheam
0810 Worcester Park
0815 New Malden
0820 Tolworth
0825 Surbiton
0830 Kingston
0835 Hampton Wick
0845 Twickenham

Blackpool Illuminations and Lake District

3 days £81.00

single room £86.00

Prices include:

- Travel in coach with reclining seats.
- 2 nights dinner, bed and breakfast at the Savoy Hotel, Blackpool (AA 3-star, Egon Ronay recommended, lift, all rooms with private facilities, telephone 0253 52561).
- Comprehensive holiday insurance (see page 30).

Friday Stopping for coffee, we arrive in Lichfield for lunch. The city is dominated by the Cathedral's three graceful sandstone spires, known as 'The Ladies of the Vale'. In the marketplace is Doctor Johnson's birthplace which is now a museum. Late afternoon, we arrive in Blackpool and check in at the Savoy Hotel which occupies an unrivalled position on the Queens Promenade overlooking the cliff gardens and sea, and within only one mile of the town centre. All rooms have colour television and tea/coffee making facilities. The hotel is under new ownership and management and all the main public areas and bedrooms are being modernised and completely refurbished. You will have plenty of time to view the illuminations on Friday and Saturday. The spectacular autumn lights stretch along the Promenade and are dominated by Blackpool Tower. Opposite the



Blackpool Illuminations

hotel, you can get on a tram to the town centre.

Saturday We go on a short day excursion to the Lake District. Travelling out via Windermere, Rydal Water and Thirlmere, we return via Ullswater and the lofty Kirkstone Pass. Refreshment stops will be made and we will return to Blackpool late afternoon.

Sunday Stopping for coffee, we arrive in Henley-in-Arden for lunch. The small town has a long main street lined with oak timbered buildings. Later, we go via Stratford-upon-Avon into the Cotswolds, stopping in Bourton-on-the-Water for tea. Bourton is a lovely old village on the River Windrush with many stone houses, miniature bridges and riverside greens. Home approximately 1930.

Fri 16 September

Fri 14 October

0805	Great Bookham
0810	Fetcham
0815	Leatherhead
0820	Ashted
0830	Epsom
0835	West Ewell
0840	Ewell
0845	Cheam Village
0855	Sutton
0900	Rose Hill
0905	Morden
0910	South Wimbledon
0915	Wimbledon

Fri 30 September

0800	Epsom
0810	Drift Bridge
0815	Banstead
0825	Wallington
0830	Carshalton
0840	Sutton
0850	North Cheam
0855	Worcester Park
0900	New Malden
0905	Tolworth
0910	Surbiton
0915	Kingston
0920	Hampton Wick
0930	Twickenham

Blackpool Illuminations

2 days £56.00

single room £64.00

Prices include:

- Travel in coach with reclining seats.
- Dinner, bed and breakfast at the Preston Crest Hotel (AA 3-star, Egon Ronay recommended, lift, all rooms with private bathroom, telephone 0772 59411).
- Comprehensive holiday insurance (see page 30).

Saturday Stopping for coffee, we arrive in Coventry for lunch. Coventry has many fine buildings including a splendid shopping centre and magnificent new cathedral. You can see the statue of Lady Godiva, who is reputed to have ridden naked through the city in the 11th century.

We arrive late afternoon at the Crest Hotel which is in the centre of Preston. All rooms have colour television and tea/coffee making facilities. You will have time to check into your room and get ready for an early dinner. After dinner, we drive to Blackpool to see the 'Greatest free show on earth'. Coloured garlands of fairy lights and rainbow fountains stretch six miles along the Promenade and giant tableaux bring old legends back to life. There are three piers, the Tower and a pleasure beach with side shows.

Sunday After a late start, we leave Preston and go via Knutsford to the Derbyshire Peaks stopping in Buxton for lunch. The town is 1000 feet above sea level and became famous as a health spa. We return via Bakewell and

Matlock, stopping for refreshments. Home approximately 2000.

Sat 24 September

Sat 22 October

0835	Great Bookham
0840	Fetcham
0845	Leatherhead
0850	Ashted
0900	Epsom
0905	West Ewell
0910	Ewell
0915	Cheam Village
0925	Sutton
0930	Rose Hill
0935	Morden
0940	South Wimbledon
0945	Wimbledon

Sat 8 October

0830	Epsom
0840	Drift Bridge
0845	Banstead
0855	Wallington
0900	Carshalton
0910	Sutton
0920	North Cheam
0925	Worcester Park
0930	New Malden
0935	Tolworth
0940	Surbiton
0945	Kingston
0950	Hampton Wick
1000	Twickenham

Chester

3 days £86.00

single room £97.50

Prices include:

- Travel in coach with reclining seats.
- 2 nights dinner, bed and breakfast at the Blossoms Hotel, Chester (AA 3-star, Egon Ronay recommended, lift, all rooms with private bathroom, telephone 0244 23186).
- Afternoon tea in Ruthin Castle Hotel.
- Visit to a Cheshire cheese farm (including coffee or tea and scones).
- Comprehensive holiday insurance (see page 30).

First day We stop for coffee in Henley-on-Thames before continuing via Woodstock and the Cotswolds to Evesham for lunch. The town is on the River Avon and centre of the fruit-growing industry of the Vale of Evesham. After lunch, we go via Worcester, Kidderminster and Bridgnorth to Shrewsbury for tea. Shrewsbury is beautifully situated on the River Severn and everywhere there are superb half-timbered buildings, little changed since the days of Elizabeth I. Early evening, we arrive in Chester at the Blossoms Hotel in the heart of the city. Once the terminus of London to Chester stagecoaches, the hotel has been extensively modernised. All bedrooms have colour television and tea/coffee making facilities.

Second day In the morning you can explore Chester. The former Roman city has ancient



Chester

walls and there have been excavations on an amphitheatre. There are streets full of black-and-white half-timbered houses, old taverns, arcaded shops known as the 'Rows' and a beautiful Cathedral which was once a Benedictine Abbey. In the afternoon, we cross into Wales through Llangollen which is surrounded by meadows, woods and mountains. The tea stop is at Ruthin Castle Hotel, a castellated 19th-century mansion standing in rolling parkland amid the ruins of a medieval castle.

Third day In the morning we visit Mollington Grange to see a Cheshire cheese farm (coffee/tea and scones are included). We return to Chester for lunch before making the

homeward journey. Refreshment stops will be made en route. Home approximately 2000.

Tues 17 May

0725	Great Bookham
0730	Fetcham
0735	Leatherhead
0740	Ashted
0750	Epsom
0755	West Ewell
0800	Ewell
0810	North Cheam
0815	Worcester Park
0820	New Malden
0830	Kingston
0835	Hampton Wick
0845	Twickenham

Fri 11 November

0715	Epsom
0725	Drift Bridge
0730	Banstead
0740	Wallington
0745	Carshalton
0755	Sutton
0805	North Cheam
0810	Worcester Park
0815	New Malden
0820	Tolworth
0825	Surbiton
0830	Kingston
0835	Hampton Wick
0845	Twickenham

4 days £114.00

single room £131.00

Prices include:

- Travel in coach with reclining seats.
- 3 nights dinner, bed and breakfast at the **Ladbroke Abbey Park Hotel, York** (AA 3-star, Egon Ronay and Ashley Courtenay recommended, lift, all rooms with private bathroom, telephone 0904 25481).
- Comprehensive holiday insurance (see page 30).

First day Stopping for coffee, we arrive for lunch in Stamford, a charming stone-built town with many interesting old houses. Stamford used to be an important wool centre when Stamford cloth was renowned throughout Europe. After lunch, we continue along the Great North Road before turning off and arriving late afternoon in York. The Abbey Park Hotel is a modernised Georgian building situated near Micklegate Bar, the West Gate of the Norman city. All bedrooms have colour television and tea/coffee making facilities.

Second day The morning is free to explore York, one of the finest medieval cities in Europe. Four gates lead in through walls, built on Roman foundations, that gird the city for 3 miles. Most of the walls are intact and can be followed by a rampart walk. The Ouse flows through the city; narrow streets such as High and Low Petergate link crooked squares; and Georgian grace predominates in Micklegate and St. Saviourgate. Across the short, narrow Shambles old timber-framed houses lean towards one another. York Minster with its majestic towers and priceless stained glass windows, is the pride of the city and took 250 years to complete. Bygone days come alive at the Castle Museum where cobbled streets and reconstructed shop fronts represent periods from Tudor to Edwardian times. In the afternoon, there is an excursion to Knaresborough where Georgian houses gaze sedately across narrow streets; and steep steps and alleys lead down to the River Nidd, which curls round a sandstone cliff. Ruins of a

14th-century castle crown the clifftop, close to the marketplace. On the opposite bank paths lead through beechwoods to the damp and eerie Dropping Well. Water drops on to an overhang, forming a lime deposit, and is slowly petrifying a curious assortment of hats, toys, parasols and other objects strung above the rock face by the owners of the cave since the 19th century.

Third day The morning is at leisure. In the afternoon, there is an excursion to Helmsley, an attractive market town beneath the southern rim of the North Yorkshire Moors. The road drops down to red-roofed houses. Round the market square, creeper and wisteria twine round greystone houses, and cottage gardens back on to a brook flowing down to meet the Rye. We also visit the majestic ruin of Rievaulx Abbey which was founded in 1131 and is one of the earliest Cistercian buildings

in England.

Fourth day The morning is free for a last look at York. We leave after lunch and return direct, stopping for refreshments. Home approximately 2100.

Tues 10 May Thur 27 October

0720	Great Bookham
0725	Fetcham
0730	Leatherhead
0745	Ashted
0735	Epsom
0745	West Ewell
0750	Ewell
0755	Cheam Village
0800	Sutton
0810	Rose Hill
0815	Morden
0820	South Wimbledon
0825	Wimbledon
0830	

Thur 28 July

0715	Epsom
0725	Drift Bridge
0730	Banstead
0740	Wallington
0745	Carshalton
0755	Sutton
0805	North Cheam
0810	Worcester Park
0815	New Malden
0820	Tolworth
0825	Surbiton
0830	Kingston
0835	Hampton Wick
0845	Twickenham



York

Stately Homes and Gardens

3 days £84.00

single room £91.00

Prices include:

- Travel in coach with reclining seats.
- 2 nights dinner, bed and breakfast at the **Old Swan Hotel, Harrogate** (AA 4-star, Ashley Courtenay and Egon Ronay recommended, lift, all rooms with private facilities, telephone 0423 504051).
- Admission to Haddon Hall, Castle Howard and Belvoir Castle.
- Comprehensive holiday insurance (see page 30).

First day Stopping for coffee, we arrive for lunch in Bakewell, a Derbyshire valley town on the River Wye, surrounded by richly wooded hills stretching to high moorland. In the afternoon, we visit Haddon Hall, probably the most complete and authentic example of a medieval and manorial home to be seen in England. It has romantic associations because of the elopement in 1558 of John Manners with Dorothy Vernon, during her sister's wedding party. Restoration was completed in the 1930's and there are beautiful terraced gardens. Early evening, we arrive in Harrogate and check in at the Old Swan Hotel which has a rich history dating back to 1700. Its walls are flanked by cherry blossom in Spring and clad with Virginia creeper in Summer. It is surrounded by four acres of lawns and rose beds and the beautiful Valley Gardens are just around the corner. Recreational facilities include tennis courts, a croquet lawn and a putting green. All bedrooms have colour television and tea/coffee making facilities.

Second day The morning is free in Harrogate which became famous when it was fashionable to 'take the waters'. Harrogate is known as the 'Garden Resort' and banks of flowers and



Castle Howard

well-planned open spaces characterise the town, with 200 acres of grassland, called the 'Stray', probing into its very centre. Beyond the fine Valley Gardens are extensive pinewoods, laced with paths. Harlow Car Gardens are about a mile west of the town centre. In the afternoon, we visit Castle Howard which was recently featured in the television series 'Brideshead Revisited'. This magnificent 18th-century palace was the first major work of Sir John Vanbrugh, and contains a unique collection of famous pictures, furniture, tapestries and porcelain. Features of particular interest are the Long Gallery, the Chapel, and the Great Hall surmounted by a painted and gilded dome. Castle Howard is set in extensive grounds which include lakes, a fountain, Vanbrugh's beautiful Temple of the Four Winds and the Mausoleum designed by Hawksmoor. The Costume Galleries in the stable court contain the largest private collection in Britain of 18th-20th century dress, exhibited in period settings.

Third day We leave Harrogate and stopping for coffee and lunch, arrive for an afternoon visit

to Belvoir Castle which occupies a commanding position overlooking the beautiful Vale of Belvoir. Once inside Belvoir Castle, you are free to enjoy the magnificent State Rooms, beautiful works of art, a historic Armoury of Weapons and a permanent Military Museum of the 17/21st Lancers. The attractive Statue Garden is also open to the public and refreshments are available inside the Castle. A further refreshment stop will be made on the return journey. Home approximately 2000.

Tues 19 April Fri 9 September

0650	Great Bookham
0655	Fetcham
0700	Leatherhead
0705	Ashted
0715	Epsom
0720	West Ewell
0725	Ewell
0730	Cheam Village
0740	Sutton
0745	Rose Hill
0750	Morden
0755	South Wimbledon
0800	Wimbledon

Fri 8 July

0645	Epsom
0655	Drift Bridge
0700	Banstead
0710	Wallington
0715	Carshalton
0725	Sutton
0735	North Cheam
0740	Worcester Park
0745	New Malden
0750	Tolworth
0755	Surbiton
0800	Kingston
0805	Hampton Wick
0815	Twickenham

Yorkshire

8 days £184.00

single room £194.00

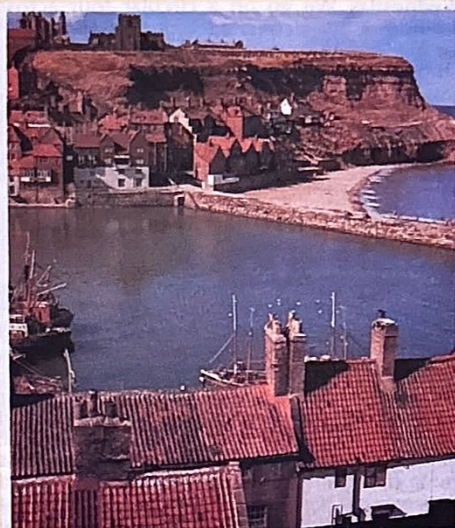
supplement per person for room with private bathroom £8.00

Prices include:

- Travel in coach with reclining seats.
- 7 nights dinner, bed and breakfast at the Hotel St. Nicholas, Scarborough (AA 3-star, Egon Ronay recommended, lift, telephone 0723 64101).
- Comprehensive holiday insurance (see page 30).

First day Stopping for coffee, we arrive for lunch in Stamford, a charming stone-built town with many interesting old houses. Stamford used to be an important wool centre when Stamford cloth was renowned throughout Europe. After lunch, we continue along the Great North Road before turning off to Scarborough and arriving early evening at the Hotel St. Nicholas.

Sunday to Friday One day will be at leisure in Scarborough. On the other days, there will be a combination of day and half-day excursions visiting the following: *Castle Howard* (admission extra). The largest house in Yorkshire is set in magnificent parkland. It was designed by Vanbrugh and contains a fine collection of pictures, statuary and furniture. In the costume galleries in the stable court is the largest collection of 18th-20th century dress in Britain. *Helmsley* The attractive market town is beneath the southern rim of the North Yorkshire Moors. Round the market square, creeper and wisteria twine round grey stone houses, and cottage gardens back on to banks of a brook flowing down to meet the Rye. A 12th-century castle ruin stands, craggy and broken, amid the well-kept lawns of Duncombe Park. *Rievaulx Abbey* The majestic ruin is surrounded by wooded hills. It was founded in 1131 and is one of the earliest Cistercian buildings in England. *Robin Hood's Bay* A narrow main street plunges down to the sea, the little houses and shops crowding close. Once the inhabitants lived by fishing



Whitby

and smuggling. *Sledmere House* (admission extra). Built in 1751, and enlarged by Sir Christopher Sykes in 1787, the house is home of Sir Richard Sykes. Its gardens and parks were designed and executed by Capability Brown. The House contains Chippendale, Sheraton and French furnishings, as well as paintings, porcelain and antique statuary. There is also a unique room decorated with Turkish tiles. *Whitby Colour*, light, sound and smell are woven into the bright fabric of this fishing port and seaside resort. Above the town, on the high headland over the Esk, are the jagged sandstone ruins of Whitby Abbey. West of the Esk, are sandy beaches, and along the river the nucleus of the old town crowds together in a jumble of narrow streets, where fishermen still mend their nets and little shops sell craftsmen's wares. *York* One of the finest medieval cities in Europe. You can walk along

the old city walls and in the narrow streets with overhanging gables, also visit the pride of the city, the great Minster with its majestic towers and priceless stained glass windows. Bygone days come alive at the Castle Museum where cobbled streets and reconstructed shop fronts represent periods from Tudor to Edwardian times.

Last day Stopping for coffee, we make a short detour to Lincoln for lunch. The city has a magnificent triple-towered Cathedral on a hill overlooking the River Witham. Medieval houses line the steep cobbled streets and a Roman arch spans the main road. We stop for further refreshments. Home approximately 2000.

Scarborough Fishing village, seaside town, spa, historic site – Scarborough merges them all into a splendour of cliff scenery and sandy bays. In the harbour, cobbles and mules (traditional fishing vessels), drifters and trawlers nose in and out alongside the covered fish market. The headland is crowned by Scarborough Castle, a magnificent 12th century relic above the cliffs.

Hotel St. Nicholas The hotel has a superb position on St. Nicholas Cliff commanding magnificent views. It has a central location and is conveniently situated for the main shopping areas, beaches and Spa Centre facilities. The Craig-Tyler family have owned and managed the hotel for over 30 years. In the evenings, you can relax in the cocktail lounge overlooking South Bay.

Sat 18 June

0725	Great Bookham
0730	Fetcham
0735	Leatherhead
0740	Ashted
0750	Epsom
0755	West Ewell
0800	Ewell
0810	North Cheam
0815	Worcester Park
0820	New Malden
0830	Kingston
0835	Hampton Wick
0845	Twickenham

Lake District

4 days £102.00

single room £112.00

Prices include:

- Travel in coach with reclining seats.
- 3 nights dinner, bed and breakfast at the Derwentwater Hotel, Portinscale, near Keswick (AA 3-star, lift, all rooms with private facilities, telephone 0596 72538).
- Comprehensive holiday insurance (see page 30).

First day Stopping for coffee, we arrive in Lichfield for lunch. The city is dominated by the Cathedral's three graceful sandstone spires, known as 'The Ladies of the Vale'. In the market place is Doctor Johnson's birthplace which is now a museum. Making a stop for tea, we continue to Portinscale, arriving early evening at the Derwentwater Hotel which is delightfully situated in its own private gardens sloping down to the edge of Derwentwater. The hotel has comfortable lounges, a spacious dining room with beautiful views of the lake and a delightful cocktail bar.

Second day In the morning we go via Bassenthwaite Lake and Crummock Water to Buttermere, a beautiful valley, in which Buttermere Lake is hemmed in by high mountains. The coffee stop is in Cockermouth, one of the oldest towns in west Cumbria, and the birthplace of the poet Wordsworth. You will have a little time to visit the house where Wordsworth was born: the pleasant garden is referred to in his 'Prelude'. Later, we stop in Keswick for lunch and sightseeing. A moot hall is in the middle of the main square and Greta Hall north of the square was the home of the poet Robert Southey. Keswick is on the northern extremity of Derwentwater and you will have an opportunity to go on a boat trip. Being just



Buttermere

over a mile from Portinscale, it is possible to walk back to the hotel from Keswick along a foot path. The rest of the day is free to relax and enjoy the surrounding countryside.

Third day We go via Ullswater and Brothers Water across the lofty Kirkstone Pass to Windermere where we stop for lunch in Bowness, a popular resort on an attractive bay. Continuing along the banks of Windermere to Newby Bridge, we pass Coniston Water and make a short stop in Coniston, a weather-beaten village in a beautiful position. The tea stop is in the picturesque village of Grasmere where you can visit Dove Cottage, another former home of the poet Wordsworth. Grasmere is also noted for its perfume and gingerbread. We return via Thirlmere to Portinscale.

Fourth day Stopping for coffee, we go via Knutsford where Mrs. Gaskell lived, across the Derbyshire Peaks to Bakewell for lunch. A valley town on the River Wye, Bakewell is surrounded by richly wooded hills stretching to high moorland. The town is famous for its tarts which originated at the Rutland Arms. We continue along the Derwent valley among woodland and hills, with dramatic views of peaks and crags. Further refreshment stops will be made on the homeward journey. Home approximately 2000.

Thur 12 May

Thur 14 July

Thur 15 September

0715	Epsom
0725	Drift Bridge
0730	Banstead
0740	Wallington
0745	Carshalton
0755	Sutton
0805	North Cheam
0810	Worcester Park
0815	New Malden
0820	Tolworth
0825	Surbiton
0830	Kingston
0835	Hampton Wick
0845	Twickenham

Tues 14 June

Tues 16 August

0720	Great Bookham
0725	Fetcham
0730	Leatherhead
0735	Ashted
0745	Epsom
0750	West Ewell
0755	Ewell
0800	Cheam Village
0810	Sutton
0815	Rose Hill
0820	Morden
0825	South Wimbledon
0830	Wimbledon

ENGLAND AND WALES

Border Country

5 days £142.00

single room £149.00

Prices include:

- Travel in coach with reclining seats.
- 4 nights dinner, bed and breakfast at the White Swan Hotel, Alnwick (AA 3-star, Egon Ronay recommended, lift, all rooms with private bathroom, telephone 0665 602109).
- Comprehensive holiday insurance (see page 30).

Monday Stopping for coffee, we arrive in Newark-on-Trent for lunch. The town lies east and south of the canalised section of the River Trent that carries barge traffic beneath the grey stone walls of Newark Castle. Newark has a cobble-stoned market-place and two attractive 14th-century inns. We stop for tea in Richmond, one of Yorkshire's most attractive towns where from the top of the 11th century castle keep is one of northern England's finest views, across dales sweeping down to the Vale of York. Early evening, we arrive in Alnwick and check in at the White Swan Hotel which is centrally located and close by the Hotspur Gate. The history of the hotel dates back to medieval times and traces the passage of the highwaymen and the Edinburgh to London stagecoaches. All bedrooms have colour television and tea/coffee making facilities.

Tuesday We go on a day excursion up the Northumbrian coast visiting Bamburgh, Holy Island and Berwick-upon-Tweed. **Bamburgh** Dominating this peaceful village is the enormous stone pile of Bamburgh Castle, once the seat of the first kings of Northumbria. The rocky fortress and the golden sands have been the setting for many films. **Holy Island** Also known as Lindisfarne, Holy Island is approached across a causeway. There are ruins of a Benedictine priory and a small castle. The limestone cliffs and sand-dunes of the north shore are a playground for the swarming bird life from the Farne Islands, and seals can often be seen offshore. **Berwick-upon-Tweed** The northernmost town of England was once a great port of Scotland, and it changed hands 13 times before finally becoming English territory in 1482. A 2-mile walk leads round the top of the town's Elizabethan walls.

Wednesday We go on a circular tour across the border into Scotland, stopping in Jedburgh for lunch. The route passes through Rothbury, Otterburn, Kelso, Coldstream and Wooler and stops are made for coffee and tea. **Rothbury** There is an atmosphere of a Victorian watering place about the busiest market town in Coquetdale, with its stone houses and shops grouped along a steep sloping green on the north bank of the river. **Otterburn** The town earned itself a place in history with the Battle of Otterburn, fought 1½ miles to the north-west in 1388. A wool industry survives in the village, and at Otterburn Mill, where a watermill is still in use, visitors can see tweeds being made. **Jedburgh** The ancient town was once the favourite residence of Scottish kings. Jedburgh Castle, built in the 12th century, changed hands many times in the Border battles, and the Scottish Parliament had it destroyed because the English seemed to be getting more advantage from it. The roofless ruins of Jedburgh Abbey are magnificent and the restored Norman tower is one of the finest medieval buildings in Scotland. The house where Mary, Queen of Scots stayed in 1566, is now a museum. **Kelso** The market town has a wide, cobbled square, colour-washed buildings and lanes overlooking the Tweed. Scott described it as 'the most beautiful, if not the most romantic, village in Scotland'. **Coldstream** In the small town for centuries warring Scottish and English armies forded the Tweed. **Wooler** The town is on the fringe of the Cheviot Hills. South of the market-place is the mound of the Norman castle that guarded one of the highways to the south.

Thursday In the morning, there is a short excursion to Warkworth. For more than four centuries, Warkworth Castle was one of the most important castles in the north of England. Towering above the Coquet and wooded cliffs, it presents a dominating picture whether viewed from the medieval bridge, from the top of the village street, or from the river bank itself. The afternoon is free in Alnwick, a centuries-old town with a colourful history. You can visit Alnwick Castle, which has been the seat of the Percy family since Norman times. The rugged appearance of this famous Border fortress belies the rich elegance of the

interior. The Keep, Armoury, Guard Chamber, Library and other Principal Apartments are on view in addition to the Dungeon, State Coach and Museum of British and Roman Antiquities. There are pictures by Titian, Canaletto, Van Dyck and other famous artists, fine furniture, Meissen china and various historical heirlooms.

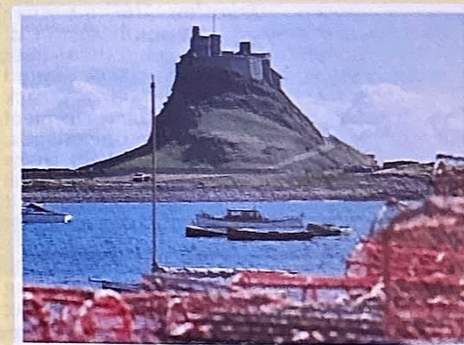
Friday The coffee stop is in Durham. In the heart of Durham city is a steep wooded bluff enclosed by a horseshoe bend of the river; here stand the majestic Cathedral and Castle of the Prince Bishops. We stop for lunch in Harrogate, a spa town with dignified Victorian architecture, banks of flowers and well-planned open spaces. The journey continues south making further stops for refreshments. Home approximately 2100.

Mon 20 June

0645 Epsom
0655 Drift Bridge
0700 Banstead
0710 Wallington
0715 Carshalton
0725 Sutton
0735 North Cheam
0740 Worcester Park
0745 New Malden
0750 Tolworth
0755 Surbiton
0800 Kingston
0805 Hampton Wick
0815 Twickenham

Mon 22 August

0650 Great Bookham
0655 Fetcham
0700 Leatherhead
0705 Ashted
0715 Epsom
0720 West Ewell
0725 Ewell
0730 Cheam Village
0740 Sutton
0745 Rose Hill
0750 Morden
0755 South Wimbledon
0800 Wimbledon



Lindisfarne Castle, Holy Island

North Wales Coast and Snowdonia

4 days £112.00 (May £105.00)

single room £118.50 (May £111.50)

Prices include:

- Travel in coach with reclining seats.
- 3 nights dinner, bed and breakfast at St. George's Hotel, Llandudno (AA 3-star, Egon Ronay and Ashley Courtenay recommended, lift, all rooms with private facilities, telephone 0492 77544).
- Comprehensive holiday insurance (see page 30).

First day We go out via the Thames Valley and Chiltern Hills, stopping for coffee, before entering the Cotswolds and Vale of Evesham. The lunch stop is in Worcester which has a majestic cathedral overlooking the River Severn. Later we go via Kidderminster and Shrewsbury across the border into Wales, stopping in Llangollen for tea. We continue via Betws-y-coed and the Valley of Conwy to Llandudno, arriving early evening at St. George's Hotel. The hotel overlooks the beautiful promenade and bay. All bedrooms have colour television and tea/coffee making facilities.

Second day The morning will be free in Llandudno. The resort has two magnificent sandy bays, one enclosed by the headlands of Great Orme and Little Orme, the other stretching from the west to the Conwy estuary. Llandudno has beautiful flower and rock gardens, also a fine promenade. In the afternoon, we go on a tour of Snowdonia which the Welsh call the 'Eagle's Nesting Place'. The national park is a region of wild mountains, wood-fringed lakes and cascading waterfalls. Snowdon is over 3000 feet above



Capel Curig

sea level and the highest mountain in England and Wales.

Third day After a late start, we stop for coffee in Conwy, a town unforgettable for its massive castle above the River Conwy and the medieval walls which surround it. It is possible to walk along the castle's 15 foot thick walls, which are built in the shape of a Welsh harp. We continue along the North Wales coast to Bangor, then across the Menai Bridge to the island of Anglesey which is still remembered in Welsh history as the place where the Druids

made their fiercest stand against their Roman conquerors. The lunch stop is in Beaumaris which took its name from the Norman 'beau marais' meaning 'beautiful marsh'. Today, this little town is one of the most attractive in Wales, with early Victorian terraces designed by Joseph Hansom, of cab fame, half-timbered houses and a splendid medieval castle. Returning to the mainland, we drive to Caernarfon which overlooks the Menai Strait and is the ceremonial capital of Wales. You can visit the magnificently preserved castle where Prince Charles was invested Prince of Wales in 1969.

Fourth day We drive direct to Chester where you will have time for a little sightseeing and lunch. The former Roman city has streets full of black-and-white half-timbered houses, old taverns, arcaded shops known as the 'Rows' and a beautiful Cathedral which was once a Benedictine Abbey. We stop for tea in Stratford-upon-Avon, a lovely old market town rich in half-timbered houses and memories of Shakespeare. A further stop will be made for refreshment. Home approximately 2030.

Fri 1 April Tues 19 July

0655 Great Bookham
0700 Fetcham
0705 Leatherhead
0710 Ashted
0720 Epsom
0725 West Ewell
0730 Ewell
0740 North Cheam
0745 Worcester Park
0750 New Malden
0800 Kingston
0805 Hampton Wick
0815 Twickenham

Thur 19 May Tues 20 September

0645 Epsom
0655 Drift Bridge
0700 Banstead
0710 Wallington
0715 Carshalton
0725 Sutton
0735 North Cheam
0740 Worcester Park
0745 New Malden
0750 Tolworth
0755 Surbiton
0800 Kingston
0805 Hampton Wick
0815 Twickenham

Llandudno

6 days £178.00

single room £189.00

Prices include:

- Travel in coach with reclining seats.
- 5 nights dinner, bed and breakfast at St. George's Hotel, Llandudno (AA 3-star, Egon Ronay and Ashley Courtenay recommended, lift, all rooms with private facilities, telephone 0492 77544).
- Comprehensive holiday insurance (see page 30).

Monday We go via the Thames Valley and Chiltern Hills to the pleasant town of Woodstock for coffee; then into the Cotswolds through Chipping Norton, Moreton-in-Marsh and Broadway. Crossing the Vale of Evesham, we continue via Pershore to Worcester for lunch. You will have a little time to visit Worcester Cathedral which overlooks the River Severn. After lunch, we go via Kidderminster, Bridgnorth and Shrewsbury across the Welsh border to Llangollen for tea. Llangollen is a riverside town surrounded by meadows, woods and mountains in the Vale of Llangollen. We drive on via Corwen and the Vale of Conwy to Llandudno, arriving early evening at St. George's Hotel.

Tuesday to Friday During our stay, there will be at least two half-days at leisure in Llandudno. We will also be visiting the following: *Beaumaris* In Anglesey and one of the most attractive towns in Wales, Beaumaris has many half-timbered buildings and the remains of a moated castle built to guard the Menai Strait. *Bodnant Garden* (admission extra, National Trust). One of the finest gardens in Britain, Bodnant contains flowering shrubs, trees, rhododendrons and flowering magnolias. *Caernarfon* The ancient town overlooks the Menai Strait and is the ceremonial capital of Wales. You can see the



Beaumaris Castle

magnificently preserved Castle where Prince Charles was invested Prince of Wales in 1969. *Conwy* The town is unforgettable for its massive castle above the River Conwy and the medieval walls which surround it. It is possible to walk along the castle's 15 foot thick walls, which are built in the shape of a Welsh harp. *Plas Newydd* (admission extra, National Trust). The 18th-century house built by James Wyatt, is in an unspoilt position adjacent to the Menai Strait with magnificent views of Snowdonia. You can see Rex Whistler's largest wall painting. *Portmeirion* (admission extra). One of the showplaces of North Wales and a product of the imagination and enterprise of the architect Sir Clough Williams Ellis, the village is similar in spirit to Portofino in Italy and surrounded by wild gardens full of exotic plants. *Snowdonia National Park* The Welsh 'call Snowdonia the 'Eagle's Nesting Place'. It is a region of wild mountains, wood-fringed

lakes and cascading waterfalls. Snowdon is over 3000 feet above sea level and the highest mountain in England and Wales.

Last day We drive direct to Chester where you will have time for a little sightseeing and lunch. The former Roman city has streets full of black-and-white half-timbered houses, old taverns, arcaded shops known as the 'Rows' and a beautiful Cathedral which was once a Benedictine Abbey. We return direct, stopping for refreshments. Home approximately 2030.

Llandudno Although Llandudno is the largest of all Welsh resorts, it has retained its character. The principal beach, North Shore, consists mainly of a magnificent crescent bay, with good bathing and firm sand. It is contained by two headlands, Great Ormes Head and Little Ormes Head. You can reach Great Ormes Head by road, cable car, funicular railway or on foot through the delightful Happy Valley.

St. George's Hotel The hotel overlooks the beautiful promenade and bay. Since it was acquired by Mr. and Mrs. Michael Forte in 1977, a transformation has taken place which has served to bring back the character of this historic hotel to the pristine qualities originally envisaged by the founders in 1853. All bedrooms have colour television and tea/coffee making facilities.

Mon 6 June

0655	Great Bookham
0700	Fetcham
0705	Leatherhead
0710	Ashted
0720	Epsom
0725	West Ewell
0730	Ewell
0740	North Cheam
0745	Worcester Park
0750	New Malden
0800	Kingston
0805	Hampton Wick
0815	Twickenham

Welsh Coast and Mountains

5 days £158.00

single room £171.00

Prices include:

- Travel in coach with reclining seats.
- 2 nights dinner, bed and breakfast at the Royal Hotel, Llangollen (AA 3-star, Egon Ronay recommended, all rooms with private bathroom, telephone 0978 860202).
- 2 nights dinner, bed and breakfast at St. Bride's Hotel, Saundersfoot (AA 3-star, all rooms with private bathroom, telephone 0834 812304).
- Comprehensive holiday insurance (see page 30).

Monday We stop for coffee in Henley-on-Thames. Crossing the Chiltern Hills, we continue via Dorchester-on-Thames and Woodstock into the Cotswolds through Moreton-in-Marsh and Broadway to the Vale of Evesham. The lunch stop is in Worcester which has a majestic cathedral overlooking the River Severn. In the afternoon, we continue via Kidderminster, Bridgnorth and Shrewsbury across the border into Wales, arriving in Llangollen at tea-time. Llangollen is a beautiful riverside town surrounded by meadows, woods and mountains in the Vale of Llangollen. It is famous for its International Musical Eisteddfod, held annually during the first week in July. The town's 14th-century bridge over the Dee, is one of the traditional 'Seven Wonders of Wales'. We stop in the Royal Hotel which stands on the bank of the River Dee near the famous bridge. The Royal received its present name after the visit of Princess Victoria and the Duchess of Kent in 1832. It was the stopping-place for the Irish Mail coaches in the 19th century. All bedrooms have colour television and tea/coffee making facilities.

Tuesday After a late start, we go via Maes-yr-Yachen to Ruthin for coffee. The

charming old town of Ruthin is set on a hill overlooking the River Clwyd and has many interesting old buildings. We continue via St. Asaph to the North Wales coast, stopping for lunch in Llandudno. The well-known seaside resort has two magnificent sandy bays, one enclosed by the headlands of Great Orme and Little Orme, the other stretching from the west to the Conwy estuary. We return via the Vale of Conwy and Betws-y-Coed, one of the loveliest villages in Wales, surrounded by woods, hills, glens and rivers.

Wednesday We go via Bala Lake to Dolgellau for coffee. The grey-walled, slate-roofed market town is situated near the head of the picturesque Mawddach estuary. Later we pass through Machynlleth to Aberystwyth for lunch. The county town of Dyfed is a popular seaside resort with an interesting harbour and good bathing beaches. It is situated on Cardigan Bay at the mouth of two rivers. Next we stop at Cenarth which is picturesquely situated on the River Teifi. Here you can still see coracle fishing vessels which have changed little since the Iron Age and are made of canvas stretched over wickerwork frames. Early evening, we arrive in Saundersfoot at St. Bride's Hotel which is in a superb position in its own grounds overlooking Carmarthen Bay. There is a heated indoor swimming pool and all rooms have tea/coffee making facilities.



Lake and mountain scene

Thursday After a late start, we drive into Tenby for sightseeing and lunch. The attractive resort has narrow streets, houses, shops and cafes built against the ruins of the old town walls. There are beautiful bays and a colourful harbour. You can go to Caldy Island which has an ancient priory church and modern monastery where you can buy perfumes produced by Cistercian monks. The tea stop is in St. David's which is named after the patron saint of Wales and is Britain's smallest cathedral city. A place of pilgrimage for over eight centuries, St. David's is situated on a rugged western peninsula.

Friday Stopping for coffee, we arrive in Cardiff for lunch. The capital city of Wales has a magnificent civic centre with many fine buildings, also an impressive castle built on the site of a Roman fort. Leaving Wales, we cross the Severn Bridge and go via Chippenham and Calne to Marlborough for tea. The ancient town has a broad High Street of splendid Georgian buildings and colonnaded shops, obscuring many fascinating back alleys and quaint, medieval, half-timbered cottages. Marlborough has attracted tourists since the days of the stage-coach and has an excellent selection of places where you can get afternoon tea. Home approximately 2000.

Mon 11 July

0655	Great Bookham
0700	Fetcham
0705	Leatherhead
0710	Ashted
0720	Epsom
0725	West Ewell
0730	Ewell
0740	North Cheam
0745	Worcester Park
0750	New Malden
0800	Kingston
0805	Hampton Wick
0815	Twickenham

Mon 12 September

0645	Epsom
0655	Drift Bridge
0700	Banstead
0710	Wallington
0715	Carshalton
0725	Sutton
0735	North Cheam
0740	Worcester Park
0745	New Malden
0750	Tolworth
0755	Surbiton
0800	Kingston
0805	Hampton Wick
0815	Twickenham

A Welsh Welcome

2 days £49.00

single room £53.00

Prices include:

- Travel in coach with reclining seats.
- Full board and entertainment from afternoon tea on Saturday to lunch on Sunday at the Hotel Metropole, Llandrindod Wells (lift, all rooms with private bathroom, telephone 0597 2881).
- Comprehensive holiday insurance (see page 30).

Saturday We go out via the Thames Valley and Chiltern Hills to Woodstock for coffee. Next we enter the Cotswolds, passing through Chipping Norton, Moreton-in-Marsh and Broadway. We continue via the Vale of Evesham and Pershore to Worcester for lunch. You will have a little time to visit the beautiful cathedral which overlooks the River Severn. After lunch, we go via Leominster and Kington to Llandrindod Wells arriving at the Hotel Metropole in time for Welsh cakes and tea. The spacious hotel was built by the great grandmother of the present owners in the Edwardian heyday of Llandrindod Wells as a spa. Later you will enjoy a 'Taste of Wales' dinner and dance; also a concert by the Rhayadar Male Voice Choir in February and a Welsh harpist in December.

Sunday After breakfast, you will have a little time to explore Llandrindod Wells which is on a high plateau overlooking the River Ithon. The town has wide streets and fine



Elan Valley Dam

architecture. There is a short morning excursion to the Elan Valley, a beautiful area around a chain of lakes built as reservoirs piping water to Birmingham. Submerged beneath the rippling waters are the few stones that remain of Shelley's house. We return to the hotel for lunch before commencing the homeward journey. Going via Builth Wells and the Black Mountains to Abergavenny, we continue along the Usk Valley to Chepstow, then across the Severn Bridge. Stops will be made for refreshments. Home approximately 2000.

Sat 19 February

0655 Great Bookham
0700 Fetcham
0705 Leatherhead
0710 Ashtead
0720 Epsom
0725 West Ewell
0730 Ewell
0740 North Cheam
0745 Worcester Park
0750 New Malden
0800 Kingston
0805 Hampton Wick
0815 Twickenham

Sat 17 December

0645 Epsom
0655 Drift Bridge
0700 Banstead
0710 Wallington
0715 Carshalton
0725 Sutton
0735 North Cheam
0740 Worcester Park
0745 New Malden
0750 Tolworth
0755 Surbiton
0800 Kingston
0805 Hampton Wick
0815 Twickenham

Tenby

8 days £186.00

supplement for single room with private facilities £9.00

Prices include:

- Travel in coach with reclining seats.
- 7 nights dinner, bed and breakfast at the Hotel Fourcroft, Tenby (AA 2-star, lift, twin and double rooms all with private facilities, telephone 0834 2516).
- Comprehensive holiday insurance (see page 30).

First day Stopping for coffee, we drive through Berkshire, Wiltshire and Avon across the Severn Bridge into Wales. The lunch stop is in Cardiff, capital city of Wales with a magnificent civic centre and an impressive castle. Later we drive along the Vale of Glamorgan and stop for tea in Carmarthen, birthplace of the wizard Merlin. Early evening we arrive in Tenby at the Hotel Fourcroft.

Sunday to Friday One day will be at leisure. On the remaining days, we will visit the following: *Cardigan* Pleasant country town approached by an ancient seven-arched bridge over the River Teifi. *Cenarth* Picturesquely

situated on the River Teifi. Where the ancient art of fishing from coracles is still practised. *Fishguard* Picturesque port, with a fine bay, surrounded by cliffs. An inscribed stone recalls the last invasion of British soil; a party of French mistook red-cloaked women for guardsmen and surrendered. *Laugharne* Parts of this ancient town are still charming with an old harbour and castle, also splendid sea views. You can visit the Boat House where Dylan Thomas lived – situated in Cliff Walk just behind the Castle. *Manorbier* A village built round the ruins of an impressive, moated Norman castle overlooking a beautiful bay of the same name. *Newcastle Emlyn* Busy little market town on the River Teifi. On the east side are remains of the 15th century castle called New Castle to distinguish it from an older castle further down the river. *Pembroke* Small town with one of the largest and most impressive Norman castles in Britain, surrounded on three sides by water. *Haverfordwest* Pleasant market town with steep streets, a fine church and an old Norman castle. *St. David's* Britain's smallest cathedral city, named after St. David, patron saint of

Wales. Near the Cathedral are the ruins of the medieval Bishop's Palace. Situated on a rugged western peninsula within easy reach of some of Britain's finest cliffs and bays.

Saturday We go via Carmarthen, Llandovery and Brecon to Abergavenny, then to Monmouth along the Wye Valley to Ross for lunch. Ross-on-Wye is a charming old market town overlooking a horseshoe bend of the River Wye with fine views of the Welsh hills. The journey continues via Gloucester and Cheltenham across the Cotswolds to Bourton-on-the-Water for tea. Bourton-on-the-Water is a lovely old village on the River Windrush with many stone houses, miniature bridges and riverside greens. We return via the Chiltern Hills and Thames Valley. Home approximately 2000.

Tenby The attractive resort has narrow streets and houses, shops and cafes built against the ruins of the 13th-century town walls. Set on a rocky promontory, the town overlooks two great bays, both sandy. Caldy Island, 2½ miles out from Tenby and reached by launch, has an ancient priory church and a modern monastery. The Cistercian monks at Caldy produce perfumes.

Hotel Fourcroft The hotel is independently owned and managed by Mr. and Mrs. Osborne and is the first Tenby hotel to receive a British Tourist Authority Commendation. Set on a cliff top above Tenby's North Beach, the Fourcroft has magnificent views of Carmarthen Bay and Tenby Harbour. Over 150 years old and officially designated as a building of 'special architectural and historic interest', the hotel is sited in the peaceful and most select part of the town. The unique cliff garden leads directly on to the beach. All bedrooms have television and tea and coffee making facilities.

Sat 3 September

0655 Great Bookham
0700 Fetcham
0705 Leatherhead
0710 Ashtead
0720 Epsom
0725 West Ewell
0730 Ewell
0740 North Cheam
0745 Worcester Park
0750 New Malden
0800 Kingston
0805 Hampton Wick
0815 Twickenham



Gardens of the Hotel Fourcroft, Tenby

The Gower and Pembrokeshire Coast

3 days £80.00

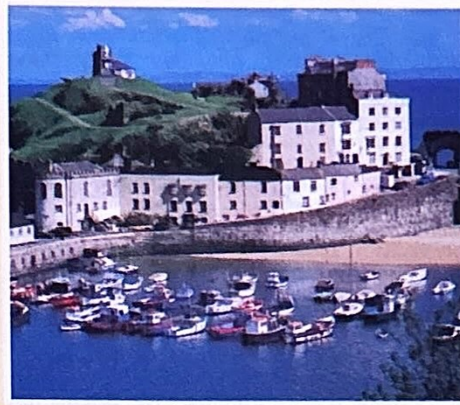
single room £85.00

Prices include:

- Travel in coach with reclining seats.
- 2 nights dinner, bed and breakfast at the Dragon Hotel, Swansea (AA 4-star, Egon Ronay recommended, lift, all rooms with private bathroom, telephone 0792 51074).
- Comprehensive holiday insurance (see page 30).

First day The coffee stop is in Henley-on-Thames, a pleasant riverside town renowned for its Royal Regatta. Crossing the Chiltern and Cotswold Hills, we go via Cheltenham and Gloucester to Ross-on-Wye for lunch. Ross is a charming old market town overlooking a horseshoe bend of the River Wye with fine views of the Welsh Hills. We continue via Monmouth and the Vale of Neath to Swansea, arriving late afternoon at the Dragon Hotel which was opened in 1961 and is situated in Swansea's modern city centre. All bedrooms have colour television and tea/coffee making facilities.

Second day We go via Carmarthen to Tenby for lunch. The attractive resort has narrow streets, houses, shops and cafes built against the ruins of the old town walls. There are beautiful sandy bays and a colourful harbour. We stop for tea in St. David's, Britain's



Tenby

smallest cathedral city, named after St. David, patron saint of Wales. St. David's is situated on a rugged western peninsula within easy reach of some of Britain's finest cliffs and bays. After dinner, there will be a short illuminations drive around Swansea Bay to Mumbles.

Third day We go on a short tour of the Gower Peninsula, an area of outstanding natural beauty noted for its magnificent coast scenery with rocks, cliffs and caves. Next we drive

direct to Cardiff where we stop for lunch. The capital city of Wales has a magnificent civic centre with many fine buildings, including the University College, National War Memorial and National Museum of Wales. Cardiff Castle, situated in the centre of the city, is built on the site of a Roman fort. Leaving Wales, we cross the Severn Bridge and stop for tea in the ancient Roman city of Bath. Bath has the only natural hot springs in Britain; also the Roman Baths and Pump Room which are Britain's most complete Roman remains. A popular spa in Georgian times, the city also has many fine Georgian buildings. We continue via Chippenham, Marlborough and Newbury, making a further stop for refreshment. Home approximately 2030.

**Fri 29 April
Fri 12 August**

0655 Great Bookham
0700 Fetcham
0705 Leatherhead
0710 Ashtead
0720 Epsom
0725 West Ewell
0730 Ewell
0740 North Cheam
0745 Worcester Park
0750 New Malden
0800 Kingston
0805 Hampton Wick
0815 Twickenham

**Fri 17 June
Fri 14 October**

0645 Epsom
0655 Drift Bridge
0700 Banstead
0710 Wallington
0715 Carshalton
0725 Sutton
0735 North Cheam
0740 Worcester Park
0745 New Malden
0750 Tolworth
0755 Surbiton
0800 Kingston
0805 Hampton Wick
0815 Twickenham

Grand Tour of Scotland

8 days £242.00

single room £263.00

Prices include:

- Travel in coach with reclining seats.
- Dinner, bed and breakfast on the first night at the Cumbrian Hotel, Carlisle (AA 3-star, lift, all rooms with private bathroom, telephone 0228 31951).
- 4 nights dinner, bed and breakfast at Scotland's Hotel, Pitlochry (AA 3-star, lift, all rooms with private bathroom, telephone 0796 2292).
- Dinner, bed and breakfast on the sixth night at the Carlton Hotel, Edinburgh (AA 3-star, lift, all rooms with private bathroom, telephone 031 556 7277).
- Dinner, bed and breakfast on the last night at the Three Tuns Hotel, Durham (AA 3-star, lift, all rooms with private bathroom, telephone 0385 64326).
- Afternoon tea at Gleneagles Hotel.
- Admission to Blair Castle.
- Comprehensive holiday insurance (see page 30).

Saturday Stopping for coffee, we arrive in Lichfield for lunch. The charming city is dominated by the cathedral's three graceful spires, known as 'The Ladies of the Vale'. Lichfield has associations with Doctor Johnson, whose birthplace overlooks the market square. Making a further stop for tea, we arrive early evening in Carlisle and check in at the Cumbrian Hotel which is in the town centre. The hotel is elegantly Victorian outside and totally up to date inside. All bedrooms have colour television and tea/coffee making facilities. The county capital of Cumbria was frequently raided by the Scots throughout its stormy early history. Carlisle has several fine streets, an 11th century cathedral and castle where Mary, Queen of Scots was imprisoned in 1568.

Sunday A short stop is made at Greta Green to see the blacksmith's shop where runaway couples from England used to be married. We stop for coffee in the charming old town and resort of Moffat on the River Annan in hilly sheep-farming country. The lunch stop is in Stirling, an ancient town with a long and turbulent history. Stirling Castle, perched on a towering rock, was a vital strategic stronghold and the scene of many famous battles, notably the Battle of Bannockburn in 1314. We stop for afternoon tea in Gleneagles, one of the few 5-star hotels in Britain and perhaps the most famous hotel in Scotland. The palatial hotel is framed by faultlessly mown lawns and is

situated in a 700-acre estate including three world-renowned eighteen-hole golf courses. Early evening, we arrive in Pitlochry and check in at Scotland's Hotel which is ideally situated beside the main shopping centre and adjacent to both theatre and cinema. From the hotel garden are fine views of the Tummel Valley and hills beyond.

Monday We go along the Tay Valley through Aberfeldy to Loch Tay which is overlooked to the north by Ben Lawers, Perthshire's highest mountain. Later, we drive through Glen Ogle and along the banks of Loch Earn to Crieff for lunch. The pleasant little hillside town overlooks beautiful Strathearn. Outside the Town Hall are old stocks and nearby a medieval cross of red sandstone. We stop for tea at Blair Castle, which looks like a fairy-tale fortress and belongs to the Duke of Atholl. The Castle is in beautiful surroundings and thirty-two rooms of this baronial mansion are on view. A magnificent collection of china, lace, Jacobite relics, arms and armour, pictures and many other family possessions is on display.

Tuesday The whole day is at leisure in Pitlochry, a well-known Highland summer resort and touring centre of the Grampians, in a wooded setting on the River Tummel. A little to the south-east, on a tributary of the Tummel, is the picturesque Black Spout Waterfall. Reached by a path to the north-west, and situated beyond the village of Moulin, is the fine viewpoint of Craigour, the prospect extending westwards across the Tummel Valley to distant Schichallion (3547 feet). The famous 'Theatre in the Hills' presents plays and concerts throughout the summer. Boating on Loch Faskally is a pleasant pastime.

Wednesday We go via the Pass of Killiecrankie and Glen Garry to Aviemore for coffee. Once an unremarkable Speyside village, Aviemore is a resort at the heart of Britain's main winter-sports area. The lunch stop is in the attractive and historic town of Inverness which is referred to as 'The Capital of the Highlands' and is at the mouth of the River Ness. You can see the castle, cathedral and museum with its fascinating Highland exhibits. A tea stop will be made on the return journey.

Thursday We drive direct to Edinburgh via the Forth Road Bridge which is 1½ miles long and runs parallel to the old cantilevered railway bridge. Before lunch, there will be a short orientation tour of Scotland's historic capital. One of the finest cities in the world, Edinburgh is renowned for its beautiful

setting. North of Princes Street is the new part of the city, dating from the 18th century and boasting many noble streets and squares. To the south, beyond the lawns of Princes Street Gardens, lies the Old Town, a fascinating labyrinth of ancient houses and narrow alleys, above which the great castle broods upon its rocky crag. The route from the Castle to the Palace of Holyroodhouse, the official residence of Her Majesty the Queen when in Edinburgh, is known as the Royal Mile. In the afternoon, we check in at the Carlton Hotel which is at the end of North Bridge, overlooking Princes Street, Edinburgh's main shopping area, and the Scott Monument. All bedrooms have colour television and tea/coffee making facilities.

Friday The morning is free in Edinburgh for further shopping and sightseeing. After lunch, we continue via Jedburgh across Northumberland to Durham, arriving early evening at the Three Tuns Hotel which has a long history and has recently been extended and modernised. The hotel is only a few minutes walk from the magnificent Norman cathedral and Castle. All bedrooms have colour television and tea/coffee making facilities.

Friday After breakfast, you will have a little time for sightseeing in Durham. The heart of the city is a deep wooded bluff enclosed by a horseshoe bend of the river: here stand the majestic Cathedral and Castle of the Prince Bishops. We stop for lunch in York, one of the finest medieval cities in Europe. You can walk along the city walls and in the narrow streets with overhanging gables, also visit the pride of the city, the great Minster with its majestic towers and priceless stained glass windows. Further stops will be made for refreshment. Home approximately 2100.

Sat 2 July

0720 Great Bookham
0725 Fetcham
0730 Leatherhead
0735 Ashtead
0745 Epsom
0750 West Ewell
0755 Ewell
0800 Cheam Village
0810 Sutton
0815 Rose Hill
0820 Morden
0825 South Wimbledon
0830 Wimbledon

Sat 3 September

0715 Epsom
0725 Drift Bridge
0730 Banstead
0740 Wallington
0745 Carshalton
0755 Sutton
0805 North Cheam
0810 Worcester Park
0815 New Malden
0820 Tolworth
0825 Surbiton
0830 Kingston
0835 Hampton Wick
0845 Twickenham

Oban and Western Highlands

8 days £225.00

single room £249.00

Prices include:

- Travel in coach with reclining seats.
- Dinner, bed and breakfast on the first night at the Crown and Mitre Hotel, Carlisle (AA 3-star, Egon Ronay recommended, lift, all rooms with private bathroom, telephone 0228 25491).
- 5 nights dinner, bed and breakfast at the Great Western Hotel, Oban (AA 3-star, lift, all rooms with private bathroom, telephone 0631 63101).
- Dinner, bed and breakfast on the last night at the Seaburn Hotel, Seaburn (AA 3-star, Egon Ronay recommended, lift, all rooms with private bathroom, telephone 0783 292041).
- Comprehensive holiday insurance (see page 30).

Saturday Stopping for coffee, we drive direct to Lichfield for lunch. The city is dominated by the Cathedral's three graceful sandstone spires, known as 'The Ladies of the Vale'. In the market place is Doctor Johnson's birthplace which is now a museum. Making a further stop for tea, we arrive early evening in Carlisle and check in at the Crown and Mitre Hotel which is ideally situated in the heart of the historic city, close to the Castle and Cathedral. While retaining all its old world character and charm, the hotel has been entirely modernised to a very high standard. All bedrooms have colour television and tea/coffee making facilities.

Sunday A short stop is made at Gretna Green to see the blacksmith's shop where runaway couples from England used to get married. Later we stop for lunch in Balloch, on the southern shore of Loch Lomond. Following the western shore of Loch Lomond, we continue via Glen Lochy to Oban arriving early evening at the Great Western Hotel. Situated

in the centre of the sea front, the hotel commands a superb view over the exciting activity of the town's harbour. There is plenty of evening entertainment in the town but you may not have to look further than the Great Western's own Hideaway which provides a variety of entertainment of a Scottish flavour throughout the season. All bedrooms have tea/coffee making facilities.

Monday We go on a short day excursion to Fort William, situated at the foot of Ben Nevis, Britain's highest mountain. The West Highland Museum in Fort William High Street contains the famous secret portrait of Bonnie Prince Charlie, which can be seen only when reflected on a curved and polished surface.

Tuesday The whole day is at leisure in Oban for shopping and sightseeing. Overlooking the town is an unusual tower and near the little granite cathedral the ruins of a castle. You can visit Oban Glassworks or go on a steamer excursion to Mull or Iona. Mull is a beautiful island of moorland, forest and peaks and Iona is the cradle of Scottish Christianity.

Wednesday We drive to Loch Leven and along Glen Coe, one of Scotland's wildest and most celebrated glens running between some magnificent mountains to Rannoch Moor. The journey continues via the Bridge of Orchy to Inveraray for lunch. Inveraray is a beautiful white-walled town overlooking Loch Fyne and is the hereditary seat of the Dukes of Argyll whose castle has been the seat of the Campbell clan since the 15th-century.

Thursday The morning is free in Oban. In the afternoon, there is a short excursion to Clachan Bridge, Easdale 'The Bridge over the Atlantic Ocean'. This graceful little bridge links the Isle of Seil and mainland Argyll, which are separated by an arm of the Atlantic.

Friday Stopping for coffee, we proceed to Edinburgh for lunch. Scotland's historic capital is renowned for its beautiful setting and is one



Oban

of the finest cities in the world. Later we go via Melrose and Jedburgh across the border back to England. We arrive early evening at Seaburn Hotel which is on the sea front. Seaburn has wide stretches of sandy beach and a pleasant coastline. It was one of the artist Lowrie's favourite spots and he stayed year after year at the Seaburn Hotel. All bedrooms have colour television and tea/coffee making facilities.

Saturday We stop for coffee in Richmond on market day. The fine old town by the River Swale, is dominated by the striking ruins of a Norman castle. The lunch stop is in York which has old city walls, medieval streets overhung by gables and the Minster with its magnificent towers and priceless stained glass windows. Further stops will be made for refreshment. Home approximately 2100.

Sat 21 May

Sat 10 September

0720	Great Bookham
0725	Fetcham
0730	Leatherhead
0735	Ashtead
0745	Epsom
0750	West Ewell
0755	Ewell
0800	Cheam Village
0810	Sutton
0815	Rose Hill
0820	Morden
0825	South Wimbledon
0830	Wimbledon

Sat 23 July

0715	Epsom
0725	Drift Bridge
0730	Banstead
0740	Wallington
0745	Carshalton
0755	Sutton
0805	North Cheam
0810	Worcester Park
0815	New Malden
0820	Tolworth
0825	Surbiton
0830	Kingston
0835	Hampton Wick
0845	Twickenham

Loch Lomond, Trossachs and Edinburgh

5 days £155.00

single room £179.00

Prices include:

- Travel in coach with reclining seats.
- Dinner, bed and breakfast on the first night at the Ladbrooke Mercury Motor Inn, Moffat (AA 3-star, Egon Ronay and Ashley Courtenay recommended, all rooms with private bathroom, telephone 0683 20464).
- 2 nights dinner, bed and breakfast at the Dunblane Hydro Hotel, Dunblane (AA 3-star, lift, all rooms with private facilities, telephone 0786 82 2551).
- Dinner, bed and breakfast on the last night at the Three Tuns Hotel, Durham (AA 3-star, lift, all rooms with private bathroom, telephone 0385 64326).
- Comprehensive holiday insurance (see page 30).

Monday Stopping for coffee, we arrive in Knutsford for lunch. An attractive town with narrow streets full of black and white houses, Knutsford was the 'Cranford' of Mrs. Gaskell's novel of that name. We continue via Lancashire and Cumbria beyond the Scottish border to Gretna Green to see the blacksmith's shop where runaway couples from England used to be married. Early evening, we arrive in Moffat and check in at the Ladbrooke Mercury Motor Inn, a modern two storey building at the foot of the town square. All bedrooms have colour television and tea/coffee making facilities. Moffat is in Annandale and thrives as the centre of a sheep-farming area. Its popularity as a holiday resort grew from the discovery, in the mid 17th century, that the water from the town's wells had curative qualities. Among the distinguished visitors who came to take the waters was Robert Burns, who composed the drinking song 'O Willie brew'd a peck o' Maut' in Moffat.

Tuesday Crossing the Firth of Clyde, we arrive

for lunch in Balloch situated on the River Leven which flows southwards from Loch Lomond to the Clyde. Later, we drive along the west bank of Loch Lomond, known as the 'Queen of Scottish Lakes'. We pass through Callander, the 'Gateway of the Highlands' and the 'Tannochbrae' of the popular television series 'Dr. Finlay's Casebook'. Early evening we arrive at the Dunblane Hydro Hotel which is situated in beautiful grounds offering magnificent views of the surrounding countryside. There is a heated indoor swimming pool, tennis courts and putting green, sauna, solarium and hotel shop. All bedrooms have colour television and tea/coffee making facilities.

Wednesday In the morning, we visit Stirling, an ancient town with a long and turbulent history. You will have a little time to visit Stirling Castle which, perched on a towering rock, was a vital strategic stronghold and the scene of many famous battles, notably the Battle of Bannockburn in 1314. Later we visit The Trossachs, often called 'The Highlands in Miniature'. The Trossachs lie between three lochs and the Lowlands with birch-covered mountains, dramatic crags, tumbling streams, moorland and glen. Sir Walter Scott stimulated the romantic appeal when his novel 'Rob Roy' and poem 'The Lady of the Lake' started a rush



Loch Lomond

of tourists to the Trossachs early last century. You will have time to go on a steamer excursion on Loch Katrine.

Thursday We drive direct to Edinburgh for a little shopping or sightseeing and lunch. Scotland's historic capital is renowned for its beautiful setting and is one of the finest cities in the world. We continue via Jedburgh across Northumberland to Durham, arriving early evening at the Three Tuns Hotel which has a long history and has recently been extended and modernised. The hotel is only a few minutes walk from the magnificent Norman cathedral and Castle. All bedrooms have colour television and tea/coffee making facilities.

Friday After breakfast, you will have a little time for sightseeing in Durham. The heart of the city is a deep wooded bluff enclosed by a horseshoe bend of the river: here stand the majestic Cathedral and Castle of the Prince Bishops. We stop for lunch in York, one of the finest medieval cities in Europe. You can walk along the city walls and in narrow streets with overhanging gables, also visit the pride of the city, the great Minster with its majestic towers and priceless stained glass windows. Further stops will be made for refreshment. Home approximately 2100.

Mon 6 June

Mon 5 September

0650	Great Bookham
0655	Fetcham
0700	Leatherhead
0705	Ashtead
0715	Epsom
0720	West Ewell
0725	Ewell
0730	Cheam Village
0740	Sutton
0745	Rose Hill
0750	Morden
0755	South Wimbledon
0800	Wimbledon

Mon 25 July

0645	Epsom
0655	Drift Bridge
0700	Banstead
0710	Wallington
0715	Carshalton
0725	Sutton
0735	North Cheam
0740	Worcester Park
0745	New Malden
0750	Tolworth
0755	Surbiton
0800	Kingston
0805	Hampton Wick
0815	Twickenham

Royal Deeside

8 days £235.00

single room £265.00

Prices include:

- Travel in coach with reclining seats.
- Dinner, bed and breakfast on the first night at the Royal Station Hotel, Newcastle (AA 3-star, Egon Ronay recommended, lift, all rooms with private bathroom, telephone 0632 20781).
- 5 nights dinner, bed and breakfast at the Royal Darroch Hotel, Cults (AA 3-star, Ashley Courtenay recommended, lift, all rooms with private bathroom, telephone 0224 868811).
- Dinner, bed and breakfast on the last night at Lumley Castle Hotel, Chester-le-Street (AA 3-star, Ashley Courtenay and Egon Ronay recommended, all rooms with private facilities, telephone 0385 885326).
- Admission to Glamis Castle grounds and Pitmedden Gardens.
- Comprehensive holiday insurance (see page 30).

Saturday Stopping for coffee, we arrive for lunch in Stamford, a charming stone-built town with many interesting old houses. It used to be an important wool centre when Stamford cloth was renowned throughout Europe. The tea stop is in Ripon which has a fine cathedral and many interesting old buildings in the town square. Early evening, we arrive at the Royal Station Hotel which is set in the historic heart of Newcastle. The spacious hotel is a splendid combination of stylish Victoriana and modern convenience. All bedrooms have colour television and tea/coffee making facilities.

Sunday We drive through Northumberland across the border into Scotland, stopping for coffee in Melrose in the centre of Sir Walter Scott country. You can see the ruins of Melrose Abbey where the heart of Robert the Bruce is said to be buried. Crossing the Forth Bridge, we stop for lunch and continue to Glamis Castle for tea. The Castle was designed in the style of a French chateau and built from locally quarried stone. Glamis was where the Queen Mother spent part of her childhood and Princess Margaret was born in 1930. Early evening, we arrive in Cults which is a quiet village only 3 miles from the centre of Aberdeen. The Royal Darroch is one of the leading hotels in the area and only a few minutes walk from the River Dee. All bedrooms have colour television and

tea/coffee making facilities; also little homely touches like a bowl of fresh fruit and a newspaper in the morning.

Monday After a late start, we go via Inverurie to Huntly for lunch. This attractive market town is situated at a point where the River Bogie joins the River Deveron. Huntly makes a pleasant summer resort and is noted for its good fishing facilities. The imposing, ruined Castle was once the home of the Gordon Marquesses of Huntly, the 'Gay Gordons'. Later, we visit a whisky distillery for a short conducted tour.

Tuesday In the morning, we visit Pitmedden Gardens, the centrepiece of 93 acres of woodland and farmland in Aberdeenshire's most fertile farming district. The beautiful 17th century garden is laid out in formal style with pavilions, fountains and sundials. Later, we drive along the coast via Peterhead, Fraserburgh, Macduff and Banff. A lunch stop will be made en route.

Wednesday We go on a tour of Royal Deeside. Passing through Banchory, Aboyne and Ballater we reach Balmoral, the grounds of which will be open to the public in June (not in August when the Royal Family will be in residence). Balmoral has been the summer home of the Royal Family for over 100 years since Queen Victoria chose Deeside as her holiday centre. In August, we will visit Craithie Church where without formality and ceremony the Royal Family joins the parishioners in worship. The lunch stop is in Braemar, a Deeside resort village 1100 feet up in the Highlands, world famous for its Royal Highland Gathering. Later we visit the Falls at Linn of Dee.

Thursday There will be a short morning tour of Aberdeen followed by time for shopping and sightseeing on foot. Aberdeen is a gleaming granite-built city with a busy fish market and

harbour for deep-sea trawlers. It is bordered by fine sandy beaches and backed by the hills, castles and salmon rivers of Royal Deeside and Donside. The city is the third biggest fishing port in Great Britain and Scotland's largest holiday resort. There are many fine buildings including the ancient Cathedral of St. Machar and King's College. Aberdeen has won the 'Britain in Bloom' trophy several times in the last few years.

Friday We follow the coastal road through Stonehaven, Montrose and Arbroath to Dundee, then cross the Tay and Forth Bridges arriving in Edinburgh for lunch. Scotland's historic capital is world renowned for its beautiful setting. After lunch, we go via Lauderdale to Jedburgh for tea. Jedburgh was once a favourite residence of Scottish kings. Next we cross the border into England arriving early evening at Lumley Castle Hotel in Chester-le-Street. The hotel stands amidst beautiful parkland between the ancient cities of Durham and Newcastle. Built in the 13th century, this gracious Castle is ancestral home of the 12th Earl of Scarborough, the present descendant of the Lumley line. All bedrooms have colour television and tea/coffee making facilities.

Saturday We stop for coffee in Durham. The heart of the city is a steep wooded bluff enclosed by a horseshoe bend of the river: here stand the majestic Cathedral and Castle of the Prince Bishops. Later, we stop for lunch in York, one of the finest medieval cities in Europe. It has old city walls, streets overhung by gables and the Minster with its magnificent towers and priceless stained glass windows. Further stops are made for refreshment. Home approximately 2030.



Braemar Castle

Sat 11 June

0720 Great Bookham
0725 Fetcham
0730 Leatherhead
0735 Ashtead
0745 Epsom
0750 West Ewell
0755 Ewell
0800 Cheam Village
0810 Sutton
0815 Rose Hill
0820 Morden
0825 South Wimbledon
0830 Wimbledon

Sat 6 August

0715 Epsom
0725 Drift Bridge
0730 Banstead
0740 Wallington
0745 Carshalton
0755 Sutton
0805 North Cheam
0810 Worcester Park
0815 New Malden
0820 Tolworth
0825 Surbiton
0830 Kingston
0835 Hampton Wick
0845 Twickenham

Guernsey by Sea

6 days £163.00

single room £171.00

Prices include:

- Return travel to Weymouth in coach with reclining seats.
- Return sea crossing to St. Peter Port by Sealink ferry.
- Return transfer to Green Acres Hotel.
- Afternoon tour of the island on Friday
- Courtesy service into St. Peter Port on Saturday, Sunday and Monday.
- 5 nights dinner, bed and breakfast at Green Acres Hotel, St. Martin's (AA 3-star, all rooms with private bathroom, telephone 0481 35711).
- Voucher for a presentation pack of a litre of whisky, gin or vodka and 2 litres of wine.
- Services of a tour escort.
- Comprehensive holiday insurance (see page 30).

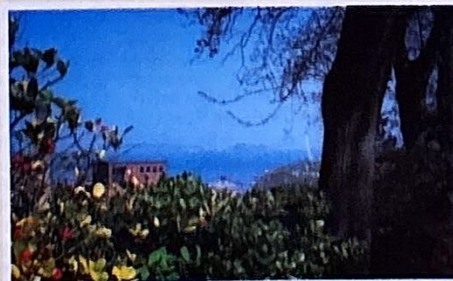
Thursday Stopping for coffee, we drive to Weymouth where you board the Sealink ferry for the lunchtime crossing to Guernsey. You may have to carry your own luggage on and off the ship on the outward and return journeys but we are hoping to arrange assistance. Numbered seats are reserved and meals and refreshments available. You arrive at St. Peter Port at approximately 1815 and are conveyed to Green Acres Hotel.

Friday to Monday On Friday afternoon, there will be a tour of the island. There will also be a courtesy service into St. Peter Port on

Saturday, Sunday and Monday, leaving in the morning and returning in the afternoon.

Tuesday After breakfast, you return to the terminal for the ferry back to Weymouth. You will be able to exchange your voucher for a presentation pack of a litre of whisky, gin or vodka and 2 litres of wine. There will be a tea stop on the return journey. Home approximately 1930.

Guernsey The picturesque island has tranquility and immense natural beauty. Many sandy beaches and beautiful secluded bays are dotted around the island's rugged coastline and in the Spring there is an abundance of flowers. St. Peter Port with its markets and shops clustered in narrow streets and arcades, is built on cliffs overlooking a colourful, lively



harbour. Boat trips operate regularly from St. Peter Port to the other Channel Islands and to France. You can purchase liquor, cigarettes, jewellery, perfume and photographic equipment at duty-free prices.

Green Acres Hotel Green Acres nestles in its own grounds on the edge of the town of St. Martin's in the midst of Guernsey's most beautiful parish. Ten minutes walk from the hotel is Fermain Bay, one of the island's loveliest bays. You can also walk to St. Peter Port and along the 'water lanes'. It is tempting to spend all day lazing by the pool or just ambling along the quiet country lanes that surround the hotel. There is a residents' lounge opening on to a sun terrace, a bar where you can meet the locals and a restaurant offering English and Continental dishes. All bedrooms have colour television and tea/coffee making facilities.

Thur 28 April

0705 Epsom
0715 Drift Bridge
0720 Banstead
0730 Wallington
0735 Carshalton
0745 Sutton
0755 North Cheam
0800 Worcester Park
0805 New Malden
0810 Tolworth
0815 Surbiton
0820 Kingston

Thur 20 October

0705 Raynes Park
0710 Wimbledon
0715 South Wimbledon
0720 Morden
0725 Rose Hill
0735 Sutton
0745 Cheam Village
0750 Ewell
0755 West Ewell
0800 Epsom
0810 Ashtead
0815 Leatherhead
0820 Great Bookham*

*opposite Beckley Parade only

Champagne Country

3 days £99.00

single room £112.00

Prices include:

- Travel in coach with reclining seats.
- Return ferry crossing to France.
- 2 nights dinner, bed and breakfast. Stopping in St. Quentin at the Grand Hotel (AA 2-star, all rooms with private facilities, telephone St. Quentin 626977) or Hotel de la Paix (AA 2-star, lift, all rooms with private facilities, telephone St. Quentin 627762).
- Comprehensive holiday insurance (see page 30).

Friday We drive to the port and board a ferry to France. The crossing lasts approximately 1¾ hours and there are facilities for snacks and meals. We continue via Montreuil and Hesdin to Arras for tea. Early evening, we arrive in St. Quentin and check in at the Grand Hotel or Hotel de la Paix. Both hotels are under the same management and within easy walking distance of the Grand Place which has a number of fine buildings including a late Gothic Town Hall with Carillon. Dinner will be served in the hotel or a local restaurant.

Saturday We drive across rich agricultural country to Reims for lunch and sightseeing. The historic city where the early kings of France were crowned, owes its fame to its Cathedral, one of the supreme achievements of Gothic architecture, and its Champagne. In



the afternoon, we drive along the 'Champagne Route' across undulating land where the vines grow. We wind our way along narrow country lanes to Epernay where we stop for a conducted tour of the world-famous Mercier Champagne cellar by electric train. After tasting the sparkling Champagne, we return to St. Quentin. In the evening, a gastronomic dinner will be served in the hotel or a nearby restaurant.

Sunday We go via Amiens along the Somme Valley to Abbeville stopping for coffee. The lunch stop is in Le Touquet, often described as the 'Gem of the Opal Coast'. Lying in woodland at the mouth of the River Canche, the fashionable resort has an attractive seafront promenade. We return to Boulogne where you will have time for tea and a little sightseeing before joining the early evening ferry back to England. Home approximately 2130.

Fri 7 October

- 0545 Great Bookham
- 0550 Fetcham
- 0555 Leatherhead
- 0600 Ashted
- 0610 Epsom
- 0615 West Ewell
- 0620 Ewell
- 0625 Cheam Village
- 0635 Sutton
- 0645 Carshalton
- 0650 Wallington
- 0700 Coulsdon

French Chateau Weekend

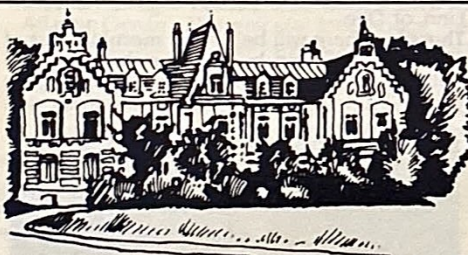
2 days £65.00

single room £71.00

Prices include:

- Travel in coach with reclining seats.
- Return ferry crossing to Boulogne.
- Gastronomic dinner, bed and breakfast at the Chateau Hotel 'Le Vert Mesnil', Tilques (AA 2-star, all rooms with private bathroom, telephone St. Omer 982899).
- Comprehensive holiday insurance (see page 30).

Saturday We drive to Dover and board the ferry to Boulogne. After a 1¾ hour crossing, we stop in the town of Boulogne for lunch and a little sightseeing. France's principal fishing port is bustling with activity all the year round. The delightful 'old town' is crowned by the Cathedral of Notre Dame and laced with narrow streets of charm and character, with lots of places to relax with a drink or meal.



Chateau Hotel 'Le Vert Mesnil'

Later, we visit a hypermarket where you can stock up with food and wine. Early evening, we arrive at the Chateau Hotel 'Le Vert Mesnil' which is in Tilques not far from St. Omer. The Chateau was built in the 19th century and is pleasantly situated in its own grounds. There are comfortable lounges and a residential bar. **Sunday** After a late start, we go via the Canche

Valley to Le Touquet for lunch and sightseeing. Le Touquet is one of the most fashionable resorts on the Opal Coast and came to the fore in the 19th century. It lies in woodland at the mouth of the River Canche and has an attractive seafront promenade. We leave Le Touquet and return to Boulogne for the afternoon ferry back to England. Home approximately 2000.

Sat 19 March

- 0535 Epsom
- 0545 Chessington North
- 0550 Hook
- 0600 Surbiton
- 0605 Kingston
- 0615 Raynes Park
- 0625 Morden
- 0630 Rose Hill
- 0640 Sutton
- 0650 Banstead

Sat 5 November

- 0545 Great Bookham
- 0550 Fetcham
- 0555 Leatherhead
- 0600 Ashted
- 0610 Epsom
- 0615 West Ewell
- 0620 Ewell
- 0625 Cheam Village
- 0635 Sutton
- 0645 Carshalton
- 0650 Wallington
- 0700 Coulsdon

Paris

3 days £89.00

single room £112.00

supplement per person for dinners in a local restaurant £13.50

Prices include:

- Travel in coach with reclining seats.
- Return ferry crossing to France.
- 2 nights bed and breakfast at Carlton's Hotel, Paris (French 'Direction du Tourisme' 3-star, lift, all rooms with private bathroom, telephone Paris 281 91 00).
- 3-hour conducted tour of Paris with an English-speaking guide.
- Comprehensive holiday insurance (see page 30).

Friday We drive to the port and board a ferry to France (lunch facilities on board). After a 1¾ hour crossing, we proceed to Paris stopping for tea. Early evening, we reach Carlton's Hotel which is in the Boulevard de Rochechouart near Montmartre and Sacré Coeur. Dinners in a local restaurant are offered at a supplementary charge. There are many good restaurants in the area and for variety, we recommend you only book bed and breakfast and make your own arrangements for dinners. **Saturday** After breakfast, there will be a 3-hour



River Seine, Paris

orientation tour of Paris with an English-speaking guide. You will see many famous landmarks including the Church of Notre Dame, Louvre, Eiffel Tower, Champs Elysées, and Arc de Triomphe. After lunch, you can stop in Paris or go on an excursion to Fontainebleau. The famous Palace of Fontainebleau (admission extra) is situated in the beautiful Forest of Fontainebleau. It was once the favourite meeting place of the Royal Hunt and has been enriched with paintings,

tapestries and furnishings by ten centuries of French kings. Later, there will be a short Illuminations Drive showing floodlit monuments and famous buildings; also streets full of life.

Sunday After breakfast, we are hoping to include a visit to Sacre Coeur which is situated above the Seine and commands a view of the whole of Paris. The huge church is built in Romanesque-Byzantine style in fulfilment of a vow taken by a group of Catholics after the Franco-Prussian War. Leaving Paris and stopping for refreshment, we arrive late afternoon at the port for the ferry back to England. Home approximately 2100.

Fri 8 April

Fri 19 August

Fri 28 October

- 0545 Great Bookham
- 0550 Fetcham
- 0555 Leatherhead
- 0600 Ashted
- 0610 Epsom
- 0615 West Ewell
- 0620 Ewell
- 0625 Cheam Village
- 0635 Sutton
- 0645 Carshalton
- 0650 Wallington
- 0700 Coulsdon

Fri 10 June

- 0535 Epsom
- 0545 Chessington North
- 0550 Hook
- 0600 Surbiton
- 0605 Kingston
- 0615 Raynes Park
- 0625 Morden
- 0630 Rose Hill
- 0640 Sutton
- 0650 Banstead

Paris including Chartres, Fontainebleau and Versailles

5 days £147.00

single room £189.50
supplement per person for dinners in a local restaurant £26.50

Prices include:

- Travel in coach with reclining seats.
- Return ferry crossing to France.
- 4 nights bed and breakfast at Carlton's Hotel, Paris (French 'Direction du Tourisme' 3-star, lift, all rooms with private bathroom, telephone Paris 281 91 00).
- 3-hour conducted tour of Paris with an English-speaking guide.
- Comprehensive holiday insurance (see page 30)

Monday We drive to the port and board a ferry to France (lunch facilities on board). After a 1¼ hour crossing, we proceed to Paris stopping for tea. Early evening, we reach Carlton's Hotel which is in the Boulevard de Rochechouart near Montmartre and Sacré Coeur. Dinners in a local restaurant are offered as a supplementary charge. There are many good restaurants in the area and for variety, we recommend you only book bed and breakfast and make your own arrangements for dinners.

Tuesday After a late start, we go on a short day excursion to Chartres, a medieval walled town with picturesque narrow streets and old houses. Chartres Cathedral is a masterpiece of Gothic architecture and one of the most famous cathedrals in the world. The building combines grandeur and elegance, and is quite without peer for its wealth of sculpture and abundance of stained glass.

Wednesday In the morning, there will be a 3-hour orientation tour of Paris with an English-speaking guide. You will see many famous landmarks including the Church of Notre Dame, Louvre, Eiffel Tower, Champs Elysées and Arc de Triomphe. After lunch, you can stop in Paris or go on an excursion to the Palace of Versailles (admission extra). The Palace was built for Louis XIV and is set in magnificent gardens with fountains, grottoes, ponds and statues. Versailles combines the



Palace of Versailles

classicism of the 17th century with the elegance and baroque style of the 18th century. The last of three famous kings to live at Versailles was the ill-fated Louis XVI who, with Queen Marie Antoinette, was overtaken by the great revolution.

Thursday The morning is free for shopping and sightseeing. You may like to go on a Bateaux Mouches excursion on the River Seine passing many famous bridges and unique views. In the afternoon, you can stop in Paris or go on an excursion to Fontainebleau and Barbizon. The famous Palace (admission extra) in the beautiful Forest of Fontainebleau, at one time the favourite meeting place of the Royal Hunt, has been enriched with paintings, tapestries and furnishings by ten centuries of French kings. Later, we visit the forest village of Barbizon, which gave its name to a school of French painting including Rousseau and Millet. After dinner, there will be a short Illuminations Drive showing you footlit monuments and famous buildings; also streets full of life.

Friday After breakfast, we are hoping to include a visit to Sacré Coeur which is situated above the Seine and commands a view of the whole of Paris. The huge church is built in Romanesque-Byzantine style in fulfilment of a vow taken by a group of Catholics after the Franco-Prussian War. Leaving Paris and stopping for refreshment, we arrive late afternoon at the port for the ferry back to England. Home approximately 2100.

Mon 9 May

Mon 11 July

0545	Great Bookham
0550	Fetcham
0555	Leatherhead
0600	Ashted
0610	Epsom
0615	West Ewell
0620	Ewell
0625	Cheam Village
0635	Sutton
0645	Carshalton
0650	Wallington
0700	Coulsdon

Mon 19 September

0535	Epsom
0545	Chessington North
0550	Hook
0600	Surbiton
0605	Kingston
0615	Raynes Park
0625	Morden
0630	Rose Hill
0640	Sutton
0650	Banstead

Normandy and the Loire Valley

5 days £181.00

single room £212.00

Prices include:

- Travel in coach with reclining seats.
- Return ferry crossing by Sealink ferry from Newhaven to Dieppe.
- Dinner, bed and breakfast on the first night at the Grand Hotel de Normandie, Lisieux (AA 3-star, lift, all rooms with private facilities, telephone Lisieux 621605).
- 2 nights dinner, bed and breakfast at the Hotel Meridien, Tours (AA 3-star, lift, all rooms with private bathroom, telephone Tours 280080).
- Bed and breakfast on the last night at the Hotel de Dieppe, Rouen (AA 3-star, lift, all rooms with private bathroom, telephone Rouen 719600). Dinner in the Pascaline Restaurant, Rouen.
- Comprehensive holiday insurance (see page 30).

Monday We drive to Newhaven and board the Sealink ferry for the 10.00 crossing to Dieppe (lunch facilities on board). Going via the Tancarville Bridge across the River Seine, we arrive for tea in Honfleur which has a distinctive and colourful character in the older parts of the town and harbour. Early evening, we reach Lisieux which is a place of pilgrimage as the early home of St. Teresa, 'The Little Flower'. The hotel is in the town centre near the Cathedral and places associated with St. Teresa.

Tuesday We stop for coffee in Alençon which has been a lace-making centre since the 17th century. The journey continues via Le Mans, famous for its 24-hour race, to Saumur for lunch. Saumur is beautifully situated on the

left bank of the Loire and is noted for its wine and the manufacture of rosaries and other devotional articles. Later, we drive along the banks of the Loire to the Chateau of Villandry noted for its tiered gardens, canals, fountains and pergolas (admission extra). Arriving early evening in Tours, we check in at the Hotel Meridien which is in the heart of Chateaux country. The hotel has a swimming pool and tennis court; also all bedrooms are fully air-conditioned and sound-proofed.

Wednesday After breakfast, you will have a little time to explore Tours, capital of Touraine and centre of an agricultural and wine-growing region. You can visit Tours Cathedral to see the magnificent stained glass windows; also walk through the 'Old Town' with its fine old mansions and picturesque half-timbered houses of different periods. Later, we go to a cellar in the Vouvray district where you can taste still and sparkling wine. The lunch stop is in Amboise, a charming old town dominated by a chateau which is one of the oldest and most beautiful royal residences in the Loire Valley. Our next visit is to Chenonceaux where you can see the famous chateau built over the River Cher. The chateau is approached by a fine avenue of plane trees, at the end of which a drawbridge leads on to a terrace in front of the entrance.

Thursday In the morning, we visit Chambord, the largest chateau in the Loire, standing on a river bank in a park of forest land and encircled by a wall. We stop for lunch in Blois whose pride and finest exhibit is the chateau. The tea stop is in Chartres where you will have a little time to visit the Cathedral which is a masterpiece of Gothic architecture. Early evening, we arrive in Rouen and check in at the Hotel de Dieppe which is independently



Chambord

owned and in the town centre. Dinner will be served in the Pascaline Restaurant (1900 style) which is near the Flower Market and Law Courts.

Friday The morning is free in Rouen which has so many links with the past that it is known as the 'Museum Town of France'. Rouen has many associations with Joan of Arc, also interesting medieval and Renaissance houses and one of the finest cathedrals in Europe. After lunch, we leave Rouen and return to Dieppe where you will be able to shop in a local supermarket before reporting for the late afternoon ferry back to England. Home approximately 2230.

Mon 26 September

0605	Great Bookham
0610	Fetcham
0615	Leatherhead
0620	Ashted
0630	Epsom
0635	West Ewell
0640	Ewell
0645	Cheam Village
0655	Sutton
0705	Carshalton
0710	Wallington
0720	Coulsdon

5 days £183.00

single room £210.50

Prices include:

- Travel in coach with reclining seats.
- Return ferry crossing to France.
- 4 nights dinner, bed and breakfast at Frantel Hotel, Rennes (AA 3-star, lift, all rooms with private bathroom, telephone Rennes 795454).
- Comprehensive holiday insurance (see page 30).

Monday We drive to Portsmouth and board the 0900 Townsend-Thoresen ferry for a 4-1/2 hour crossing to Cherbourg (lunch facilities on board). Arriving in Normandy, we stop for tea in Avranches before entering Brittany and arriving early evening in Rennes. Located in the city centre, the modern hotel is near the main attractions. All bedrooms have television and self-service mini-bar.

Tuesday The morning is free for shopping and sightseeing in Rennes. You can tour the Palais de Justice, inspect the renowned Du Guesclin residence or just lose yourself among the many quaint and picturesque 15th and 16th century districts around town. In the afternoon, there is an excursion to the famous old pirate town of St. Malo. The Breton port used to be on an island and preserves the



Mont St. Michel

character of a fortified coastal town of the Middle Ages. You can take a walk around the ramparts where there are magnificent views of the town, the mouth of the Rance, with Dinard on the opposite bank; the sea and offshore islands. Behind the walls, you can explore the shops and maybe buy some lace for which the Bretons are renowned.

Wednesday The morning is free in Rennes. In the afternoon, we visit Mont St. Michel which rises out of the sea off the coast of Normandy and is one of the most striking sights in France. Perched on its rocky islet and surrounded by walls and bastions, this old abbey has the appearance of a fortified castle. At low tide it is possible to walk round the island on foot, while at high tide the waves surge up the walls and may even wash over the car park at the foot of the hill.

Thursday We go on an excursion to Dinan and Dinard. The pretty town of Dinan lies high above the estuary of the River Rance. With its old town, castle and walls, Dinan has an attractive old-world air. Dinard is one of the most elegant Breton bathing resorts and attracts an international clientele.

Friday We leave Rennes and stop for coffee in Granville, a popular seaside resort with busy harbour. Granville's upper town is still surrounded by old walls and on the Point du Roc is a lighthouse. We continue via Coutances and Valognes to Cherbourg where you will have time for lunch and a little last-minute shopping before boarding the mid afternoon ferry to Southampton. Home approximately 2130.

Mon 4 July

0505	Raynes Park
0510	Wimbledon
0515	South Wimbledon
0520	Morden
0525	Rose Hill
0535	Sutton
0545	Cheam Villages
0550	Ewell
0555	West Ewell
0600	Epsom
0610	Ashted
0615	Leatherhead
0620	Great Bookham*

*opposite Beckley Parade only

The Dordogne

9 days £352.00

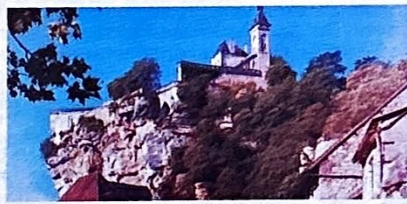
single room £418.00

Prices include:

- Travel in coach with reclining seats.
- Return ferry crossing to France.
- Dinner, bed and breakfast on the first night at Novotel Chartres (AA 3-star, lift, all rooms with private bathroom, telephone Chartres 218030).
- Dinner, bed and breakfast on the second night at the Hotel de France, Poitiers (AA 3-star, lift, all rooms with private facilities, telephone Poitiers 413201).
- 4 nights dinner, bed and breakfast at the Royal Vezere Hotel, Le Bugue (AA 3-star, lift, all rooms with private facilities, telephone Le Bugue 062001).
- Dinner, bed and breakfast on the seventh night at the Hotel Meridien, Tours (AA 3-star, lift, all rooms with private bathroom, telephone Tours 280080).
- Dinner, bed and breakfast on the last night at Holiday Inn, Paris-Roissy (lift, all rooms with private bathroom, telephone Roissy 988 00 22).
- Comprehensive holiday insurance (see page 30).

Saturday We drive to Newhaven and board the Sealink ferry for the 10.00 crossing to Dieppe (lunch facilities on board). Arriving in France, we drive direct to Novotel Chartres, stopping en route for tea. The modern hotel is just outside the city. There is a swimming pool and all bedrooms are large and well equipped.

Sunday After breakfast, we drive into the city centre where you will have time for a little sightseeing. Chartres is a medieval walled town with picturesque narrow streets and old houses. A masterpiece of Gothic architecture and one of the most famous cathedrals in the world, Chartres Cathedral combines grandeur and elegance, and is quite without peer for its wealth of sculpture and abundance of stained glass. We continue via Chateaudun and Vendome to Tours for lunch. Tours is on the River Loire and centre of an agricultural and wine-growing region. In the afternoon we visit Fontevault, one of the great curiosities of the Anjou, where the abbey church contains tombs of the Plantagenets. Late afternoon, we arrive in Poitiers which is strikingly situated on a rocky plateau above two river valleys. Poitiers is one of France's leading art cities, notable in particular for its early Romanesque churches. The Hotel de France is in pleasant surroundings in the heart of Poitiers. All bedrooms have television and refrigerated bars.



Rocamadour

Monday We drive to Cognac, the centre of a wine-growing area where cognac has been distilled since the 17th century. The chalky soil and climate provide the right conditions for the vines. After a visit to the Martell factory, you will have time for lunch and a little sightseeing. The picturesque old quarter of Cognac has a number of interesting houses and a Valois castle. We continue via Angouleme to Brantome for tea. Situated in the Dronne valley, Brantome has a beautiful situation and an old abbey which make it one of the most popular attractions in Perigord. We drive on to Le Bugue, arriving early evening at the Royal Vezere Hotel where we spend the next four nights. The modern hotel overlooks the Vezere river and is conveniently situated for touring the Dordogne. Facilities include a swimming pool, sauna, bridge club and riding school. Dinners will include four courses and a choice of menu.

Tuesday In the morning, we return to Perigueux for sightseeing and lunch. Chief town of the Dordogne, Perigueux is the main tourist centre of the Perigord, whose culinary specialities are exported all over the world. Perigueux is on the right bank of the River Isle and has preserved much of the atmosphere of the past. In the afternoon we visit Monbazillac for a chateau visit and winetasting before stopping in Cadouin for tea.

Wednesday In the morning, we visit Les Eyzies which lies in the centre of a group of important prehistoric sites. There will be time for coffee and a visit to some caves where prehistoric drawings of animals can be seen. We arrive at lunchtime in Sarlat where the rest of the afternoon will be free for sightseeing in one of the most attractive and best preserved towns in Perigord. A walk round the old town takes just over an hour and reveals many impressive aristocratic mansions and burghers' houses of the 14th and 17th centuries.

Thursday We drive along the dramatic Dordogne valley past chateaux. A stop will be

made for lunch and sightseeing in Rocamadour, built on a rock face in the gorge of the Alzon. The town is dominated by its 14th century castle, which is reached from the village by a steep flight of steps with the Stations of the Cross. Rocamadour is noted for its situation and its historic old buildings. Later, a stop is made in Collonges where the red stone buildings look their best on a wet day.

Friday Leaving Le Bugue, we stop for coffee in Angouleme where the Cathedral, like Poitiers and Perigueux, shows a mingling of Romanesque and Byzantine styles. From the old town walls and towers in Angouleme are beautiful views of the surrounding countryside. We return to Poitiers for lunch before arriving back in Tours where you will have a little time to explore the town before checking in at the Hotel Meridien. You can visit Tours Cathedral to see its magnificent stained glass windows; also walk through the 'Old Town' with its fine old mansions and picturesque half-timbered houses of different periods. The Meridien Hotel has a swimming pool and tennis court; also all bedrooms are fully air-conditioned and sound-proofed.

Saturday Stopping for coffee, we drive direct to Paris arriving at lunchtime. After a short orientation tour, the rest of the afternoon will be free for shopping and a little sightseeing on foot. The historic, bustling and elegant city - acknowledged for centuries as the cultural centre of Europe - offers so much for the discerning visitor. Early evening, we check in at Holiday Inn Roissy which is about 13 miles from the centre of Paris.

Sunday Making a stop for coffee, we go via Beauvais and Abbeville to Le Touquet for lunch. Often described as the 'Gem of the Opal Coast', the fashionable resort lies in woodland at the mouth of the River Canches. Next we drive to Boulogne where you will have time for tea and a little sightseeing before joining the early evening ferry back to England. Home approximately 2200.

Sat 28 May

0605	Great Bookham
0610	Fetcham
0615	Leatherhead
0620	Ashted
0630	Epsom
0635	West Ewell
0640	Ewell
0645	Cheam Village
0655	Sutton
0705	Carshalton
0710	Wallington
0720	Coulsdon

Dutch Bulbfields

3 days £103.00

single room £119.50

Prices include:

- Travel in coach with reclining seats.
- Return ferry crossing to Belgium.
- 2 nights dinner, bed and breakfast at the Hilton Hotel, Rotterdam (lift, all rooms with private bathroom, telephone Rotterdam 144044).
- Admission to Keukenhof Gardens.
- Comprehensive holiday insurance (see page 30).

Friday We drive to Dover and board a ferry to Belgium (lunch facilities on board). Crossing the border from Belgium into Holland, we arrive in Rotterdam and check in at the Hilton Hotel which is in a superb setting facing the fountains in Hofplein Square. All bedrooms have colour television and are air-conditioned. On one night there will be self-service buffet dinner and on the other a served 'table d'hote' dinner. American breakfasts will be provided in the mornings.

Saturday We drive to Amsterdam for coffee, sightseeing and an early lunch. Amsterdam is one of the most fascinating cities in the world with hundreds of canals and almost a thousand bridges. You will have time for a little shopping or a canal trip. Later, we drive along the 'Tulip Route' before stopping at the Keukenhof Gardens to see one of the greatest flower shows in the world. In a 70-acre park are millions of bulb flowers, centuries-old trees, a heather garden, flowering shrubbery, beautiful cascades and ponds, greenhouses



and a roofed-in garden, restaurants and sunny terraces, and exhibitions and demonstrations in the 'Queen Juliana' pavilion.

Sunday We take the North Sea coastal route and stopping for coffee, arrive in the Belgian town of Bruges for lunch. The beautiful medieval city is often referred to as 'Venice of the North'. There are picturesque canals and quaint little bridges and you can usually go sightseeing by boat or horse-drawn cab. Later, we arrive at the port and board the ferry back to Dover. Home approximately 2230.

Fri 8 April

Fri 6 May

0545 Great Bookham
0550 Fetcham
0555 Leatherhead
0600 Ashtead
0610 Epsom
0615 West Ewell
0620 Ewell
0625 Cheam Village
0635 Sutton
0645 Carshalton
0650 Wallington
0700 Coulsdon

Fri 22 April

0535 Epsom
0545 Chessington North
0550 Hook
0600 Surbiton
0605 Kingston
0615 Raynes Park
0625 Morden
0630 Rose Hill
0640 Sutton
0650 Banstead

Holland in Springtime

4 days £141.00

single room £165.00

Prices include:

- Travel in coach with reclining seats.
- Return cross-channel ferry crossing.
- 3 nights dinner, bed and breakfast at the Hilton Hotel, Rotterdam (lift, all rooms with private bathroom, telephone Rotterdam 144044).
- Admission to the Keukenhof Gardens.
- Comprehensive holiday insurance (see page 30).

Friday We drive to Dover and board a ferry to Belgium (lunch facilities on board). Crossing the border from Belgium into Holland, we arrive in Rotterdam and check in at the Hilton Hotel which is in a superb setting facing the

fountains in Hofplein Square. All bedrooms have colour television and are air-conditioned. On one night there will be a self-service buffet dinner and on the other two nights a table d'hote dinner served at your table. Full cooked breakfasts will be served in the mornings.

Saturday In the morning, we visit Delft, a picture-book city of tree-lined canals, white bridges and lovely buildings. Our next stop is in The Hague where you will have time for lunch and sightseeing. Seat of government of the Netherlands, The Hague is 2½ miles from the North Sea and linked by canal with Rotterdam and Amsterdam. The Hague is richest of all Dutch cities and has many fine buildings including three royal palaces, the Hall of Knights and Peace Palace. We return to Rotterdam where you will have the remainder of the afternoon for shopping and sightseeing.

Rotterdam is Holland's second city and one of Europe's most important ports. Almost completely destroyed during the last World War, it has been rebuilt in impressive fashion with futuristic buildings and pedestrian-zoned malls. You can take a 'Spido' boat trip round the harbour; a 1¼ hour tour of the port area leaving every 45 minutes. After dinner, there will be a short excursion to the Euromast observaton tower (admission extra) which is 600 feet high and overlooks the seaport and modern city.

Sunday We drive to Amsterdam for coffee, sightseeing and an early lunch. Amsterdam is one of the most fascinating cities in the world with hundreds of canals and almost a thousand bridges. You will have time for a little shopping and canal trip. Later, we drive along the 'Tulip Route' before stopping at the Keukenhof Gardens to see one of the greatest flower shows in the world. In a 70-acre park are millions of bulb flowers, centuries-old trees, a heather garden, flowering shrubbery, beautiful cascades and ponds, greenhouses and a roofed-in garden, restaurants and sunny terraces, and exhibitions and demonstrations in the 'Queen Juliana' pavilion.

Monday Stopping for coffee, we arrive for lunch in the Belgian city of Ghent which in the 16th century was the second most powerful city next to Paris. Often known as the 'City of Flowers', Ghent was the birthplace of John of Gaunt. The city is rich in art treasures and has a fine cathedral; also rivers crossed by picturesque stone bridges. In the afternoon, we continue through Belgium across the border into France, arriving in Calais for the short crossing back to England. Home approximately 2230.

Fri 15 April

Fri 29 April

0545 Great Bookham
0550 Fetcham
0555 Leatherhead
0600 Ashtead
0610 Epsom
0615 West Ewell
0620 Ewell
0625 Cheam Village
0635 Sutton
0645 Carshalton
0650 Wallington
0700 Coulsdon



HOLLAND AND GERMANY

Holland

5 days £184.00

single room £206.50

Prices include:

- Travel in coach with reclining seats.
- Return ferry crossing to Belgium.
- 4 nights dinner, bed and breakfast at the Hotel Noordzee, Noordwijk-on Sea (AA 4-star, lift, all rooms with private bathroom, telephone Noordwijk 1919205).
- Admission to Madurodam Model Village.
- Comprehensive holiday insurance (see page 30).

Monday We drive to Dover and board the ferry to Belgium (lunch facilities on board). Crossing the border from Belgium into Holland, we drive direct to Noordwijk-on-Sea, arriving at the Hotel Noordzee in time for a late dinner. The hotel is in a fine position on the main boulevard opposite the superb beach. Facilities include an indoor swimming pool, sauna and solarium.

Tuesday We visit Delft, a picture-book city of tree-lined canals, white bridges and lovely buildings. In the 17th century, some 30 different potteries produced Delft china with its distinctive hand-painted blue designs on eggshell-white china. Now, only the Royal Factory at Delft survives and you can find mass-produced Delft giftware (much of which is made in Gouda) everywhere throughout Holland, but a lesser number of genuine Delft items. Our next stop is in The Hague where you will have time for lunch and a little sightseeing. Seat of government of the Netherlands, The Hague is 2½ miles from the North Sea and linked by canal with Rotterdam and Amsterdam. Richest of all Dutch cities, The Hague has many fine buildings including three royal palaces, the Hall of Nights and



Cheese Market

Peace Palace. Later, we visit Madurodam, a miniature replica of a typical Dutch town with all its charm and bustle. You will see medieval streets and modern architecture, historic buildings and traditional ceremonies.

Wednesday In the morning, we visit Edam which is famous for its red-skinned, round cheeses made from lightly skimmed milk. Next we go to Marken, a fishing village famous for its costumes. Marken is reached by driving along a causeway connecting the island with the mainland. The inhabitants of Marken wear traditional Dutch costume and you can visit the spotless tiled show houses which display clocks and fine porcelain. Later, we arrive in Amsterdam, one of the most fascinating cities in the world. There are hundreds of canals and almost a thousand bridges. You will have time for a canal trip and a little sightseeing; also lunch and tea.

Thursday In the morning, we visit Aalsmeer which is situated on the Westeinder Lakes and is renowned for its bulb fields. It is Holland's biggest flower centre, housing Europe's most important flower auction hall. Flower buyers come early on weekdays and bid by pressing electric buttons. Bidding continues until all the flowers have been sold (around 1130). Thousands of blooms arrive at the auction halls on long, flat, floating punts. We return to Noordwijk where you will have the rest of the day free for shopping and sightseeing. Noordwijk is one of Holland's most cosmopolitan seaside resorts. Its main street runs right along the seafront with a sandy beach on one side and a string of hotels on the other. Noordwijk has all the amenities of a popular resort including smart shops and pleasant cafes. The resort's modern arcaded square with fountains, seats and shops is overlooked by a white lighthouse.

Friday We stop for coffee in Rotterdam at the Euromast observation tower which has a spectacular view across the seaport and modern city. Later, we stop at Middleburg, an attractive and traditional Dutch town with many fine buildings. Breaking for lunch, we arrive at the port for the ferry back to England. Home approximately 2030.

Mon 5 September

0545	Great Bookham
0550	Fetcham
0555	Leatherhead
0600	Ashted
0610	Epsom
0615	West Ewell
0620	Ewell
0625	Cheam Village
0635	Sutton
0645	Carshalton
0650	Wallington
0700	Coulsdon

Rhine and Moselle Valleys

5 days £175.00

single room £198.00

Prices include:

- Travel in coach with reclining seats.
- Return ferry crossing to Belgium.
- Bed and breakfast on the first night at the Holiday Inn, Liege (AA 4-star, lift, all rooms with private bathroom, telephone Liege 426020). Dinner in a local restaurant.
- 2 nights dinner, bed and breakfast at the Hotel Jagdschloss Niederwald, Rudesheim (AA 3-star, all rooms with private facilities, telephone Rudesheim 1004). Some rooms are in the hotel annexe.
- Dinner, bed and breakfast on the last night at the Holiday Inn, Bruges (AA 4-star, lift, all rooms with private bathroom, telephone Bruges 335341).
- Comprehensive holiday insurance (see page 30).

Monday We drive to Belgium and board the ferry to Belgium (lunch facilities on board). Next we go to Liege stopping for refreshment. Liege is rich in history and has many interesting old buildings. The Holiday Inn is pleasantly situated by the river not far from the city centre. Dinner will be served in a nearby restaurant - probably the Congress Hall next to the hotel.

Tuesday Crossing the border into Germany near Aachen, we stop for lunch in Cologne near the famous Gothic cathedral. After lunch, we cross the Rhine near Bonn and follow the east bank past 'Fairy Tale' castles. A short stop will be made in a vineyard for tasting and an opportunity to purchase wine. The tea stop is in Koblenz which was founded over 2000 years ago by the Romans, at the confluence of the Rhine and Moselle valleys. We continue along the Rhine Valley and arrive early evening at the Hotel Jagdschloss Niederwald which is surrounded by a forest above the town of Rudesheim. Facilities include an indoor swimming pool with sauna and solarium.

Wednesday After breakfast, you will have a little time to explore the immediate area which

is quiet and surrounded by a nature reserve. A chair lift provides a direct connection to Assmannshausen and there is a gondola lift to Rudesheim. Later, we drive into the town of Rudesheim for lunch and sightseeing. At the heart of the Rhine wine country, Rudesheim is one of the most attractive old Rhineland towns. It has quaintly-gabled and turreted half-timbered houses and crooked streets and lanes. In the afternoon, you will have an opportunity to go on a Rhine cruise before returning to the hotel for an evening meal. After dinner, you can return to Rudesheim to watch the illuminated barges floating down the Rhine and enjoy the lively night life, perhaps singing and dancing with local people in a wine cellar.

Thursday We re-trace the journey through wine-growing country to Koblenz, then follow the Moselle Valley to the picturesque little town of Cochem for coffee. Returning to Belgium, we stop for a late lunch in Monschau, a pretty little village in the Eiffel Mountains, with a stream running down the

main street. Making a further stop for tea, we arrive early evening in Bruges. The Holiday Inn is in the town centre and equipped with a swimming pool, sauna and solarium.

Friday We do not leave until after lunch allowing the morning for sightseeing and shopping. Bruges is a beautiful medieval city with picturesque canals and quaint little bridges. You can go sightseeing by boat or horse-drawn cab; also watch lace being made. We drive to the port and report for the mid-afternoon ferry back to England. Home approximately 2030.

Mon 27 June

0545	Great Bookham
0550	Fetcham
0555	Leatherhead
0600	Ashted
0610	Epsom
0615	West Ewell
0620	Ewell
0625	Cheam Village
0635	Sutton
0645	Carshalton
0650	Wallington
0700	Coulsdon

Mon 10 October

0535	Epsom
0545	Chessington North
0550	Hook
0600	Surbiton
0605	Kingston
0615	Raynes Park
0625	Morden
0630	Rose Hill
0640	Sutton
0650	Banstead



Moselle Valley

Home of Hans Andersen

5 days £149.00

single room in Odense £12.00
 supplement per person for a berth in a 2-berth cabin £10.00

Prices include:

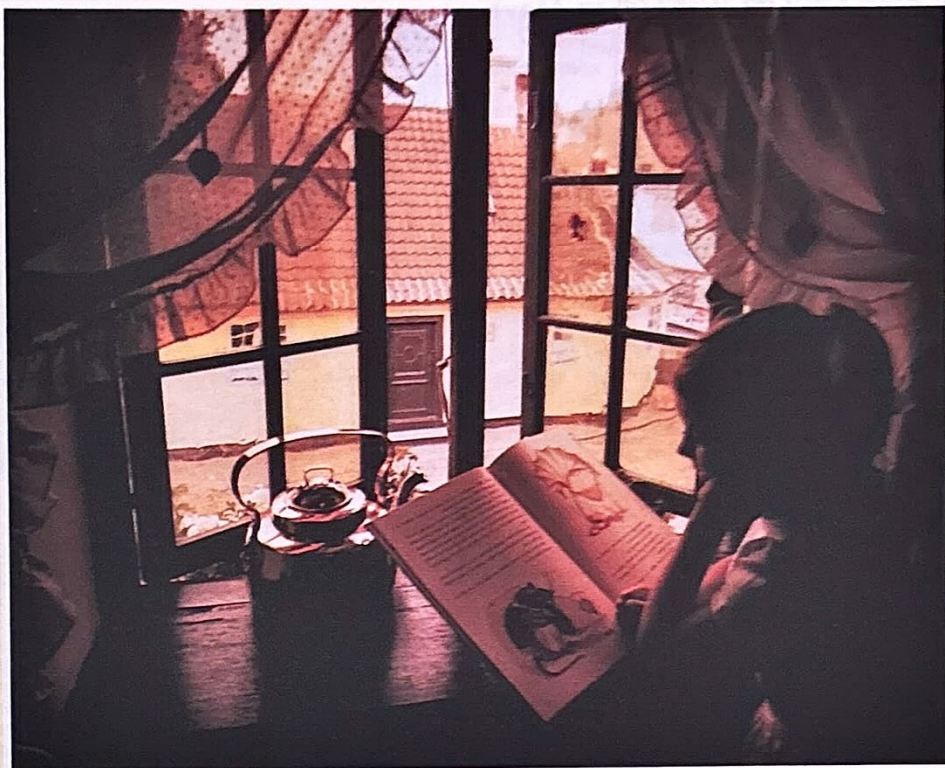
- Travel in coach with reclining seats.
- Sea travel to Esbjerg and return with a berth in a 4-berth cabin (all cabins have shower and toilet).
- Dinner and breakfast in the restaurant of the ship on the outward and return crossings.
- 2 nights dinner, bed and breakfast at the Hotel Windsor, Odense (all rooms with private facilities).
- Admission to Legø Land.
- Comprehensive holiday insurance (see page 30).

Tuesday Stopping for coffee, we arrive in the old Roman city of Colchester for lunch. Later, we make our way to Harwich and board the Danish Seaways ship to Esbjerg. Please use a small overnight bag when on board ship.

Wednesday Soon after midday, we arrive in Esbjerg, a lively town on Denmark's west coast. In the afternoon, we visit Legoland created by the makers of Lego toys and enthralling to adults and children alike. Later, we follow a picturesque route to Odense. Situated near the town centre, the Hotel Windsor has been extensively and imaginatively modernised.

Thursday You have the morning free in Odense for shopping and sightseeing. The largest city on Funen Island is one of Scandinavia's oldest towns and was an important religious centre in the Middle Ages. You can visit Hans Christian Andersen's House, a museum exhibiting his books, letters, drawings and personal belongings. Also in Odense is Hans Andersen's Childhood Home, the little house where he lived with his parents from the age of 2 to 14, with mementoes of his childhood. There are many other fascinating attractions in Odense including St. Knud's Cathedral which was built in the 13th century. In the afternoon, we go on a short sightseeing tour of south Funen visiting the lovely area of Svendborg; also the gardens and Transport Museum at Egeskov Castle (admission extra).

Friday In the morning, we hope to include a visit to a Viking ship. Later, we stop in Ribe for lunch and a little sightseeing. Ribe was once



Hans Andersen's House

the capital of Denmark and is now a small and charming little town with a 12th century cathedral and quaint old buildings and streets. The town used to be famous for its storks which nested on the roofs of the old houses. Late afternoon, we arrive back in Esbjerg and report for the homeward crossing.

Saturday Late morning, we arrive back at Harwich and stop for lunch in Colchester. Home approximately 1730.

Danish Seaways' Ships Amenities on board include a restaurant; cafeteria; lounge, where a live group plays for dancing in the evening; discotheque, open until the small hours; well-stocked bars; shops with goods at

shipboard prices; and children's play area. There is plenty of room; also each ship is air-conditioned and stabilised.

Tues 24 May

0835 Great Bookham
 0840 Fetcham
 0845 Leatherhead
 0850 Ashtead
 0900 Epsom
 0905 West Ewell
 0910 Ewell
 0915 Cheam Village
 0925 Sutton
 0935 Carshalton
 0940 Wallington
 0950 Coulsdon

Tues 13 September

0825 Epsom
 0835 Chessington North
 0840 Hook
 0850 Surbiton
 0855 Kingston
 0905 Raynes Park
 0915 Morden
 0920 Rose Hill
 0930 Sutton
 0940 Banstead

Norway

7 days £299.00

single room supplement (4 nights) £28.00
 supplement per person for a berth in a 2-berth cabin £22.00

Price includes:

- Travel in coach with reclining seats.
- Sea travel to Gothenburg and return with a berth in a 4-berth cabin (all cabins have shower and toilet).
- Danish cold table dinner and breakfast on the outward and return crossings.
- Dinner, bed and breakfast on Tuesday night at the Hotel Opalen, Gothenburg (lift, all rooms with private bathroom).
- Dinner, bed and breakfast on Wednesday night at the Hotel Klaekken, near Honefoss (AA 3-star, lift, all rooms with private bathroom, telephone Honefoss 32200).
- Dinner, bed and breakfast on Thursday night at the Kinsarvik Fjord Hotel (AA 3-star, lift, all rooms with private bathroom, telephone Kinsarvik 63100).
- Dinner, bed and breakfast on Friday night at the Forbund Hotel, Oslo (AA 2-star; temperance, lift, all rooms with private bathroom, telephone Oslo 208855).
- Services of a courier.
- Comprehensive holiday insurance (see page 30).

Monday Stopping for tea, we arrive early evening in Felixstowe and board the DFDS Tor Britannia/Tor Scandinavia ship to Gothenburg. Please use a small overnight bag when on board.



Hardanger towards Kinsarvik

Tuesday We arrive in Gothenburg and drive to the Hotel Opalen in the heart of the city.

Wednesday Stopping for coffee, lunch and tea, we arrive late afternoon at the Klaekken Hotel which is just over 3 miles from Honefoss. The hotel is in the country and surrounded by pleasant gardens.

Thursday Making stops for coffee, lunch and tea, we arrive late afternoon at the Kinsarvik Fjord Hotel which is in an idyllic village on Hardanger Fjord. Nearby in the pine-clad Husdal valley, the River Kinso forms some splendid waterfalls. The pleasant hotel has a large sun terrace and garden.

Friday We return along the southern route via Odda and Notodden to Kongsberg, an old silver-mining town. Late afternoon, we arrive in Oslo for a short orientation tour. The small but spacious capital is rich in interests and reflects Norway's great sea-faring traditions. Early evening, we check in at the Forbund Hotel which is in the heart of the city.

Saturday We leave Oslo and stopping for coffee and lunch return to Gothenburg for the 1630 sailing to Felixstowe.

Sunday We arrive in Felixstowe at 1430/1630 and commence the homeward journey, stopping for refreshment. Home approximately 1830/2030.

DFDS Tor Britannia/Tor Scandinavia The ships are among the most spacious and luxurious ferries on the North Sea. Facilities include cheerfully decorated lounges and bars, cinema with top films, sundecks, heated swimming pool, dancing in the main lounge, night club discotheque, casino, gift shops including a supermarket and a playship for children.

Mon 13 June

1405 Great Bookham
 1410 Fetcham
 1415 Leatherhead
 1420 Ashtead
 1430 Epsom
 1435 West Ewell
 1440 Ewell
 1445 Cheam Village
 1455 Sutton
 1505 Carshalton
 1510 Wallington
 1520 Coulsdon

Swiss Lakes and Mountains

8 days £252.00 (£242.00 in May)

single room £275.50 (£267.50 in May)
 supplement per person for twin room with private facilities in Lucerne £13.00
 supplement for single room with private facilities in Lucerne £18.00

Prices include:

- Travel in coach with reclining seats.
- Return cross-channel ferry crossing.
- Dinner, bed and breakfast on the first night at Novotel Reims (AA 3-star, lift, all rooms with private bathroom, telephone Reims 081161).
- 5 nights dinner, bed and breakfast at the Hotel Johanniter, Lucerne (lift, telephone Lucerne 231855).
- Dinner, bed and breakfast on the last night at the Holiday Inn, near Luxembourg City (AA 4-star, lift, all rooms with private bathroom, telephone Luxembourg 435051).
- Comprehensive holiday insurance (see page 30).

Saturday We drive to Dover and board a ferry to France (lunch facilities on board). Stopping en route for tea, we arrive at Novotel Reims which is 3 miles from the city centre. There is a swimming pool and all bedrooms are large and well equipped.

Sunday We drive to Lucerne, stopping for coffee, lunch and tea. The Hotel Johanniter is centrally situated in the town only a few minutes walk from Lake Lucerne. It offers traditional Swiss hospitality and is under the personal supervision of the resident proprietors.

Monday to Thursday During our stay in Lucerne, there will be a day at leisure and three excursions. One day, we will visit Interlaken, the main town of Bernese Oberland, superbly situated between two lakes. After lunch, you can stay in Interlaken or go to view the magnificent snow-capped heights of the Jungfrau by cable car (extra charge). On another day, there will be a spectacular trip through the Alps visiting the St. Gotthard Pass which rises nearly 7,000 feet before descending steeply, before it winds its way down to Ticino. The third excursion, is in the afternoon, along the western shores of Lake Lucerne up the beautiful Alpine Valley to



Engelberg

the village of Engelberg set beneath the great peak of Mount Titlis. You can either visit the Benedictine monastery in Engelberg or take a trip by funicular or cable car (extra charge).

Friday We leave Lucerne and drive to Luxembourg, stopping for coffee, lunch and tea. Situated in the heart of the European Centre in Kirchberg, the Holiday Inn is not far from the centre of Luxembourg City. Facilities include an indoor swimming pool, sauna and solarium. All bedrooms have colour television and air-conditioning. Time permitting, we hope to include a visit to the city centre so you can see the many magnificent buildings including the Grand Ducal Palace and Cathedral of Notre Dame.

Saturday We go via Bastogne to Brussels for lunch, setting down near the Grand Place. The Belgian capital has many interesting old buildings and is administrative centre of the Common Market. We drive to the port and board the late afternoon ferry back to England. Home approximately 2230.

Lucerne The town is magnificently situated at the northern end of Lake Lucerne. In the Old

Quarter are the seven towers on the old walls and the Lion Monument. Two ancient bridges still span the River Reuss. Lucerne has many fine shops with a wide range of Swiss and foreign goods. There are many interesting museums including the largest transport museum in Europe and the Richard Wagner Museum. You can visit the lively cafes and cinemas, also go on a steamer excursion on Lake Lucerne. Above the town is Mount Pilatus which you can ascend by aerial cableway or electric railway.

Sat 21 May

Sat 10 September

0545 Great Bookham
 0550 Fetcham
 0555 Leatherhead
 0600 Ashted
 0610 Epsom
 0615 West Ewell
 0620 Ewell
 0625 Cheam Village
 0635 Sutton
 0645 Carshalton
 0650 Wallington
 0700 Coulsdon

Sat 16 July

0535 Epsom
 0545 Chessington North
 0550 Hook
 0600 Surbiton
 0605 Kingston
 0615 Raynes Park
 0625 Morden
 0630 Rose Hill
 0640 Sutton
 0650 Banstead



Lucerne

Austrian Tyrol

10 days £349.00

single room £389.00

Prices include:

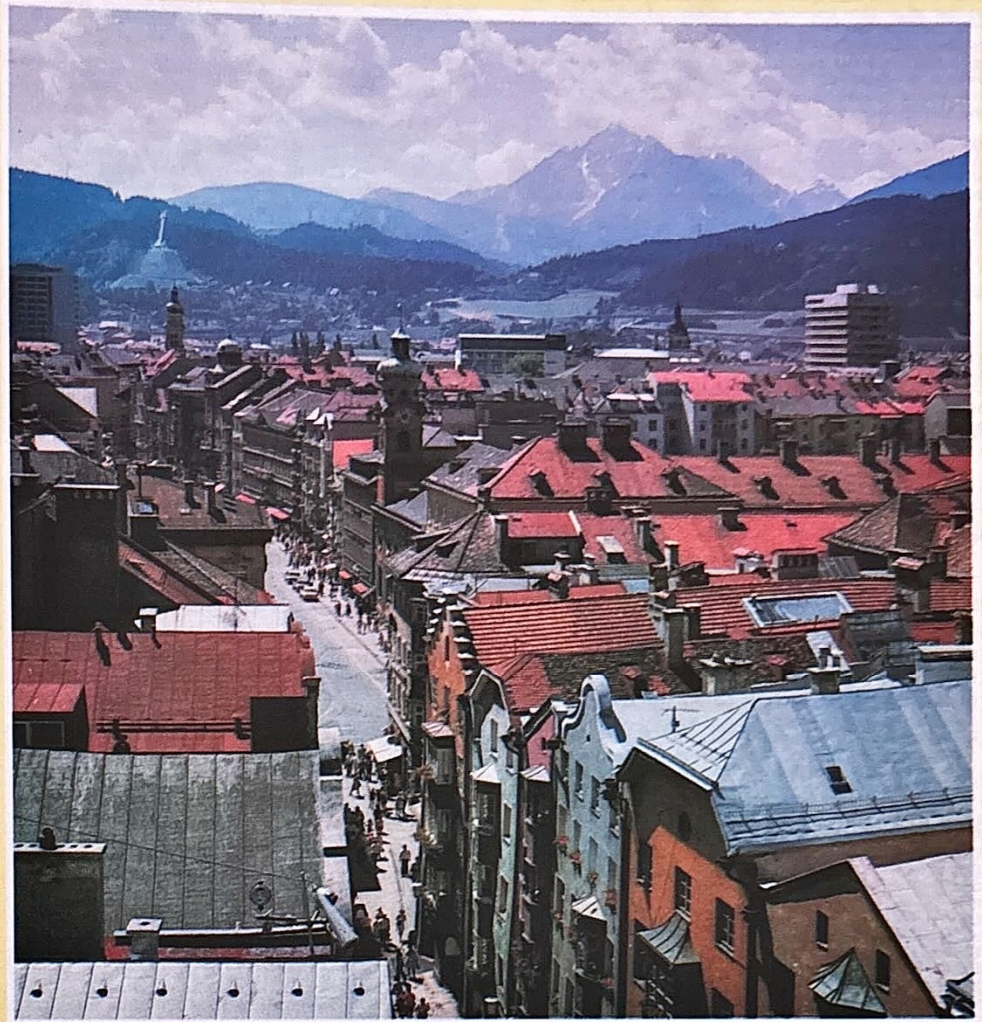
- Travel in coach with reclining seats.
- Return ferry crossing from Dover to Belgium.
- Bed and breakfast on the first night at the Holiday Inn, Liege (AA 4-star, lift, all rooms with private bathroom, telephone Liege 426020). Dinner in a local restaurant.
- Dinner, bed and breakfast on the second night at the Hotel Jagdschloss Niederwald, Rudesheim (AA 3-star, all rooms with private facilities, telephone Rudesheim 1004). Some rooms are in the hotel annexe.
- 5 nights dinner, bed and breakfast at the Hotel Grauer Bar, Innsbruck (AA 2-star, lift, all rooms with private facilities, telephone Innsbruck 34531).
- Bed and breakfast on the eighth night at the Alt Heidelberg Hotel, Heidelberg (AA 3-star, lift, all rooms with private facilities, telephone Heidelberg 25575). Dinner at the Romantik-Hotel Zum Ritter St. Georg, Heidelberg.
- Dinner, bed and breakfast on the last night at the Bedford Hotel, Brussels (AA 3-star, lift, all rooms with private bathroom, telephone Brussels 512 78 40).
- Comprehensive holiday insurance (see page 30).

Friday We drive to Dover and board the ferry to Belgium (lunch facilities on board). Next we go to Liege stopping for refreshment. Liege is rich in history and has many interesting old buildings. The Holiday Inn is pleasantly situated by the river not far from the city centre. Dinner will be served in a nearby restaurant – probably the Congress Hall next to the hotel.

Saturday Crossing the border into Germany near Aachen, we drive along the Rhine Valley past 'Fairy Tale' castles to Koblenz for lunch. Koblenz was founded over 2000 years ago by the Romans at the confluence of the Rhine and Moselle Valleys. In the afternoon, you can go on a short Rhine cruise or visit the town of Rudesheim which is at the heart of the wine country and one of the most attractive old Rhineland towns. Rudesheim has quaintly-gabled and turreted half-timbered houses and crooked streets and lanes. Early evening we arrive at the Hotel Jagdschloss Niederwald which is surrounded by a forest above the town of Rudesheim.

Sunday We drive to Innsbruck, stopping for coffee, lunch and tea. Early evening, we check in at the Hotel Grauer Bar which is in the centre of the town near the historic buildings and most interesting sites. The hotel is tastefully decorated with every modern comfort and has a romantic Tyrolese bar.

Monday to Thursday During our stay in Innsbruck, there will be a day at leisure and three excursions. One excursion is to Salzburg which in its picturesque mountain setting is one of the most beautiful cities in Austria. Salzburg is the birthplace of Mozart and music is still an important part of life in the city today. The old town is almost completely medieval



Innsbruck

and dominated by the magnificent 12th century fortress that towers high above the banks of the Salzach river. Our second excursion is via the Brenner Pass to Italy stopping in the picturesque village of Vipiteno. The last excursion is to the 'Fairy Tale' castle of Neuschwanstein in Bavaria, with a visit to the Passion Play village of Oberammergau. Neuschwanstein Castle is perched 600 feet above the valley on the precipitous Tegel rock. It has fantastically-shaped turrets, towers, pinnacles and gables. On one side of the Castle are steep cliffs and on the other swan country with jewelled lakes. Admission to Neuschwanstein Castle is extra and you can tour the rooms in about an hour. Oberammergau has become world famous for its Passion Play, given every 10 years. The Play was first given in 1634 when villagers vowed that if they were saved from the Black Death, they would perform a play every decade depicting the suffering and death of Jesus. As a village Oberammergau is worth seeing and its attractive houses are often decorated with 18th century fresco paintings. It is also a village of woodcarvers who export their products all over the world. Also during our visit to Innsbruck, we are hoping to arrange a Tyrolese evening with entertainment (extra charge).

Friday We leave Innsbruck and stopping for coffee, lunch and tea, arrive early evening at the Alt Heidelberg Hotel in the old University town of Heidelberg, the gateway of the beautiful Neckar Valley. Dinner will be served in the Romantik-Hotel Zum Ritter St. Georg and later you will be able to visit one of the historic students' taverns.

Saturday Leaving Heidelberg, we stop for coffee and arrive in Trier for lunch and a little sightseeing. Trier is Germany's oldest city and one of the most interesting with numerous

Roman remains and monuments and a Romanesque cathedral. Stopping for tea, we arrive early evening in Brussels at the Bedford Hotel which is in the centre of the city near the Grand Place.

Sunday Most of the morning will be free for further sightseeing in Brussels which is the capital of Belgium and administrative centre of the Common Market. On Sunday mornings there is a flower market in the Grand Place. We stop for lunch in Bruges, a beautiful medieval city with picturesque canals and quaint little bridges. You can usually watch lace being made or go sightseeing by boat or horse-drawn cab. We return to the port for the later afternoon ferry back to England. Home approximately 2200.

Innsbruck Innsbruck is situated in the Valley of the River Inn and surrounded by meadowland, woods and glorious mountain peaks. Every street seems to end with a view of the mountains and of particular interest is the old part of the town 'the Altstadt'. Narrow house-fronts with beautiful doorways and oriels still displaying the old Tyrolese-style of building and arcaded shops with fine Renaissance Baroque and Rococo edifices show the influence developed from the south.



Grand Place, Brussels

Fri 17 June

0545	Great Bookham
0550	Fetcham
0555	Leatherhead
0600	Ashted
0610	Epsom
0615	West Ewell
0620	Ewell
0625	Cheam Village
0635	Sutton
0645	Carshalton
0650	Wallington
0700	Coulsdon

Fri 12 August

0535	Epsom
0545	Chessington North
0550	Hook
0600	Surbiton
0605	Kingston
0615	Raynes Park
0625	Morden
0630	Rose Hill
0640	Sutton
0650	Banstead

Comprehensive Holiday Insurance

We have arranged a comprehensive holiday insurance scheme through Kersley, Procter and Day Limited and a consortium of leading European Insurance Companies so that all persons travelling on holidays advertised in this brochure are automatically covered under the Master Policy held by us. The Master Policy is available for inspection at our offices or on receipt of a stamped addressed envelope. In the event of a dispute concerning this insurance, the terms and conditions of the Master Policy alone shall prevail.

HEALTH PROVISIONS

Whilst this insurance is not subject to a health warranty all claims are excluded where at the time of taking out this insurance the person whose condition gives rise to a claim is either:-

- receiving or on a waiting list for in-patient treatment in a hospital or nursing home; or
- expected to give birth before or within 2 months following the date of arriving home; or
- travelling against the advice of a Medical Practitioner or for the purpose of obtaining Medical treatment abroad.

COVERAGE

Section 1 - PERSONAL ACCIDENT

In the event of Accidental Bodily Injury being sustained by the Insured Person during the Period of Insurance benefit will be paid as follows for the following:

- Death by Accident £5,000
- Loss of One or More Limbs or One or Both Eyes £5,000
- Permanent Total Disablement from following any occupation £5,000

PROVISIONS

- In respect of an Insured Person under the age of 16 years at the time of injury the death benefit under (1) above will be limited to £250.
- No benefits will be payable:-
 - Under (1) or (2) unless such death or loss occurs within twelve months of the date of injury.
 - Under (3) except on proof to the Insurer that the disablement has continued for twelve months from the date of injury and in all probability will continue for the remainder of the Insured Person's life.
- The maximum amount of all benefits payable for one or more injuries sustained by an Insured Person during the Period of Insurance shall not exceed £5,000.

DEFINITIONS

INJURY means bodily injury caused solely and directly through accidental external violent and visible means. **LOSS OF A LIMB** means loss by physical severance of a hand at or above the wrist or of a foot at or above the ankle.

LOSS OF AN EYE means the complete and irrecoverable loss of the sight of an eye.

PERMANENT TOTAL DISABLEMENT means absolute disablement from engaging in or giving attention to any gainful occupation for twelve calendar months and at the end of that time being beyond hope of improvement.

Excess - NIL.

Section 2 - MEDICAL AND OTHER EXPENSES

To pay up to £20,000.

In all each injured or sick Insured Person in respect of:-

- Medical, hospital and treatment (including emergency dental) expenses necessarily incurred abroad during the Period of Insurance and additional hotel and repatriation costs to the British Isles necessarily incurred as the result of the Insured Person becoming ill or sustaining bodily injury during the Period of Insurance;
- The necessary travel and hotel expenses of a relative or friend of the Insured Person or qualified Nurse who shall on medical advice accompany the Insured Person because of the severe disability of the Insured Person.
- Transfer of the Insured Person's body or ashes in the event of death to the British Isles (EXCLUDING funeral and interment costs) or alternatively to pay up to £1,000 towards the cost of burial or cremation expenses if incurred abroad.

Excesses

Each and every loss or claim each person is subject to an excess of £10.00.

Section 3 - HOSPITAL BENEFIT

To pay up to £10 per day, up to a maximum of £200 in all, each Insured Person.

In the event that the Insured Person is admitted to a hospital (licensed for surgery) abroad as an in-patient due to accidental bodily injury or sickness of the Insured Person sustained abroad during the Period of Insurance Insurers will pay to the Insured Person a benefit of £10 for every complete day the Insured Person is hospitalised.

Excess - NIL.

Section 4 - BAGGAGE AND PERSONAL EFFECTS

To pay up to £600.

In all each Insured Person for lost, stolen or damaged baggage having been taken, sent in advance or purchased on holiday by the Insured Person. In the event that the Insured Person purchases a comparable replacement for the lost article, Insurers will pay the replacement cost providing the lost article was not more than 2 years old at the date of loss.

If the Insured Person cannot prove the age of the lost article, if the article is more than 2 years old or if the

article is not replaced, Insurers will deal with the claim on the basis of intrinsic value of the article, or the cost of repair whichever is the lesser. If any article is proven to be beyond economical repair, a claim will be dealt with under this policy as if the article had been lost. **LIMITED** to £200 any one item, pair or set.

Excesses

Each and every loss or claim each person is subject to an excess of £10.00.

Section 5 - PERSONAL MONEY

To pay up to £200.

In all this section to indemnify the Insured Person for theft or for the accidental loss of cash, bank or currency notes, cheques, postal or money orders, travellers cheques, travel tickets and petrol coupons. The actual sterling cash loss being limited to the amount allowed by the currency regulations applicable at the date of commencement of the holiday.

Excesses

Each and every loss or claim each person is subject to an excess of £10.00.

Section 6 - PERSONAL LIABILITY

To indemnify an Insured Person for legal liability to a third party up to a limit of £250,000 arising during the Period of Insurance as a result of:-

- Accidental injury to any person.
 - Accidental loss of or damage to property.
- In addition to indemnify an Insured Person for:-
- Third Parties costs and expenses recoverable from an Insured Person either under English Law or under the law of the Country where the accident, loss or damage occurred, and
 - An Insured Person's costs and expenses incurred with the written prior consent of Insurers.

Excesses - NIL.

Section 7 - LOSS OF DEPOSIT OR CANCELLATION

To pay up to the limits shown below in all each Insured Person in respect of reimbursement of:-

- (i) deposits paid and forfeited and further payments due under contract for travel and accommodation booked, and
(ii) additional travel and accommodation expenses essentially incurred, if the holiday is necessarily and unavoidably cancelled due to any cause beyond the control of the Insured Person.
- Additional travel and accommodation expenses necessarily incurred by the Insured Person due to strikes, riots, or civil commotions first commencing after the due time and date of departure of the booked flight or sea crossing limited to a maximum of £10 per day or part thereof, up to a maximum of £100 in all, in respect of each Insured Person.

The Limits

The indemnity under this section is limited to the following:-

- £418 in respect of each Insured Person.
- Notwithstanding the above the amount is further limited to the scale of cancellation charges as defined in the Booking Conditions of the brochure.

Excesses

Each and every loss or claim each person is subject to an excess of £10.00. Loss of Deposit Only claims are not subject to an excess.

Section 8 - CURTAILMENT

Up to £418 each Insured Person.

Proportional return of the irrecoverable pre-paid cost of the planned holiday as shown on the booking invoice, calculated at pro-rata for each complete day of the planned holiday lost, due to the necessary and unavoidable curtailment (as defined) of the planned holiday due to the death, injury or illness of the Insured Person, the person with whom the Insured Person is travelling, the spouse, parent, parent-in-law, grandparent, child, brother, sister, fiancée or close business colleague, resident in the United Kingdom, of the Insured Person or the person with whom the Insured Person is travelling.

Definition

Curtilment means abandonment by return to place of residence in the U.K. of the planned holiday after arrival at the booked destination as shown on the booking invoice.

Excesses - £10.00.

EXCLUSIONS

1. Applicable to all sections:-

- Directly or indirectly occasioned by, happening through or in consequence of war, invasion, acts of foreign enemies, hostilities (whether war is declared or not) civil war, military or usurped power or confiscation or nationalisation or requisition or destruction of or damage to property by or under the order of any government or public authority.
 - Arising directly or indirectly from nuclear fusion, nuclear fission or radioactive contamination.
 - Incidents which may give rise to a claim not notified direct in writing to Insurers within 31 days of the expiry of this insurance.
- Applicable to sections 2, 3, 4, 5, 6, 7 and 8. Claims which but for the existence of this policy would be covered under any other insurance policies.
 - Applicable to sections 1, 2, 3, 7 and 8. Directly or indirectly occasioned by, happening through or in consequence of Aviation other than as a fare paying passenger in a duly

certified multi-engined passenger carrying aircraft flown in the course of licensed operation for the transportation of passengers by air by a properly licensed crew.

4. Applicable to sections 1, 2, 3, 7 and 8 only.

Directly or indirectly occasioned by happening through or in consequence of Winter Sports, Mountaineering, Riding or Driving in races or rallies, Pot-holing, Skin Diving or other underwater or underground activity, suicide, insanity, intentional self-inflicted injury, the use of any drugs (other than medically prescribed, but excluding drug addiction), alcoholism, venereal disease and self exposure to needless peril (except in an attempt to save human life).

5. Applicable to sections 7 and 8 only.

- Arising directly or indirectly from:-
 - Government regulations (other than in respect of compulsory quarantine) or currency restriction or act, or
 - Omission or default of provider of transport or accommodation or of an Agent or Tour Operator through whom the travel arrangements were made, or
 - Disinclination to travel or financial circumstances of any Insured Person (arising from other than loss of his or her employment due to redundancy qualifying for payment under the Redundancy Payments Act of 1965 or as amended) or
 - Expenses payable by the Tour Operator, Hotel or Airlines, or
 - Delay in commencement of the Holiday, or
 - Surcharges levied by the Tour Operator increasing basic brochure prices.
- Directly or indirectly arising from failure to notify travel agent, or Tour Operator or provider of transport or accommodation immediately it is found necessary to cancel or curtail the travel arrangements.

6. Applicable to sections 2 and 3 only:-

Arising directly or indirectly from charges levied in the United Kingdom (except in respect of repatriation which is limited to £75).

7. Applicable to section 4 only:-

- for damage due to moth, vermin, wear and tear, atmospheric or climatic conditions or gradual deterioration.
- for breakage of fragile articles, china, glass or sculpture.
- for damage to sports gear whilst in use.
- for loss due to confiscation or detention by Customs or other authority.
- for loss of documents, deeds, manuscripts, passports or securities of any kind.
- for loss or damage whilst in the custody of an airline or other carrier unless reported immediately upon discovery and in the case of an airline a Property Irregularity Report obtained.
- in respect of those items specifically mentioned in Section 5.

8. Applicable to section 5 only:-

- In respect of loss of travellers cheques not reported to the local branch or agent of issuing authority within 24 hours of discovery of loss.
- In respect of those items specifically mentioned in Section 4.

9. Applicable to sections 4 and 5 only:-

- In respect of shortages due to error, omission, exchange or depreciation in value or confiscation by Customs or other authority.
 - Involving theft or suspected theft not reported to the police within 24 hours of discovery of loss.
- Applicable to section 6 only:-
 - Employers liability, contractual liability or liability to a member of an Insured Person's family.
 - Animals belonging to or in the care, custody or control of an Insured Person.
 - Any wilful, malicious or unlawful act.
 - Pursuit of trade, business or profession.
 - Ownership or occupation of land or buildings (other than occupation only of any temporary residence).
 - Ownership, possession or use of vehicles, aircraft or watercraft.
 - Legal costs resulting from any criminal proceedings.
 - Insanity, the use of any drugs (except as medically prescribed, but excluding drug addiction), the influence of intoxicating liquor, mountaineering, winter sports, riding or driving in races or rallies or the use of firearms.

IMPORTANT PLEASE KEEP THIS PAGE IN A SAFE PLACE AS IT CONTAINS FULL DETAILS OF COVERAGE IN THE EVENT OF A CLAIM.

CLAIMS

Notice of accidents and any other event which may give rise to a claim must be given in writing to: The Travel Claims Dept., Kersley, Procter & Day Limited, Lloyd's Avenue House, 6, Lloyd's Avenue, London, EC3N 3AX. Telephone 01-480-6871.

24 HOUR EMERGENCY SERVICE

A 24 hour Emergency Telephone Service is operated for the benefit of Insured Persons so that in the event of an EMERGENCY medical problem covered by this insurance, help and advice will be given, and, if necessary emergency repatriation will be arranged.

Emergency Telephone Nos:

Brighton (0273) 202141 or 23337.

Conditions of Booking

All bookings are accepted, and all tickets issued, subject to the following conditions. In the paragraphs which follow, "the company" means H. R. Richmond Limited trading as Epsom Coaches.

1. Deposit

A deposit of £10.00 per person (£20.00 on tours of 5-10 days) must be paid to ensure booking. Included in the deposit is the cost of insurance.

2. Balance

Full payment is due, at least 6 weeks prior to departure. The Company reserves the right to treat as cancelled any bookings not paid in full by the due date and to retain the deposit paid. Any booking made within the 6 weeks period must be accompanied by full payment.

3. Late Bookings

Rooming lists are sent to hotels at least 4 weeks before departure. If you wish to make a late booking, you will have to pay the usual deposit before we contact the hotel(s). The deposit will be refunded, should we be unsuccessful getting the accommodation.

4. Amendments

Once a booking has been made and deposit paid, an amendment fee of £5.00 per person (maximum of £10.00 per booking) will be charged in all cases where the client requests a change of tour or departure date (must be in the same year). Where changes are requested within the normal 6 week balance payment period, we will treat the original booking as cancelled and you will have to pay the usual cancellation fees.

5. Cancellation by Passenger

Cancellations should be communicated in writing to Epsom Coaches. If you cancel before 6 weeks of departure, you will lose your deposit. Cancellations within 6 weeks of departure will be subject to the following charges -

42-28 days	30% of the total cost
27-15 days	45% of the total cost
14 days or under	60% of the total cost

No refunds can be made on bookings cancelled on or after the date of departure. The insurance which is

included in the cost of the tour means you may be able to recover these cancellation charges.

6. Cancellation by Company

If we have to cancel a tour, you will be notified at least 6 weeks before departure. We will only cancel a departure within 6 weeks as a result of hostilities, political unrest or other circumstances amounting to force majeure, or unless you default in paying the balance. When we have to cancel a departure, you will be notified immediately and offered the choice of an alternative tour of at least comparable standard if available, or a prompt refund of all money paid (less reasonable expenses when a cancellation is due to circumstances amounting to a force majeure). Every effort will be made to operate all the departures advertised in this brochure.

7. Alterations

Should material alterations to arrangements become necessary, we will notify you immediately and give you the choice of accepting the alternative which must be of comparable standard, if available, or of receiving a prompt and full refund of all money paid (less reasonable expenses when an alteration is due to circumstances amounting to a force majeure).

8. Children's Reductions

Children under 3 cannot be accommodated on any of our tours. Subject to their sharing a bedroom with at least 2 adults, children over 3 and under 12 will be offered a 20% reduction on the usual cost. Most of the tours involve long distances and are not ideally suited to young children.

9. Price Adjustments

Prices in this brochure are per person and based on costs, fuel charges, currency exchange rates, tariff rates and taxes, including VAT, current at the time of going to press (1st September 1982). Should costs fluctuate, the right is reserved to increase or decrease prices up to the time you pay the balance.

10. Departure Points

The locations of the departure points are

given on page 2. Your choice of departure point must be advised to us at the time of booking and you will always be set down where you were picked up. If you decide to pick up at another authorised point, you must send us a written notification at least 2 weeks before departure.

11. Times

Passengers should arrive at their respective departure points at least 5 minutes prior to the scheduled time of departure. The Company will not be responsible for any loss or additional expense suffered by a passenger who arrives at the departure point later than the scheduled time of departure.

Everyone is kindly asked to be punctual when on tour. We have to run to schedule and cannot be held responsible for anyone being late.

The return times are only approximate and meant as a guide for passengers' convenience. If someone is meeting you, you are advised to confirm the return time with the driver and telephone from the last stop.

12. Luggage

Because space is limited, luggage must not exceed one medium-sized suitcase per person plus light hand baggage. The labels provided by the Company should be clearly filled in and securely attached to your luggage to avoid misdirection.

13. Seat Numbers

We reserve the right to allocate seat numbers other than those allocated at the time of booking, although this will be avoided so far as possible. It is essential that passengers only smoke in the smoking section of the coach.

14. Offensive or Incompatible Conduct

The Company reserves the right to decline any booking and to require any passenger to withdraw from a tour if it deems that his/her actions or conduct are offensive or incompatible with the general comfort of other passengers. In this event all monies paid by the passengers for service not taken would be refunded.

15. Animals

Animals cannot be carried on any tour



Acknowledgements

We wish to thank the following for loaning us transparencies:-

Abbey Hotel, Great Malvern; Austrian National Tourist Office; British Tourist Authority; Castle Howard; Danish Tourist Board; Feathers Hotel, Ludlow; Fortfield Hotel, Sidmouth; French Government Tourist Office; German National Tourist Office; Grand Hotel, Eastbourne; Imperial Hotel, Hythe; Netherlands National Tourist Office; Norwegian National Tourist Office; Old Swan Hotel, Harrogate; Scottish Tourist Board; Swiss National Tourist Office; Townsend Thoresen Ferries and Wales Tourist Board.

advertised in this brochure (except guide dogs on British tours only).

16. Radios, Tape Players, Musical Instruments etc.

In the interest of other passengers, radios, tape players, musical instruments etc. cannot be played.

17. Passports, Visas, Vaccinations etc.

Passports should be applied for, or renewed if necessary, at least 6 weeks before departure. Wives travelling alone must have their own passports. Please remember to have your passport readily available as you may be required to present it when crossing international frontiers. Holders of Commonwealth or other passports should check visa regulations with the Consulate of the countries to be visited.

Vaccinations are not normally required by UK residents for tours to Europe. However, from time to time any country may impose special regulations and you are advised to consult your doctor or travel agent for up to date details of requirements.

The Company will not be responsible or liable for any delay or expense suffered by passengers whose passports are not in order at the time of travel or who have neglected to deal with health and visa requirements.

18. Identity Cards

If you are a British subject or citizen of the Irish Republic without a passport, you may use an Identity Card on the following tours - Champagne Country, French Chateau Weekend and Paris 3 days. You will be required to fill in an application form and surrender a passport-size photograph at the time of booking (any child under 16 does not require a photograph and need only fill in an application form). The driver will issue the Identity Cards on the way down to the port.

19. Hotels and Refreshments Stops

The AA star ratings, Egon Ronay and Ashley Courtenay recommendations, are taken from 1982 guides.

Because the number of single rooms is always limited, friends are kindly asked to share wherever possible. Where there are 3 persons travelling together, it is usually possible to allocate a triple room. Full breakfast is provided except on the Continent where Continental breakfast is usually served. A 3 or 4 course table d'hote dinner is provided in the evening: coffee is usually included and except on the Continent, there is nearly always a choice of menu. We usually stop in a town where you can make your own arrangements for lunch. Morning coffee and afternoon tea are not included: we make convenient stops for these. The hotel service charge is usually included although some hotels leave it to the discretion of clients.

Although we are pleased to pass on any special requests to hotels - e.g. low floor, special diet etc. - we cannot guarantee your requirements will be met.

20. Gratuities to Drivers

The driver's gratuity is not included in the cost of a tour. If you have been happy with his services, it is customary to give the driver a gratuity according to the level of service received.

21. Complaints

Should you have a problem or complaint it is important, and in your own interest, that you notify our driver or local representative immediately so he can try to take remedial action. If having reported the matter, you still remain of the opinion that your complaint has not been satisfactorily dealt with, you should notify us in writing as soon as possible (not later than 28 days after your scheduled return date).

22. Arbitration

Any dispute arising out of, or in connection with this contract, which cannot be amicably settled, may (if the customer so wishes) be referred to arbitration under a special Scheme which, though devised by arrangement with the Association of British Travel Agents, is administered quite independently by the Chartered Institute of Arbitrators.

The Scheme provides for a simple and inexpensive method of arbitration on documents alone with restricted liability on the customer in respect of costs. Details of the scheme will be supplied on request.

23. Brochure

The information in this brochure is published in good faith and believed to be accurate at the time of going to press.



H. R. Richmond Limited, Blenheim Road, Epsom, Surrey KT19 9AF
Telephone Epsom (STD Code 03727) 27821. Telex 928493



Booking Form

Tour _____ Departure date _____

Departure point _____ Seat number(s) _____

Accommodation Single _____ Twin _____ Double _____ Triple _____
With/without private facilities

Mr/Mrs Miss	Initials	Surname	Address and telephone number

Deposit of £10.00 per person (£20.00 on tours of 5-10 days).
Balance due 6 weeks prior to departure (no reminder will be sent).
Insurance is included in the cost of the deposit (see page 30).