

# ***Epsom Coaches***

**2-10 day tours and holidays 1977**



# CONTENTS

	<i>page</i>		<i>page</i>
<b>Continent</b>		<b>West Country</b>	
Berlin (5 days)	3	Bath (3 days)	15
Brussels and the Ardennes (3 days)	3	Bournemouth (3 days)	16
Five Countries (5 days)	3	Cornwall (8 days)	16
Ghent and Bruges (2 days)	4	Devon and Cornwall (4 days)	16
Gothenburg (5 days)	4	Exeter and Torquay (3 days)	17
Holland in Springtime (4 days)	4	Ilfracombe (4 days)	17
Ostend (8 days)	5	Isles of Scilly (8 days)	17
Paris (3 days)	5	Lynton (2 days)	18
Rhine and Moselle Valleys (4 days)	5	Sidmouth (4 days)	18
		Sidmouth at Christmas (5 days)	18
<b>Channel Islands</b>		Torquay at Christmas (4 days)	19
Guernsey by air (8 days)	6	Torquay (4 days)	19
Jersey by air (8 days)	6	Torquay (8 days)	19
Jersey by sea (8 days)	7		
		<b>South East and Isle of Wight</b>	
<b>Scotland</b>		Eastbourne (3 days)	20
Edinburgh and Trossachs (4 days)	7	Eastbourne (8 days)	20
Kyles of Bute & Loch Lomond (4 days)	7	Rye (2 days)	20
Grand Tour of Scotland (10 days)	8	Isle of Wight (8 days Bonchurch)	21
		Isle of Wight (8 days Shanklin)	21
<b>Northumbria and Yorkshire</b>			
Harrogate (3 days)	8	<b>Overnight stops and hotels</b>	22
Border Country and the Dales (4 days)	9		
York (3 days)	9	<b>Booking form</b>	22
<b>Cumbria and Isle of Man</b>		<b>Picking-up points and times</b>	23
English Lakes (4 days)	9		
Isle of Man (5 days)	10	<b>Conditions of booking</b>	23
<b>North West</b>		<b>Summary</b>	24
Blackpool Illuminations (3 days)	10		
Chester (3 days)	10		
Derbyshire Dales (2 days)	11		
Southport (8 days)	11		
<b>Wales</b>			
Cardiff (3 days)	11		
Llandrindod Wells (3 days)	12		
Tenby (8 days)	12		
Wales (4 days)	13		
<b>Heart of England</b>			
Wye Valley (2 days)	13		
Malvern Hills (2 days)	13		
Cotswolds (2 days)	14		
Stratford-upon-Avon (3 days)	14		
<b>English Shires and East Anglia</b>			
Cambridge (2 days)	14		
Lincoln (2 days)	15		
Norwich and Norfolk Broads (3 days)	15		



## Express Services Excursions and Tours

A brochure will be published in February, 1977

# Berlin

**5 days £73.50**

Single room supplement £5.50

**Tuesday 13th September**

*Including ferry fares; dinner bed and breakfast at the Hotel Haarhuis\*\*\*, Arnhem on the first and last night (all rooms with bath or shower) and bed and breakfast at the Plaza Hotel\*\*\*\*, Berlin on the second and third night (all rooms with bath and shower).*

**Tuesday** Epsom 0600 (other points Group A, inside back page), Dover, British Rail ferry to Ostend, across Belgium and Holland to Arnhem (popular Dutch resort graced with many flowers, scene of hard fought battle during the last war).

**Wednesday** Hanover, across the frontier into the German Democratic Republic at checkpoint Alpha, along the Corridor route to West Berlin.

**Thursday** Morning tour of West Berlin and visit to the Wall at Brandenburg Gate, break for lunch

and shopping in the Kurfurstendamm, afternoon excursion to East Berlin where we are joined by a guide at check-point Charlie, return to West Berlin for another night.

**Friday** Return via the Corridor route to Helmsedt and Arnhem for another night in the Hotel Haarhuis.

**Saturday** Via Southern Holland into Belgium, Antwerp (stop at Rubens' House), Ostend, British Rail ferry to Dover, home approximately 0100.

# Brussels and the Ardennes

**3 days £43.50**

Single room supplement £6.25

**Tuesday 26th July**

*Including ferry fares and two nights dinner bed and breakfast at the Hotel Bedford\*\*\*, Brussels (all rooms with bath).*

**Tuesday** Epsom 0830 (other points Group M, inside back page), Dover, British Rail ferry to Calais, Ghent (short stop in the 'City of Flowers', many picturesque bridges), Brussels (Belgian capital and administrative centre of the common market; in enemy occupation during both wars; manufactures lace, textiles, silk and pottery).

**Wednesday** Time to explore Brussels or go on an excursion to Waterloo (where Napoleon was defeated by Wellington in 1815) and Han-sur-Lesse (visit the caves, boat excursions on an underground river).

**Thursday** Bruges (coffee break in 'Venice of the North'), Ostend, British Rail ferry to Dover, home approximately 2100.



Brussels Town Hall

# Five Countries

**5 days £81.50**

Single room supplement £9.50

**Saturday 25th June**

*Including ferry fares and four nights dinner bed and breakfast - first night at the Hotel Bedford\*\*\*, Brussels (all rooms with bath); second and third night at the Merian Hotel\*\*\*, Trier (all rooms with bath and shower); last night at the Hotel de la Couronne\*\*\*\*, Liege (all rooms with bath).*

**Saturday** Epsom 0630 (other points Group B, inside back page), Dover, British Rail ferry to Calais (lunch stop in England's last stronghold in France), via Dunkirk to Bruges (tea stop in 'Venice of the North', lace manufacture), Brussels (Belgian capital, many interesting medieval buildings).

**Sunday** Bastogne (lunch stop, famous 'Battle of the Gap'), Luxembourg (tea stop, grand ducal palace and magnificent cathedral), Trier.

**Monday** Tour of the Rhine and Moselle valleys stopping in Koblenz for lunch, evening visit to a cellar for wine tasting.

**Tuesday** Morning conducted tour of Trier (oldest town in Germany; many interesting Roman remains including city gate, basilica, imperial baths, amphitheatre and bridge). Afternoon drive via the Eiffel Mountains to Liege (fortified city, iron and coal mines extend under the city).

**Wednesday** Antwerp (lunch stop and time to see Rubens' House), Ostend, British Rail ferry to Dover, home approximately 0100.

# Ghent and Bruges

## 2 days £26.50

Single room supplement £2.00  
Supplement for room with bath  
or shower £2.00

**Saturday 3rd September**

*Including ferry fares and  
dinner bed and breakfast at  
the Park Hotel\*\*, Ghent.*

**Saturday** Epsom 0600 (other points Group A, inside back page), Dover, British Rail ferry to Ostend (time for lunch on board), short drive to Bruges (tea shop in 'Venice of the North', time to go on a canal trip or tour the old town by pony and trap; watch lace being made), arrive early evening in Ghent.

**Sunday** A little time to explore Ghent ('City of Flowers' and birthplace of John of Gaunt, rich in art treasures, fine cathedral, rivers crossed by picturesque stone bridges), Ostend (time for lunch, a little shopping and sightseeing), British Rail ferry to Dover, home approximately 2345.

# Gothenburg

## 5 days £80.00

Supplement for berth in two  
berth cabin £13.75  
Single room supplement £6.75

**Thursday 18th August**

*Including return travel from  
Felixstowe to Gothenburg with  
a berth in a four berth cabin  
with shower and W.C., two  
nights bed and breakfast in the  
Hotel Scandinavia\*\*\* (all  
rooms with private facilities) in  
Gothenburg and a tour up the  
West Coast of Sweden.*

**Thursday** Epsom 0830 (other points Group M, inside back page), lunch stop en route, Felixstowe, early afternoon sailing on the Tor Britannia (one of the most spacious and luxurious ferries on the North Sea, cheerfully decorated lounges and bars, cinema with top films, four sundecks, heated swimming pool, dancing in the main lounge, night club discotheque, casino, gift shops including supermarket, playship for children, grill room and sumptuous restaurant serving Swedish dishes at reasonable prices).

**Friday** Arrive in Gothenburg early afternoon and check in at your hotel. Gothenburg has a maze of traffic-free streets in the shopping centre where you can buy Swedish glass, silverware and pewterware. There are many excellent

restaurants and nightclubs with cabaret and floorshows. Gothenburg has many fine parks with beautiful gardens and its cultural life rivals that of Stockholm.

**Saturday** Tour up the beautiful West Coast of Sweden to see the spectacular Tjorn Bridges which link the mainland with lovely Tjorn Island and the picturesque village of Skarhamm.

**Sunday** Morning and afternoon free in Gothenburg, early evening sailing.

**Monday** Arrive in Felixstowe late afternoon, stop en route for dinner, home approximately 2200.

# Holland in Springtime

## 4 days £63.00

Single room supplement £7.00

**Tuesday 5th April**

**Tuesday 12th April**

**Wednesday 20th April**

*Including ferry fares and three  
nights dinner bed and break-  
fast - Hotel Charenwijk\*\*,  
Noordwijk-on-Sea (most rooms  
with private bath or shower).*

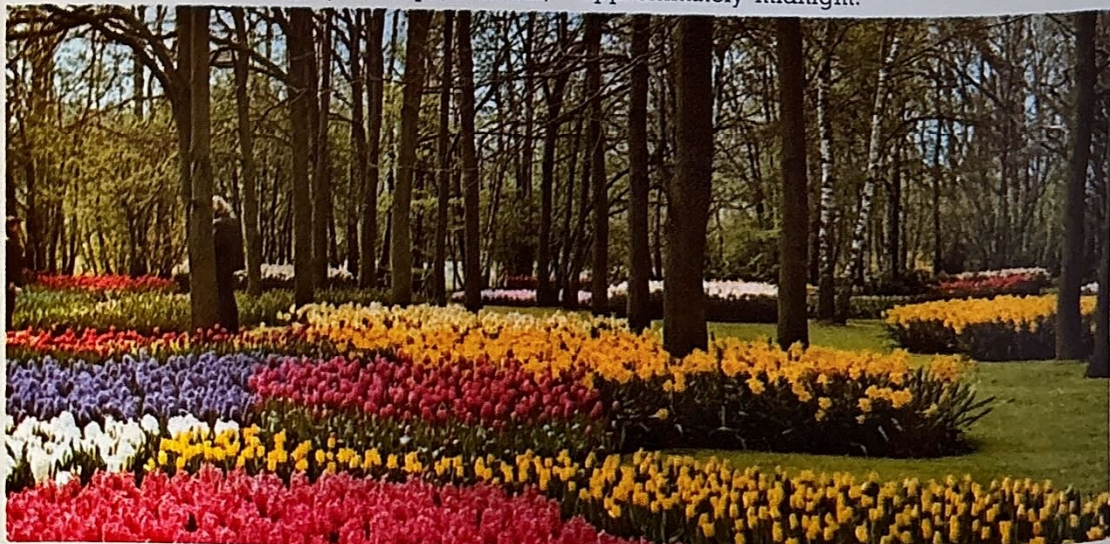
**First day** Epsom 0800 (other points Group J, inside back page), Dover, Townsend-Thoresen ferry to Zeebrugge, direct to Noordwijk with dinner stop en route.

**Second day** Morning visit to the Flower Auctions at Aalsmeer, Amsterdam (lunch stop, time to go on a canal trip or visit the Rijks Museum), Vogelenzang (tea stop, visit a flower farm), return via the Tulip Route to Noordwijk.

**Third day** Morning visit to the Keukenhof Gardens (magnificent display of tulips, narcissi,

hyacinths and smaller bulbs in a beautiful park). Evening excursion to Madurodam (picturesque model village beautifully lit at night).

**Fourth day** Rotterdam (coffee stop, important port, excellent shopping centre), North Sea coastal route to Middelburg (short stop, attractive and traditional Dutch town where some of the people still wear national costume), Calais, Townsend-Thoresen ferry to Dover, home approximately midnight.



Keukenhof Flower Gardens

## Ostend (centred holiday)

**8 days £71.00**

Single room supplement £8.25

**Saturday 3rd September**

*Including ferry fares and seven nights dinner bed and breakfast at the Hotel Westminster\*\*\*, Ostend (all rooms with private shower).*

**Saturday 3rd** Epsom 0600 (other points Group A, inside back page), Dover, British Rail ferry to Ostend (time for lunch on board), arrive at the Hotel Westminster early afternoon.

**Saturday 10th** Leave the hotel after breakfast and check in at the terminal for the ferry back to Dover (time for lunch on board), home approximately 1715.

**Ostend** Ostend is one of the liveliest resorts in Europe: it has beautiful sandy beaches and bathing facilities, water sports and entertainments and amusements of every kind. There are many cafes in the town (some with music every night), variety shows, night clubs, cinemas and

delightful restaurants. The shops are up to date and many are open until late in the evening. Every week there is an attractive market. The Hendrika Park and Ostend Racecourse also have a lot to offer. Ostend is a good centre for touring Belgium, France and Holland.

**Hotel Westminster\*\*\*** The Westminster is a modern first-class hotel situated on one of the main boulevards of Ostend only 50 yards from the promenade and beach. It is in the immediate neighbourhood of the market, landing station, Festival Hall, Casino Kursaal, the Yacht and picturesque fishing harbour; also in the very centre of the shopping area and the entertainment district. The rooms are pleasantly furnished and all have bath or shower-bath, toilet, radio and telephone.

## Paris

**3 days £52.50**

Single room supplement £12.50

**Friday 5th August and Friday 14th October**

*Including ferry fares and two nights dinner bed and breakfast at the Hotel Astra\*\*\*, Paris (all rooms with bath or shower).*

**Friday** Epsom 0730 (other points Group E, inside back page), Dover or Folkestone, British Rail ferry to Boulogne, via Montreuil, Abbeville and Beauvais to Paris.

**Saturday** Optional morning tour to see Notre Dame, The Louvre, Eiffel Tower, Champs Elysees and Arc de Triomphe. Optional afternoon excursion to the Palace of Versailles (built by

Louis XIII and set in magnificent gardens with fountains, grottoes, ponds and statues).

**Sunday** Leave after breakfast and drive to Le Touquet (lunch stop, fashionable resort situated amidst pine woods and extensive beaches covered in white sand), Calais, British Rail ferry to Dover, home approximately 2300 (2200 October).

## Rhine and Moselle Valleys

**4 days £65.50**

Single room supplement £5.75

**Tuesdays 23rd August and 6th September**

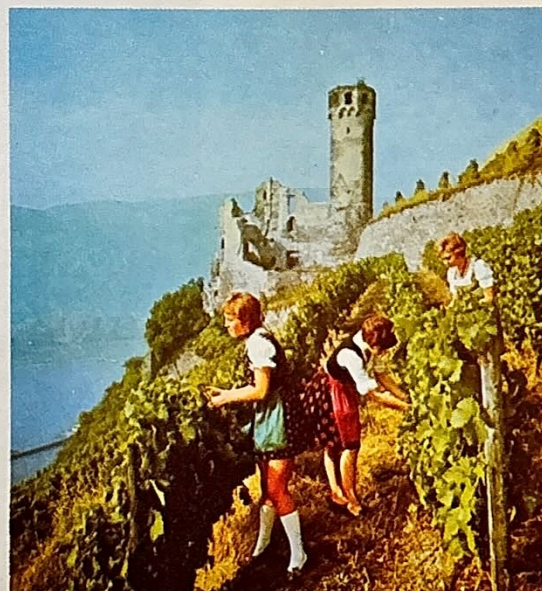
*Including ferry fares and three nights dinner bed and breakfast (all rooms with bath) - first night Hotel de la Couronne\*\*\*\*, Liege; second night Hotel Traube\*\*\*, Rudesheim; third night Merian Hotel, Trier\*\*\*.*

**Tuesday** Epsom 0800 (other points Group J, inside back page), Dover, Townsend-Thoresen ferry to Zeebrugge (lunch available on board), tea stop en route, arrive Liege early evening.

**Wednesday** Across the frontier into Germany near Aachen, Cologne (lunch stop and time to see the Gothic cathedral), cross the Rhine near Bonn and follow the east bank past fairy tale castles to Koblenz (tea stop, at the confluence of the Rhine and Moselle), Rudesheim (celebrated wine growing centre).

**Thursday** Re-trace the journey through wine-growing country to Koblenz, follow the Moselle Valley to Cochem (coffee break), Bernkastel, Trier (short conducted tour around the oldest town in Germany, many interesting Roman remains, evening visit to a cellar for wine-tasting).

**Friday** Luxembourg (coffee stop), Brussels (lunch stop in the Belgian capital and administrative centre of the Common Market), Bruges (tea stop in 'Venice of the North'), Calais, British Rail ferry to Dover, home approximately midnight.



Grape picking in the Rhine Valley

# Guernsey (centred holiday)

**8 days  
from £99.50**

**Sunday 2nd October**

*Including air fares and seven nights dinner bed and breakfast at the Duke of Richmond Hotel\*\*\*\* or 7 days full board at the Birnam Court Hotel, St. Peter Port.*

**Sunday 2nd** Picking up times awaiting final flight details, Southampton Airport, flight by British Airways (IT6BA2/06) or British Island Airways (IT7UK2/110) to Guernsey, coach to your hotel in St. Peter Port.

**Sunday 9th** Leave after breakfast and return to Guernsey Airport, flight to Southampton, lunch stop en route, return time awaiting final flight details.

**Guernsey** Flowers and shrubs bloom throughout the year in the mild climate of this holiday island. There are flat sandy beaches, clear blue seas and warm secluded bays. St. Peter Port the capital has a beautiful harbour and narrow winding streets with many interesting shops. Victor Hugo's House, the German Underground Hospital and the Occupation Museum are worth visiting and boat trips operate to Herm and Sark and further afield to Jersey and France.

**Duke of Richmond Hotel\*\*\*\*** Guernsey's most modern hotel, commanding view of the ancient town and harbour, five minutes walk from the shopping centre, all bedrooms with telephones and radios, three bars, ballroom, television lounge, tropical sun deck, two automatic lifts, automatic air ventilation, full central heating.

**Birnam Court Hotel** Situated in the finest residential district of St. Peter Port high above the town, recently rebuilt and furnished, heated swimming pool, extensive hotel grounds, English and Continental cuisine.

	<b>Duke of Richmond</b>	<b>Birnam Court</b>
Basic charge	£133.50	£99.50
Single room supplement	£3.50	£3.50
Supplement per person for room with private bath	£15.00	£4.00

# Jersey by air (centred holiday)

**8 days £89.00**

Single room supplement £4.00  
Supplement per person for room  
with private bath £4.00

**Sundays 1st May,  
15th May and  
9th October**

*Including air fares and seven nights dinner bed and breakfast at the Hotel Marina (First Register), St. Helier.*

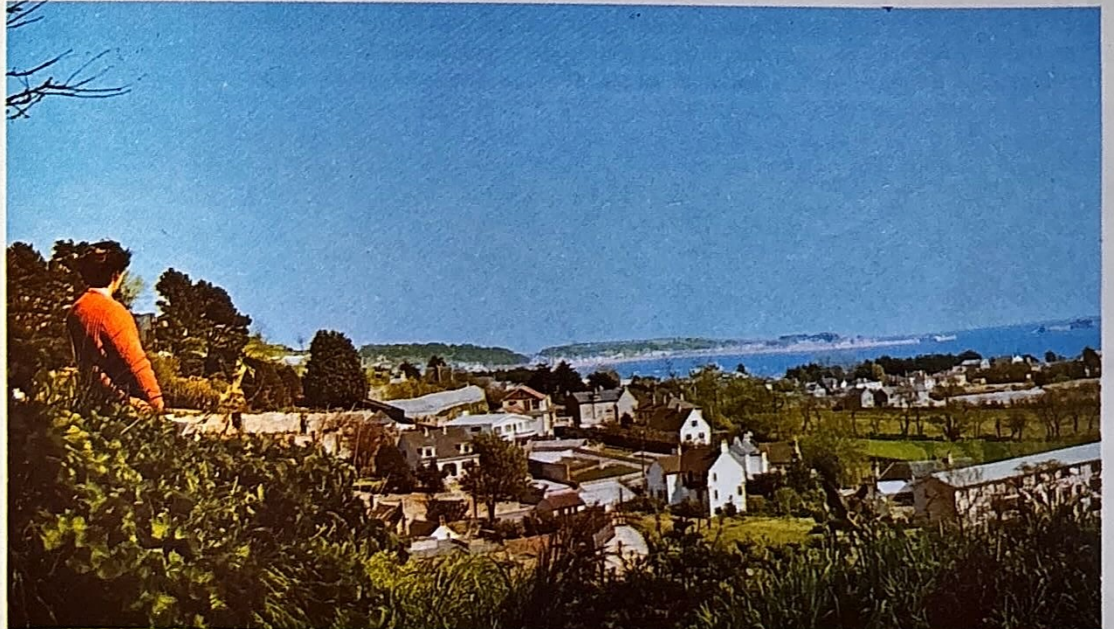
**First day** Picking up times awaiting final flight details, Southampton Airport, flight by British Airways (IT6BA2/06) or British Island Airways (IT7UK2/110) to Jersey, coach to the Hotel Marina in St. Helier.

**Eighth day** Leave after breakfast and return to Jersey Airport, flight to Southampton, lunch stop en route, return time awaiting final flight details.

**Jersey** Jersey is an island of great natural beauty with superb scenery and beaches which rival any that can be seen in Europe. With a warm climate, golden sands, sheltered bays and sparkling blue seas, the island is an ideal holiday resort. Passports are not necessary for British subjects and

there are no currency restrictions. Boat excursions operate regularly to the other Channel Islands and to France. Coach trips operate every morning, afternoon and evening to all parts of the island. There is a wide range of luxury goods in the shops - leather goods, jewellery, cosmetics, perfumes, liquor and tobacco. There are many parks and gardens and facilities for most sports.

**Hotel Marina (First Register)** First class hotel overlooking the sea and only a few minutes walk from the shopping centre, reputation for fine food and cuisine, licensed bar overlooking the harbour entrance, central heating and double-glazing throughout, lift to all floors, rooftop sunbathing area.



St. Helier, Jersey

## Jersey by sea (centred holiday)

**8 days £79.50**

Single room supplement £4.00  
Supplement per person for room  
with bath £4.00

**Sunday 25th September**

*Including ferry fares and seven  
nights dinner bed and break-  
fast at the Hotel Marina (First  
Register), St. Helier.*

**First day** Epsom 0730 (other points Group F, inside back page), direct to Weymouth, British Rail ferry to St. Helier, early evening arrival at the Hotel Marina.

**Last day** Leave after early breakfast, British Rail

ferry to Weymouth arriving mid afternoon, stop en route for high tea, home approximately 2000.

**Jersey See** 'Jersey by Air', page 6.

**Hotel Marina** See 'Jersey by air', page 6.

## Edinburgh and Trossachs

**4 days £55.00**

Single room supplement £9.75  
**Saturday 4th June**

*Including three nights dinner  
bed and breakfast at the Esso  
Motor Hotel\*\*\*, just over a  
mile from Edinburgh city  
centre (all rooms with bath or  
shower).*

**Saturday** Epsom 0715 (other points Group D, inside back page), direct to Edinburgh with refreshment stops en route arriving early evening at the Esso Motor Hotel.

**Sunday** Across the Lennox Hills to Drymen, along Duke's Road with its fine views over the lochs and valleys to the Trossachs (lunch stop, scenes of mountains and woodlands including Sir Walter Scott's 'Lady of the Lake', optional steamer excursion on Loch Katrine), Stirling (past

the famous castle), across the Forth Suspension Bridge and back to Edinburgh.

**Monday** Morning conducted tour of Edinburgh visiting Holyrood Palace, the Royal Mile, Edinburgh Castle and Princes Street. Afternoon free to explore the city on foot.

**Tuesday** Leave after breakfast and return direct (refreshment stops en route), home approximately 2200.

## Kyles of Bute and Loch Lomond

**4 days £49.00**

Single room supplement £2.25  
**Fridays 17th June,  
15th July, 12th August  
and 16th September**

*Including three nights dinner  
bed and breakfast - first night  
County Hotel\*\*, Dumfries;  
second night Arrochar Hotel\*\*,  
Loch Long (all rooms with  
bath); third night Royal County  
Hotel\*\*\*, Durham (all rooms  
with bath).*

**Friday** Epsom 0715 (other points Group D, inside back page), via the Thames Valley to Woodstock (coffee stop), lunch stop en route, Gretna Green (halt at the Blacksmith's shop), Dumfries (home town of Robert Burns, beautiful river with a salmon leap).

**Saturday** Along Nithsdale past rolling hills, North Ayrshire coast, Gourock, ferry across the River Clyde to Dunoon (lunch stop in a popular Clyde-side resort), along a mountain road to view the Kyles of Bute, Holy Loch (Polaris submarine base), Tighnabruaich (tea stop), Loch Fyne, Rest and be Thankful, Arrochar (hotel overlooking Loch Long).

**Sunday** Along the banks of Loch Lomond, Trossachs (scenes of mountains and woodlands including Sir Walter Scott's 'Lady of the Lake'), Callander (coffee break in 'Tannochbrae'), Forth Bridge, Edinburgh (short tour to see Holyrood Palace, the Royal Mile, Edinburgh Castle and Princes Street), Melrose (tea stop, time to see the Abbey ruins), Durham.

**Monday** Brief visit to the majestic cathedral overlooking the river, York (lunch stop, old city walls, medieval streets overhung by gables, York Minster), home approximately 2100.



Edinburgh

# Grand Tour of Scotland

**10 days £136.50**

Supplement for single room  
£20.50

**Fridays 27th May,  
24th June, 22nd July,  
19th August and  
9th September**

*Including nine nights dinner  
bed and breakfast (all rooms  
with bath or shower) - first  
night Crown and Mitre  
Hotel\*\*\*, Carlisle; second to  
sixth night West End Hotel\*\*,  
Fort William; seventh and  
eighth night Esso Motor  
Hotel\*\*\*, Edinburgh; last night  
Royal County Hotel\*\*\*\*, Dur-  
ham.*

**Friday** Epsom 0745 (other points Group H, inside back page), via Hampton Court to Woodstock (coffee break, Blenheim Palace birthplace of Sir Winston Churchill), Cotswold Hills and Vale of Evesham, lunch stop en route, arrive early evening in Carlisle (former Roman Station and famous Border city, interesting cathedral and castle with dungeons).

**Saturday** Gretna Green (stop to see the blacksmith's shop where runaway couples from England could be married without consent), via Annandale to Glasgow (lunch stop in George Square, many fine houses and shops), along the banks of Loch Lomond and into the Highlands via the Falls of Falloch, the Bridge of Orchy, Rannoch Moor and the Pass of Glen Coe to Fort William.

**Sunday** Day free in Fort William (important resort in the West Highlands in the shadow of Glen Coe Britain's highest mountain, Museum with secret portrait of Bonnie Prince Charlie).

**Monday** Excursion to Inverness (capital of the Highlands beautifully situated at the head of Loch Ness), spectacular river and loch scenery en route, passing Aviemore (skiing resort) and the Commando Memorial at Spean Bridge.

**Tuesday** Day excursion to Oban to visit the little granite cathedral, the castle ruins and the famous glassworks.

**Wednesday** Day excursion to the Isle of Skye crossing the Kyles of Lochalsh to Kyleakin by ferry, particularly attractive route including loch, mountain and forest scenery.

**Thursday** Leave Fort William, Pass of Killiecrankie, Pitlochry (visit the hydro-electric dam and the fish ladder), Perth (lunch stop in the 'Fair City', once the capital of Scotland), across the Forth Suspension Bridge, Edinburgh (hotel just over a mile from the city centre).

**Friday** Morning conducted tour of Edinburgh visiting Edinburgh Castle, the Royal Mile and Holyrood Palace, afternoon free for sightseeing and shopping in Princes Street (one of the finest shopping centres in Europe).

**Saturday** Leave Edinburgh, Abbotsford (Sir Walter Scott's home as it was when he died in 1832, in a wooded setting by the River Tweed), Melrose (lunch stop, border town with a ruined abbey), across the Cheviot Hills and via Redesdale to Durham.

**Sunday** Brief visit to Durham Cathedral (on a majestic site overlooking the River Wear), York (lunch stop and time to see York Minster and the medieval streets overhung by timbered gables), home approximately 2100.



Loch Lomond

## Harrogate (flower show)

**3 days £33.50**

Single room supplement £2.00  
Supplement per person for room  
with bath £2.25

**Friday 22nd April**

*Including two nights dinner  
bed and breakfast at the Cairn  
Hotel\*\*\*, Harrogate.*

**Friday** Epsom 0800 (other points Group K, inside back page), Nottingham (lunch stop, interesting castle and old gateway, on a rocky hill sloping down to the River Trent), via the Sherwood Forest (associated with Robin Hood) to Harrogate.

**Saturday** At leisure in Harrogate 'The floral resort of England'. The Northern Horticultural Trial Gardens and the Harlow Car Gardens are open to the public and our visit coincides with the Great Spring Flower Show. In the elegant

avenues and tree lined streets are many interesting shops.

**Sunday** Leave after breakfast, Lincoln (lunch stop, magnificent cathedral on a hill overlooking the River Witham, many Roman remains, steep cobbled streets lined by medieval houses), Springfields (tea stop, twenty acre garden where English bulb-growers have contributed towards a complete showcase of their products), home approximately 2100.

# Border Country and Yorkshire Dales

## 4 days £47.50

Single room supplement £2.50

Tuesdays 31st May,  
5th July and 16th August

*Including three nights dinner bed and breakfast (all rooms with private bath) - White Swan Hotel\*\*\*, Alnwick; Royal County Hotel\*\*\*\*, Durham; Bankfield Hotel\*\*\*, Bingley.*

**Tuesday** Epsom 0715 (other points Group D, inside back page), Lincoln (lunch stop, majestic cathedral on a hill overlooking the River Witham, steep cobbled streets with medieval houses), Richmond (afternoon stop, beautifully situated above the River Swale, associated with the song 'Lass of Richmond Hill'), arrive in Alnwick in time for dinner.

**Wednesday** Via the causeway to Holy Island (restored castle and ruins of a priory, limestone cliffs and sand-dunes, seals often seen offshore), Berwick-upon-Tweed (border town and scene of many battles between the English and the Scots in the Middle Ages), across the border just into Scotland, across the Cheviot Hills and back into England, via Redesdale to Chesters (chance to visit the excavated remains of a Roman fort), Durham.

**Thursday** Time to visit Durham Cathedral, Ripon (lunch stop, fine Cathedral, in the market square stands a very tall cross and nearby is the old Town Hall), via the Yorkshire Dales to Haworth (bleak village on the shoulder of the moors, parsonage where the Bronte sisters once lived now a museum), Bingley (hotel in spacious landscaped gardens overlooking the River Aire).

**Friday** Return via the Derbyshire Peaks over Snake Pass and past Ladybower Reservoir to Bakewell (famous for Bakewell tarts) and Matlock (lunch stop, among woodland and hills where the River Derwent runs through a gorge, unusual caves and medicinal springs, views of the peaks and crags), tea stop en route, home approximately 2000.

## York

## 3 days £33.00

Single room supplement £2.00

Fridays 1st April and  
30th September

*Including two nights dinner bed and breakfast at the Abbey Park Hotel\*\*\*, York (all rooms with bath).*

**Friday** Epsom 0800 (other points Group K, inside back page), Stamford (lunch stop, beautiful stone-built market town with many interesting old houses). York.

**Saturday** Day free to explore York - York Minster; medieval walls built on Roman foundations; many narrow medieval streets with overhanging timbered gables including the Shambles; Castle Museum with period rooms, a cobbled street and an Edwardian street; Folk Museum of Yorkshire Life.

**Sunday** Lincoln (lunch stop, majestic triple-towered cathedral built after an earthquake destroyed the old church in 1185, steep cobbled streets with medieval houses, Roman arch spans the main road, Roman Fossdyke canal still used), home approximately 2000.



Bootham Bar and York Minster

## English Lakes

## 4 days £52.00

Single room supplement £6.25

Thursdays 28th July and  
1st September

*Including three nights dinner bed and breakfast at the Burnside Hotel\*\*, Bowness-on-Windermere (all rooms with bath or shower).*

**Thursday** Epsom 0800 (other points Group K, inside back page), Lichfield (lunch stop, cathedral with three spires known as 'Ladies of the Vale', Dr. Johnson's birthplace in the market square), arrive late afternoon in Bowness-on-Windermere.

**Friday or Saturday** (depending on the weather). Tour of the Lakes - across Windermere by steamer, Hawkshead, Coniston, Ambleside, Grasmere (noted for scent and gingerbread, Dove Cottage former home of Wordsworth, Wordsworth Museum), Keswick (tea stop, on the northern extremity of Derwent Water), Ullswater, Kirkstone Pass, Bowness.

**Friday or Saturday** Day free in Bowness - on an attractive bay on the east side of Windermere, pleasure steamers and boats on the lake, hotel stands in five acres of its own gardens and woodland with fine views of Windermere and the surrounding hills.

**Sunday** Coventry (lunch stop, time to see the new cathedral which contains works by many of Britain's finest artists and craftsmen), Banbury (tea stop, famous for its Banbury cakes and the nursery rhyme 'Ride a cock horse to Banbury Cross'), home approximately 2130.

# Isle of Man

## 5 days £74.50

Single room supplement £3.00  
Supplement per person for room  
with private bath £5.25

**Tuesday 20th September**

*Including air fares and four  
nights dinner bed and break-  
fast at the Sefton Hotel\*\*\*,  
Douglas.*

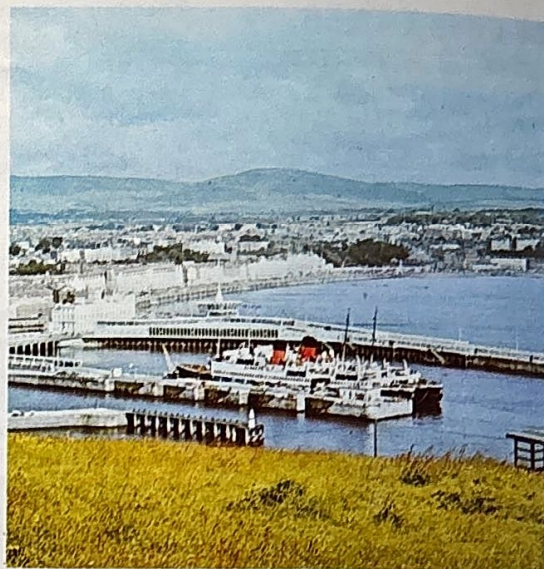
**Tuesday** Picking up times awaiting final flight details, direct to Speke Airport, Liverpool (refreshment stops en route), flight by British Airways (IT6BA2/10) to Ronaldsway Airport, coach to the Sefton Hotel, Douglas.

**Wednesday** Morning free in Douglas – magnificent bay, expansive sandy beach, clear blue sea and beautiful sunken gardens. Afternoon tour – St. John's (site of the world's largest open-air parliament), Port Erin, view of the Calf of Man (southern-most point), Castletown (old capital, interesting castle), along Marine Drive (rugged cliff scenery), Douglas.

**Thursday** Morning free. Afternoon tour – Peel (home of the Manx kipper industry), Point of Ayre (northern-most point), Ramsey (popular coastal resort), round Snaefell (2034 feet), Laxey (stop at "Lady Isabella" waterwheel), Onchan, Douglas.

**Friday** Day free for shopping and a last look around Douglas.

**Saturday** Leave after breakfast, Ronaldsway Airport, flight by British Airways to Speke, refreshment stops en route, return time awaiting flight details.



Douglas Harbour, Isle of Man

# Blackpool Illuminations

## 3 days £30.00

Single room supplement £2.00  
Supplement per person for room  
with private bath £2.00

**Friday 7th October**

*Including two nights dinner  
bed and breakfast at the  
Carlton Hotel\*\*, Blackpool.*

**Friday** Epsom 0930 (other points Group Q, inside back page), via motorways (refreshment stops en route) to Southport (tea stop; time to see Lord Street 'Shopping Centre of the North', the gardens and the sea), arrive in Blackpool early evening.

**Saturday** Day at leisure. Blackpool is one of the most popular resorts in Britain. It has three piers, the Tower, a Pleasure Beach with many side-shows and Stanley Park with its superb gardens.

In the evening the Illuminations light up: colourful garlands of fairy lights and rainbow fountains stretch six miles along the promenade and giant tableaux bring old legends back to life.

**Sunday** Leave after breakfast, Knutsford, Buxton, Bakewell (where the original Bakewell tarts were made), Matlock (lunch stop, among woodland and hills where the River Derwent runs through a gorge), M1 (refreshment stops en route), home approximately 2000.

# Chester

## 3 days £31.00

Single room supplement £2.50  
Supplement for room with  
private bath £2.50

**Saturday 6th August**

*Including two nights dinner  
bed and breakfast at the  
Blossoms Hotel\*\*\*, Chester.*

**Saturday** Epsom 0800 (other points Group K, inside back page), Lichfield (lunch stop, cathedral with three spires known as 'Ladies of the Vale', Dr. Johnson's birthplace in the market square), Chester.

**Sunday** Morning free in Chester – Roman walls, beautiful cathedral, black and white half timbered houses and old taverns, shopping in medieval galleried streets known as 'The Rows'. Optional afternoon excursion via the Mersey Tunnel to

Liverpool (tea stop and time to see the new Roman Catholic cathedral).

**Monday** Shrewsbury (coffee break, beautifully situated on a bend on the River Severn, wealth of old half-timbered houses and inns), Worcester (lunch stop, time to visit the Cathedral and the shop in the Royal Worcester Porcelain Works), Vale of Evesham, Cotswolds, Bourton-on-the-Water (lovely old Cotswold village on the River Windrush, stone houses and miniature bridges), Chiltern Hills, Thames Valley, home approximately 2045.

# Derbyshire Dales

**2 days £22.00**

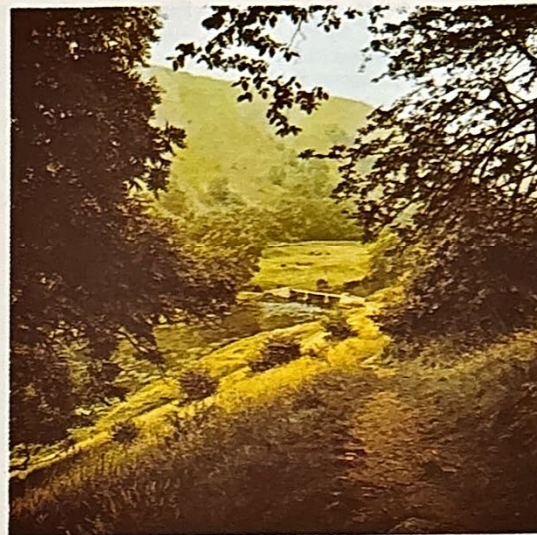
Single room supplement £4.50

**Wednesday 24th August**

*Including dinner bed and breakfast at the New Bath Hotel\*\*\*, Matlock (all rooms with private bath).*

**Wednesday** Epsom 0800 (other points Group K, inside back page), Matlock (check in at the New Bath Hotel, lunch stop), afternoon excursion via Bakewell (Rutland Arms where the original Bakewell tarts were baked) to Chatsworth ('Palace of the Peak', fine collection of pictures, books and furniture, extensive gardens with celebrated cascade and fountains, wooded park on the banks of the River Derwent). In the evening it will be possible to see the illuminations in the gardens and on the River Derwent.

**Thursday** Leave mid morning allowing time to see Matlock (among woodland and hills, where the River Derwent flows through a gorge, dramatic views of the peaks and crags), Tissington (attractive village with a Tudor hall), Dove-dale (beautiful wooded ravine threaded by the River Dove and accessible on foot), Ashbourne (lunch stop, renowned for its gingerbread), tea stop en route, home approximately 2030.



Derbyshire Dales

## Southport (centred holiday)

**8 days £84.00**

Single room supplement £3.50

**Saturday 24th September**

*Including seven nights dinner bed and breakfast at the Prince of Wales Hotel\*\*\*\*, Southport (most rooms with private bath).*

**Saturday 24th** Epsom 0930 (other points Group Q, inside back page), Lichfield (lunch stop, cathedral with three spires known as 'Ladies of the Vale', birthplace of Samuel Johnson in the market place), arrive in Southport late afternoon.

**Sunday to Friday** Southport is a quiet family resort with broad golden sands, beautiful gardens, a Venetian-style boating lake, a pier, amusement park and Lord Street 'the shopping centre of the North' with its fountains and arcades.

During our stay we will visit the Yorkshire Dales, Liverpool and Chester, the English Lakes and Blackpool Illuminations.

**Saturday 1st October** Leave after breakfast, Knutsford (coffee stop, where Mrs. Gaskell lived), Buxton, Bakewell (where the original tarts were made), Matlock (lunch stop, among woodland and hills, where the River Derwent flows through a gorge, dramatic views of the peaks and crags), home approximately 2015.

## Cardiff

**3 days £31.00**

Single room supplement £2.00

**Friday 20th May**

*Including two nights dinner bed and breakfast at the Royal Hotel\*\*\*, Cardiff (all rooms with private bath).*

**Friday** Epsom 0830 (other points Group N, inside back page), Marlborough (coffee stop, historic town with a very wide main street), Bath (lunch stop, Roman city with the only natural hot springs in Britain, many fine Georgian buildings), Severn Bridge, Cardiff.

**Saturday** Morning free in Cardiff - time for shopping, visiting the Castle or the National Museum of Wales. Afternoon excursion to Llandaff Cathedral (twin towers, notable sculpture by Epstein, interesting monuments) and the

Welsh Folk Museum (centuries old buildings re-erected on site, Welsh teas available).

**Sunday** Leave after breakfast, Monmouth, Forest of Dean, Gloucester, Cheltenham (lunch stop, once a popular spa, many fine Regency houses), via Cotswold villages (many picturesque buildings made of local stone), Oxford (tea stop, University town with over thirty colleges, on the rivers Cherwell and Thames), Chiltern Hills, Thames Valley, home approximately 2000.

# Llandrindod Wells

**3 days £27.50**

Single room supplement £2.00  
Supplement per person for room  
with private bath £2.50

Friday 25th March  
Saturday 28th May

*Including two nights dinner  
bed and breakfast at the Glen  
Usk Hotel\*\*, Llandrindod  
Wells.*

**First day** Epsom 0730 (other points Group G, inside back page), via the Thames Valley and Chiltern Hills to Woodstock (coffee stop, nearby is Blenheim Palace where Sir Winston Churchill was born), Cotswold Hills (once the centre of wool-grazing), Vale of Evesham (centre of fruit and vegetable growing), Great Malvern (lunch stop, inland resort on the slopes of the Malvern Hills), Leominster (many black and white houses), Llandrindod Wells.

**Second day** Llandrindod Wells is situated at an altitude of over 1000 feet: it is a well known spa with medicinal springs. There is a short day tour

to the Elan Valley (chain of lakes built as reservoirs, beautiful hill scenery) and Devil's Bridge (wild gorge and a series of spectacular waterfalls, three bridges built above one another).

**Third day** Builth Wells, view of the Black Mountains, Monmouth (lunch stop, interesting bridge with unique gatehouse, remains of a castle, statue of Rolls the pioneer motorist and airman), along the Wye Valley passing Tintern Abbey, across the Severn Bridge, Marlborough (tea stop, broad High Street with many old houses and inns), home approximately 1830.

# Tenby (centred holiday)

**8 days  
from £64.50**

Saturday 21st May

*Including seven nights dinner  
bed and breakfast at the Royal  
Gate House Hotel\*\*\* or Rich-  
mond Hotel, Tenby.*

**Saturday 21st** Epsom 0730 (other points Group G, inside back page), via the Severn Bridge to Cardiff (lunch stop in the capital of Wales, time for a little shopping and sightseeing), Carmarthen (tea shop, remains of a Norman castle), arrive early evening in Tenby.

**Sunday to Friday** Tenby is an attractive South Wales resort with a colourful harbour, beautiful sands, ancient walls and gateways. Caldy Island can be reached by launch from Tenby: it has an ancient priory church and a modern monastery where perfumes produced by the Cistercian monks are on sale. During our stay we will visit St. David's (Britain's smallest cathedral city, fine cliffs and bays), Laugharne (boathouse where Dylan Thomas lived and worked) and Cenarth (fine waterfalls, old four arched bridge, coracles on the River Teifi).

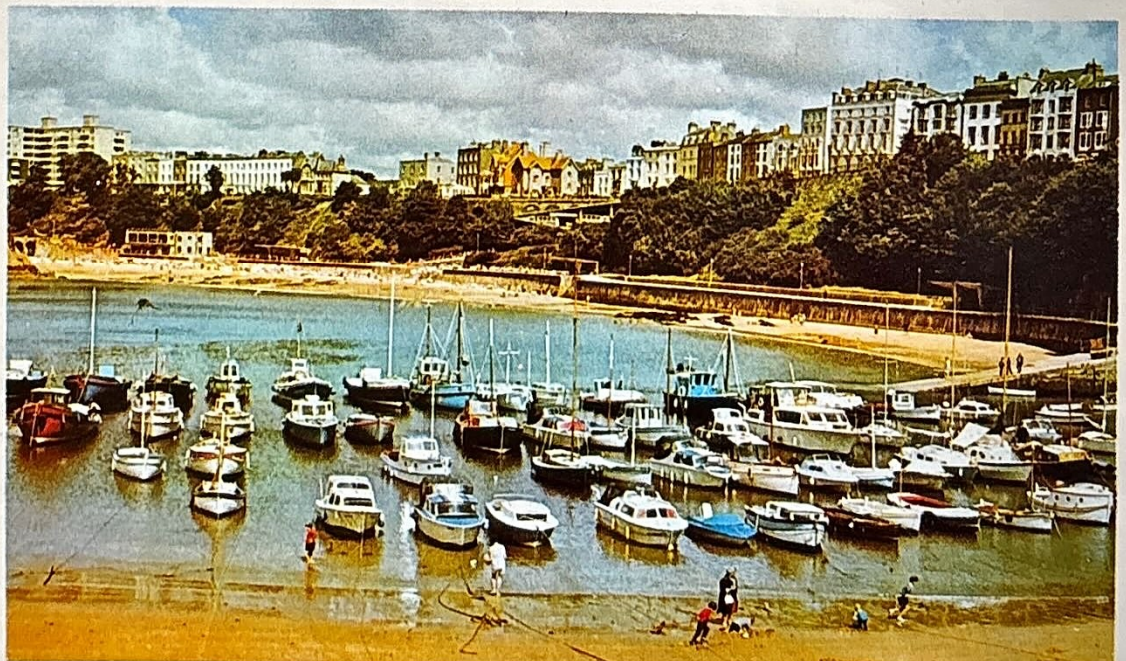
**Saturday 28th** Carmarthen (coffee shop), Llandeilo (in a delightful vale), Brecon (lunch break, interesting cathedral, many old buildings),

Brecon Beacons National Park, Monmouth, along the Wye Valley past Tintern Abbey, across the Severn Bridge, Chippenham, Marlborough, home approximately 2000.

**Royal Gate House Hotel\*\*\*** Overlooking the sands and the sea; close to the town centre, the walls and the Merchant's House; licensed, lift to all floors, night porter, television lounge.

**Richmond Hotel** Private hotel overlooking the North Bay, cliff garden and lawn, private approach to the beach, within ten minutes walk of the south shore and shopping centre, spacious lounge and dining room overlooking the sea.

	Royal Gate House	Richmond
Basic charge	£90.00	£64.50
Single room supplement	£3.50	£3.50
Supplement per person for room with private bath	£11.50	—



Tenby Harbour

# Wales

## 4 days £46.50

Single room supplement £2.50

Thursday 9th June

Friday 15th July

Thursday 4th August

Thursday 8th September

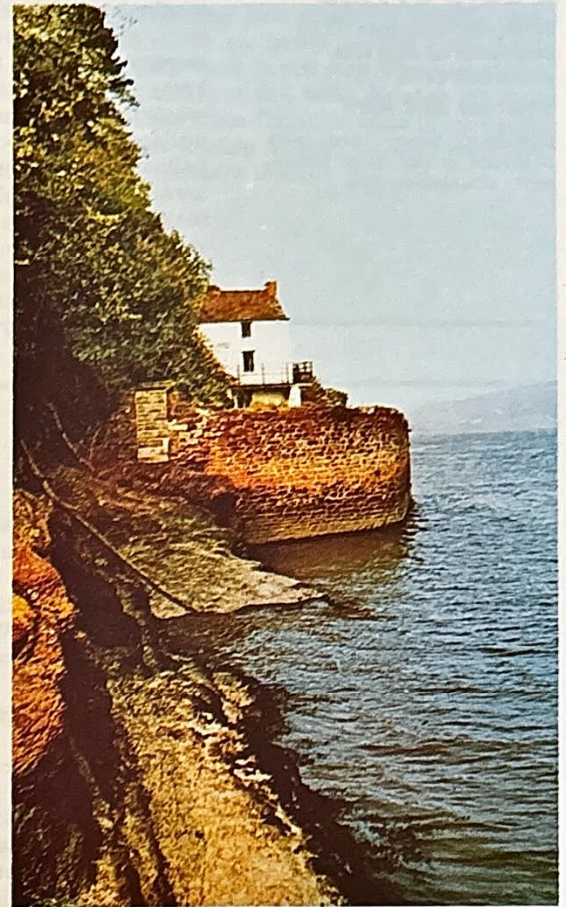
*Including three nights dinner bed and breakfast – first night Hand Hotel\*\*\*, Llangollen; second and third nights Stradey Park Hotel\*\*\*, Llanelli (all rooms with private bath).*

**First day** Epsom 0730 (other points Group G, inside back page), Lichfield (lunch stop, cathedral with three spires, Dr. Johnson's home in the market square), Chester (tea stop, Roman walls, timbered buildings including galleried shops, fine cathedral), via the Horseshoe Pass to Llangollen (surrounded by woods, meadows and mountains; in a vale; hotel by the River Dee).

**Second day** Passing Bala Lake and the Cambrian Mountains, Dinas Mawddwy (coffee stop, visit a woollen mill), tour of the Elan Valley (chain of lakes built as reservoirs, beautiful hill scenery), Rhayader (lunch stop), Builth Wells (inland resort on the River Wye), Llandeilo (in a delightful vale), Llanelli (hotel situated in an elevated position with views over Llanelli and out to the Gower Peninsula).

**Third day** Carmarthen (ruins of a Norman castle), Laugharne (see the boat house where Dylan Thomas lived and worked), St. David's (smallest cathedral city in Britain, fine cliffs and bays), Tenby (colourful harbour and beautiful sands, ancient walls and gateways, time to visit Caldy Island with its ancient priory church and monastery).

**Fourth day** Through the Brecon Beacons National Park (coffee stop in Brecon), Symond's Yat (lunch stop, where the River Wye winds its way through a wooded gorge, optional boat excursion), along the Wye Valley past Tintern Abbey, across the Severn Bridge, via Wiltshire and Berkshire, home approximately 2030.



*Dylan Thomas' House, Laugharne*

## Wye Valley

### 2 days £18.00

Single room supplement £1.50  
Supplement per person for room with private bath £1.25

Saturday 23rd July

*Including dinner bed and breakfast at the Chase Hotel\*\*\*, Ross-on-Wye.*

**Saturday** Epsom 0830 (other points Group N, inside back page), Marlborough (coffee stop, broad High Street with many old houses and inns), Bath (lunch stop, ancient Roman city with the only natural hot springs in Britain, many fine Georgian buildings), across the Severn Bridge, along the Wye Valley past Tintern Abbey (set in a meadow overlooked by wooded hills, Monmouth, Symond's Yat (tea stop, where the Wye flows through a narrow gorge, in a richly wooded setting, time for an excursion on the river), Ross-on-Wye).

**Sunday** A little time to look around Ross-on-Wye (lovely old market town overlooking a horseshoe bend in the River Wye, fine views of the Welsh hills). Leave mid morning – Gloucester, Cheltenham, Bourton-on-the-Water (lunch stop, picturesque Cotswold village on the River Windrush with stone houses, miniature bridges and riverside greens), Henley-on-Thames (tea stop, Thames resort famous for its regatta, many Georgian houses), home approximately 1945.

## Malvern Hills

### 2 days £18.00

Single room supplement £1.50

Saturday 13th August

*Including dinner bed and breakfast at the Abbey Hotel\*\*\*, Great Malvern (all rooms with private bath).*

**Saturday** Epsom 0830 (other points Group N, inside back page), Windsor, Maidenhead, Henley-on-Thames, Woodstock (coffee stop, near Blenheim Palace where Sir Winston Churchill was born), Chipping Norton, Moreton-in-Marsh, Broadway (lunch stop, picturesque Cotswold village with numerous old houses), Evesham, Worcester (tea stop, time to visit the cathedral), Great Malvern (inland resort on the slopes of the Malvern Hills, dominated by the Worcestershire Beacon).

**Sunday** Short drive around the Malvern Hills, Ledbury (short stop, many black and white houses and inns), Gloucester (lunch stop, former Roman city, fine cathedral, many Georgian houses, connected with the sea by canal), Cotswold Hills, Cirencester, Vale of White Horse, Wallingford (tea stop, Thames resort, used to be a ford across the river before the bridge was constructed), home approximately 1915.

# Cotswolds

**2 days £17.50**

Single room supplement £1.50

Supplement for room with private bath £2.50

**Saturday 30th April**

*Including dinner bed and breakfast at the Hotel Majestic\*\*, Cheltenham Spa.*

**Saturday** Epsom 0830 (other points Group N, inside back page), Henley-on-Thames (coffee stop, pleasant riverside resort famous for its regatta), Chiltern Hills, Witney (noted for blankets), Cotswolds (the area was once a centre of wool-grazing, many picturesque buildings and walls made of locally quarried silver-grey or yellow stone), Bourton-on-the-Water (lunch stop, lovely old Cotswold village on the River Windrush, many stone houses, miniature bridges, riverside greens, model village, bird zoo gardens), Stow-on-the-Wold (quiet hilltop Cotswold town, market square with a cross and stocks), Broadway, Cheltenham Spa (well laid

out town with tree-lined walks, beautiful parks and boulevards; mineral springs discovered in the 18th century; many fine Regency houses).

**Sunday** Cirencester (Cotswold market town and hunting centre), Vale of White Horse (view of a prehistoric 'White House' cut into the slopes of White Horse Hill), Abingdon (lunch stop, ancient wool and marketing centre, many Georgian houses, on the Thames), Windsor (tea stop, largest inhabited castle in the world on a hill overlooking the River Thames), Runnymede (meadow by the Thames where King John signed the Magna Carta), home approximately 1915.

# Stratford-upon-Avon

**3 days £32.00**

Single room supplement £4.50

**Friday 21st October**

*Including two nights dinner bed and breakfast at the Alveston Manor Hotel\*\*\*, Stratford-upon-Avon (all rooms with private bath).*

**Friday** Epsom 0830 (other points Group N, inside back page), Henley-on-Thames (coffee stop, picturesque Thameside resort famous for its regatta), Oxford (lunch stop, time to see some of the colleges), Woodstock (passing Blenheim Palace), Stratford-upon-Avon.

**Saturday** Morning free in Stratford (lovely old market town rich in half-timbered houses and memories of Shakespeare; Holy Church where he was baptised and buried, restored house where he lived, Grammar School where he was educated and New Place where he died; Royal Shakespeare Theatre; boats on the River Avon). Afternoon excursion to Warwick (picturesque town with interesting houses and a famous

castle) and Coventry (new cathedral with works by many of Britain's finest artists and craftsmen, modern traffic-free shopping precincts).

**Sunday** Morning excursion to Ann Hathaway's Cottage in Shuttery (pretty thatched cottage set in an old English garden, where Ann Hathaway lived before marrying Shakespeare), leave Stratford after lunch, Banbury (famous for Banbury Cakes and the nursery rhyme 'Ride a cock horse to Banbury Cross'), Aylesbury (tea shop, many narrow alleyways, old houses and courtyards and timbered inns in the market square), Chiltern Hills, Thames Valley, home approximately 2015.



Anne Hathaway's Cottage, Shuttery

# Cambridge

**2 days £19.00**

Single room supplement £2.75

**Saturday 5th November**

*Including dinner bed and breakfast at the Gonville Hotel\*\*\*, Cambridge (all rooms with private bath).*

**Saturday** Epsom 0830 (other points Group P, inside back page), Tower Bridge, Epping Forest (much fine woodland scenery), Roding Villages (picturesque villages in the Roding Valley), Great Dunmow, Thaxted (many picturesque plastered and half-timbered houses), Cambridge (afternoon free for shopping and sightseeing – college courtyards, chapels and dining halls, lawns and gardens sloping down to the River Cam, many fine bridges).

**Sunday** Optional morning excursion to Ely (on an island till the Fens were drained over two hundred years ago, fine cathedral), Newmarket (centre of British horse racing and the Jockey Club). Return direct, tea stop en route, home approximately 1800.

## Lincoln

### 2 days £18.00

Single room supplement £1.50  
Supplement per person for room  
with bath or shower £1.25

**Saturday 15th October**

*Including dinner bed and  
breakfast at the Grand Hotel\*\*,  
Lincoln.*

**Saturday** Epsom 0800 (other points Group K, inside back page), Stamford (lunch stop, beautiful stone built market town with many interesting old houses), arrive in Lincoln mid afternoon (majestic triple-towered cathedral built after an earthquake destroyed the old church, steep cobbled streets with medieval houses, many Roman remains including an arch across the main road and a canal which is still in use).

**Sunday** Leave after breakfast, Ely (coffee stop, fine cathedral, on an island till the Fens were drained), Cambridge (lunch stop, time to explore some of the colleges and walk through the gardens beside the River Cam), through picturesque villages in the Roding Valley, tea stop en route, home approximately 1830.

## Norwich and Norfolk Broads

### 3 days £35.50

Single room supplement £2.75

**Wednesday 10th August**

*Including two nights dinner  
bed and breakfast at the Maid's  
Head Hotel, Norwich (all rooms  
with private bath) and an after-  
noon cruise on the Norfolk  
Broads.*

**Wednesday** Epsom 0800 (other points Group K, inside back page), Tower Bridge, through the Epping Forest (fine woodland scenery, coffee stop Epping), Roding Villages (picturesque villages in the Roding Valley), Great Dunmow, Lavenham (short stop, one of the most picturesque small towns in England, rich in ancient timbered houses), Bury St. Edmunds (lunch stop, fine cathedral, ruins of an'abbey set in beautiful gardens), Norwich.

**Thursday** Morning free in Norwich – time to see the cathedral, the quaint byways and old gabled

houses, the large open-air vegetable market and the modern traffic-free shopping precincts. Afternoon cruise on the Norfolk Broads from Wroxham – through Wroxham and Salhouse broads to Horning Ferry and return.

**Friday** Morning guided walking tour of Norwich, leave early afternoon, Thetford, Newmarket (centre of British horse racing), Cambridge (tea stop, time to see the colleges and go for a walk in the gardens by the River Cam), home approximately 2000.

## Bath

### 3 days £32.00

Single room supplement £2.00  
Supplement per person for room  
with private bath £1.75

**Friday 19th August**

*Including two nights dinner  
bed and breakfast at Pratt's  
Hotel\*\*\*, Bath.*

**Friday** Epsom 0830 (other points Group N, inside back page), Winchester (coffee break in England's old capital, cathedral the longest Gothic church in Europe), Salisbury (lunch stop, majestic cathedral with the tallest spire in England), Bath.

**Saturday** Bath is an ancient Roman city with the only natural hot springs in Britain. There will be time to see the Roman Baths and Pump Room, many of the fine Georgian buildings and Bath Abbey. In the afternoon there is an optional excursion to the American Museum at Claverton Manor which portrays American life at the time of the Revolution. Special teas including old American cookies and home-made breads and jams are available in the House.

**Sunday** Wells (lunch stop, beautiful cathedral with a medieval mechanical clock and hundreds of statues on the west front, in the moat of the Bishop's Palace swans ring a bell for their meals), Stonehenge (short stop, circle of pre-historic stones up to 21 feet high), Amesbury (tea stop), home approximately 2000.



Bath Abbey and the Great Roman Bath

# Bournemouth

## 3 days £29.00

Single room supplement £1.00  
Supplement per person for room  
with private bath £1.50

Fridays 18th March and  
11th November

*Including full board at the  
Pinehurst Hotel\*\*, Bourn-  
mouth from lunch on Friday to  
lunch on Sunday (all double  
and twin rooms with private  
shower).*

**Friday** Epsom 0830 (other points Group N, inside back page), Winchester (coffee stop, England's old capital, fine cathedral), arrive in Bournemouth in time for lunch. Afternoon excursion to Poole (one of the finest natural harbours in the world and a fishing centre, time to visit Poole Pottery).

**Saturday** Morning free in Bournemouth – warm resort amidst gardens and pines, picturesque chimes, fine shops. Afternoon tour – by chain

ferry to the Isle of Purbeck, Swanage (tea stop, pleasant seaside resort with sandy bays and rugged white cliffs), Wareham.

**Sunday** Morning free – time to go for a walk through the Pavilion Gardens or along the promenade, last look at the sea. Leave after lunch and return via Christchurch and the New Forest stopping for tea en route, home approximately 1800.

# Cornwall (centred in Mullion)

## 8 days £97.50

Single room supplement £3.50  
Supplement per person for room  
with private bath £11.50

Saturday 7th May

*Including seven nights dinner  
bed and breakfast at the Poldhu  
Hotel\*\*\*, Mullion.*

**Saturday 7th** Epsom 0700 (other points Group C, inside back page), Exeter (lunch stop, magnificent cathedral), via Dartmoor and Bodmin Moor to Penzance (short stop), Mullion.

**Sunday to Friday** There are many places to visit in the immediate locality of the Poldhu Hotel – the Lizard headland with its rugged grandeur, Mullion with its narrow streets and quaint old world harbour and Helford Estuary set amidst its wooded slopes. During our stay we will visit Land's End, St. Ives, St. Michael's Mount, Truro, Falmouth and a Cornish tin mine. It is possible to

go on a day excursion to the Scilly Isles by sea or air from Penzance.

**Saturday 14th** Leave after breakfast, Penzance (short stop), Exeter (lunch stop), tea stop en route, home approximately 2045.

**Poldhu Hotel\*\*\*, Mullion** Magnificent views across the sea, coast and country; sheltered swimming pool; superb setting of unspoilt natural beauty, bathing in Poldhu Cove, tennis on the hotel's own hard court, golf on a course above the beach, billiards room, three lounges, cocktail bar.

# Devon and Cornwall

## 4 days £42.00

Single room supplement £2.50  
Supplement per person for room  
with private bath £1.75

Thursdays 16th June and  
18th August

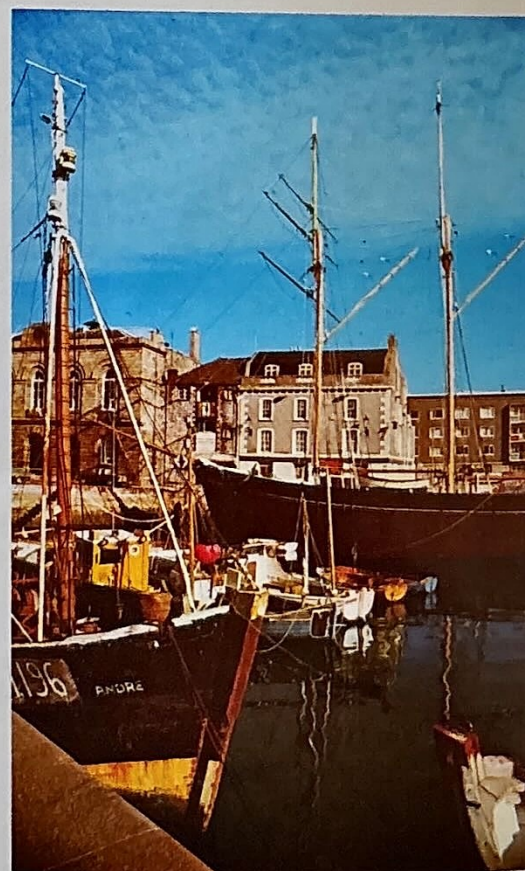
*Including three nights dinner  
bed and breakfast at the  
Continental Hotel\*\*\*, Plymouth.*

**Thursday** Epsom 0800 (other points Group L, inside back page), Salisbury Plain, Stonehenge (short stop), Mere (lunch stop, attractive village where Charles II came in disguise after the Battle of Worcester), Plymouth.

**Friday** Leisurely drive via the Tamar Bridge into Cornwall – Looe (two fishing towns with narrow winding streets and a pillory) and Polperro (picturesque fishing village and old smugglers haunt with quaint houses, rugged coast scenery).

**Saturday** Time for shopping and sightseeing in Plymouth (historic seaport and Royal Navy base; from here the Mayflower sailed to America; Sir Francis Drake finished his game of bowls before sailing to fight in the Spanish Armada; old town still lives on in the Barbican, a picturesque area of narrow streets, Elizabethan houses and fishing quays; Plymouth Hoe, perhaps the finest promenade in the country overlooking the Plymouth Sound and Cornish coast, outstanding new shopping centre). Optional excursion to Dartmoor stopping at the Dartmoor Inn where you can obtain lunch.

**Sunday** Torquay (coffee break, pretty fishing harbour, beautiful gardens with palm trees and sub-tropical plants), Exeter (lunch stop and time to visit the Cathedral), Lyme Regis (colourful cottages, wonderful cliff scenery), Dorchester (tea shop, stone built market town, many associations with Thomas Hardy), home approximately 2100.



The Barbican, Plymouth

# Exeter and Torquay

## 3 days £34.50

Supplement for single room with bath or shower £2.00

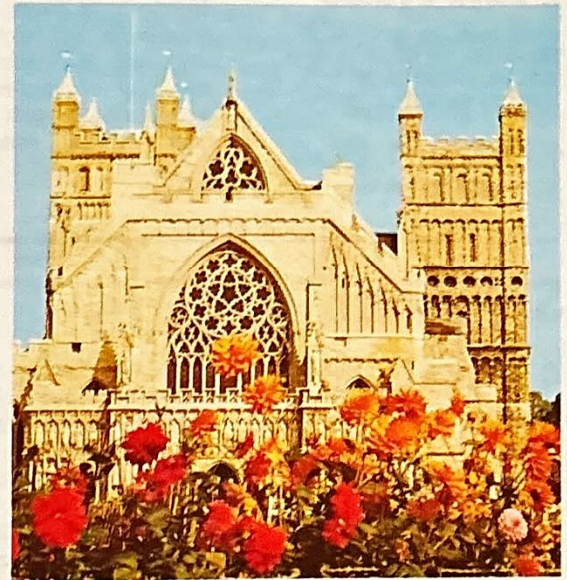
Friday 28th October

Including two nights dinner bed and breakfast at the Royal Clarence Hotel\*\*\*, Exeter (all twin rooms with private bath or shower).

**Friday** Epsom 0800 (other points Group L, inside back page), Winchester (coffee stop, fine cathedral with many famous shrines), Salisbury (lunch stop, cathedral with the tallest spire in England), Yeovil (tea stop), Exeter.

**Saturday** Morning free in Exeter (magnificent cathedral with beautiful carving in wood and stone, fine shopping centre). Afternoon tour – Buckfast Abbey (built by monks in this century, tonic wine and honey for sale), Torquay (tea stop, on the South Devon Riviera, colourful harbour, beautiful gardens with sub-tropical plants and palm trees), return via the coastal road.

**Sunday** Lyme Regis (colourful cottages, wonderful cliff scenery), Dorchester (coffee stop, stone built market town, many associations with Thomas Hardy), Bournemouth (lunch stop, warm resort amidst gardens and pines, picturesque chimes), New Forest, tea stop en route, home approximately 1900.



Exeter Cathedral

# Ilfracombe

## 4 days £41.00

Single room supplement £2.50  
Supplement per person for room with private bath £4.00

Wednesday  
28th September

Including full board at the Dilkhusa Grand Hotel\*\*\*, Ilfracombe from dinner on Wednesday to lunch on Saturday.

**Wednesday** Epsom 0800 (other points Group L, inside back page), Winchester (coffee break in England's old capital), Salisbury, Mere (lunch stop, where Charles II came in disguise after the Battle of Worcester), Dunster (tea stop, highly picturesque village with many old houses and the Yarn Market, impressive castle on a hill, water-wheel with a double wheel), Ilfracombe.

**Thursday** Morning free to explore Ilfracombe – quaint old harbour, colourful gardens, warmed

by gentle westerly breezes from the Gulf Stream. Afternoon excursion to Exmoor.

**Friday** Morning free – pleasant walks to Capstone and Lantern Hills (fine coast scenery). Afternoon excursion – via Barnstaple and Bideford to Clovelly (tea stop, picturesque cliff village and harbour with fishing boats).

**Saturday** Morning free for a last glimpse of the sea, leave after lunch, tea stop en route, home approximately 2030.

# Isles of Scilly

## 8 days £119.50

Single room supplement £3.50  
Supplement per person for room with private bath £12.00

Saturday 7th May

Including return flight by helicopter from Penzance to St. Mary's and full board at the Atlantic Hotel\*\*, St. Mary's from dinner on Saturday 7th to breakfast on Saturday 14th.

**Saturday 7th** Epsom 0700 (other points Group C, inside back page), Exeter (lunch stop, magnificent cathedral), via Dartmoor and Bodmin Moor to Penzance, British Airways helicopter to St. Mary's, arrive at the Atlantic Hotel early evening.

**Scilly Isles** The Scilly Isles are clustered almost thirty miles south west of Land's End: they are steeped in history and have a charm that is unforgettable. The islands have a mild climate and are a paradise for wild flowers, birds and marine life. St. Mary's is the largest of the inhabited islands. The hotel is situated directly overlooking the harbour from which launches make

daily trips to Tresco with its world famous sub tropical gardens, St. Martin's, St. Agnes, Bruher and many other islands.

**Saturday 14th** Leave after breakfast, helicopter flight to Penzance, Exeter (lunch stop), tea stop en route, home approximately 2045.

**Atlantic Hotel\*\***, St. Mary's Delightful rambling old inn which has been modernised and furnished without losing its character, Cocktail Bar and Shipwreck Bar lead out on to a sun patio with steps on to the beach, residents' lounge, television lounge, sun lounge.

# Lynton

**2 days £16.50**

Single room supplement £1.50  
Supplement per person for room  
with private bath £1.25

**Sunday 28th August**

*Including dinner bed and  
breakfast at the Valley of the  
Rocks Hotel\*\*, Lynton.*

**Sunday** Epsom 0800 (other points Group L, inside back page), Winchester (coffee break in England's old capital), Salisbury, Mere (lunch stop, where Charles II came in disguise after the Battle of Worcester), Dunster (tea stop, picturesque village with many old houses, impressive castle on a hill, waterwheel with a double wheel), Lynton.

**Monday** A little time to explore Lynton (500 feet above Lynmouth on wooded cliffs and connected by a cliff railway), leave mid morning, Ilfracombe (lunch stop, quaint old harbour, colourful gardens), return via Exmoor and Salisbury Plain stopping en route for tea, home approximately 2130.

# Sidmouth

**4 days £48.00**

Single room supplement £5.00  
Supplement per person for room  
with private bath £5.00

**Friday 8th April**

**Tuesday 18th October**

*Including full board at the  
Fortfield Hotel\*\*\*, Sidmouth  
from dinner on the first day to  
lunch on the fourth day.*

**First day** Epsom 0800 (other points Group L, inside back page), Winchester (coffee stop in the old capital of England), New Forest, Alner ('World's End' inn where Montgomery planned the 'D' day landings), Tolpuddle (where six labourers were transported for demanding higher wages), Dorchester (lunch stop, busy market town, many associations with Thomas Hardy), Sidmouth.

**Second day** Morning free in Sidmouth – quiet resort on the South Devon coast, flanked by red and white cliffs and sheltered between two tree-covered hills giving a mild climate all the year round, the resort preserves the natural beauty of the local countryside, many pleasant walks.

Afternoon excursion to Exeter – time to visit the Cathedral (beautiful carving in wood and stone) and do a little shopping.

**Third day** Morning free. Afternoon excursion – Buckfast Abbey (built by monks in this century, tonic wine and honey for sale) and Torquay (on the South Devon Riviera, colourful harbour, beautiful gardens with palm trees and subtropical plants).

**Fourth day** Morning free for a last look at the sea, leave after lunch, return via Yeovil, Shaftesbury (abbey ruins) and Salisbury making a tea stop en route, home approximately 2100.



Fortfield Hotel, Sidmouth

# Sidmouth at Christmas

**5 days £93.50**

Single room supplement £6.75  
Supplement per person for room  
with private bath £6.75

**Friday 23rd December**

*Including full board and Christmas programme at the Fortfield Hotel\*\*\*, Sidmouth from tea on Friday to lunch on Tuesday.*

**Friday** Epsom 0800 (other points Group L, inside back page), Winchester (coffee stop in England's old capital), Salisbury (lunch stop, cathedral with the tallest spire in England), Shaftesbury, Yeovil, Sidmouth.

**Christmas Eve** Time for shopping and sight-seeing. After dinner there is dancing till midnight.

**Christmas Day** Special traditional cold buffet for lunch, afternoon tea with Christmas cake, traditional Christmas dinner by candlelight, dancing till midnight.

**Boxing Day** Optional morning excursion to Woodbury Common to visit the meet of the East Devon Foxhounds, dancing past midnight.

**Tuesday** Morning free, leave after lunch, return via Dorchester and the New Forest, home approximately 1900.

**Fortfield Hotel\*\*\*** Overlooking the sea and close to the town centre, central heating throughout, two lounges facing the sea and gardens, colour television room, Connaught Bar, lift to both floors, solarium (extra charge).

# Torquay at Christmas

**4 days £73.00**

Single room supplement £2.50

**Saturday 24th December**

*Including full board and Christmas programme at the Abbey Court Hotel, Torquay from dinner on Christmas Eve to breakfast on Tuesday.*

**Christmas Eve** Epsom 0800 (other points Group L, inside back page), Winchester, Stockbridge (coffee stop, Sherborne (lunch stop), Torquay.

**Christmas Day and Boxing Day** Full Christmas programme at the Abbey Court Hotel including a visit to a pantomime and an excursion.

**Tuesday** Leave after breakfast, Exeter (coffee break and a little time to see the Cathedral), Dorchester (lunch stop, many associations with Thomas Hardy, Judge Jeffery's old lodgings), home approximately 1815.

## Torquay

**4 days £47.50**

Single room supplement £2.50

**Tuesdays 24th May and 4th October**

*Including full board at the Abbey Court Hotel, Torquay from dinner on Tuesday to breakfast on Friday.*

**Tuesday** Epsom 0800 (other points Group L, inside back page), Winchester, Stockbridge (coffee stop), Wilton, Sherborne (lunch stop, mellow stone built town with narrow winding streets, ancient abbey church, castle ruins, famous school), Torquay.

**Wednesday** Morning tour – Totnes (old town with ruins of a Norman castle), Buckfast Abbey (built by Benedictine monks this century, tonic wine and honey for sale), Widecombe-in-the-Moor (on Dartmoor with lofty moors rising all round, famous song 'Widecombe Fair'). Afternoon free in Torquay – on the South Devon Riviera, red cliffs, eleven miles of coastline,

colourful harbour, beautiful gardens with palm trees and sub-tropical plants, famous yachting centre.

**Thursday** Morning excursion – along the coast road and then by ferry across the River Dart to Dartmouth (coffee stop, port and holiday resort beautifully situated on the estuary, Tudor castle and old custom house). Afternoon at leisure.

**Friday** Leave mid morning, Exeter (lunch stop, time to visit the cathedral), Dorchester (tea stop, many associations with Thomas Hardy, Judge Jeffrey's old lodgings), home approximately 2015.



Torquay

## Torquay (centred holiday)

**8 days £76.50**

Single room supplement £3.50

**Saturday 11th June**

*Including full board at the Abbey Court Hotel, Torquay from dinner on Saturday 11th to breakfast on Saturday 18th June.*

**Saturday 11th** Epsom 0800 (other points Group L, inside back page), Winchester, Stockbridge (coffee stop), Sherborne (lunch stop, mellow stone built town with narrow winding streets, ancient abbey church, castle ruins, famous school), Torquay.

**Torquay** Torquay is on the South Devon Riviera. It has red cliffs, eleven miles of coastline, a colourful harbour and beautiful gardens with

palm trees and sub tropical plants. During our stay we shall visit Dartmoor, Salcombe, Buckfast Abbey and many other beauty spots.

**Saturday 18th** Leave mid morning, Exeter (lunch stop, time to visit the Cathedral), Dorchester (tea stop, many associations with Thomas Hardy, Judge Jeffrey's old lodgings), home approximately 2015.

# Eastbourne

## 3 days £28.00

Single room supplement £2.00  
Supplement per person for room  
with private bath £2.00

**Tuesday 2nd August**

*Including full board at the Mansion Hotel\*\*\*, Eastbourne from lunch on Tuesday to lunch on Thursday.*

**Tuesday** Epsom 0930 (other points Group R, inside back page), via the Ashdown Forest to Eastbourne arriving at the Mansion Hotel in time for lunch.

**Wednesday** At leisure in Eastbourne.

**Thursday** Leave late afternoon, home approximately 2015.

**Eastbourne and Mansion Hotel** See Eastbourne (8 days).

# Eastbourne (centred holiday)

## 8 days £79.00

Single room supplement £3.50  
Supplement per person for rooms  
with private bath £3.50

**Saturdays 18th June and  
17th September**

*Including full board at the Mansion Hotel\*\*\*, Eastbourne from lunch on the first day to lunch on the last day.*

**First day** Epsom 0930 (other points Group R, inside back page), via the Ashdown Forest to Eastbourne arriving at the Mansion Hotel in time for lunch.

**Eastbourne** Eastbourne holds the record for hours of sunshine in Great Britain. It has a long esplanade with a bandstand, a pier, promenades, terraces, lawns and flowers, beautiful parks and gardens and the Lifeboat Museum. Nearby is Beachy Head, the highest cliff on the south coast, and not far away the famous lighthouse. There

are three theatres, cinemas and facilities for most sports.

**Last day** Leave late afternoon, home approximately 2015.

**Mansion Hotel\*\*\*** One of Eastbourne's best known hotels with a tradition of friendly service and an excellent position looking over the Grand Parade towards the sea, fully licensed, night porter, colour television.

# Rye

## 2 days £19.00

Single room supplement £1.50  
Supplement per person for room  
with private bath or shower £1.50

**Saturday 14th May**

*Including four-course dinner, bed and breakfast at the Mermaid Inn\*\*\*, Rye.*

**Saturday** Epsom 0930 (other points Group R, inside back page), via the Woldingham Heights to Westerham (coffee break, associations with Sir Winston Churchill and General Wolfe), along the 'Blossom' route to Tunbridge Wells (lunch stop, time to drink the spa water and visit the 'Pantiles' a picturesque parade of shops), Goudhurst, Sissinghurst, Tenterden (tea stop, pleasant little Weald town with a number of interesting old houses), Isle of Oxney, Rye (the Mermaid Inn was rebuilt in 1420 and is one of the oldest inns in England).

**Sunday** A little time to explore Rye – oldest of the original Cinque Ports, receded two miles inland, many old timbered houses and smugglers haunts in the narrow cobbled streets. Mid morning departure for Hastings (lunch stop, ruins of a Norman castle, fish on sale in the harbour of the old town), Sheffield Park (tea stop, time to visit the Gardens with their magnificent display of rhododendrons or the Bluebell Railway), home approximately 1930.



Rye, Sussex

## NEW YEAR

Details of a 'New Year' holiday available on request

## Isle of Wight (Bonchurch)

**8 days £58.50**

Single room supplement £4.25

**Saturday 3rd September**

*Including ferry fares and seven nights dinner bed and breakfast at East Dene, Bonchurch.*

**Saturday 3rd** Epsom 0730 (other points Group F, inside back page), direct to Southampton, Red Funnel Steamer to Cowes, coach to East Dene.

**Bonchurch** Bonchurch is situated in the most sheltered part of the island and is only a mile from Ventnor where you can enjoy a concert in the Winter Gardens, go to the zoo or visit the theatre. Coach excursions operate to all parts of

the island. We stay in East Dene, a delightful old country house set in beautiful gardens with a putting green and easy access to the beach. There is a social centre for games and dancing.

**Saturday 10th** Leave after breakfast, coach to West Cowes, Red Funnel ferry to Southampton (lunch stop), home approximately 1600.

## Isle of Wight (Shanklin)

**8 days £84.00**

Single room supplement £3.50

**Saturday 3rd September**

*Including ferry fares and seven nights dinner bed and breakfast at the Shanklin Hotel\*\*\*, Shanklin.*

**Saturday 3rd** Epsom 0730 (other points Group F, inside back page), direct to Southampton, Red Funnel Steamer to West Cowes, coach to the Shanklin Hotel.

**Shanklin** Shanklin has a very good sunshine record, sandy beaches and facilities for boating, fishing, riding, water skiing, tennis and golf. Coach excursions operate to all parts of the island from Shanklin and there is a good repertory theatre. The Shanklin Hotel is situated less than 100 yards from the cliff edge yet only three

minutes from the town centre. The hotel commands magnificent views of sea and country. It has colour television and full central heating. There is a well appointed restaurant, luxurious lounge, a spacious cocktail lounge, a fully licensed free house and flat roof with glass enclosed sun lounge. A lift serves all floors.

**Saturday 10th** Leave after breakfast, coach to West Cowes, Red Funnel ferry to Southampton (lunch stop), home approximately 1600.



**Express Services  
Excursions and Tours**

Brochure available

February 1977

**Coach Hire**

12, 33, 41, 51 and 55 seater  
coaches for private hire.

Epsom 25252

### Overnight stops and hotels

	<i>page</i>		<i>page</i>
Alnwick, White Swan	9	Lincoln, Grand	15
Arnhem, Haarhuis	3	Llandrindod Wells, Glen Usk	12
Arrochar, Arrochar	7	Llanelli, Stradey Park	13
Bath, Pratt's	15	Llangollen, Hand	13
Berlin, Plaza	3	Lynton, Valley of the Rocks	18
Bingley, Bankfield	9	Matlock Bath, New Bath	11
Blackpool, Carlton	10	Mullion, Poldhu	16
Bonchurch, East Dene	21	Noordwijk-on-Sea, Clarenwijck	4
Bournemouth, Pinehurst	16	Norwich, Maid's Head	15
Bowness-on-Windermere, Burnside	9	Ostend, Westminster	5
Brussels, Bedford	3	Paris, Astra	5
Cambridge, Gonville	14	Plymouth, Continental	16
Cardiff, Royal	11	Ross-on-Wye, Chase	13
Carlisle, Crown and Mitre	8	Rudesheim, Traube	5
Cheltenham Spa, Majestic	14	Rye, Mermaid	20
Chester, Blossoms	10	St. Helier, Marina	6, 7
Douglas, Sefton	10	St. Mary's, Atlantic	17
Dumfries, County	7	St. Peter Port, Birnam Court	6
Durham, Royal County	7, 8, 9	St. Peter Port, Duke of Richmond	6
Eastbourne, Mansion	20	Shanklin, Shanklin	21
Edinburgh, Esso Crest	7, 8	Sidmouth, Fortfield	18
Exeter, Royal Clarence	17	Southport, Prince of Wales	11
Fort William, West End	8	Stratford-upon-Avon, Alveston Manor	14
Ghent, Park	4	Tenby, Richmond	12
Göthenburg, Scandinavia	4	Tenby, Royal Gate House	12
Great Malvern, Abbey	13	Torquay, Abbey Court	19
Harrogate, Cairn	8	Trier, Merian	3, 5
Liege, de la Couronne	3, 5	York, Abbey Park	9

### Booking form

Tour or holiday \_\_\_\_\_ departing \_\_\_\_\_

Picking up point \_\_\_\_\_ time \_\_\_\_\_

**Accommodation**    single \_\_\_\_\_    double \_\_\_\_\_    twin \_\_\_\_\_

                          single with bath \_\_\_\_\_    double with bath \_\_\_\_\_    twin with bath \_\_\_\_\_

Seat number(s) on coach \_\_\_\_\_

Mr/Mrs/Miss	Initials	Surname	Address

Passport number ('Continental' only) \_\_\_\_\_ date of expiry \_\_\_\_\_

Deposit        £ \_\_\_\_\_        Ticket number \_\_\_\_\_        Balance due \_\_\_\_\_

Full amount    £ \_\_\_\_\_        Ticket number \_\_\_\_\_

I agree to the conditions of booking.

Signature \_\_\_\_\_ date \_\_\_\_\_

### Picking-up Points and Times

	A.	B.	C.	D.	E.	F.	G.	H.	J.	K.	L.	M.	N.	P.	Q.	R.
Ashtead	0550	0620	0710	0705	0720	0740	0720	0735	0750	0750	0810	0820	0840	0820	0920	0920
Banstead	0625	0655	0640	-	0755	0710	-	-	0825	-	0740	0855	0810	-	-	0955
Burgh Heath	-	-	0635	-	-	0705	-	-	-	-	0735	-	0805	-	-	-
Chessington	-	-	-	0735	-	-	0750	0805	-	0820	-	-	-	0850	0950	-
Cobham	0515	0545	0735	-	0645	0805	-	-	0715	-	0835	0745	0905	-	-	0845
Dorking	-	-	-	0635	-	-	0650	0705	-	0720	-	-	-	0750	0850	-
Drift Bridge	0620	0650	0630	-	0750	0700	-	-	0820	-	0730	0850	0800	-	-	0950
<b>Epsom</b>	<b>0600</b>	<b>0630</b>	<b>0700</b>	<b>0715</b>	<b>0730</b>	<b>0730</b>	<b>0730</b>	<b>0745</b>	<b>0800</b>	<b>0800</b>	<b>0800</b>	<b>0830</b>	<b>0830</b>	<b>0830</b>	<b>0930</b>	<b>0930</b>
Ewell	0610	0640	0650	0725	0740	0720	0740	0755	0810	0810	0750	0840	0820	0840	0940	0940
Fetcham	0530	0600	0720	0655	0700	0750	0710	0725	0730	0740	0820	0800	0850	0810	0910	0900
Great Bookham	0535	0605	-	0650	0705	-	0705	0720	0735	0735	-	0805	-	0805	0905	0905
<b>Leatherhead</b>	<b>0545</b>	<b>0615</b>	<b>0715</b>	<b>0700</b>	<b>0715</b>	<b>0745</b>	<b>0715</b>	<b>0730</b>	<b>0745</b>	<b>0745</b>	<b>0815</b>	<b>0815</b>	<b>0845</b>	<b>0815</b>	<b>0915</b>	<b>0915</b>
Oxshott	0510	0540	-	-	0640	-	-	-	0710	-	-	0740	-	-	-	0840
Stoke d'Abernon	0520	0550	0730	-	0650	0800	-	-	0720	-	0830	0750	0900	-	-	0850
West Ewell	0605	0635	0655	0730	0735	0725	0745	0800	0805	0815	0755	0835	0825	0845	0945	0935

**Ashtead, Street Bus Stop**

**Banstead, High Street, Post Office**

**Burgh Heath, Brighton Road Bus Stop**

**Chessington North, opposite Station**

**Cobham, High Street, opposite Fine Fare**

**Dorking, opposite Dorking Halls**

**Drift Bridge, Bus Stop opposite Hotel**

**Epsom, Public Library, Waterloo Road**

**Ewell, Spring Bus Stop**

**Fetcham, Post Office, Cobham Road**

**Great Bookham, Crown or Beckley Parade**

**Leatherhead, opposite Crescent Travel**

**Oxshott, Steels Lane/Kenilworth Avenue**

**Stoke d'Abernon, Plough**

**West Ewell, Bungalow Stores**

**West Ewell, Chessington Road/Green Lanes**

### Conditions of Booking

- Payment** Deposit of £5.00 for tours up to 4 days, balance by 4 weeks before departure. Deposit of £10.00 for tours over 4 days, balance by 4 weeks before departure.
- Refunds** Deposits are non refundable. A cancellation fee of up to 50% will be charged on all bookings cancelled within 4 weeks of departure.
- Fares** Should prices fluctuate, the Company reserves the right to revise the fares advertised in this brochure. Children's fares are available on application.
- Party rates** Party rates are available on request.
- Insurance** Details of personal insurance are available on application.
- Personal effects** Personal effects are carried at owners' risk.
- Luggage labels** Your agent will give you luggage labels when you pay the balance. Please ensure your cases are labelled.
- Smoking** Smokers are kindly requested to consider other passengers and if possible to sit at the back of the coach.
- Animals** No animals may travel on any of the services advertised in this brochure.
- Radios, tape-recorders and musical instruments** Radios, tape-recorders and musical instruments may not be played inside the Company's coaches on any of the tours advertised in this brochure.
- Seat numbers** We cannot guarantee the seat numbers quoted on the Company's tickets.
- Road service licenses** Some of the services advertised in this brochure are awaiting the final approval of the Traffic Commissioners.
- Cancellations and amendments** The Company reserves the right to alter or cancel any of the services advertised in this brochure.
- Inclusive arrangements** The Company only acts as an agent where inclusive arrangements are made - i.e. hotels and other carriers.
- Value added tax and hotel gratuities** Value added tax and gratuities to hotel staff are included on all tours; driver's gratuities are not included.
- Responsibility** This brochure is issued on the sole responsibility of the Tour Operator. It is not issued on behalf of and does not commit the airlines mentioned therein, or any airline whose services are used in the course of the tours.

## SUMMARY

	<i>page</i>		<i>page</i>
<b>March</b>		<b>August (continued)</b>	
Fri 18 Bournemouth (3 days)	16	Sat 6 Chester (3 days)	10
Fri 25 Llandrindod Wells (3 days)	12	Wed 10 Norwich & Norfolk Broads (3 days)	15
<b>April</b>		Fri 12 Kyles of Bute & Loch Lomond (4 days)	7
Fri 1 York (3 days)	9	Sat 13 Malvern Hills (2 days)	13
Tues 5 Holland in Springtime (4 days)	4	Tues 16 Border & Yorkshire Dales (4 days)	9
Fri 8 Sidmouth at Easter (4 days)	18	Thur 18 Devon & Cornwall (4 days)	16
Tues 12 Holland in Springtime (4 days)	4	Gothenburg (5 days)	4
Wed 20 Holland in Springtime (4 days)	4	Fri 19 Grand Tour of Scotland (10 days)	8
Fri 22 Harrogate Flower Show (3 days)	8	Bath (3 days)	15
Sat 30 Cotswolds (2 days)	8	Tues 23 Rhine & Moselle Valleys (4 days)	5
<b>May</b>		Wed 24 Derbyshire Dales (2 days)	11
Sun 1 Jersey (8 days)	6	Sun 28 Lynton (2 days)	18
Sat 7 Cornwall (8 days)	16	<b>September</b>	
Isles of Scilly (8 days)	17	Thur 1 English Lakes (4 days)	9
Sat 14 Rye (2 days)	20	Sat 3 Isle of Wight (8 days)	21
Sun 15 Jersey (8 days)	6	Ostend (8 days)	5
Fri 20 Cardiff (3 days)	11	Ghent & Bruges (2 days)	4
Sat 21 Tenby (8 days)	12	Tues 6 Rhine & Moselle Valleys (4 days)	5
Tues 24 Torquay (4 days)	19	Thur 8 Wales (4 days)	13
Fri 27 Grand Tour of Scotland (10 days)	8	Fri 9 Grand Tour of Scotland (10 days)	8
Sat 28 Llandrindod Wells (3 days)	12	Tues 13 Berlin (5 days)	3
Tues 31 Border & Yorkshire Dales (4 days)	9	Fri 16 Kyles of Bute & Loch Lomond (4 days)	7
<b>June</b>		Sat 17 Eastbourne (8 days)	20
Sat 4 Edinburgh and Trossachs (4 days)	7	Tues 20 Isle of Man (5 days)	10
Thur 9 Wales (4 days)	13	Sat 24 Southport (8 days)	11
Sat 11 Torquay (8 days)	19	Sun 25 Jersey by Sea (8 days)	7
Thur 16 Devon & Cornwall (4 days)	16	Wed 28 Ilfracombe (4 days)	17
Fri 17 Kyles of Bute & Loch Lomond (4 days)	7	Fri 30 York (3 days)	9
Sat 18 Eastbourne (8 days)	20	<b>October</b>	
Fri 24 Grand Tour of Scotland (10 days)	8	Sun 2 Guernsey (8 days)	6
Sat 25 Five Countries (5 days)	3	Tues 4 Torquay (4 days)	19
<b>July</b>		Fri 7 Blackpool Illuminations (3 days)	10
Tues 5 Border & Yorkshire Dales (4 days)	9	Sun 9 Jersey (8 days)	6
Fri 15 Kyles of Bute & Loch Lomond (4 days)	7	Fri 14 Paris (3 days)	5
Wales (4 days)	13	Sat 15 Lincoln (2 days)	15
Fri 22 Grand Tour of Scotland (10 days)	8	Tues 18 Sidmouth (4 days)	18
Sat 23 Wye Valley (2 days)	13	Fri 21 Stratford-upon-Avon (3 days)	14
Tues 26 Brussels and the Ardennes (3 days)	3	Fri 28 Exeter & Torquay (3 days)	17
Thur 28 English Lakes (4 days)	9	<b>November</b>	
<b>August</b>		Sat 5 Cambridge (2 days)	14
Tues 2 Eastbourne (3 days)	20	Fri 11 Bournemouth (3 days)	16
Thur 4 Wales (4 days)	13	<b>December</b>	
Fri 5 Paris (3 days)	5	Fri 23 Sidmouth at Christmas (5 days)	18
		Sat 24 Torquay at Christmas (4 days)	19

### H. R. RICHMOND LIMITED

**Blenheim Road, Epsom, Surrey (telephone Epsom 27821, telex 928493)**

Designed and Printed in England by Lithofast Company Limited, Southend-on-Sea.

Photographs by courtesy of the following Tourist Boards:—Scottish, Isle of Man, Welsh, West Country, S.E. England, German, Belgium and Facet Group Colour Library.