

Epsom Coaches

**2-8 day tours and
holidays 1980**



**H. R. Richmond Limited
Blenheim Road · Epsom · Surrey
Telephone: Epsom 27821**

**ENGLAND · SCOTLAND
WALES · IRELAND
CHANNEL ISLANDS
CONTINENT**

Index

England

- Blackpool Illuminations p.11
- Blackpool Illuminations and Southport p.11
- Bournemouth p.7
- Bournemouth in the New Year p.7
- Cathedral Cities p.5
- Chatsworth House and Tissington Well Dressing p.9
- Chester p.11
- Cotswolds p.10
- Devon and Cornwall p.4.
- English Lakes p.13
- English Shires p.8
- Heart of England p.10
- Ilfracombe p.5
- Inns of Olde England p.10
- Isle of Wight 3 days p.8
- Isle of Wight 8 days p.7
- Isles of Scilly p.4
- Northumbria and Lumley Castle p.13
- Norwich and Norfolk Broads p.9
- St. Ives p.4
- Sidmouth at Easter p.6
- Sidmouth in Autumn p.6
- Sidmouth at Christmas p.6
- Staffordshire Potteries and Worcester p.9
- Stately Homes and Gardens p.12
- Torquay p.5
- Weekend in Rye p.8
- York p.12
- Yorkshire p.12

Wales

- Pembrokeshire Coast p.15
- Snowdonia and Anglesey p.14
- Welsh Coast and Mountains p.14

Scotland

- Loch Lomond, Trossachs and Edinburgh p.16
- Oban and Western Highlands p.16
- Royal Deeside p.15

Ireland

- Southern Ireland p.17

Channel Islands

- Guernsey Bonus Breakaway p.19
- Jersey Bonus Breakaway p.18
- Jersey by Sea p.18
- Jersey by Air 4 days p.17
- Jersey by Air 8 days p.18

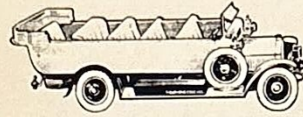
Continent

- Burgundy and Champagne p.20
- Chateaux and Vineyards of the Loire p.20
- Copenhagen Seabreak p.22
- Dutch Bulbfields p.21
- Gastronomic Weekend p.19
- Holland in Springtime p.21
- Paris and Versailles p.19
- Rhine and Moselle Valleys p.21
- Swiss Lakes and Mountains p.22

- General Information p.23
- Departure Points and Times p.24
- Booking Form p.24

Cover picture:
Braemar Castle.

Diamond Jubilee



Epsom Coaches was established in 1920 by Mr. H. R. Richmond, the son of a Norfolk farmer who served a seven year engineering apprenticeship in Scotland before moving to the London area. In 1920 Mr. Richmond bought a 'charabanc' and leased a garage in Epsom High Street. The first coaches had canvas hoods

and solid tyres.

Epsom Coaches moved into new premises in South Street in 1934 and by 1939 they had six coaches. During the Second World War the army commandeered five coaches leaving Mr. Richmond with one coach which he drove throughout the war.

After the war new coaches were on a quota of one or two a year. Mr. Richmond's second son R. B. Richmond, the present managing director, entered the firm at this time.

Epsom Coaches took over Leatherhead Coaches and Bookham Saloon Coaches in the early 1950s. Five coaches are still kept in Bookham.

In the late 1960s Mr. R. B. Richmond's two sons entered the coach business and two travel offices were opened. Epsom Travel and Crescent Travel, in Leatherhead, are both members of the Association of British Travel Agents and International Air Transport Authority.

The South Street garage was sold in 1971 and Epsom Coaches moved into its present premises in the Longmead Industrial Estate. On a one and a half acre site are offices, maintenance facilities and room for forty coaches. Recently the bays have been lengthened to accommodate longer vehicles. There is a new paintshop and automatic coach wash.

Today the company is still a private family concern and the largest independent coach operator in Surrey with a modern fleet of forty-five luxury coaches. Each year Epsom Coaches travels approximately one and a half million miles and to keep its fleet modern plans to buy eight new coaches annually.

Introduction

There are many new tours for 1980 including Southern Ireland which we are visiting for the first time. Departures in England include Cathedral Cities, English Shires, Inns of Olde England, Northumbria and Lumley Castle, Staffordshire Potteries and Worcester and a centre holiday in Yorkshire. In Wales we are visiting the Pembrokeshire Coast, Snowdonia and Anglesey and Welsh Coast and Mountains. Scottish tours include Loch Lomond, Trossachs and Edinburgh and Royal Deeside. The standard of hotels in the Channel Islands has been improved and on the Continent we are visiting Burgundy and Champagne, Picardie for a Gastronomic Weekend and Copenhagen. There are many variations on existing tours and we have tried to keep the number of overnight stops on each tour to a minimum.

Prices on British tours have increased more than usual to allow for a higher rate of value added tax and fuel costs which have increased by over half. With a better rate of exchange, Continental tours are relatively cheaper and there is still no value added tax in the Channel Islands. Compared to other forms of transport, coach travel is good value for money. There is the convenience of local departure points and the arrangements are taken care of.

Most tours include rooms with private facilities at no extra charge and coaches with reclining seats are now standard. For the comfort of non-smokers, smoking is now restricted to the back half of the coach.

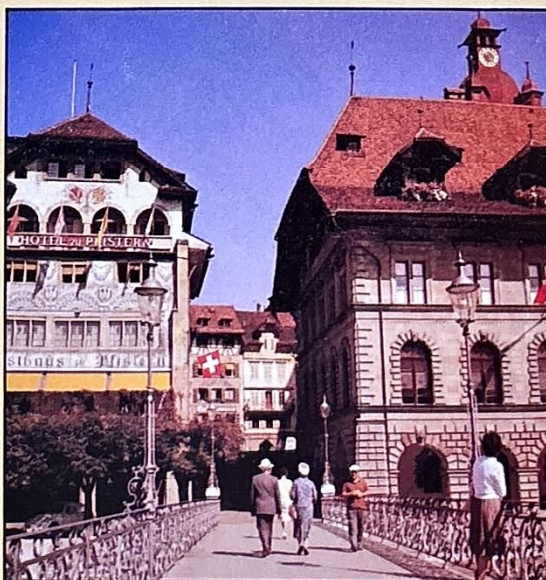
We welcome your comments and thank last year's passengers for filling in the questionnaires. The information was very useful when compiling this brochure.

Winter Programme

A Winter Programme including excursions to pantomimes and shows is available October onwards.

Express Services, Excursions and Tours

Our 1980 brochure for Express Services, Excursions and Tours will be available in February.



Door	Driver
1 2	3 4
5 6	7 8
9 10	11 12
13 14	15 16
17 18	19 20
21 22	23 24
25 26	27 28
29 30	31 32
33 34	35 36
37 38	39 40
41 42	43 44
45 46	Door
49 50	47 48

1980 Programme

February

- 23 Cathedral Cities 2 days **p.5**

March

- 13 Staffordshire Potteries and Worcester 2 days **p.9**
29 Weekend in Rye 2 days **p.8**

April

- 4 Sidmouth at Easter 4 days **p.6**
11 Bournemouth 3 days **p.7**
18 Dutch Bulbfields 3 days **p.21**
Stately Homes and Gardens 3 days **p.12**
24 Holland in Springtime 4 days **p.21**
Jersey Bonus Breakaway 5 days **p.18**
29 Copenhagen Seabreak 5 days **p.22**

May

- 1 Guernsey Bonus Breakaway 5 days **p.19**
2 Dutch Bulbfields 3 days **p.21**
3 York 3 days **p.12**
Heart of England 3 days **p.10**
8 Jersey Bonus Breakaway 5 days **p.18**
10 Isles of Scilly 8 days **p.4**
St. Ives 8 days **p.4**
11 Jersey by Air 8 days **p.18**
15 Chatsworth House and Tissington Well Dressing 2 days **p.9**
16 Snowdonia and Anglesey 3 days **p.14**
17 Oban and Western Highlands 8 days **p.16**
23 Ilfracombe 4 days **p.5**
30 Cotswolds 3 days **p.10**

June

- 1 Isle of Wight 8 days **p.7**
7 Torquay 8 days **p.5**
11 Loch Lomond, Trossachs and Edinburgh 4 days **p.16**
12 English Lakes 4 days **p.13**
14 Yorkshire 8 days **p.12**
Royal Deeside 8 days **p.15**
18 Welsh Coast and Mountains 5 days **p.14**
20 Northumbria and Lumley Castle 4 days **p.13**
23 Chateaux and Vineyards of the Loire 5 days **p.20**
26 Devon and Cornwall 4 days **p.4**

July

- 2 Loch Lomond, Trossachs and Edinburgh 4 days **p.16**
4 English Shires 3 days **p.8**
12 Royal Deeside 8 days **p.15**

- 17 Devon and Cornwall 4 days **p.4**
18 Pembrokeshire Coast 3 days **p.15**
25 Norwich and Norfolk Broads 3 days **p.9**

August

- 6 Loch Lomond, Trossachs and Edinburgh 4 days **p.16**
8 Snowdonia and Anglesey 3 days **p.14**
9 Royal Deeside 8 days **p.15**
14 Devon and Cornwall 4 days **p.4**
21 Rhine and Moselle Valleys 4 days **p.21**
22 Ilfracombe 4 days **p.5**
Paris and Versailles 3 days **p.19**
28 English Lakes 4 days **p.13**
29 Northumbria and Lumley Castle 4 days **p.13**

September

- 3 Loch Lomond, Trossachs and Edinburgh 4 days **p.16**
6 Swiss Lakes and Mountains 8 days **p.22**
7 Isle of Wight 8 days **p.7**
10 Welsh Coast and Mountains 5 days **p.14**
11 Devon and Cornwall 4 days **p.4**
13 Oban and Western Highlands 8 days **p.16**
Southern Ireland 8 days **p.17**
14 Jersey by Sea 8 days **p.18**
18 Rhine and Moselle Valleys 4 days **p.21**
19 Blackpool Illuminations and Southport 3 days **p.11**
20 St. Ives 8 days **p.4**
21 Jersey by Air 8 days **p.18**
23 Cotswolds 3 days **p.10**
27 Blackpool Illuminations 2 days **p.11**
29 Burgundy and Champagne 5 days **p.20**

October

- 3 Blackpool Illuminations and Southport 3 days **p.11**
Pembrokeshire Coast 3 days **p.15**
10 Jersey by Air 4 days **p.17**
11 Blackpool Illuminations 2 days **p.11**
14 Sidmouth in Autumn 4 days **p.6**
17 Inns of Olde England 3 days **p.10**
Isle of Wight 3 days **p.8**
21 Bournemouth 3 days **p.7**
24 Gastronomic Weekend 3 days **p.19**
25 Weekend in Rye 2 days **p.8**
31 York 3 days **p.12**

November

- 7 Chester 3 days **p.11**
28 Paris and Versailles 3 days **p.19**

December

- 23 Sidmouth at Christmas 5 days **p.6**
30 Bournemouth in the New Year 4 days **p.7**



Isles of Scilly

8 days £194.50
single room £203.50
supplement per person for double or twin with private bathroom £5.00.

Saturday 10 May

Prices include:

- Return transfer to Penzance in coach with reclining seats.
- Return flight to St. Mary's by British Airways helicopter.
- Return transfer to the Atlantic Hotel.
- 7 nights dinner, bed and breakfast at the Atlantic Hotel, Hugh Town (telephone 0720 22417).

First day Departure times awaiting flight details (points group W back page). We drive direct to Penzance stopping en route for refreshments. Late afternoon or early evening you board a British Airways helicopter for the short flight to St. Mary's. A bus conveys you to the hotel.

Last day You leave the hotel and return to the heliport for the flight back to Penzance. Return times awaiting flight details.

Isles of Scilly The Isles of Scilly are clustered almost 30 miles south-west of Land's End. They are steeped in history and have a charm that is unforgettable. The Scillies have a mild climate and are a paradise for wild flowers, birds and

marine life. St. Mary's is the largest of the inhabited islands. The hotel is situated directly overlooking the harbour from which launches make daily trips to Treco with its world famous sub-tropical gardens, St. Martin's, St. Agnes, Bryher and many other islands.

Atlantic Hotel The Atlantic is a delightful rambling old inn which has been modernised and re-furnished without losing its character. The Cocktail Bar and Shipwreck Bar lead out to the sun patio with steps on to the beach. There is a residents' lounge, television lounge and sun lounge.

St. Ives

8 days £117.50
single room £126.50
supplement per person for room with private facilities £9.00.

Saturdays 10 May and 20 September

Prices include:

- Travel in coach with reclining seats.
- 7 nights dinner, bed and breakfast at the Chy-an-Drea Hotel, St. Ives (AA 3-star, telephone 073 670 5076).

First day Epsom 0800 (other points group W1

back page). We drive to Cornwall stopping en route for refreshments and arriving early evening in St. Ives.

Sunday to Friday St. Ives is a colourful fishing port, popular with artists and fishermen. There is a labyrinth of narrow twisting streets, cobbled passages, archways and old cottages. Shops and restaurants surround the harbour and its fishing boats. During the stay we will visit Newquay, Falmouth, St. Michael's Mount (admission extra), Land's End, The Lizard, Truro, Penzance, Mousehole and Trengwainton Gardens (admission extra). There will also be a chance to go on a day trip to the Scilly Isles (extra charge).

Last day We leave after breakfast and return direct stopping en route for refreshments. Home approximately 2045.

Chy-an-Drea Hotel The hotel has been in the same family ownership since 1960 and commands magnificent views of Porthminster Beach, St. Ives Bay, the town and coastline. In 1978 the Chy-an-Drea was upgraded to a 3-star grading by the AA and RAC. There is a main lounge, television room and attractive dining room with superb views. A dance is held on Wednesday evenings.

Devon and Cornwall

4 days £77.50 (Astor Hotel £93.50)
single room £82.50 (Astor Hotel £102.50)

Thursdays 26 June, 17 July, 14 August and 11 September

Prices include:

- Travel in coach with reclining seats.
- 3 nights dinner, bed and breakfast in Plymouth (all rooms with private facilities) - Strathmore Hotel (telephone 0752 62101) or Astor Hotel (telephone 0752 25390).
- Admission to Cotehele House and Gardens.

Thursday Epsom 0800 (other points group W1 back page). We go out via Alresford and Winchester to Stockbridge where we stop for coffee. Stockbridge has a wide main street with many interesting old buildings. The journey continues through Salisbury, Wilton and Shaftesbury to Yeovil (lunch stop). By-passing Exeter, we arrive early evening in Plymouth. The Strathmore Hotel and Astor Hotel are both near Plymouth Hoe and the modern city centre is only walking distance. The Strathmore has a lift and all rooms with colour-television. The Astor is a luxury hotel which has recently been completely renovated. The facade and interior features reflect the elegance and gracious living of the late Victorian period. Tastefully furnished and equipped, the hotel offers service and cuisine of a very high standard. All rooms have colour television.

Friday The morning is free for shopping and sightseeing in Plymouth. It was from here the Mayflower sailed to America; also in Plymouth is where Sir Francis Drake finished his game of bowls before sailing to fight in the Spanish Armada. The old town still lives in the Barbican, a picturesque area of narrow streets, Elizabethan houses and fishing quays. Plymouth Hoe is perhaps the finest promenade in the country overlooking Plymouth Sound and the Cornish Coast. In the afternoon there is an excursion to Dartmouth, an ancient port with many seafaring traditions. Dartmouth is superbly situated on a steep hill on the west bank of the River Dart. There are many interesting old buildings including the remains of two castles. You will have time to go on a boat trip on the River Dart, thought by many to be the loveliest of Devon's rivers.

Dartmouth.

Saturday We go on a short day tour into Cornwall stopping for lunch at Cotehele House near Calstock. The gracious Tudor mansion house is built round two quadrangles. There are beautiful gardens on different levels including Victorian terraces, a shrub garden and a medieval dovecote. The tea stop is in Looe, a resort at the mouth of the River Looe which flows through a deep

wooded valley. West and East Looe are connected by an old stone bridge. There is a colourful fishing harbour and many old buildings including the Jolly Sailor Inn. We return to Plymouth via the Tamar Bridge.

Sunday We go via Totnes to Torquay where we stop for lunch. Torquay has a pretty fishing harbour and beautiful gardens with palm trees and sub-tropical plants. We return via Ilminster and Mere stopping on the way for tea. Home approximately 2100.



Ilfracombe

4 days £72.00
single room £77.00
supplement per person for room with private facilities £5.00.

Fridays 23 May and 22 August

Prices include:

- Travel in coach with reclining seats.
- Full board from dinner on Friday to lunch on Monday at the Dilkhusa Grand Hotel, Ilfracombe (AA 2-star, telephone 0271 63505).

Friday Epsom 0800 (other points group W1 back page). We stop for coffee in Winchester which for centuries was the capital of England. The lunch break is in Sherborne which abounds in old houses and inns. There is an imposing abbey and the School figured as the setting for

the film 'Goodbye, Mr. Chips'. We continue in the shadow of the Quantocks to Dunster for tea. Dunster is one of the most beautiful villages on Exmoor, dominated by a tower and a castle. We drive along the North Devon coast via Minehead and Lynton to Ilfracombe. The Dilkhusa Grand Hotel is on the level part of the town and only a few minutes from the quaint old harbour. All floors are served by lifts. In Hindustani Dilkhusa means 'House of the Friendly Heart'.

Saturday The morning and afternoon are free to explore Ilfracombe. You will probably be able to go on a cruise to Lundy Island (extra charge). Ilfracombe is built around its old harbour and is

the largest seaside resort in North Devon. There are many good shingle beaches, two of them reached by tunnels through the rocks. Ilfracombe is warmed by gentle breezes of the Gulf Stream. There are many pleasant walks to the Capstone and Lantern Hills. After dinner, there is a short mystery drive stopping at a country inn.

Sunday The morning is free in Ilfracombe. After lunch, we go on an excursion via Barnstable and Bideford to Clovelly for tea. Clovelly is a colourful little cliff village with a picturesque harbour and fishing boats.

Monday The morning is free for a last look at Ilfracombe. After lunch, we leave Ilfracombe and return direct via the Vale of Taunton Deane, Ilminster and Amesbury stopping en route for afternoon tea and an evening drink. Home approximately 2045.

Torquay

8 days £139.00 (Belgrave Hotel £163.50)
single room £148.00 (Belgrave Hotel £172.50)
supplement per person for room with private bathroom in either hotel £6.00

Saturday 7 June

Prices include:

- Travel in coach with reclining seats.
- 7 nights dinner, bed and breakfast at the Bute Court Hotel (AA 2-star, telephone 0803 23771) or Belgrave Hotel (AA 3-star, telephone 0803 28566).

First day Epsom 0800 (other points group W1 back page). Stopping en route for coffee, we arrive in Sherborne for lunch. Sherborne is a beautiful old town with narrow winding streets and houses built in mellow stone. In the afternoon, we take a leisurely drive via Yeovil, Crewkerne and Chard to Torquay.

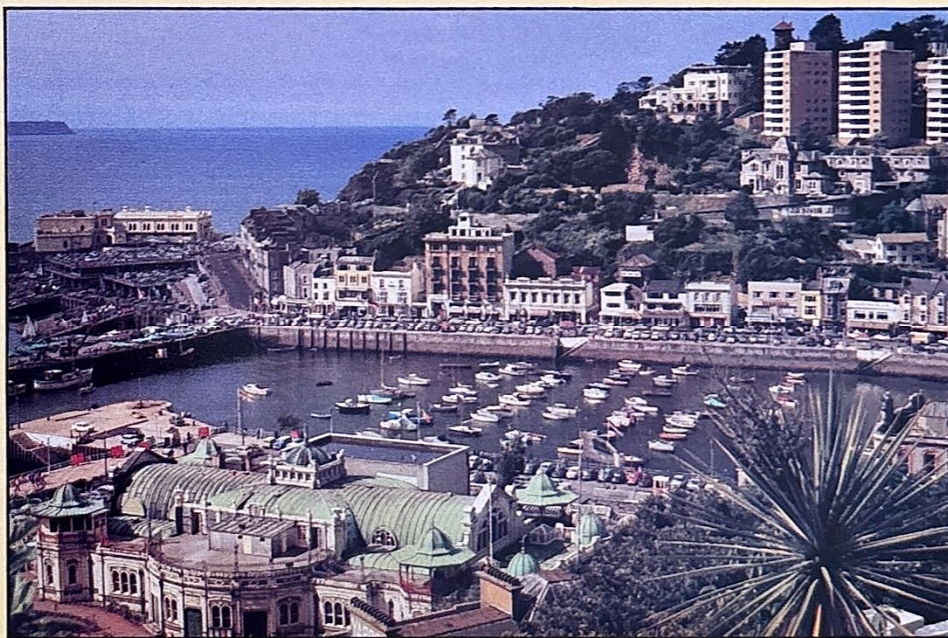
Sunday to Friday Torquay is capital of the South Devon Riviera with a magnificent setting in Tor Bay, flanked by cliffs and sheltered by wooded hills. There are beautiful bathing beaches, a picturesque harbour, a splendid seafront and colourful gardens with many palm trees and other sub-tropical plants. Torquay has theatres, a museum and an art gallery. During the stay we will visit Looe, Plymouth, Paignton Zoo (admission extra), Compton Castle (admission extra), Dartmoor, Dartmouth, Exeter, Bicton Gardens (admission extra), Sidmouth and many other beauty spots.

Last day We leave Torquay and return via Ilminster, Mere and the Salisbury Plain passing Stonehenge. Stops will be made for coffee, lunch and tea. Home approximately 2000.

Bute Court Hotel The hotel is situated in its own sheltered grounds in the heart of Torquay's Belgravia, only a few minutes walk from the sea. There is private access to the adjoining Abbey Gardens. Facilities include a lift, ballroom, games rooms and sun deck with heated swimming pool.

Torquay.

Belgrave Hotel This superior hotel is next to Abbey Gardens and occupies a premier sea front position on the level and within easy walking distance of the main shopping centre, theatres and cinemas. Facilities include a lift and swimming pool set in a sun patio enjoying superb views of Tor Bay. Most evenings there is dancing and entertainment in the Miranda Ballroom and occasionally a cabaret.



Cathedral Cities

2 days £32.00
single room £35.00

Saturday 23 February

Prices include:

- Travel in coach with reclining seats.
- Conducted tour of Salisbury Cathedral.
- Dinner, bed and breakfast at the Royal Clarence Hotel, Exeter (AA 3-star, all rooms with private bathroom, telephone 0392 58464).

Saturday Epsom 0830 (other points group W2 back page). We stop for coffee in Winchester which for centuries was the capital of England. Winchester Cathedral is the longest Gothic church in Europe and contains many famous

shrines. We continue via Stockbridge to Salisbury where we stop for lunch and a conducted tour of the Cathedral. Immortalised through the paintings of Constable, Salisbury Cathedral took only 38 years to build and was finished in 1258. The spire was added in the 14th century and is the tallest in England (404 feet). We go on via Wilton and Chard stopping en route for tea and arriving early evening in Exeter. The Royal Clarence Hotel is a Georgian building set in the shadow of the imposing Cathedral and only a few minutes walk from the historic sights of Exeter. Facilities in the hotel include a lift and all rooms have colour television.

Sunday After breakfast you will have a little time to explore the city or go to a service in the Cathedral which has Norman towers and is one of the finest examples of the Decorated period of Gothic architecture. We leave Exeter and continue via Street to Glastonbury where we make a short stop to see the ruined Abbey which is steeped in legend. The lunch stop is in Wells, a charming old town at the foot of the Mendip Hills. Wells Cathedral is one of the finest in the country. Outstanding features are the medieval mechanical clock and the famous West Front with its hundreds of statues. The moated Bishop's Palace is renowned for its bell-ringing swans. We go on via Shepton Mallet, Frome and Warminster making a short stop to view Stonehenge, an ancient stone circle erected on Salisbury Plain over three thousand years ago. Home approximately 1900.

Sidmouth at Easter

4 days £79.00

single room £86.50

supplement per person for room with private facilities £8.00

Friday 4 April

Prices include:

- Travel in coach with reclining seats.
- Full board from dinner on Good Friday to lunch on Monday at the Fortfield Hotel, Sidmouth (AA 3-star, Egon Ronay recommended, telephone 039 55 2403).

Good Friday Epsom 0830 (other points group W2 back page). Stopping in Winchester for

coffee, we continue via Ringwood and Tolpuddle to Dorchester for lunch. Dorchester was an important town in Roman times and has many links with Thomas Hardy and Judge Jeffreys. In the afternoon, we go via Bridport to Lyme Regis which has pretty colour-wash cottages and wonderful cliff scenery. We arrive late afternoon in Sidmouth.

Saturday The morning is free in Sidmouth. In the afternoon, we go on an excursion to Exeter, the capital of Devon. You can visit the Cathedral with its beautiful carving in wood and stone. Nearby stands Mol's Coffee House, where Elizabethan sea-captains drinking by the galleon-style bay-windows on the first floor could imagine themselves back on board ship.

Sunday The morning is at leisure. In the afternoon, we go on a short excursion to Bicton Gardens near Budleigh Salterton (admission extra). The Gardens were laid out in 1735 by Andre le Notre, the famous Frenchman who planned the gardens at Versailles. Attractions include a narrow-gauge railway, a countryside museum and vintage bus trips.

Monday The morning is free for a last look at Sidmouth. After lunch, we return direct via Chard, Yeovil and Shaftesbury stopping en route for refreshments. Home approximately 2030.

Sidmouth and Fortfield Hotel Please see Sidmouth at Christmas. ▼

Sidmouth in Autumn

4 days £79.00

single room £86.50

supplement per person for room with private facilities £8.00

Tuesday 14 October

Prices include:

- Travel in coach with reclining seats.
- Full board from dinner on Tuesday to lunch on Friday at the Fortfield Hotel, Sidmouth (AA 3-star, Egon Ronay recommended, telephone 039 55 2403).

Tuesday Epsom 0830 (other points group W2 back page). Stopping en route for coffee, we proceed via the New Forest to Bournemouth

where we stop for lunch. Bournemouth is set amidst gardens, pines and picturesque chines with beautiful sands. In the afternoon, we continue via Dorchester, Bridport and Lyme Regis, arriving late afternoon in Sidmouth.

Wednesday This morning is free and in the afternoon there is an excursion to Killerton near Exeter (National Trust, admission extra). Killerton is in a beautiful setting below Killerton Clump overlooking typical Devon countryside. The building now houses the Paulise de Bush Collection of Costumes, which is shown in a series of rooms furnished in different periods. In the autumn, the garden is very colourful.

Thursday The morning is free and in the afternoon we go on an excursion to Torquay, the capital of the South Devon Riviera. Torquay has a picturesque harbour, a splendid seafront and colourful gardens with many palm trees and other sub-tropical plants.

Friday You have the morning at leisure for a last look at Sidmouth. After lunch, we return direct via Ilminster, Mere and the Salisbury Plain stopping en route for refreshments. Home approximately 2030.

Sidmouth and Fortfield Hotel Please see Sidmouth at Christmas. ▼

Sidmouth at Christmas

5 days £163.00

single room £173.50

supplement per person for room with private facilities £10.50

Tuesday 23 December

Prices include:

- Travel in coach with reclining seats.
- Lunch on Tuesday at the Grosvenor Hotel, Shaftesbury.
- Full board with Christmas programme from afternoon tea on Tuesday to lunch on Saturday at the Fortfield Hotel, Sidmouth (AA 3-star, Egon Ronay recommended, telephone 039 55 2403).

Tuesday Epsom 0830 (other points group W2 back page). We drive through pretty Hampshire villages to Winchester where we stop for coffee. The journey continues via Salisbury to Shaftesbury where lunch is included in the Grosvenor Hotel, an old coaching inn. Proceeding via Yeovil, Crewkerne and Chard, we arrive in Sidmouth at tea-time.

Christmas Eve There is a morning excursion to Exeter where you will have time to visit the Cathedral and do a little shopping. The afternoon is free and after dinner there will be dancing till midnight.

Christmas Day There is a special cold buffet for lunch and afternoon tea with Christmas cake. In the evening a traditional Christmas dinner will be served by candlelight. You can dance till midnight.

Boxing Day There is a morning excursion to Woodbury Common to visit the meet of the East Devon Foxhounds. You can dance past midnight.

Saturday The morning is free for a last look at Sidmouth and a little shopping. After lunch, we leave Sidmouth and return via Ilminster, Mere and the Salisbury Plain stopping en route for tea. Home approximately 1930.



Main lounge, Fortfield Hotel.

Sidmouth Sidmouth is a quiet resort on the South Devon coast. It is flanked by red and white cliffs and sheltered between two tree-covered hills giving a mild climate all the year round. The resort preserves the beauty of the local countryside. There is a fine shopping centre.

Fortfield Hotel The Fortfield is an independent hotel commended by the British Tourist Authority. It overlooks the sea and is close to the town centre. There is central heating throughout, a lift to the first and second floor, two lounges facing the sea and gardens, a colour television room, a cocktail bar and a solarium (extra charge).

ENGLAND

Bournemouth

3 days £47.00

single room £51.00

supplement per person for twin with private bathroom £3.00

Friday 11 April and Tuesday 21 October

Prices include:

- Travel in coach with reclining seats.
- Full board from lunch on the first day to lunch on the third day at the Pinehurst Hotel, Bournemouth (AA 2-star, twin rooms with private shower, telephone 0202 26218).

First day Epsom 0900 (other points group W3 back page). We drive across the Hog's Back and through pretty Hampshire villages stopping en route for coffee before arriving in Bournemouth at lunchtime. The Pinehurst Hotel is situated

within easy reach of the town centre, also close to the beautiful West Cliff and golden beaches. There are three comfortable lounges, a lift to all floors and a bar. In the afternoon, there is a short excursion to Poole which has one of the finest natural harbours in the world and is a centre for fishing and yachting. Much of the town seems little changed since the days of pirates and there are many interesting old houses and inns. You can visit the shop of the famous pottery.

Second day The morning is free to explore Bournemouth which is situated amidst gardens, pines and picturesque chimes. Bournemouth is sheltered and has a mild climate. There are miles

of clean sands, good bathing, two piers, three beach lifts, many beautiful parks and gardens, and an excellent shopping centre. After lunch, we go via the Sandbanks chain ferry to the Isle of Purbeck. We stop for tea in Swanage before passing the ruins of Corfe Castle and returning via Wareham. In the evening, there is plenty of entertainment in Bournemouth – dancing, cinemas, theatres and concerts.

Third day The morning is free for a last look at Bournemouth. We leave after lunch and drive through Christchurch to Lymington before crossing the New Forest which was a royal hunting preserve for William the Conqueror. In the vast woodlands of the New Forest are deer, donkeys and almost two thousand wild ponies. A tea stop will be made en route. Home approximately 1800.

Bournemouth in the New Year

4 days £78.00

single room £83.00

supplement per person for twin with private bathroom £4.00

Tuesday 30 December

Prices include:

- Travel in coach with reclining seats.
- Full board from lunch on Tuesday to lunch on Friday at the Pinehurst Hotel, Bournemouth (AA 2-star, twin rooms with private shower, telephone 0202 26218).

Tuesday Epsom 0900 (other points group W3 back page). We drive across the Hog's Back and through pretty Hampshire villages, stopping en route for coffee before arriving in Bournemouth at lunchtime. The Pinehurst Hotel is situated

within easy reach of the town centre, also close to the beautiful West Cliff and golden beaches. There are three comfortable lounges, a lift to all floors and a bar. The afternoon is free to explore Bournemouth. Situated amidst gardens, pines and picturesque chimes, the resort is sheltered with a mild climate. There are two piers, three beach lifts, many beautiful parks and gardens, and an excellent shopping centre.

Wednesday In the morning, there is a short excursion to Poole which has one of the finest natural harbours in the world and is a centre for fishing and yachting. You can visit the shop of the famous pottery. In the evening there will be

a special dinner dance in the Pinehurst Hotel to see in the New Year.

Thursday The morning is free and after lunch we go via the Sandbanks chain ferry to the Isle of Purbeck. We stop for tea in Swanage before passing the ruins of Corfe Castle and returning via Wareham.

Friday The morning is free for a last look at Bournemouth. We leave after lunch and continue along the coast to Lymington before turning inland and returning via the New Forest which was once a royal hunting preserve. A tea stop will be made en route. Home approximately 1800.

Isle of Wight

8 days £109.00

single room £118.00

supplement per person for room with private bathroom £8.50

Sundays 1 June and 7 September

Prices include:

- Return transfer to Southampton in coach with reclining seats.
- Return crossing to Cowes by Red Funnel steamer.
- Return transfer to the Littledene Hotel.
- 7 nights dinner, bed and breakfast at the Littledene Hotel, Ventnor (telephone 0983 852365).

First day Epsom 0900 (other points group W3 back page). We drive to Southampton where you will have time for lunch before boarding the Red Funnel steamer via Southampton water and the Solent to Cowes. All the luggage will be transported in a skip so you will not have to worry about carrying your own luggage. A coach meets us at the ferry terminal and conveys us to the Littledene Hotel in Ventnor.

Last day We leave after breakfast and return to Cowes for the ferry back to Southampton. After stopping in Southampton for lunch, we return direct. Home approximately 1600.

Ventnor Often named the "Madeira of England", Ventnor is situated on the southern coast of the Isle of Wight in the heart of the famous Undercliff. It is sheltered by the green heights of St. Boniface Down and has everything for an enjoyable holiday – a fine sandy beach, safe bathing, a canoe lake and a miniature "Isle of Wight". There are facilities for putting, bowling, horse-riding, tennis and golf, also entertainment at the Winter Gardens and Royal Victoria Pier. In the Botanic Garden, rare plants and palm trees thrive out of doors.



Ventnor.

Littledene Hotel The hotel is situated in a charming spot on the town level, near Ventnor Beach and a few minutes from the picturesque village and delightful beach of Bonchurch. The Littledene stands in its own beautiful grounds,

and facing due south, is sheltered on the north by natural rugged cliffs. It is under the personal supervision of the resident proprietors. The dining room and sun lounge overlook the garden and all bedrooms are modern and well furnished. There is a choice of menu at all meals and at least two nights entertainment a week. The hotel is centrally heated.

Isle of Wight

3 days £47.00
single room £51.00

Friday 17 October

Prices include:

- Return transfer to Southampton in coach with reclining seats.
- Return crossing to Cowes by Red Funnel steamer.
- Return transfer to the Royal Hotel.
- 2 nights dinner, bed and breakfast at the Royal Hotel, Ventnor (AA 3-star, Egon Ronay recommended, all rooms with private bathroom, telephone 0983 852186).
- Afternoon tour of the island.

Friday Epsom 0900 (other points group W3

back page). We drive to Southampton where you will have time for lunch before boarding the Red Funnel steamer via Southampton Water and the Solent to Cowes. All the luggage will be transported in a skip so you will not have to worry about carrying your own luggage. A coach meets us at the terminal and takes us to the Royal Hotel in Ventnor. The Royal is Ventnor's largest hotel and stands in attractive gardens about five minutes walk from the sea. There is a lift to most floors, colour television in all rooms and a heated swimming pool.

Saturday The morning is free to explore Ventnor

which faces south and has a very mild climate. Ventnor has delightful scenery and is picturesque with houses built in terraces on a cliff. Immediately behind Ventnor is St. Boniface Down, the highest point in the island, and nearby is Undercliff where interesting trees, plants and shrubs flower in abundance. In the afternoon, there is a tour of the island visiting Shanklin, Sandown, Ryde and Yarmouth. The tea stop is in Alum Bay, famous for its multi-coloured sands, and we return via Blackgang.

Sunday The morning is at leisure. In the afternoon we return to Cowes for the steamer back to Southampton. After stopping in Southampton for tea, we return direct. Home approximately 1915.

Weekend in Rye

2 days £29.50

Saturdays 29 March and 25 October

Price includes:

- Travel in coach with reclining seats.
- Dinner in the Tudor Room of the Mermaid Hotel.
- Bed and breakfast — doubles and twins at the Mermaid Hotel, Rye (Egon Ronay recommended, all rooms with private facilities, telephone 079 73 3065) and singles in the Ship Hotel, Rye (telephone 079 73 2233).

Saturday Epsom 0930 (other points group SE3 back page). We go via Limpsfield and Westerham to Aylesford where we stop for coffee at the Friary which is noted for pottery made by the monks. Proceeding via Charing Hill, we drive through Kent countryside past orchards and hop fields to Canterbury for lunch. Pilgrims used to walk to Canterbury Cathedral to see the shrine of Thomas Becket. The city has ancient walls and gateways, also the riverside home of the Huguenot weavers. In the afternoon, we go along the coast through Dover, Folkestone and Hythe, then drive across the Romney Marsh arriving in Rye at teatime. The Mermaid Hotel was rebuilt in 1420 and is one of the oldest inns in the country. It has unique connections with the days of smuggling and invasions by the French. The Ship Hotel is on the corner of Mermaid Street and under the same management. In the evening, dinner is served in the Tudor Room of the Mermaid Inn — fresh vegetable soup, roast leg of Romney Marsh lamb, selection of fresh vegetables, apple and blackberry pie and coffee (option of cold roast beef with salad).

Sunday We do not leave Rye till midday leaving you time to explore the narrow cobbled streets lined with timbered houses. From Ypres Tower



Mermaid Hotel, Rye.

are fine views across the marsh to the modern harbour of Rye. We continue along the coast via Hastings and Bexhill to Eastbourne for lunch. Eastbourne has a multi-level seafront with

bandstand, pier, promenades, terraces, lawns and flowers. After lunch, we turn inland and drive across the Weald to Tunbridge Wells for tea. The town was made famous as a spa and you can still drink the mineral waters. Home approximately 1830.

English Shires

3 days £54.00

single room £58.00

supplement per person for room with private bathroom £6.00

Friday 4 July

Prices include:

- Travel in coach with reclining seats.
- Admission to Springfields Gardens.
- 2 nights dinner, bed and breakfast at the Grand Hotel, Lincoln (AA 2-star, telephone 0522 24211).
- Cream tea in the Old Rectory at Epworth.
- Admission to Belvoir Castle.

Friday Epsom 0830 (other points group N4 back page). We go out via the Epping Forest, Roding Villages and picturesque village of Finchingfield to Cambridge where we stop for lunch. You will have a little time to see

some of the colleges and the gardens sloping down to the River Cam. Later in the afternoon we visit Springfields garden which was opened in 1966 and has the second largest display of roses in Britain. There are various displays of summer flowering plants, shrubs and trees, a garden centre and a restaurant. We arrive early evening in Lincoln. The Grand Hotel is in the city centre only a few minutes walk from the Cathedral.

Saturday The morning is free for shopping and sightseeing. Lincoln is one of the most historic cities in Britain and has a majestic Cathedral on a plateau overlooking the River Witham. Surrounding the Cathedral are steep cobbled streets lined with medieval buildings. The city

also has well-preserved Roman remains including the splendid Newport Arch marking the north gate of the Roman settlement. In the afternoon, there is a short excursion to the Old Rectory at Epworth where John Wesley, founder of the Methodist Church, was born. A cream tea will be served in the house.

Sunday After a late start, we drive to Newark where we stop for lunch. The town has a cobbled market place, two attractive 14th century inns and the ruins of a castle overlooking the River Trent. Next we visit Belvoir Castle, the Home of the Duke and Duchess of Rutland, which occupies a commanding position overlooking the beautiful Vale of Belvoir. Inside you are free to enjoy the magnificent State Rooms, beautiful works of art and an historic Armoury of Weapons. On the day we visit Belvoir the Napoleonic Association is staging a mock battle and display. We return direct, stopping en route for refreshment. Home approximately 2100.

Norwich and Norfolk Broads

3 days £52.00
single room £56.00
Friday 25 July

Prices include:

- Travel in coach with reclining seats.
- Cruise on the Norfolk Broads.
- 2 nights dinner, bed and breakfast at the Norwich Hotel, Norwich (AA 3-star, Egon Ronay recommended, all rooms with private bathroom, telephone 0603 410431).

Friday Epsom 0800 (other points group N3 back page). We go out via the Epping Forest and Roding Villages to Great Dunmow, then make a short

stop in Lavenham which is rich in half-timbered houses. The lunch stop is in Bury St. Edmunds where there are ruins of an Abbey, founded by King Canute, and a Cathedral. We arrive late afternoon in Norwich and check in at the Norwich Hotel which is just over a mile from the city centre. The bedrooms are spacious and well equipped with colour television. Facilities include a pleasant lounge, bar and sauna.

Saturday After breakfast, we drive into the city centre for shopping and sightseeing. Norwich was once the centre of the weaving industry and the 'second city' of England. There is a fine Cathedral

and thirty-two medieval churches, quaint byways and gabled houses, an open-air market and modern traffic-free shopping precincts. In the afternoon, we drive to Wroxham for a cruise on the Norfolk Broads to Horning Ferry and back. The Broads are a haven for sailing and motor-boat enthusiasts.

Sunday We drive into the city centre for further sightseeing and a short guided walking tour. After lunch, we leave Norwich, and go via Newmarket, the centre of the British racing industry, to Cambridge for tea. Cambridge is famous as a University city and centre of scientific research. You will have a little time to see some of the colleges and walk beside the River Cam which is spanned by many fine bridges. Home approximately 2030.

Chatsworth House and Tissington Well Dressing

2 days £33.50
single room £36.50
Thursday 15 May

Prices include:

- Travel in coach with reclining seats.
- Dinner, bed and breakfast at the Palace Hotel, Buxton (all rooms with private bathroom, telephone 0298 2001).
- Admission to Chatsworth House and Garden.

Thursday Epsom 0800 (other points group N3 back page). The lunch stop is in Ashbourne, one of the most attractive market towns in Derbyshire, often called 'the gateway to the Peak'. In the afternoon, we visit the Well-dressing in Tissington, 'the loveliest village in Derbyshire'. There are five wells and the dressings always take place on Ascension Day. Flower petals are pressed into clay making giant jig-saw patterns. The screens are very colourful and emphasise the religious origin of the custom. Later in the afternoon, we visit Dove Dale where the River Dove flows swiftly through a richly wooded limestone gorge. We arrive early evening at the Palace Hotel which dominates the town of Buxton, and offers panoramic views of the Peak District and delightful Derbyshire Hills. The hotel is spacious and well appointed with a heated indoor swimming pool, games rooms and putting green in the gardens. Most bedrooms have television and all floors are served with a lift.

Friday You will have a little time to explore Buxton which became famous as a spa and is one of the highest towns in England. The town has many fine buildings and some beautiful gardens. Leaving Buxton, we go on a short tour of the Derbyshire Peaks before stopping for an early lunch in Bakewell which is famous for its tarts. After lunch, we visit Chatsworth House "The Palace of the Peak". It was built in 1707 for the 1st Duke of Devonshire and its collection of paintings, sculpture, manuscripts and fine



Chatsworth House.

furniture is world renowned. The extensive garden with its celebrated cascade and fountains, and the

wooded park on the banks of the River Derwent provide a splendid setting for the House. We return direct, stopping en route for refreshments. Home approximately 2115.

Staffordshire Potteries and Worcester

2 days £34.00
single room £38.00
Thursday 13 March

Prices include:

- Travel in coach with reclining seats.
- Conducted tour of Royal Worcester Porcelain Works.
- Dinner, bed and breakfast at the Clayton Lodge Hotel, Newcastle-under-Lyme (AA 3-star, Egon Ronay recommended, all rooms with private bathroom, telephone 0782 613093).
- Conducted tour of Gladstone Pottery Museum.
- Admission to Wedgwood Visitor Centre.

Thursday Epsom 0800 (other points group N3 back page). We go out via the Thames Valley

and Chiltern Hills, then through Woodstock and Chipping Norton into the Cotswolds. Crossing the Vale of Evesham, we arrive in Worcester at lunchtime. You will have a little time to see round the beautiful Cathedral overlooking the River Severn before going to the Royal Worcester Porcelain Works to be conducted through a cross section of all departments by trained guides. The factory was founded in 1750 at the time when porcelain manufacture started in England. You can visit the Museum and Reject Shop, also have tea in the staff canteen. We leave Worcester and arrive early evening at the Clayton Lodge Hotel, Newcastle-under-Lyme. Facilities include a residents' lounge, a cocktail lounge, a smart pub and all rooms with television.

Friday In the morning we visit the Gladstone Pottery Museum in Longton which won the Museum of the Year Award in 1976. There is an early Victorian 'potbank' complete with original bottle ovens and restored old workshops in which pottery is seen being made by craftsmen. Galleries relate to the development of the Staffordshire Potteries, ceramic tiles and decorating techniques. In the afternoon, we visit the Wedgwood Museum and Visitor Centre in Barlaston. You will see potters and decorators at work making Wedgwood for today, also the first wares Josiah Wedgwood made when he founded the famous firm in 1759 and hundreds of unique and beautiful pieces made in the years between. Afterwards, you can relax in the refreshment lounge which adjoins the souvenir shop. We return direct, stopping en route for refreshment. Home approximately 2100.

Cotswolds

3 days £52.00
single room £56.00

Friday 30 May and Tuesday 23 September

Prices include:

- Travel in coach with reclining seats.
- 2 nights dinner, bed and breakfast at the Carton Hotel, Cheltenham Spa (AA 3-star, Egon Ronay recommended, all rooms with private bathroom, telephone 0242 54453).
- Admission to Sudeley Castle and the grounds of Blenheim Palace.

First day Epsom 0830 (other points group N4 back page). We stop for coffee in Henley-on-Thames, a pleasant riverside resort famous for its regatta. Crossing the Chiltern Hills, we continue to Burford for lunch. Burford is a picturesque Cotswold town lined by old houses and inns.

The tea stop is in Bourton-on-the-Water, a lovely old Cotswold village on the River Windrush with many stone houses, miniature bridges and riverside greens. We arrive early evening at the Carlton Hotel in Cheltenham Spa. The hotel commands a first-class position in the heart of the town. There is a lift and all bedrooms have colour television.

Second day The morning is free to explore the city on foot. Cheltenham is at the foot of the Cotswolds and renowned for its elegant Regency terraces, tree-lined streets and beautiful gardens. The hotel is near the Promenade which is acknowledged to be one of the finest shopping centres in the country. In the afternoon, there is an excursion to Sudeley Castle, the beautiful

12th century Cotswold home of Queen Katherine Parr. The house is rich in Tudor history and art treasures including paintings by Constable, Rubens and Van Dyck. The beautiful "Elizabethan Garden" is one of the main highlights of Sudeley's famous gardens. In an unique setting in the Old Keep is a costume exhibition.

Third day After a late departure, we leave Cheltenham and drive to Stow-on-the-Wold where we stop for lunch. Stow is a hilltop town and was once a bustling centre of the wool industry. Narrow passageways lead into the market square where there are many interesting old houses and inns, a market cross and stocks. We continue via Chipping Norton to Woodstock where we stop for tea in the grounds of Blenheim Palace. You will have time to visit the cafeteria and gift shop. Home approximately 1945.

Heart of England

3 days £52.50
single room £56.50

Saturday 3 May

Prices include:

- Travel in coach with reclining seats.
- 2 nights dinner, bed and breakfast at the Abbey Hotel, Great Malvern (AA 3-star, Egon Ronay recommended, all rooms with private bathroom, telephone 068 45 3325).
- Boat excursion on the River Wye.
- Admission to the grounds of Blenheim Palace.

Saturday Epsom 0830 (other points group N4 back page). We go out via the Thames Valley and Chiltern Hills, then through Chipping Norton into the Cotswolds via Moreton-in-Marsh to Broadway for lunch. The beauty of the mellow, honey-coloured stone buildings has lured visitors to Broadway since the last century. We continue via the Vale of Evesham and Pershore to Great Malvern, arriving late afternoon at the Abbey Hotel. The hotel is ivy-clad and adjoins the old Priory. On one side are the lovely hotel gardens and on the other the Malvern Hills. There is a lift and all rooms have colour television.

Sunday You can either spend the morning in Great Malvern or go on an excursion to Broadheath, the cottage where Sir Edward Elgar was born (admission extra). One of Britain's loveliest inland resorts, Great Malvern is sheltered by hills from the west wind and full of historic interest. Broadheath is near Worcester and contains many relics of the famous composer including some proof scores and books. In the afternoon, after a short tour of the Malvern Hills halting at the Worcestershire Beacon, we go via Ledbury and Ross-on-Wye to Symond's



Great Malvern.

Yat where we stop for tea and a cruise on the River Wye. The Yat is a well known beauty spot where the River Wye flows through a narrow gorge in a richly wooded setting.

Monday After a late start, we go to Stratford-upon-Avon where you will have time for lunch and a little sightseeing. Stratford is a lovely old market town rich in half-timbered houses and memories of Shakespeare. We go on to Woodstock where we stop for tea in the grounds of Blenheim Palace. You will have time to visit the cafeteria and gift shop. Home approximately 1945.

Inns of Olde England

3 days £59.50
single room £63.50
Friday 17 October

Prices include:

- Travel in coach with reclining seats.
- 2 nights dinner, bed and breakfast at the Feathers Hotel, Ludlow (AA 3-star, Egon Ronay recommended, all rooms with private bathroom, telephone 0584 2919).

Friday Epsom 0830 (other points group N4 back page). We stop for coffee in Pangbourne near the Swan Hotel where the heroes of 'Three men in a boat', stayed. The journey continues via the Berkshire Downs and Vale of White Horse to Cirencester where we stop for lunch. You can lunch in the King's Head Hotel, a friendly old coaching inn in the Market Place. Later in

the afternoon, we go via Gloucester, Ledbury and Leominster to Ludlow where we stop the next two nights at the Feathers Hotel. Probably built in 1521, the Feathers is an ornate, half-timbered, gabled inn. The interior contains a carved oak mantelpiece and panelled rooms.

Saturday Most of the morning is free to explore Ludlow, an ancient town with many fine timbered and Georgian buildings, a medieval gateway, a butter cross and alleyways with small antique shops. The Castle which overlooks the river, was built in the 11th century to repel Welsh raiders. Later we go via the Long Mynd to Shrewsbury where we stop for lunch. Shrewsbury is beautifully situated within a loop of the River Severn and everywhere there are black and white buildings in plaster and weathered timber, little

changed since the days of Elizabeth I. Here you can visit the Lion, an ancient coaching inn overlooking the town from a hill. Among the Lion's famous 19th century visitors were the singer Jenny Lind, the violinist Paganini, and Charles Dickens.

Sunday After a late start, we go via Bromyard, Worcester and Alcester to Stratford-upon-Avon where we stop for lunch. Stratford is a lovely old town rich in half-timbered houses and memories of Shakespeare. The Falcon Inn overlooks New Place Gardens, where Shakespeare spent his later years. Nearby is the Shakespeare Hotel with its lattice windows, low beams and polished flagstone floors. After lunch, we go via Woodstock to Oxford where we stop for tea. Founded over ten centuries ago, Oxford is world-famous as a University city and contains over 30 colleges. We return via the Chiltern Hills and Thames Valley. Home approximately 1945.

ENGLAND

Chester

3 days £57.00
single room £61.00

Friday 7 November

Prices include:

- Travel in coach with reclining seats.
- 2 nights dinner, bed and breakfast at the Blossoms Hotel, Chester (AA 3-star, Egon Ronay recommended, all rooms with private bathroom, telephone 0244 23186).
- Visit to a Cheshire cheese farm.

Friday Epsom 0800 (other points group N3 back page). We stop for coffee in Henley-on-Thames, a pleasant riverside resort famous for its regatta. The journey continues via Woodstock and the Cotswolds to Evesham where we stop for lunch. The town is on the River Avon and

centre of the fruit-growing industry of the Vale of Evesham. In the afternoon, we go via Worcester, Kidderminster and Bridgnorth to Shrewsbury for tea. The town is beautifully situated on the River Severn and everywhere there are superb black-and-white buildings in plaster and weathered timber, little changed since the days of Elizabeth I. Early evening we arrive in Chester at the Blossoms Hotel which is in the heart of the city. Once the terminus of the London to Chester stagecoaches, the hotel has been extensively modernised. Facilities include a lift and colour television in all bedrooms.

Saturday The morning is at leisure. The former Roman city has ancient walls and there have been recent excavations on an amphitheatre. There are

streets full of black-and-white half-timbered houses, old taverns, arcaded shops known as the 'Rows' and a beautiful Cathedral which was once a Benedictine Abbey. In the afternoon, there is an optional excursion to Liverpool via the Mersey Tunnel. Liverpool started as a fishing village but trading with the West Indies, and the slave trade, led to a surge of expansion. With the coming of the steamships in the 1840s, the city began to take on its present form. We will see Liverpool's two modern cathedrals which are both on high ground overlooking the city.

Sunday In the morning, there is an excursion to Mollington to see a Cheshire cheese farm. You will be able to see the cheese being made and sample some of the cheeses. We return to Chester for lunch before making the homeward journey. Refreshment stops will be made en route. Home approximately 2000.

Blackpool Illuminations and Southport

3 days £54.50
single room £58.50

Fridays 19 September and 3 October

Prices include:

- Travel in coach with reclining seats.
- Dinner on Friday night, lunch on Saturday and 2 nights bed and breakfast at the Prince of Wales Hotel, Southport (AA 4-star, Egon Ronay recommended, all rooms with private bathroom, telephone 0704 36688).

Friday Epsom 0830 (other points group N4 back page). Stopping en route for coffee, we drive to Coventry where we stop for lunch. A statue in Broadgate commemorates Lady Godiva, who rode naked through Coventry in protest at her husband's oppression of the citizens. After serious war damage, Coventry was rebuilt and a new Cathedral consecrated in 1962. Stopping en route for tea, we arrive early evening in Southport. All bedrooms in the Prince of Wales Hotel have colour television and there is a lift.

Saturday The morning is free to explore Southport, "England's Seaside Garden City". Southport has a wide expanse of sands, beautiful gardens and a long pier. The hotel is situated in Lord Street with its cafes, gardens, fountains and stately shopping parades. After lunch in the hotel, we drive to Blackpool where you will be able to see the Illuminations. The spectacular autumn lights stretch along the Promenade and are dominated by Blackpool Tower. Trams operate along the seafront and there are many funfairs.

Sunday After a late breakfast, we leave Southport and go via Knutsford to the Derbyshire Peaks. Passing the Cat and Fiddle Inn in its lonely moorland setting, we arrive in Buxton where we stop for lunch. Buxton is one of the highest towns in England and became famous as a spa. It has many fine buildings and beautiful gardens. We return via Matlock and Bakewell stopping en route for refreshments. Home approximately 2000.



Blackpool Illuminations.

Blackpool Illuminations

2 days £32.00
single room £38.00

Saturdays 27 September and 11 October

Prices include:

- Travel in coach with reclining seats.
- Bed and breakfast at the Preston Crest Hotel (AA 3-star, Egon Ronay recommended, all rooms with private bathroom, telephone 0772 59411).

Saturday Epsom 0830 (other points group N4 back page). Stopping en route for coffee, we

drive to Lichfield where we halt for lunch. Dr. Johnson's birthplace is in the market square and the city is dominated by a beautiful cathedral with three graceful spires known as 'The Ladies of the Vale'. Later in the afternoon, we reach the Preston Crest Hotel which is in the centre of Preston. You will have time to check into your room and get ready for the evening drive to Blackpool. We stop about four hours in Blackpool allowing plenty of time to see the Illuminations. Colourful garlands of fairy lights and rainbow

fountains stretch six miles along the Promenade and giant tableaux bring old legends back to life. Trams operate regularly along the sea front. There are three piers, the Tower and a pleasure beach with side shows.

Sunday After a late start, we leave Preston and go via Knutsford to the Derbyshire Peaks stopping in Buxton for lunch. The town became famous as a health spa and is one of the highest towns in England. There are many fine buildings and beautiful gardens. We return via Bakewell and Matlock stopping en route for refreshments. Home approximately 2000.

Yorkshire

8 days £136.00

single room £145.00

supplement per person for room with private facilities
£12.50.

Saturday 14 June

Prices include:

- Travel in coach with reclining seats.
- 7 nights dinner, bed and breakfast at the Esplanade Hotel, Scarborough (AA 2-star, telephone 0723 60382).

First day Epsom 0800 (other points group N3 back page). Stopping en route for coffee, we continue to Grantham where we stop for lunch. The ancient town has some fine old coaching inns and an attractive market square. In Castlegate, the Beehive Inn has a unique 'inn sign' – a hive used by bees in a tree outside the Inn. We continue along the Great North Road before turning off to Scarborough and arriving early evening at the Esplanade Hotel.

Sunday to Friday Fishing village, seaside town, spa, historic site – Scarborough merges them all in a splendour of cliff scenery and sandy bays. In the harbour, cobbles and mules (traditional fishing vessels), drifters and trawlers nose in and out alongside the covered fish market. The headland is crowned by Scarborough Castle, a magnificent 12th century relic above the cliffs. During our stay, we will visit York, Castle Howard (admission extra), Robin Hood's Bay, Whitby, Pickering, Rievaulx Abbey and the North Yorkshire Moors. In York you can walk along the city walls and in the narrow streets with overhanging gables, also visit the Minster with its majestic towers and priceless stained glass windows. Castle Howard is the largest house in Yorkshire and can be seen for miles around. The narrow main street of Robin Hood's Bay plunges down to the sea and Whitby is picturesquely situated at the mouth of the River Esk. Pickering is a lovely town at the

southern foot of the moors and Rievaulx Abbey is one of the earliest Cistercian buildings in England.

Last day Stopping en route for coffee, we make a short detour to Lincoln where we halt for lunch. The city has a magnificent triple-towered Cathedral on a hill overlooking the River Witham. Medieval houses line the steep cobbled streets and a Roman arch spans the main road. We return direct, stopping en route for refreshments. Home approximately 2000.

Esplanade Hotel, Scarborough The Esplanade is situated in a magnificent position overlooking the entire South Bay with its sandy beach, fascinating harbour, old town and the famous spa gardens. A short walk across the foot bridge brings you to Scarborough's busy shopping centre. There is a choice of lounges all with spectacular sea views, a cocktail lounge, a lift to all floors, a fine restaurant and a television lounge.

York

3 days £62.00

single room £66.50.

Saturday 3 May and Friday 31 October

Prices include:

- Travel in coach with reclining seats.
- 2 nights dinner, bed and breakfast at the Abbey Park Hotel, York (AA 3-star, Egon Ronay recommended, all rooms with private bathroom, telephone 0904 25481).
- Ghost walk on the second evening.

First day Epsom 0800 (other points group N3 back page). Stopping en route for coffee, we arrive in Stamford for lunch. A charming stone-built market town with many interesting old houses, Stamford used to be an important wool centre when Stamford cloth was renowned throughout Europe. After lunch, we continue along the Great North Road stopping en route for tea and arriving early evening in York. The Abbey Park Hotel is near Micklegate Bar, the West Gate of the Norman city. Facilities include a lift and colour television in all bedrooms.

Second day The morning is free to explore York which is one of the finest medieval cities in Europe. You can walk along the city walls and in the narrow streets with overhanging gables, also visit the pride of the city, the great Minster with its majestic towers and priceless stained glass windows. The Castle Museum has period rooms, a cobbled street and an Edwardian street. In the afternoon, you can stop in York or go on an excursion to the North Yorkshire Moors and Harrogate. Harrogate became famous when it was fashionable to 'take the waters'. Dignified



Shambles, York.

Victorian architecture, banks of flowers and well-planned open spaces characterise the town which is known as the 'Garden Resort'. After dinner, a guide will meet us at the hotel for a

Ghost Hunt lasting about two hours.

Third day The morning is free for further sight-seeing. We leave after lunch and return direct stopping en route for refreshments. Home approximately 2045.

Stately Homes and Gardens

3 days £62.50

single room £66.50

Friday 18 April

Prices include:

- Travel in coach with reclining seats.
- Admission to Haddon Hall.
- 2 nights dinner, bed and breakfast at the Hotel St. George, Harrogate (AA 3-star, Egon Ronay recommended, all rooms with private bathroom, telephone 0423 61431).
- Admission to Castle Howard.
- Admission to Burghley House.

Friday Epsom 0800 (other points group N3 back page). Stopping en route for coffee, we drive to Matlock where we stop for lunch. The town is on the River Derwent among woodland and hills, with dramatic views of the peaks and

craggs. After lunch, we visit Haddon Hall which belongs to His Grace the Duke of Rutland and is probably the most complete and authentic example of a medieval and manorial home to be seen in England. Restoration was completed in the 1930s and there are beautiful terraced gardens. After tea, we proceed to Harrogate arriving early evening at the Hotel St. George which is privately owned and managed. The attractive Victorian hotel is spacious, elegant and comfortable. There is a lift and colour television in all bedrooms.

Saturday The morning is free in Harrogate which became famous when it was fashionable to 'take the waters'. Harrogate is known as the 'Garden Resort' and in the Spring the Stray is covered in crocuses. In the afternoon, there is an excursion to Castle Howard, the largest house in Yorkshire.

It is set in magnificent parkland and can be seen for miles around. Castle Howard was designed by Vanbrugh and contains a fine collection of pictures, statuary and furniture. In the costume galleries in the stable court are the largest private collection of 18th-20th century dress in Britain.

Sunday Stopping en route for coffee, we arrive in Stamford for lunch. The charming stone-built town has many interesting old houses and used to be an important wool centre. After lunch, we visit Burghley House, England's largest and grandest Elizabethan house. Built by William Cecil, 1st Lord Burghley and Lord High Treasurer to Queen Elizabeth 1st, it has been the home of the Cecils and Exeters for over 400 years. Burghley is famous for its beautiful painted ceilings, silver fireplaces, superb collection of over 700 works of art, tapestries, furniture and Verrio's masterpiece the Heaven Room. We return direct stopping for refreshments. Home approximately 2100.

English Lakes

4 days £83.00
single room £88.00
supplement per person for room with private bathroom
£5.50

Thursdays 12 June and 28 August

Prices include:

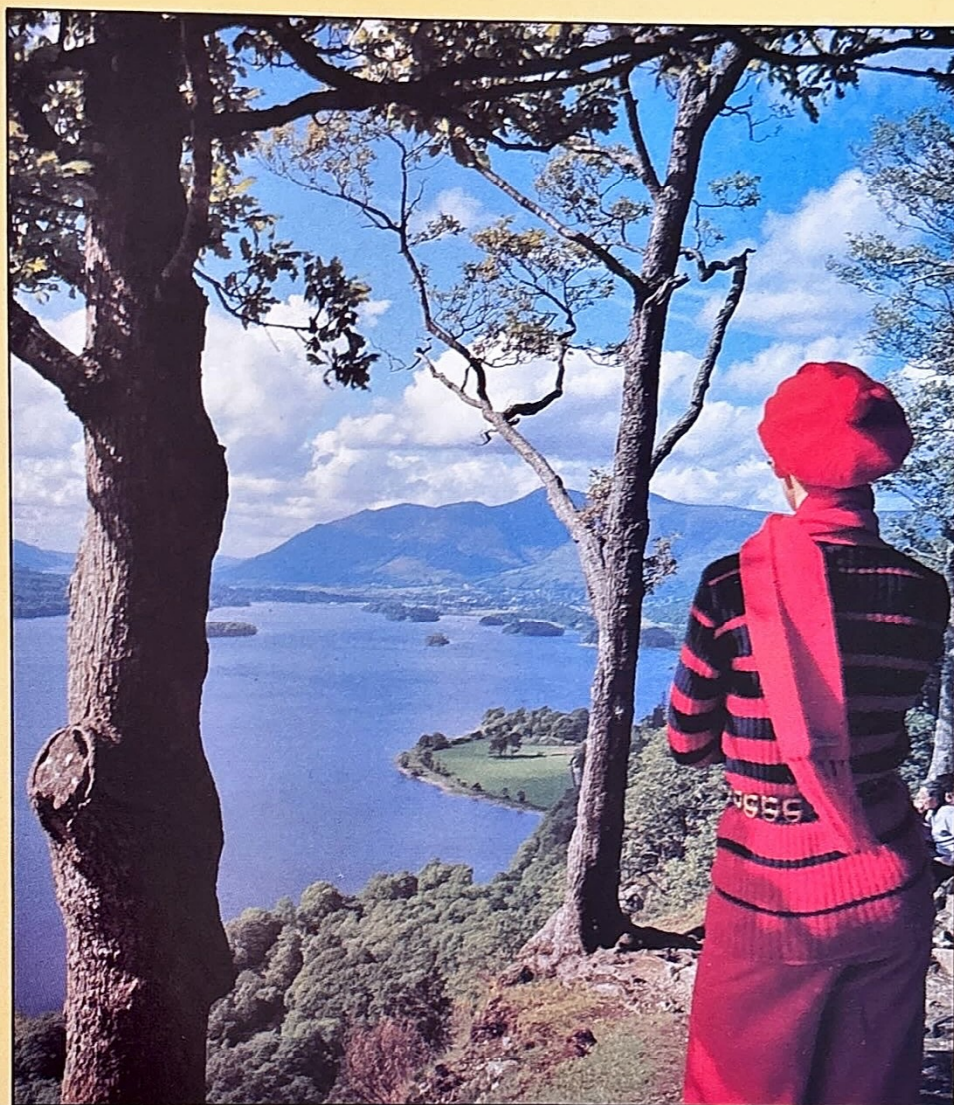
- Travel in coach with reclining seats.
- 3 nights dinner, bed and breakfast at Derwentwater Hotel near Keswick (AA 3-star, Egon Ronay recommended, telephone 0596 72538).
- Ferry across Lake Windermere.

Thursday Epsom 0800 (other points group N3 back page). Stopping en route for coffee, we arrive in Lichfield for lunch. The city is dominated by the Cathedral's three graceful sandstone spires, known as 'The Ladies of the Vale'. In the market place is Dr. Johnson's birthplace which is now a museum. Stopping for tea, we continue to Portinscale arriving early evening at the Derwentwater Hotel which is delightfully situated in its own private gardens which slope down to the edge of Derwentwater. The hotel has a lift, spacious lounges, delightful cocktail bar and fine dining room. Surrounded by woods and mountains, the village of Portinscale enjoys the peacefulness one expects to find in Lakeland yet is only a mile from Keswick.

Friday We go via Ullswater and Brothers Water across the lofty Kirkstone Pass to Windermere where we stop for lunch at Bowness, a popular resort on an attractive bay. In the afternoon we cross Windermere by steamer, then go through Hawkshead, Coniston and Ambleside to Grasmere where you can visit Dove Cottage, the former home of the poet Wordsworth. Grasmere is also noted for its perfume and gingerbread. We return via Thirlmere to Portinscale.

Saturday In the morning, we visit Keswick which is on the northern extremity of Derwentwater, the widest of the lakes. Near the main square is Greta Hall which was home of the poet Robert Southey. In the afternoon, we go via Bassenthwaite Lake and Crummock Water to Buttermere, a beautiful valley, in which Buttermere Lake is hemmed in by high mountains. The tea stop is in Cockermouth, one of the oldest towns in west Cumbria, and the birthplace in 1770 of William Wordsworth. It will be possible to visit Wordsworth House, the pleasant garden of which is mentioned in his 'Prelude'.

Sunday We go via Appleby-in-Westmorland and Brough across the Pennines stopping en route



for coffee. The lunch stop is in Harrogate, a spa town with dignified Victorian architecture, banks of flowers and well-planned open spaces. We return direct stopping en route for refreshments. Home approximately 2100.

Derwentwater.

Northumbria and Lumley Castle

4 days £92.00
single room £97.00

Fridays 20 June and 29 August

Prices include:

- Travel in coach with reclining seats.
- Dinner on Friday and Sunday night, Elizabethan Banquet on Saturday night and 3 nights bed and breakfast at Lumley Castle Hotel, Chester-le-Street (AA 3-star, Egon Ronay recommended, all rooms with private bathroom, telephone 0385 885326).
- Admission to Housesteads Fort and Washington Old Hall.

Friday Epsom 0800 (other points group N3 back page). Stopping en route for coffee, we drive to Newark-on-Trent where we stop for lunch. The town has a cobble-stoned market place, two attractive 14th century inns and the ruins of Newark Castle overlooking the River Trent. We continue along the Great North Road and stop for tea in Richmond which is beautifully situated above the River Swale and associated with the song

'Lass of Richmond Hill'. Early evening we arrive at Lumley Castle Hotel which was built in the 13th century and stands in beautiful parkland between the ancient cities of Durham and Newcastle. The hotel overlooks a wooded gorge on one side and the town on the other. It is the ancestral home of the 12th Earl of Scarborough, the present descendant of the Lumley-line. Facilities include television in all bedrooms and a heated swimming pool.

Saturday In the morning we drive along the old Roman Military Road to Housesteads Fort, one of 17 forts placed every 3-7 miles along Hadrian's Wall as quarters for the troops. The central area was occupied by granaries, workshops and a headquarters building which included a temple. We stop for lunch in Hexham where you can see the interesting Priory Church. Later in the afternoon, we visit the 17th century Washington Old Hall, where George Washington's ancestors lived. In the evening, there is an Elizabethan

Banquet held in the romantic candlelight splendour of the majestic Baron's Hall in Lumley Castle. You will be welcomed and attended by the gracious Ladies of the Court in their colourful period costumes, served with mead, wine and succulent dishes, and traditionally entertained.

Sunday We drive to Alnwick where we stop for lunch. Alnwick Castle belongs to the Percy family and was built to deter marauding Scots. After lunch, if the tides are suitable, we go via the causeway to Holy Island where there is a restored castle and ruins of a priory. Should the tides not be suitable, we visit the Grace Darling Museum in Bamburgh where there are relics of the heroine who rescued nine survivors from a shipwreck. The tea stop is in Berwick-on-Tweed, the northernmost town of England which was once a great port of Scotland.

Monday Stopping en route for coffee, we arrive in Harrogate for lunch. The town has dignified Victorian architecture, banks of flowers and well-planned open spaces. We continue south making refreshment stops on the way. Home approximately 2100.

Welsh Coast and Mountains

5 days £117.00
single room £125.50

Wednesdays 18 June and 10 September

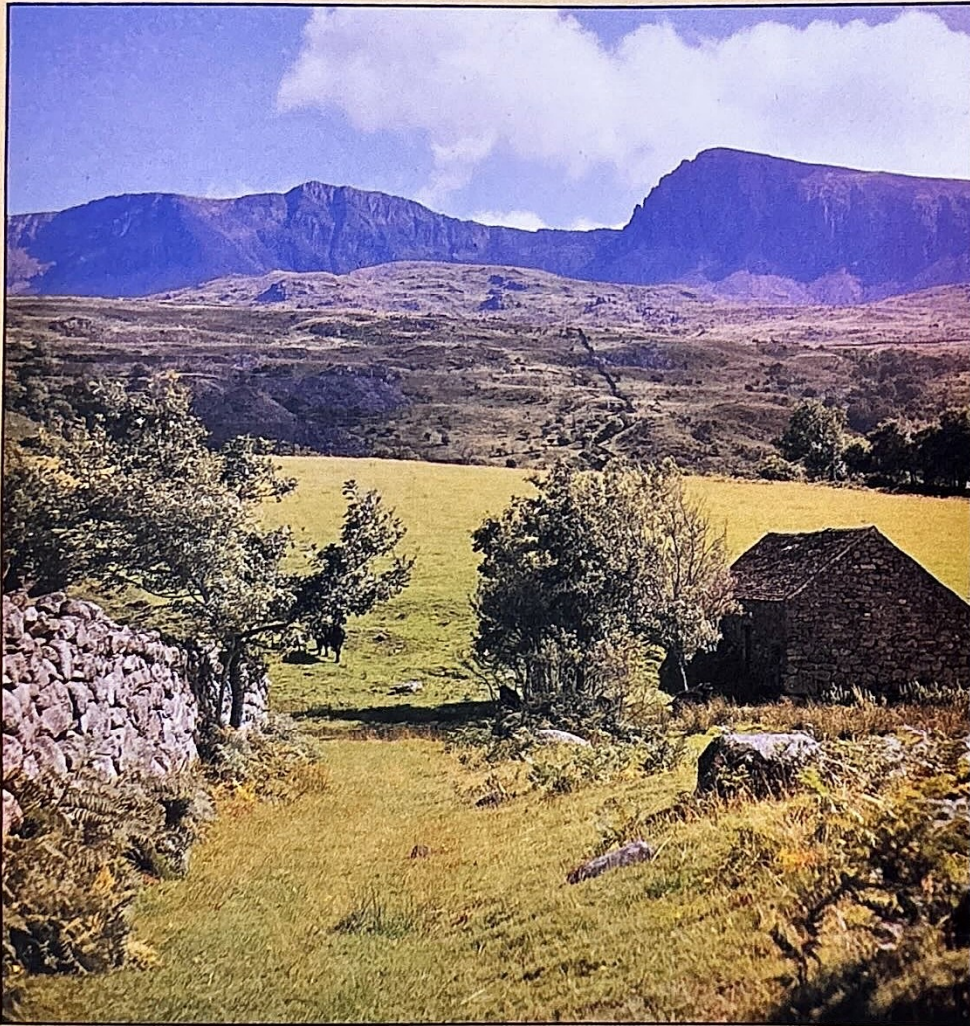
Prices include:

- Travel in coach with reclining seats.
- 2 nights dinner, bed and breakfast at the St. George's Hotel, Llandudno (AA 3-star, Egon Ronay recommended, all rooms with private facilities, telephone 0492 77544).
- 2 nights dinner, bed and breakfast at the Cliff Hotel, Gwbert-on-Sea (AA 3-star, Egon Ronay recommended, all rooms with private bathroom, telephone 0239 3241).

Wednesday Epsom 0800 (other points group N3 back page). We stop for coffee in Henley-on-

Thames, a pleasant riverside resort famous for its regatta. Crossing the Chilterns, we continue via Dorchester-on-Thames and Woodstock into the Cotswolds through Moreton-in-Marsh and Broadway to the Vale of Evesham. The lunch stop is in Worcester which has a majestic Cathedral overlooking the River Severn. In the afternoon, we continue via Kidderminster, Bridgnorth and Shrewsbury across the border into Wales stopping in Llangollen for tea. Llangollen is situated in a vale surrounded by woods, meadows and

Welsh mountains.



mountains and is home of the International Eisteddfod. We go on via Maes yr Ychen Mountain, Ruthin and the Vale of Clwyd to the North Wales coast arriving early evening in Llandudno. St. George's Hotel overlooks the beautiful promenade and bay. There is a lift and all bedrooms have colour television.

Thursday In the morning, you can stop in Llandudno or go on an excursion to Bodnant Garden (National Trust, admission extra). One of the finest coastal views in Britain can be seen from the Cable Car running up the Great Orme in Llandudno. Bodnant Garden is amongst the finest in the country and contains flowering shrubs, trees, rhododendrons and magnolias. In the afternoon, you can go on an excursion via Conwy and the Menai Bridge to Anglesey where the Druids made their fiercest stand against their Roman conquerors. The tea stop is in Beaumaris, one of the most attractive towns in Wales with a splendid medieval moated castle.

Friday We leave Llandudno and drive along the Vale of Conwy to Betws-y-coed (sanctuary in the wood) and Blaenau Ffestiniog which is famous for its slate quarries. The coffee stop is in Dolgellau, a picturesque little town with buildings made of local dark slate. Later we pass through Machynlleth to Aberystwyth for lunch. The popular resort is on Cardigan Bay at the mouth of two rivers. We drive on to Gwbert-on-sea and check in at the Cliff Hotel which is in a superb position on a headland overlooking the bay. Hotel facilities include an outdoor swimming pool, a 9-hole golf course and television in most bedrooms. Sometimes seals can be seen offshore.

Saturday We stop for coffee in the pleasant country town of Cardigan on market day, then proceed via the picturesque port of Fishguard to St. David's for lunch. St. David's is named after the patron saint of Wales and is Britain's smallest cathedral city. We go on via Haverfordwest and Pembroke to Tenby for tea. Tenby is an attractive resort with narrow streets and houses, shops and cafes built against the ruins of the old town walls. There is a colourful harbour and beautiful sandy bays. Early evening we arrive back at the hotel where a dance is usually held on Saturday nights.

Sunday We go through Cenarth which is picturesquely situated on the River Teifi and the busy little market town of Newcastle Emlyn towards Llandovery and Brecon which has the ruins of a castle. The lunch stop is in Ross-on-Wye, a lovely old town overlooking a horseshoe bend on the River Wye with fine views of the Welsh hills. In the afternoon we go through Cheltenham into the Cotswolds via Burford and Witney to Oxford for tea. The world-famous University city has over 30 colleges and it is possible to walk round some of the quadrangles. Home approximately 2030.

Snowdonia and Anglesey

3 days £48.00
single room £52.00
supplement per person for room with private bathroom £3.00

Fridays 16 May and 8 August

Prices include:

- Travel in coach with reclining seats.
- 2 nights dinner, bed and breakfast at the Royal Victoria Hotel, Llanberis (telephone 028 682 253).
- Admission to Portmeirion.

Friday Epsom 0800 (other points group N3 back page). We go via the Thames Valley and Chiltern Hills, stopping en route for coffee before driving through Chipping Norton into the Cotswolds and Vale of Evesham. The lunch

stop is in Worcester which has a majestic Cathedral overlooking the River Severn. In the afternoon, we go via Kidderminster and Shrewsbury across the border into Wales stopping in Llangollen for tea. Llangollen is situated in a vale surrounded by woods, meadows and mountains. We continue via Betws-y-coed and Capel Curig across the Pass of Llanberis to Llanberis. The Royal Victoria Hotel is situated between the twin lakes of Peris and Padarn at the foot of the spectacular Llanberis Pass. To the west stands Snowdon, the highest mountain in England and Wales.

Saturday In the morning we visit Portmeirion, one of the show-places of Wales and a product of the imagination and enterprise of the architect Sir Clough Williams-Ellis. The village is similar in

spirit to Portfino in Italy and surrounded by wild gardens full of exotic plants. In the afternoon we drive to Caernarvon where you can see the magnificent castle and scene of the investiture of Prince Charles in 1969. Later we drive across the Menai Bridge to Anglesey where the Druids made their fiercest stand against their Roman conquerors. The tea stop is in Beaumaris, one of the most attractive towns in Wales with a splendid medieval moated castle.

Sunday Stopping en route for coffee, we drive to Chester for lunch. The ancient walls of the former Roman city are wonderfully preserved and there have been recent excavations on an amphitheatre. There are streets full of black and white half-timbered houses, old taverns and a beautiful Cathedral. Refreshment stops are made on the return journey. Home approximately 2045.

Pembrokeshire Coast

3 days £65.00 (October £54.50)
single room £69.00 (October £58.50)

Fridays 18 July and 3 October

Prices include:

- Travel in coach with reclining seats.
- 2 nights dinner, bed and breakfast at the Imperial Hotel, Tenby (AA 3-star, all rooms with private facilities, telephone 0834 3737).

Friday Epsom 0800 (other points group N3 back page). Making a coffee stop en route, we cross the Severn Bridge and drive to Cardiff where we stop for lunch. The great seaport city on the Bristol Channel has been the capital of Wales since 1955. Cardiff has a spacious Civic Centre and a castle built on the site of a Roman fort.

Later in the afternoon we stop for tea in Carmarthen, birthplace of the wizard Merlin. Standing on a bluff above the river, the town is majestically crowned by the ruins of a Norman castle. We arrive early evening at the Imperial Hotel which is on the sunny side of Tenby with steps right down to the beach. The hotel has a lift and all bedrooms with colour television.

Saturday The morning is free in Tenby, an attractive resort with narrow streets, houses, shops and cafes built against the ruins of the old town walls. There are beautiful sandy bays and a colourful harbour. You can go on a launch to Caldy Island which has an ancient priory church and a modern monastery where perfumes produced by Cistercian monks are on sale. In the afternoon

we go via Pembroke which has an impressive castle, to St. David's for tea. St. David's is named after the patron saint of Wales and is Britain's smallest cathedral city.

Sunday We go via the Vale of Tywi to Llandovery, then through the Brecon Beacons National Park to Abergavenny for lunch. The town is on the River Usk and surrounded by mountains. After lunch, we continue to Monmouth through the deep, wooded valley of the lower Wye past Tintern Abbey to Chepstow and the Severn Bridge. The tea stop is in Bath and you will have a little time to see the Roman Baths and Pump Room which are Britain's most complete Roman remains. The city was a popular spa in Georgian times and many fine Georgian buildings survive. We return via Chippenham, Marlborough and Newbury stopping en route for refreshment. Home approximately 2100.

SCOTLAND

Royal Deeside

8 days £179.50
single room £202.00

Saturdays 14 June, 12 July and 9 August

Prices include:

- Travel in coach with reclining seats.
- Dinner, bed and breakfast on the first night at the Five Bridges Hotel, Gateshead (AA 4-star, Egon Ronay recommended, all rooms with private bathroom, telephone 0632 771105).
- Admission to Glamis Castle grounds.
- 5 nights dinner, bed and breakfast at the Royal Darroch Hotel, Cults (AA 3-star, all rooms with private bathroom, telephone 0224 48811).
- Admission to Pitmedden Garden and the Palace of Holyrood House.
- Dinner, bed and breakfast on the last night at the George Hotel, Chollerford (AA 3-star, Egon Ronay recommended, all rooms with private bathroom, telephone 043 481 205).

Saturday Epsom 0800 (other points group N3 back page). Stopping en route for coffee, we drive to Grantham for lunch. The ancient town has some fine old coaching inns and an attractive market square. We stop for tea in Ripon which has a fine Cathedral and many interesting old buildings in the market square. Early evening, we arrive in Gateshead at the Five Bridges Hotel which is in the middle of the town. There is a lift and all rooms are well equipped.

Sunday We drive through Northumberland and across the border into Scotland stopping for coffee in Melrose at the centre of Sir Walter Scott Country. The lunch stop is in Edinburgh which is known as 'Athens of the North'. In the afternoon, we go across the Forth Bridge and stop for tea at Glamis Castle which was designed in the style of a French chateau and built from locally quarried stone. The Queen Mother spent her childhood at Glamis, and Princess Margaret was born there in 1930. We arrive early evening at Cults which is a quiet village only 3 miles from the centre of Aberdeen. The Royal Darroch is one of the leading hotels in the Aberdeen area and only a few minutes walk from the River Dee. All bedrooms are beautifully appointed and have colour television.

Monday We stop for coffee in Huntly, an attractive town situated at a point where the River Bogie joins the River Deveron. The journey continues via the Speymouth Forest to Elgin for lunch. Since the 12th century Elgin has been a Royal Burgh and town of considerable importance. It has splendid shopping facilities and the remains of a beautiful Cathedral. In the afternoon we visit a whisky distillery in Dufftown for a guided tour.

Tuesday The day is free to explore Aberdeen and the surrounding countryside. Aberdeen is the

third biggest fishing port in Great Britain and Scotland's largest holiday resort. It lies between two famous salmon rivers, the Dee and the Don, and on the west faces the North Sea. The city has fine granite buildings, sandy beaches and beautiful parks which have earned Aberdeen the 'Britain in Bloom' trophy several times in the last few years.

Wednesday We go on a day tour of Royal Deeside. Passing through Banchory, Aboyne and Ballater we reach Balmoral, the grounds of which will be open to the public in June and July. Balmoral has been the summer home of the Royal Family for over 100 years since Queen Victoria chose Deeside as her holiday centre. Nearby is Cranthie Church where without formality or ceremony the Royal Family join the parishioners in worship. The lunch stop is in Braemar, a Deeside resort village 1100 feet up in the Highlands, world famous for its Royal Highland Gathering. In the afternoon, you can visit Braemar Castle or go on a chairlift to the summit of Cairnwell Mountain. The romantic 17th century castle is on a bluff overlooking the Dee and has been in the ownership of the same family for several hundred years. Later we visit the Falls at Linn of Dee.

Thursday We go north to the Moray coast and stop for lunch in Banff, a seaport and resort at

the mouth of the River Deveron. In the afternoon we drive through Macduff to Fraserburgh which has a lighthouse. We stop for tea at Pitmedden Gardens, the centrepiece of 93 acres of woodland and farmland set in Aberdeenshire's most fertile farming district. The beautiful 17th century garden is laid out in formal style with pavilions, fountains and sundials.

Friday We follow the coastal road through Stonehaven, Montrose, and Arbroath to Dundee for coffee. Next we cross the Tay and Forth Bridges arriving back in Edinburgh for lunch and a little sightseeing. There will be a short tour visiting the Palace of Holyrood House, official residence of Her Majesty the Queen when in Scotland. In the afternoon, we go via Lauderdale to Jedburgh for tea. Jedburgh was once a favourite residence of Scottish kings. Later we cross the border back into England and drive along Redesdale to Chollerford. The George Hotel is set in peaceful rural surroundings with pleasant gardens leading down to the river bank. Not far from the hotel is the Roman Wall.

Saturday Stopping en route for coffee, we drive to York for lunch and a little sightseeing. York is one of the finest medieval cities in Europe. It has old city walls, streets overhung by gables and the Minster with its magnificent towers and priceless stained-glass windows. We return direct, stopping en route for refreshments. Home approximately 2030.

Braemar Castle.



Oban and Western Highlands

8 days £168.50 (September £177.50)
single room £177.50 (September £186.50)

Saturdays 17 May and 13 September

Prices include:

- Travel in coach with reclining seats.
- Dinner, bed and breakfast on the first night at the Imperial Hotel, Newcastle-upon-Tyne (AA 3-star, all rooms with private bathroom, telephone 0632 815511).
- 5 nights dinner, bed and breakfast at the Great Western Hotel, Oban (AA 3-star, all rooms with private bathroom, telephone 0631 3101).
- Dinner, bed and breakfast on the last night at the County Hotel, Dumfries (AA 2-star, telephone 0387 5401).

Saturday Epsom 0800 (other points group N3 back page). Making a coffee stop en route, we drive to Newark-on-Trent for lunch. The town has a cobble-stoned market place, two attractive 14th century inns and the ruins of a castle overlooking the River Trent. The tea stop is in Ripon which has a fine Cathedral and very tall cross. Early evening, we arrive at the Imperial Hotel in Newcastle-upon-Tyne. The hotel has a lift, heated swimming pool and television in all bedrooms.

Sunday We drive through Northumberland and across the border into Scotland stopping for coffee in Jedburgh, once a favourite residence of Scottish kings. The lunch stop is in Edinburgh and there will be a short tour to see the highlights of the Scottish capital. We stop for tea in Callander, familiar as the 'Tannochbrae' in 'Dr. Finlay's Casebook', and continue via Inverlochty to Oban arriving early evening at the Great Western Hotel.

Situated in the centre of Oban's sea front, the Great Western commands a superb view over the harbour on the Firth of Lorne and beyond the scattered isles of Kerrera, Mull and Lismore. Facilities in the hotel include a lift, spacious and restful lounges, fine dining room and cocktail bar.

Monday The morning is free in Oban and you can visit the glassworks. Overlooking the town is an unusual tower and near the little granite cathedral is the ruin of a castle. In the afternoon, there is an excursion to Inveraray, a beautiful white-walled town and hereditary seat of the Dukes of Argyll whose castle has been the seat of the Campbell clan since the early 15th century.

Tuesday We go via Ballachulish to Fort William for coffee. Fort William overlooks Loch Linnhe and is in the shadow of Ben Nevis, Britain's highest mountain. Next we drive along the romantic 'Road to the Isles' stopping for lunch in the small fishing village of Mallaig where steamers leave for the Isle of Skye and Outer Hebrides. 8 miles south is where Bonnie Prince Charlie arrived in 1745 and left the following year, never to return. We return to Fort William for tea.

Wednesday The whole day is at leisure for shopping and sightseeing. You can further explore Oban or go on a steamer excursion to Mull or Iona. Mull is a beautiful island of moorland, forest and

peaks and Iona is the cradle of Scottish Christianity.

Thursday We drive to Loch Leven and along Glencoe, one of Scotland's wildest and most celebrated glens which runs between some magnificent mountains to Rannoch Moor. The journey continues via the Bridge of Orchy to Tyndrum where we stop for lunch. Late afternoon, we arrive back in Oban.

Friday We leave Oban and drive south along the banks of Loch Lomond stopping en route for coffee. The lunch stop is in Balloch, a resort on the southern shore of Loch Lomond. In the afternoon, we cross the Firth of Clyde and go through Kilmarnock where Johnny Walker started to blend whisky, to Cumnock and along Nithsdale to Dumfries. The County Hotel is situated in the main street within easy walking distance of Burn's House and the beautiful river with salmon leap. Bonnie Prince Charlie established his headquarters in the hotel in 1745. After dinner, for an extra charge, you can join in a Scottish Party Night with dancing and singing. The hotel has a lift and colour television in all bedrooms.

Saturday We stop at Greta Green to see the blacksmith's shop where runaway couples from England used to be married. Crossing the border from Scotland back into England we continue south stopping en route for coffee and arriving for lunch in Knutsford, an attractive town with narrow streets and old black and white houses. We continue direct, stopping en route for refreshments. Home approximately 2030.

Loch Lomond, Trossachs and Edinburgh

4 days £79.50
single room £84.50

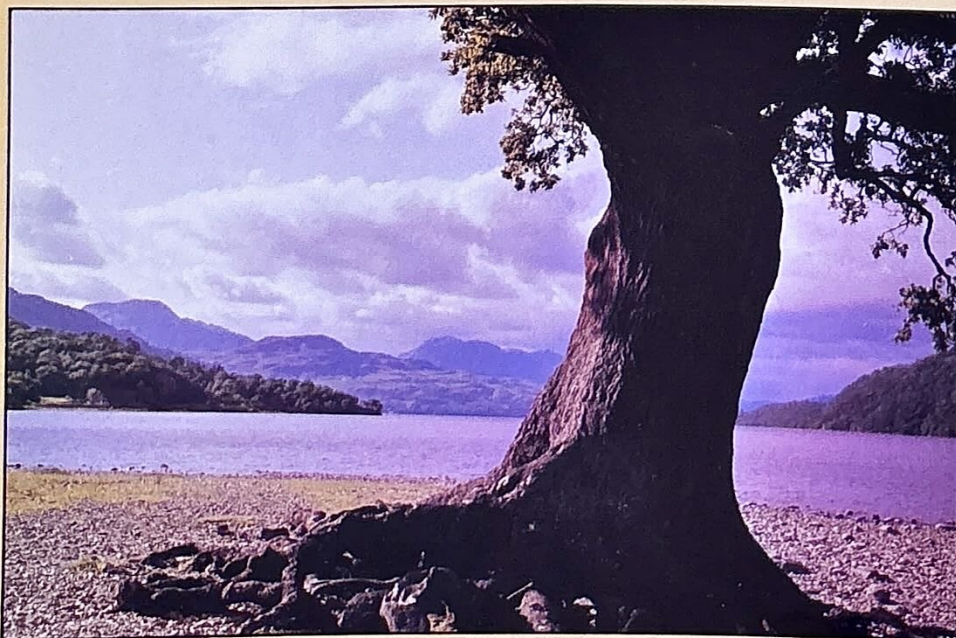
Wednesdays 11 June, 2 July, 6 August and 3 September

Prices include:

- Travel in coach with reclining seats.
- Dinner, bed and breakfast on the first night at the County Hotel, Dumfries (AA 2-star, telephone 0387 5401).
- Dinner, bed and breakfast on the second night at the Golden Lion Hotel, Stirling (AA 3-star, all rooms except singles with private bathroom, telephone 0786 5351).
- Admission to Stirling Castle and the Palace of Holyrood House.
- Dinner, bed and breakfast at the Imperial Hotel, Newcastle-upon-Tyne (AA 3-star, all rooms with private bathroom, telephone 0632 815511).

Wednesday Epsom 0730 (other points group N2 back page). We drive along the Thames Valley to Woodstock and head north-west stopping in Knutsford for lunch. Knutsford is an attractive town with narrow streets and old black-and-white houses. In the afternoon, we continue via Lancashire and Cumbria beyond the Scottish border to Greta Green where we stop to see the blacksmith's shop where runaway couples from England used to be married. We arrive early evening in Dumfries at the County Hotel which is situated in the main street within easy

Loch Lomond.



walking distance of Burn's House and the beautiful river with salmon leap. Bonnie Prince Charlie established his headquarters in the County Hotel in 1745. After dinner, you can join in a Scottish Party Night with dancing and singing (extra charge). The hotel has a lift and colour television in all bedrooms.

Thursday We go via Nithsdale to Kilmarnock where Johnny Walker started to blend whisky. Later we cross the Firth of Clyde and stop for lunch in Balloch, on the southern shore of Loch Lomond. We continue along Duke's Road to the Trossachs for tea. Often called 'the Highlands in miniature', the Trossachs lie between three lochs and the Lowlands with birch-covered mountains, dramatic crags, tumbling streams, moorland and glen. The romantic appeal was stimulated when Sir Walter Scott's novel Rob Roy and his poem 'The Lady of the Lake' started a rush of tourists to the Trossachs early last century. You will probably have time to go on a steamer excursion on Loch Katrine. We drive via Callander, familiar as the 'Tannochbrae' of Dr. Finlay's Casebook, to Stirling. The Golden Lion Hotel is situated in the centre of the town. There is a lift and all rooms have colour television.

Friday After breakfast, there will be a short visit to Stirling Castle which stands on a sheer 250-ft crag and dates from the 15th century. We drive on to Edinburgh for a short tour to see the Castle, the Royal Mile and the Palace of Holyrood House, official residence of Her Majesty the Queen when in Scotland. Later you will have time for lunch and a little shopping in Princes Street. The tea stop is in Melrose in the centre of Sir Walter Scott country. We continue through Jedburgh to England, crossing Northumberland and arriving early evening in Newcastle-upon-Tyne. The Imperial Hotel has a lift, heated swimming pool and all bedrooms with television.

Saturday Stopping en route for coffee, we arrive in York for lunch. York has old city walls, medieval streets overhung by gables and the Minster with its magnificent towers and priceless stained-glass windows. Returning direct, we stop en route for refreshments. Home approximately 2115.

IRELAND

Southern Ireland

8 days £214.00
single room £238.50

Saturday 13 September

Prices include:

- Travel in coach with reclining seats.
- Return crossing by Sealink ferry from Fishguard to Rosslare.
- Dinner, bed and breakfast on the first and last night at White's Hotel, Wexford (AA 3-star, all rooms with private bathroom, telephone Wexford 22311).
- Dinner, bed and breakfast on Sunday and Monday night at Kenmare Bay Hotel, Kenmare (AA 3-star, all rooms with private facilities, telephone Kenmare 41300).
- Dinner, bed and breakfast on Tuesday and Wednesday night at the Royal George Hotel, Limerick (AA 2-star, all rooms with private bathroom, telephone Limerick 44566).
- Afternoon tour of Dublin with professional guide.
- Dinner, bed and breakfast on Thursday night at the Montrose Hotel, Dublin (AA 3-star, Egon Ronay recommended, all rooms with private bathroom, telephone Dublin 693311).

Saturday Epsom 0600 (other points group N1 back page). Stopping en route for coffee, we proceed via the Severn Bridge into Wales via the Vale of Glamorgan and Carmarthen to Fishguard. Boarding the afternoon ferry, we arrive early evening in Rosslare and continue to Wexford checking in at White's Hotel. The hotel is in the town centre and has been established over 200 years. Wexford is an ancient historical town of narrow winding streets steeped in history and legend.

Sunday We drive through New Ross to Waterford, home of the famous glass, then via the pleasant seaside resort of Youghal to Cork for lunch and a little sightseeing. Cork is a charming city mainly contained on an island with picturesque bridges and peaceful backwaters. After lunch, we visit Blarney Castle to "kiss the Blarney Stone" and to acquire the gift of eloquence. We continue via Macroom, the home of the Penn family, and the Derrymassaggert Mountains arriving early evening at the Kenmare Bay Hotel. The hotel is tucked away where the Kenmare River meets the Atlantic and there are fine views of the blue-green mountains and deep rich valleys.

Monday We go on a day tour of the Ring of Kerry which is said to be one of the most outstanding scenic drives in Europe. Leaving Kenmare, we drive along Molls Gap, then down the lake-shore road past Ladies View to Muckross House with its beautiful gardens set along the shores of the Lake. We visit Killarney which is beautifully situated between three famous lakes in a green valley, and Killorglin, home of the famous Puck Fair. Going on through the beautiful village of Glenbeigh, we reach the coast where you can see Inch Strand and the Dingle Peninsula. We pass Valencia Island where the first transatlantic cable message was received and continue through Waterville along the cliff tops skirting the Atlantic Ocean. Driving along the Kenmare River into the Kerry Hills, we arrive back in Kenmare.



Irish cottage

Tuesday We go via Abbeyfeale and Adare with its picturesque cottages, to Limerick, arriving lunchtime at the Royal George Hotel. You will have time to check into your rooms and obtain lunch before going on the afternoon excursion. We drive via Ennis to the seaside resort of Lahinch and the fishing village of Liscannor. Visiting the Cliffs of Moher which tower majestically 700 feet above sea level, we stop further along the coast to see the beautiful view of the Aran Islands situated a little way off the Clare coastline. After dinner, you can visit the "Glory Hole" in the Royal George, a typical Irish kitchen pub with traditional music.

Wednesday The whole day is at leisure for shopping and sightseeing. Re-built in 1961, the Royal George Hotel is in the city centre within easy reach of the shops and many of Limerick's famous sites. Situated at the mouth of the River Shannon, Limerick has a history dating from the middle of the ninth century. Points of interest include sections of the old city wall, the medieval King John's Castle, the Treaty Stone and St. Mary's Cathedral founded in 1168. Easily reached by public transport is the medieval fortress of Bunratty Castle and a Folk Park where you can view farmhouses, fishermen and labourers' cottages typical of the old way of life. It is also possible to go on a boat trip on the River Shannon.

Thursday Stopping en route for coffee, we drive direct to Dublin arriving lunchtime at the Montrose Hotel. You will have time to check into your rooms and obtain lunch before going on a guided tour of Ireland's capital. Situated on the great sweep of Dublin Bay, Dublin is one of Europe's finest capitals. There are many spacious squares and fine streets with splendid buildings. The Montrose Hotel looks out on the green campus of University College on the main road to the city centre. There are pleasant lounge bars, a health centre, a hairdressing salon and a souvenir shop.

Friday We drive into the centre of Dublin for further sightseeing and shopping. After an early lunch, we leave the Irish capital and go via the heather-strewn Wicklow Mountains to Glendalough, the site of a former monastic settlement and home of St. Kevin. Later we visit the 'Meeting of the Waters', made famous by the poet Thomas Moore. We continue via Arklow, Gorey and Enniscorthy to arrive back in Wexford. Time permitting, we hope to visit the John F. Kennedy Memorial Park built in honour of the late President. After dinner, you can meet the locals in the Shelmalier bar or go on a short walking tour conducted by the Old Wexford Society.

Saturday After an early breakfast, we leave Wexford and return to Rosslare for the ferry back to Fishguard. Arriving in Wales at lunchtime, we commence the homeward journey stopping en route for refreshments. Home approximately 2100.

CHANNEL ISLANDS

Jersey by Air

4 days £110.00
single room £115.00

Friday 10 October

Prices include:

- Return transfer to Southampton Airport in coach with reclining seats.
- Return flight to Jersey by British Island Airways or British Airways.
- Return transfer to the Ommaroo Hotel.
- 3 nights dinner, bed and breakfast at the Ommaroo Hotel, Havre des Pas, St. Helier (AA 3-star, Egon Ronay

recommended, all rooms except singles with private facilities, telephone 0534 23493).

Friday Departure times awaiting flight details (points group W back page). We drive to Southampton Airport and board a flight by British Island Airways (ITO/UK2/110) or British Airways (ITOB/2/06) to Jersey. A coach meets you at Jersey Airport and takes you to the Ommaroo Hotel.

Monday The morning is free to have a last look at the island. In the afternoon, a coach takes you to Jersey Airport for the flight back to Southampton. Return time awaiting flight details.

Jersey See Jersey by Air 8 days (next page).

Ommaroo Hotel, Havre des Pas, St. Helier The hotel is personally supervised by the proprietor and has been in the same family for over 50 years. Situated on the sea front, this first class hotel is only 10 minutes walk from the centre of St. Helier. Facilities include 2 lifts, several comfortable lounges, a television lounge, a sun terrace, a cocktail lounge and all bedrooms with television.

CHANNEL ISLANDS

Jersey by Air

8 days £159.50 (September £186.00)
single room £168.50 (September £195.00)
supplement per person for room with private bathroom
£12.50

Sundays 11 May or 21 September

Prices include:

- Return transfer to Southampton Airport in coach with reclining seats.
- Return flight to Jersey by British Island Airways or British Airways.
- Return transfer to the Hotel Savoy, St. Helier.
- 7 nights dinner, bed and breakfast at the Hotel Savoy, St. Helier (AA 2-star, telephone 0534 30012).

First day Departure times awaiting flight details (points group W back page). We drive to Southampton Airport and board a flight by British Island Airways (ITO/UK2/110) or British Airways (ITOB2/06) to Jersey. A coach meets

you at Jersey Airport and takes you to the Hotel Savoy.

Last day A coach takes you to Jersey Airport for the flight back to Southampton. Return time awaiting flight details.

Jersey Jersey is an island of great natural beauty with superb scenery and beaches which rival any that can be seen in Europe. With a warm climate, golden sands, sheltered bays and sparkling blue seas, the island is an ideal holiday resort. Passports are not necessary for British subjects and there are no currency restrictions. Boat excursions operate regularly to the other Channel Islands and to France. Coach trips run every morning, afternoon and evening to all parts of the island. There is a wide variety of goods in the shops, exempt from value added tax and

cigarettes, perfumes, wines, spirits and jewellery at duty-free prices. At night, Jersey comes alive and the sweep of St. Aubin's Bay is lit up with hundreds of lights. Nightclubs and cabaret-spots are alive and you can enjoy the freedom of licensing hours and duty-free drinks.

Hotel Savoy, St. Helier The hotel was originally a luxury mansion and built in the nineteenth century. Standing in its own grounds, in a select residential part of St. Helier, the hotel is conveniently situated for enjoying all the amenities of the island, whether it be entertainment, beaches, shops or sightseeing. Arrangements can be made at the reception for sightseeing tours or trips to France and the other Channel Islands. There is a spacious dining room, tastefully furnished and relaxing lounges, an attractive cocktail bar and an outdoor swimming pool with pretty surrounding sun patio.

Jersey by Sea

8 days £156.00
single room £165.00
supplement per person for room with private bathroom
£12.50

Sunday 14 September

Prices include:

- Return transfer to Weymouth in coach with reclining seats.
- Return crossing to Jersey by Sealink ferry.
- Return transfer to the Hotel Savoy.
- 7 nights dinner, bed and breakfast at the Savoy Hotel, St. Helier (AA 2-star, telephone 0534 30012).

First day Epsom 0800 (other points group W1 back page). We drive to Weymouth stopping en route for coffee. Next we board the Sealink ferry for the lunchtime crossing to Jersey. Numbered seats are reserved and meals and refreshments are available at reasonable prices. We arrive at Jersey at approximately 2045 and are conveyed to the Hotel Savoy.

Last day After an early breakfast, a coach takes us to the terminal for the Sealink ferry back to Weymouth. We will arrive in Weymouth at approximately 1515 and there will be a tea stop on the way home. Home approximately 1945.

Jersey See Jersey by Air 8 days. ▲

Hotel Savoy See Jersey by Air 8 days. ▲

Jersey flower fields.



Jersey Bonus Breakaway

5 days £99.50 (May £118.00)
single room £105.50 (May £124.00)
supplement per person for room with private bathroom
in April £7.50

Thursdays 24 April and 8 May

Prices include:

- Return travel to Weymouth in coach with reclining seats.
- Return crossing to Jersey by Sealink Ferry.
- Return travel to the hotel.
- 4 nights dinner, bed and breakfast in St. Helier. April stopping in the Hotel Savoy (AA 2-star, telephone 0534 30012), May stopping in the Ommaroo Hotel (AA 3-star, Egon Ronay recommended, all rooms except singles with private facilities, telephone 0534 23493).
- Voucher for 1 litre of spirits and 2 litres of wine.

Thursday Epsom 0800 (other points group W1 back page). Stopping en route for coffee, we drive direct to Weymouth and board the Sealink ferry for the lunchtime crossing to Jersey. Numbered seats are reserved and meals and refreshments are available at reasonable prices. We arrive at approximately 2045 and are conveyed to the hotel.

Friday, Saturday and Sunday You will have three days at leisure to explore St. Helier and the rest of the island. In the Springtime the parks and gardens are a mass of colour.

Monday After an early breakfast, a coach takes

us back to the ferry terminal for the return journey. We will arrive in Weymouth at approximately 1515 and there will be a tea stop on the way home. Home approximately 1945.

Jersey See Jersey by Air 8 days. ▲

Hotel Savoy See Jersey by Air 8 days. ▲

Ommaroo Hotel See Jersey by Air 4 days (page 17).

CHANNEL ISLANDS

Guernsey Bonus Breakaway

5 days £99.50
single room £105.50
Thursday 1 May

- Prices include:
- Return travel to Weymouth in coach with reclining seats.
 - Return crossing to St. Peter Port by Sealink ferry.
 - Return transfer to the Green Acres Hotel.
 - Courtesy service into St. Peter Port on Friday, Saturday and Sunday.
 - 4 nights dinner, bed and breakfast at Green Acres Hotel, St. Martin's (AA 2-star, all rooms with private facilities, telephone 0481 35711).
 - Voucher for 1 litre of spirits and 2 litres of wine.

Thursday Epsom 0800 (other points group W1 back page). Stopping en route for coffee, we drive direct to Weymouth and board the Sealink ferry for the lunchtime crossing to Guernsey. Numbered

seats are reserved and meals and refreshments are available at reasonable prices. We arrive in Guernsey at approximately 1815 and are conveyed to Green Acres Hotel.

Friday, Saturday and Sunday You will have three days at leisure to explore the picturesque island which has tranquillity and immense natural beauty. Many sandy beaches and beautiful secluded bays are dotted around the island's rugged coastline and in the Spring there is an abundance of flowers. Each day, there will be a free bus service from the hotel to St. Peter Port, leaving in the morning and returning in the afternoon. St. Peter Port with its markets and shops clustered in narrow streets and arcades, is built on cliffs overlooking a colourful, lively harbour. Boat trips operate regularly from St. Peter Port to the other Channel Islands and to

France. You can purchase liquor, cigarettes, jewellery, perfume and photographic equipment at duty-free prices.

Monday After breakfast, we return to the terminal for the ferry back to Weymouth. You will be able to exchange your voucher for a litre of spirits and 2 litres of wine. There will be a tea stop on the return journey from Weymouth. Home approximately 1945.

Green Acres Hotel Green Acres nestles in its own grounds on the edge of the town of St. Martin's in the midst of Guernsey's most beautiful parish. Ten minutes walk from the hotel is Fermain Bay, one of the island's loveliest bays. It is tempting to spend all day lazing by the pool or just ambling along the quiet country lanes that surround the hotel. There is colour television in all bedrooms, a residents' lounge opening on to a sun terrace, two bars where you can meet the locals and a restaurant offering English and Continental dishes.

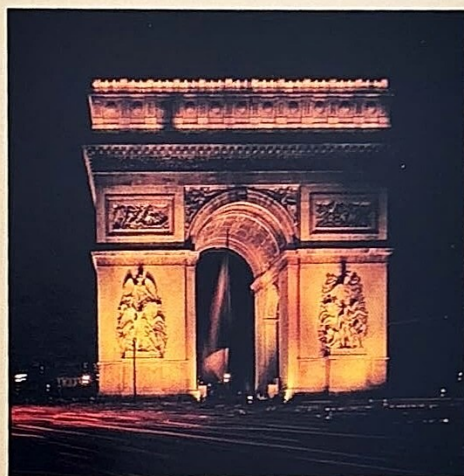
CONTINENT

Paris and Versailles

3 days £68.00
single room £79.50
supplement for dinner on Friday and Saturday night £10.00
Fridays 22 August and 28 November

- Prices include:
- Travel in coach with reclining seats.
 - Return ferry crossing to France.
 - 2 nights bed and breakfast at the Carlton Hotel, Paris (3-star, all rooms with private facilities, telephone 010 33 1 526 98 16).

Friday Epsom 0700 (other points group SE1 back page). We drive to the port and board a ferry to France (lunch facilities on board). After a 1½ hour crossing, we proceed to Paris stopping en route for tea. Early evening we reach the Carlton



Hotel which is in the boulevard de Rochechouart near Montmartre and Sacre Coeur.

Saturday In the morning we go on a tour of Paris making short stops at the Church of Notre Dame, Louvre, Eiffel Tower, Champs Elysees and Arc de Triomphe. After lunch, we go on an excursion to the Palace of Versailles which was built for Louis XIV. The Palace is set in magnificent gardens with fountains, grottoes, ponds and statues. In the evening, you will be able to enjoy some of the Paris nightlife – maybe stroll around the streets or visit one of the many clubs.

Sunday After breakfast, you will have time for a little more sightseeing. Stopping en route for refreshments, we return to the port for the late afternoon ferry back to England. Home approximately 2100.

Arc de Triomphe.

Gastronomic Weekend

3 days £102.00
single room £109.50
Friday 24 October

- Prices include:
- Travel in coach with reclining seats.
 - Return ferry crossing to France.
 - 2 nights bed and breakfast at the Grand Hotel or Hotel de la Paix, St. Quentin (AA 2-star, all rooms with private facilities, telephone 010 33 23 62 69 77).
 - 4-course dinner on Friday and Saturday night and Gala lunch on Sunday.

Friday Epsom 0730 (other points group SE2 back page). We drive to the port and board a cross-Channel ferry to France (lunch facilities on board). After the 1½ hour crossing, we continue via Montreuil and Hesdin to Arras where we stop for tea. We arrive early evening in St. Quentin and check in at the Grand Hotel or Hotel de la Paix. Later we go to a restaurant for a 4-course dinner including wine.

Saturday We go on a day tour of Champagne Country. In Reims we stop at a famous Champagne cellar for a guided tour explaining the unique way in which Champagne is made. After the visit, we drive to the town centre where there will be time to obtain lunch and visit the magnificent Cathedral. In the afternoon, we drive along the Champagne Route across undulating land where the vines grow. We go through the heart of the French countryside

MENU	
Aspic de Caneton aux Oranges en Vinaigrette <i>Duck in aspic with oranges in vinaigrette</i> ou/for	
Marbré de Ris de Veau, Chantilly aux Noisettes <i>Veal sweetbreads in a cream sauce</i> ou/for	
Escalopes de Saumon George Sand <i>Filletts of salmon George Sand</i> ou/for	
Biscuit de Brochet <i>Pike Savouries</i> ou/for	
Filet de Truite Étuvé à l'Oseille <i>Fillet of trout poached with sorrel</i> ou/for	
Punch Frappé au Champagne <i>Chilled champagne punch</i> ou/for	
Feuilleté Florentin aux Abats Nobles <i>Offal served in a spinach sauce</i> ou/for	
Flan de Caneton Edouard Mignon <i>Duck flan Edouard Mignon</i> ou/for	
Filet d'Agneau en Croûte, Coulis à l'Estragon <i>Lamb in puff pastry with tarragon</i> ou/for	
Ronde des Fromages <i>Cheeses</i> ou/for	
Pain aux Noix <i>Nut bread</i> ou/for	
Crèmes glacées ou Sorbets – Mignardises <i>Ice cream or sorbet</i> ou/for	
Chariot de Pâtisserie <i>Pastry trolley</i> ou/for	
Tarte Tatin (2) – 30 min <i>Upside-down apple pie</i> ou/for	
Café	

Lunch on Sunday

winding our way along narrow lanes to Epernay. Here we go on a conducted tour of the world famous Mercier Champagne cellar by electric train. After tasting the sparkling Champagne, we return to St. Quentin. In the evening, there will be another 4-course dinner including wine.

Sunday The morning is at leisure in St. Quentin which took its name from St. Quintinus who was martyred in the 4th century. The town has many interesting old buildings including the town hall which has a carillon of 37 bells and the Church which was begun in 1230. Before leaving St. Quentin, there will be a Gala lunch (wine not included). Stopping en route for refreshment, we return to the port for the ferry back to England. Home approximately 2200.

Chateaux and Vineyards of the Loire

5 days £130.50
single room £152.00

Monday 23 June

Prices include:

- Travel in coach with reclining seats.
- Return crossing by Sealink ferry from Newhaven to Dieppe.
- Dinner, bed and breakfast on the first night at the Grand Hotel de Normandie, Lisieux (AA 3-star, all rooms with private bathroom, telephone 010 33 31 62 16 05).
- 2 nights dinner, bed and breakfast at the Hotel de Bordeaux, Tours (AA 3-star, all rooms with private facilities, telephone 010 33 47 05 40 32).
- Dinner, bed and breakfast on the last night at Novotel Chartres (AA 3-star, all rooms with private bathroom, telephone 010 33 37 21 80 30).

Monday Epsom 0700 (other points group SE1 back page). We drive to Newhaven and board the Sealink ferry for the 1000 crossing to Dieppe (lunch facilities on board). Proceeding via the Tancarville Bridge, we stop for tea in Honfleur which has a picturesque old harbour. We arrive early evening in Lisieux which is a place of pilgrimage as the early home of St. Teresa.

'The Little Flower'. Many miracles are attributed to St. Teresa.

Tuesday Stopping for coffee in Alençon, we proceed via Le Mans, famous for its 24 hour race, to Saumur for lunch. The town is beautifully situated on the left bank of the Loire. Saumur is famous for its wines and after lunch we visit some caves for tasting. Later we see the picturesque town of Chinon which has grown up on the banks of the river in the shadow and protection of a huge castle. We stop at the Chateau of Villandry which is noted for its tiered gardens, canals, fountains and pergolas. Arriving early evening in Tours, we check in at the Hotel de Bordeaux which is in the town centre near the old quarter.

Wednesday The morning is free to explore Tours. There are parks and gardens with rare trees and plants and the Cathedral quarter has many interesting old buildings. We stop for lunch in Chenonceaux where you can see the famous chateau, one of the most interesting and striking in the Loire Valley. Later we visit Amboise, a

charming old town dominated by a chateau. Before returning to Tours, we visit another wine cellar at Vouvray.

Thursday In the morning we visit Chambord, the largest chateau in the Loire, standing on the river bank in a park of forest land encircled by a wall. The lunch stop is in Blois; its pride and finest exhibit is the chateau. In the afternoon, we stop for tea in Cloyes, a beauty spot on the River Loir. We continue via Chateaudun to Chartres where you will be able to visit the famous Cathedral on a hill in the city centre. Novotel Chartres is just outside the city.

Friday We go via Dreux and Evreux to Rouen where we stop for sightseeing and lunch. Rouen has so many links with the past that it is known as the 'Museum Town of France'. It has many associations with Joan of Arc and one of the finest cathedrals in Europe. Later in the afternoon we return to Dieppe for the ferry back to Newhaven. Home approximately 2215.

Burgundy and Champagne

5 days £129.00
single room £147.00

Monday 29 September

Prices include:

- Travel in coach with reclining seats.
- Return ferry crossing to France.
- Dinner, bed and breakfast on the first night at Novotel Fontainebleau Ury (AA 3-star, all rooms with private bathroom, telephone 010 33 1 422 48 25).
- 2 nights dinner, bed and breakfast at the Hotel de Bourgogne, Beaune (2-star, all rooms with private facilities, telephone 010 33 80 22 22 00).
- Dinner, bed and breakfast on the last night at the Hotel de la Paix, Reims (AA 3-star, all rooms with private facilities, telephone 010 33 26 40 04 08).

Monday Epsom 0700 (other points group SE1 back page). We drive to the port and board a cross-Channel ferry to France (lunch facilities on board). Making refreshment stops en route, we arrive early evening Novotel Fontainebleau Ury. The modern hotel has a pleasant garden with a swimming pool.

After lunch, we explore the Cote de Beaune visiting Pommard, Meursault and other famous 'wine' villages. There will be one or two stops for tasting and we also hope to include a visit to the 11th century Chateau la Rochpot.

Thursday We leave Beaune and follow the "route des grands crus" through the famous Cote de Nuits, passing chateaux and little villages tiled in multi-coloured Burgundian style. Going through Nuits-St. Georges and Gevrey-Chambertin we reach Dijon, ancient capital of the Dukes of Burgundy and now famous for its mustard. The lunch stop is in Troyes, a Roman city and early centre of Christianity. In the afternoon, we drive to Epernay and go on a conducted tour of a Champagne cellar. After tasting the sparkling Champagne, we drive along the

'Champagne Route' across undulating land where the vines grow. We wind our way along narrow lanes to Reims, arriving early evening at the Hotel de la Paix which is in the town centre not far from the Cathedral. The hotel has a lift and all bedrooms with television.

Friday We leave Reims and go via St. Quentin along a fast tree-lined road across open country which has many First World War associations. The lunch stop is in Arras, famous for wall tapestries. We reach the port and board the afternoon ferry back to England. Home approximately 2000.

Vineyard in Burgundy.



Tuesday Skirting the Forest of Fontainebleau, we continue through prosperous farming country, woods and vineyards stopping en route for coffee. Arriving in Beaune at lunch time, we check in at the Hotel de Bourgogne which is to the south of the town centre near the ramparts. The afternoon is free to explore Beaune on foot. Situated in the centre of the Burgundy vineyards, the town has many features to delight the lover of art. In the early Middle Ages, the town was the residence of the Dukes of Burgundy before they settled in Dijon.

Wednesday In the morning we visit the Hotel Dieu which was built in the mid 15th century and is still a busy hospital. The building has an elegant high roof covered with coloured slates in intricate patterns. Many wine-growers have bequeathed vineyards to the hospital and every November there is a public auction of the wines which maintains a free health service to the sick of Beaune. In the hospital museum are some fine tapestries and a famous painting of the Last Judgment. Next to the hospital is the ancient town house of the Dukes of Burgundy and the Museum of Wine where the history of the cultivation of the vine and the development of Burgundy wine are amply illustrated. Later you can go far beneath the town and visit the underground cellars to taste some local wine.

Dutch Bulbfields

3 days £79.50
single room £90.50

Fridays 18 April and 2 May

Prices include:

- Travel in coach with reclining seats.
- Return ferry crossing to Zeebrugge.
- 2 nights dinner, bed and breakfast at the Waldorf Hotel, Antwerp (AA 3-star, all rooms with private bathroom, telephone 010 32 31 30 99 50).
- Admission to the Keukenhof Gardens.

Friday Epsom 0730 (other points group SE2 back page). We drive to Dover and board the Townsend-Thoresen ferry to Zeebrugge (lunch facilities on board). Arriving in Belgium, we continue direct to Antwerp reaching the Waldorf Hotel early evening. The hotel is in a quiet area just outside the city centre. There is a lounge, a cocktail bar and a lift to all floors.

Saturday After breakfast, we drive to the Keukenhof Gardens to see one of the greatest flower shows in the world. In the 70 acre park are millions of flowers, trees, a heather garden, flowering shrubbery, beautiful cascades and ponds, greenhouses, restaurants and a pavilion with exhibitions and demonstrations. In the afternoon, we go along the 'Tulip Route' passing the bulbfields which are a mass of colour. The tea stop is in Amsterdam, one of the most fascinating cities in the world with hundreds of canals and nearly a thousand bridges. You will have time for a little shopping and sightseeing before returning to Antwerp.



Keukenhof Gardens.

Sunday After breakfast, you will have time for a little sightseeing in Antwerp. You can visit

the home of the artist Rubens. The lunch stop is in Ghent which is known as the 'City of Flowers' and has many rivers crossed by picturesque stone bridges. Returning to Zeebrugge, we board the ferry for the crossing back to Dover. Home approximately 2200.

Holland in Springtime

4 days £101.50
single room £121.00

Thursday 24 April

Prices include:

- Travel in coach with reclining seats.
- Return ferry crossing to Zeebrugge by Townsend Thoresen.
- 3 nights dinner, bed and breakfast at the Zuiderpark Hotel, Rotterdam (2-star, all rooms with private facilities, telephone 010 31 10 85 00 55).
- Admission to the model town of Madurodam.
- Admission to the Keukenhof Gardens.

Thursday Epsom 0730 (other points group SE2 back page). We drive to Dover and board the Townsend-Thoresen ferry to Zeebrugge (lunch facilities on board). Crossing the border from Belgium into Holland, we continue direct to Rotterdam arriving at the Zuiderpark Hotel in

time for a late dinner. The modern hotel is situated in Zuider Park only 10 minutes drive from the city centre.

Friday In the morning, we stop in Delft where we are hoping to arrange a visit to see the famous pottery being made. We stop for lunch in the Hague, administrative centre and seat of government of the Netherlands. The city is 2½ miles from the North Sea and linked by canal with Rotterdam and Amsterdam. Richest of all Dutch cities, the Hague has many fine buildings including three palaces. In the afternoon, we visit the model town of Madurodam. You will see medieval and supermodern districts, motorways and railways with moving traffic, ports and canals with ships sailing and an airport.

Saturday We drive to the Keukenhof Gardens to see one of the greatest flower shows in the world.

In the 70-acre park are millions of flowers, trees, a heather garden, flowering shrubbery, beautiful cascades and ponds, greenhouses, restaurants and a pavilion with exhibitions and demonstrations. After lunch, we drive along the 'Tulip Route' making a short stop at a flower farm. The tea stop is in Amsterdam, one of the most fascinating cities in the World with hundreds of canals and nearly a thousand bridges. You will have time for a little shopping or a canal trip. After dinner, there is an excursion to the Euromast observation tower in Rotterdam (admission extra). The tower is 600 feet high and overlooks the seaport and modern city.

Sunday We take the North Sea coastal route to Middelburg where we stop for coffee. Middelburg is an attractive and traditional Dutch town where some of the people still wear national costume. The lunch stop is in Bruges, 'Venice of the North'. Bruges is a beautiful city with picturesque canals and quaint little bridges. We go on to Zeebrugge and board the ferry back to Dover. Home approximately 2200.

Rhine and Moselle Valleys

4 days £107.00
single room £121.50

Thursdays 21 August and 18 September

Prices include:

- Travel in coach with reclining seats.
- Dinner, bed and breakfast on Thursday night at the Ramada Hotel, Liege (AA 4-star, all rooms with private bathroom, telephone 010 32 41 32 59 19).
- Dinner, bed and breakfast on Friday night at the Hotel Traube or Aumüller, Rudesheim (all rooms with private facilities, telephone Rudesheim 3038).
- Dinner, bed and breakfast on Saturday night at the Hotel Bedford, Brussels (AA 3-star, all rooms with private bathroom, telephone 010 32 2 5127840).

Thursday Epsom 0730 (other points group SE2 back page). We drive to Dover and board the Townsend-Thoresen ferry to Zeebrugge (lunch facilities on board). Arriving in Belgium, we

drive to Liege stopping en route for tea. Liege is rich in history and has many interesting old buildings. The Ramada Hotel is in the town centre near the Flea Market.

Friday Crossing the frontier into Germany near Aachen, we stop for lunch in Cologne near the famous Gothic cathedral. After lunch, we cross the Rhine near Bonn and follow the east bank past 'Fairy Tale' castles to Koblenz where we stop for tea. Koblenz is situated at the meeting point of the Rhine and Moselle Valleys. Early evening, we arrive in Rudesheim, a celebrated wine-growing centre on the Rhine. After dinner, you can watch the illuminated barges floating down the Rhine or sing and dance with the locals in a wine cellar.

Saturday We retrace the journey through wine-

growing country to Koblenz and follow the Moselle Valley to Cochem where we stop for coffee. Cochem is a picturesque little town overlooking the Moselle. We stop for lunch in Monschau, a pretty little village in the Eiffel Mountains with a stream running down the main street. Late afternoon, we arrive in Brussels, the Belgium capital and administrative centre of the Common Market. The Hotel Bedford is in the city centre near the Grand Place. After dinner, you can walk around the city looking at the floodlit buildings.

Sunday You will have time for a little more sightseeing in Brussels. We arrive for lunch in Bruges, 'Venice of the North'. Bruges is a beautiful medieval city with picturesque canals and quaint little bridges. You can watch lace being made or go sightseeing by boat or horse-drawn cab. Later we return to Zeebrugge for the afternoon ferry back to Dover. Home approximately 2200.

Copenhagen Seabreak

5 days £77.00

single room £84.50

supplement per person for a berth in a two berth cabin £5.50

supplement for a single berth cabin £11.00

Tuesday 29 April

Prices include:

- Return transfer to Harwich in coach with reclining seats.
- Sea travel to Esbjerg and return with a berth in a four berth cabin with washing facilities.
- 2nd class rail return to Copenhagen with seat reservations.
- 2 nights bed and breakfast at the Penta Hotel, Copenhagen (all rooms with private facilities).
- Return coach transfer to the Penta Hotel.
- Morning sightseeing tour of Copenhagen.
- 'Copenhagen a la carte' voucher booklet.
- Services of an English speaking guide.

Tuesday Epsom 0930 (other points group SE3 back page). We stop in Colchester for lunch and make our way to Harwich to board the DFDS ship to Esbjerg.

Wednesday We arrive in Esbjerg at 1230 and continue by boat train to Copenhagen. Early evening, a coach transfers us from the station to the Penta Hotel which is well-appointed and centrally situated.

Thursday In the morning, there is a sightseeing tour of Copenhagen including the services of a courier. The remainder of the day is free for more sightseeing and browsing around the Danish capital. You can see the Little Mermaid, the changing of the guard at Amalienborg Palace, take a guided tour round the Carlsberg or Tuborg breweries or stroll around the shops. You will be given a booklet of coupons supplied by the Danish Tourist Board and the Tourist Association of Copenhagen. The coupons offer reductions on dining out, sightseeing tours, entrance fees to museums etc.

Friday You will have a little time after breakfast for further shopping and sightseeing. A coach takes us to the station for the 1145 train back to Esbjerg. The ship sails at 1730.

Saturday We arrive late morning in Harwich and return to Colchester for lunch. Home approximately 1800.

DFDS Ships

DFDS Ships are like floating 4 star hotels. There is everything you need for a relaxing, enjoyable holiday; a restaurant with Scandinavian help-yourself buffet, a cafeteria, spacious lounge, bars and shops. All the cabins are air-conditioned.

Swiss Lakes and Mountains

8 days £208.00

single room £229.00

Saturday 6 September

Prices include:

- Travel in coach with reclining seats.
- Dinner, bed and breakfast on the first night at the Hotel de la Paix, Reims (AA 3-star, all rooms with private facilities, telephone 010 33 26 40 04 08).
- 5 nights dinner, bed and breakfast at the Hotel Jahanniterhof, Lucerne (all rooms with private facilities, telephone 010 41 41 23 18 55).
- Dinner, bed and breakfast on the last night at Novotel, Luxembourg (3-star, all rooms with private bathroom, telephone 010 352 43 56 43).

Saturday Epsom 0700 (other points group SE1 back page). We drive to the port and board the ferry to France (lunch facilities on board). After the 1½ hour crossing, we proceed to Reims stopping en route for tea. The Hotel de la Paix is in the town centre not far from the Cathedral. Facilities in the hotel include a lift and television in all bedrooms.

Sunday We drive to Lucerne, stopping en route for coffee, lunch and tea. The Hotel Jahanniterhof is centrally situated in the town only a few minutes walk from Lake Lucerne. It offers traditional Swiss hospitality and is under the personal supervision of the resident proprietors.

Monday to Thursday During our stay in Lucerne, there will be a day at leisure and three excursions. One day we will visit Interlaken, the main town of the Bernese Oberland, superbly situated between two lakes. After lunch you will have the option of staying in Interlaken or going to view the magnificent snow-capped heights of the Jungfrau by cable car (extra charge). Another day, there will be a spectacular trip through the Alps visiting two famous passes — St. Gotthard and Susden. The third excursion is in the afternoon along the western shores of Lake Lucerne up the beautiful Alpine valley to the village of Engelberg set beneath the great peak of Mount Titlis. You can either visit the Benedictine monastery or take a trip by funicular or cable car (extra charge).

Friday We leave Lucerne and drive to Luxembourg stopping en route for coffee, lunch and tea. Although Novotel Luxembourg is outside the city centre, we are hoping to include a little sightseeing including the Grand Ducal Palace and Cathedral of Notre Dame.

Saturday We go via Bastogne to Brussels where we stop for lunch. The Belgian capital has many interesting old buildings and is the administrative centre of the Common Market. In the afternoon, we continue to Ostend where we board the ferry back to England. Home approximately 2300.



Lake Lucerne.

General Information

Coaches and Driver/Couriers

All the coaches we send on tour have reclining seats, overhead racks for hand baggage, reading lamps, individual forced air ventilation and wide panoramic windows with tinted glass. We do all our own maintenance.

Much of our reputation has been built on the care and efficiency of our uniformed driver/couriers. We try to keep the same drivers on the same tours so they are familiar with the routes.

Hotels

Although our choice is more limited in some areas than others, we aim to use three-star hotels on all tours. The AA star ratings and Egon Ronay recommendations are taken from 1979 guides.

Most tours include rooms with private facilities at no extra cost. Others offer rooms with private facilities as a supplement. The number of single rooms is always limited and friends are asked to share wherever possible. Where there are three persons travelling together we can usually allocate a triple room.

Groups

Small groups are welcome to book on our tours. Please contact us regarding party reductions. If you wish to hire a coach privately, we would be pleased to give you a quotation.

Departure Points and Times

Full details of departure points and times are given on the back page. You will always be set down where you were picked up.

Our main departure point in Epsom is adjacent to the railway station and near the local bus stops. The following services operate to and from Epsom:— *Trains* Regular service from Waterloo and Victoria. *Green Line Buses* 727 Gatwick-Heathrow. *London Transport Buses* 164 and 293 Morden-Epsom. *London Country Buses* 406 Kingston-Redhill, 408/470 West Croydon-Guildford/Dorking, 478 Kingston-Leatherhead. There is a taxi rank outside Epsom Station.

Please contact us if you would like information on local hotels, car parks and taxi services. The Drift Bridge Hotel (telephone Burgh Heath 52163) is opposite our Drift Bridge departure point and the White Horse Hotel (telephone Dorking 81138) is less than ten minutes walk from our picking up point in Dorking.

What is included

All coach travel is included and there is no extra charge for optional excursions. Any other services which are included in the basic price of a tour — i.e. hotel accommodation, meals, air and ferry fares, admission charges, etc. — are mentioned in each description. Most tours include half board (evening dinner, bed and breakfast). Full breakfast is provided except on the Continent where Continental breakfast is served. In the evening a three- or four-course table d'hôte dinner is provided. Coffee is usually included and except on the Continent there is nearly always a choice of menu. Luncheons are included on some tours but we usually stop in a town where you can make your own arrangements. Morning coffee and afternoon tea are not included. We make convenient stops for these.

All basic prices are per person sharing a room. Should prices fluctuate we reserve the right to adjust prices up to the time you pay the balance. Very few tours are suitable for young children although special prices are available on request. All prices include value added tax as at 1st October 1979.

Unless indicated otherwise, gratuities to hotel staff are included in the tour price. The driver's gratuity is not included. If you have been happy with his services, it is usual to give him a gratuity to show your appreciation.

Bookings

If you wish to check the availability or make a provisional reservation, please telephone Epsom 27821. A provisional reservation will lapse if the deposit and booking form are not received within three days. Seat numbers are allocated at the time of booking.

You can either book with us direct or through

one of our agents. If you are sending us a cheque through the post it is advisable to telephone first and make a provisional reservation.

A deposit of £8.00 per person (£12.00 on tours or holidays over four days) secures a booking. The balance is due six weeks prior to departure. We only remind you if the balance is overdue. If the balance is not paid in time, we may cancel the booking and retain the deposit. All bookings are made subject to our Conditions.

Late bookings

Rooming lists are sent to hotels at least four weeks before departure. An administration fee may be charged on any booking made after the rooming lists have been sent to cover telephone calls, telex charges, etc. You will have to pay a deposit before we contact the hotels but should we be unsuccessful in getting accommodation, the deposit will be returned. Bookings will be accepted up to the day before departure. Some tours are booked months in advance and we advise you to book as soon as possible to avoid disappointment.

Cancellations and refunds

Deposits are strictly non-refundable and a fee of up to 65% of the total cost will be charged on bookings cancelled within six weeks of departure. All cancellations must be made in writing to Epsom Coaches and refunds will only be made from our head office. To keep the cancellation charge to a minimum, it is advisable to cancel as soon as possible.

Insurance

We advise you to insure against personal accident, medical expenses, loss of deposit, cancellation charges, baggage and personal effects and personal money. You can either ask us to send you a proposal form or insure with your travel agent. Insurance enables you to travel with peace of mind.

Times

Everyone is kindly asked to be punctual when on tour. We have to run to schedule and cannot keep other people waiting. No liability can be accepted for anyone not arriving on time.

The return times are only approximate and meant as a guide for passengers' convenience. If someone is meeting you, you are advised to confirm the return time with the driver and telephone from the last stop.

Passports

Passports are not required for Jersey and Guernsey. If you do not possess a passport, Identity Cards can be used on the following Continental tours:— Gastronomic Weekend and Paris and Versailles. If you fill in an application form and let us have a passport-size photograph will issue an identity card free of charge. Foreign nationals have to use passports on all Continental tours.

Radios, Tape-Players and Musical Instruments

In the interest of other passengers radios, tape-players and musical instruments may not be played.

Smoking

The front twenty-four seats are reserved for non-smokers. Smoking can cause serious annoyance to other passengers. Please refrain from smoking or smoke as little as possible.

Pets

Pets may not accompany passengers.

Luggage

You will have to handle your own luggage on some island holidays. We recommend you keep your luggage to a minimum — only one medium-size suit case per person plus light hand luggage. All baggage must be clearly labelled. Luggage labels will be issued by the agent when you pay the balance.

Responsibility

The brochure is the sole responsibility of Epsom Coaches. It is not issued on behalf of and does

not commit the airlines mentioned therein. We accept no liability for any loss, damage, frustration, disappointment, injury or death arising from any accident or delay.

Inclusive arrangements

The Company only acts as an agent where inclusive arrangements are made — i.e. hotels, other carriers etc.

Road Service Licences

Some of the services advertised in this brochure are awaiting the approval of the Traffic Commissioners.

Cancellations and Amendments

Although it is seldom necessary, we reserve the right to cancel any tour or holiday. You will be notified at least six weeks prior to departure and given a full refund. The right is also reserved to alter or amend routes wherever necessary.

Errors and omissions

At the time of going to press all the details contained in this brochure are believed to be correct. We accept no liability for any errors or omissions.

Acknowledgements

We wish to thank the following for loaning us transparencies — British Tourist Authority, French Government Tourist Office, Netherlands National Tourist Office, Swiss National Tourist Office, States of Jersey Tourism Committee, Fortfield Hotel and British Leyland.

Departure Points and Times

	SE1	SE2	SE3		W1	W2	W3		N1	N2	N3	N4
Oxshott	0615	0645	0845	Drift Bridge	0730	0800	0830	Dorking	—	0650	0720	0750
Cobham	0620	0650	0850	Burgh Heath	0735	0805	0835	Great Bookham	0535	0705	0735	0805
Stoke d'Abernon	0625	0655	0855	Banstead	0740	0810	0840	Fetcham	0540	0710	0740	0810
Fetcham	0630	0700	0900	Ewell	0750	0820	0850	Leatherhead	0545	0715	0745	0815
Great Bookham	0635	0705	0905	West Ewell	0755	0825	0855	Ashtead	0550	0720	0750	0820
Leatherhead	0645	0715	0915	Epsom	0800	0830	0900	Epsom	0600	0730	0800	0830
Ashtead	0650	0720	0920	Ashtead	0810	0840	0910	Ewell	0605	0735	0805	0835
Epsom	0700	0730	0930	Leatherhead	0815	0845	0915	West Ewell	0610	0740	0810	0840
West Ewell	0705	0735	0935	Great Bookham	0820	0850	0920	Chessington North	0615	0745	0815	0845
Ewell	0710	0740	0940	Fetcham	0825	0855	0925	Hook	0620	0750	0820	0850
Drift Bridge	0720	0750	0950	Stoke d'Abernon	0830	0900	0930	Surbiton*	—	0800	0830	0900
Banstead	0725	0755	0955	Cobham	0835	0905	0935					
Coulsdon	0735	0805	1005	Byfleet	0845	0915	0945					

Esher	0605	0635	0830	• London There is a regular train service to Epsom from Waterloo and Victoria.
Hersham	0610	0640	0835	• Gatwick and Heathrow Airports The 727 Heathrow-Gatwick service passes through Epsom.
Walton-on-Thames	0620	0650	0845	• Port of embarkation You may pick up the coach at the port of embarkation.
Hurst Park	0625	0655	0850	
East Molesey	0630	0700	0855	
Surbiton	0645	0715	0915	
Hook	0655	0725	0925	
Chessington North	0700	0730	0930	

* We can not pick up in Surbiton on the following tours:— Loch Lomond, Trossachs and Edinburgh, Chester, Norwich and Norfolk Broads, Blackpool Illuminations and Southport.

Ashtead	Street Bus Stop*	Fetcham	Post Office, Cobham Road*
Banstead	Post Office, High Street*	Great Bookham	Crown Public House, Lower Road*
Burgh Heath	Bus stop opposite St. Mary's Church	Great Bookham	Beckley Parade, Guildford Road*
Byfleet	Opposite Noel Roscoe Garage	Hersham	Stephen Wilson Services, Esher Road
Chessington North	Railway Station*	Hook	White Hart, Hook Road*
Cobham	Fine Fare, High Street*	Hurst Park	Hurst Road/New Road
Coulsdon	Opposite Fairtax Travel, Brighton Road	Leatherhead	Opposite Crescent Travel, Church Street
Dorking	Opposite Dorking Halls	Oxshott	Steels Lane/Kenilworth Avenue
Drift Bridge	Bus Stop opposite Hotel	Stoke d'Abernon	Plough Public House, Cobham Road*
East Molesey	Opposite Woolworth, Walton Road	Surbiton	Freeman Hardy Willis, Victoria Road*
Epsom	Public Library, Waterloo Road	Walton-on-Thames	Opposite Barclays Bank, Church Street
Esher	Council Offices	West Ewell	Chessington Road/Danetree Road*
Ewell	Spring Bus Stop opposite Bourne Hall	West Ewell	Chessington Road/Green Lanes*

* Please check the side of the road when booking.

Booking Form

You are advised to insure against personal accident, medical expenses, loss of deposit, cancellation charges, baggage and personal effects and personal money (details on request).

Tour or holiday _____ Departure date _____

Departure point _____ Time _____

Accommodation Single _____ Double _____ Twin _____ Triple _____

Seat number(s) in the coach _____

MR MRS MISS	INITIALS	SURNAME	ADDRESS AND TELEPHONE NUMBER

Deposit of £8 per person (£12 on tours and holidays over 4 days).

Deposit £ _____ Ticket number _____ Balance due _____
(6 weeks before departure)

Full amount £ _____ Ticket number _____

I agree to the conditions of booking (see page 23).

Signature _____ Date _____

