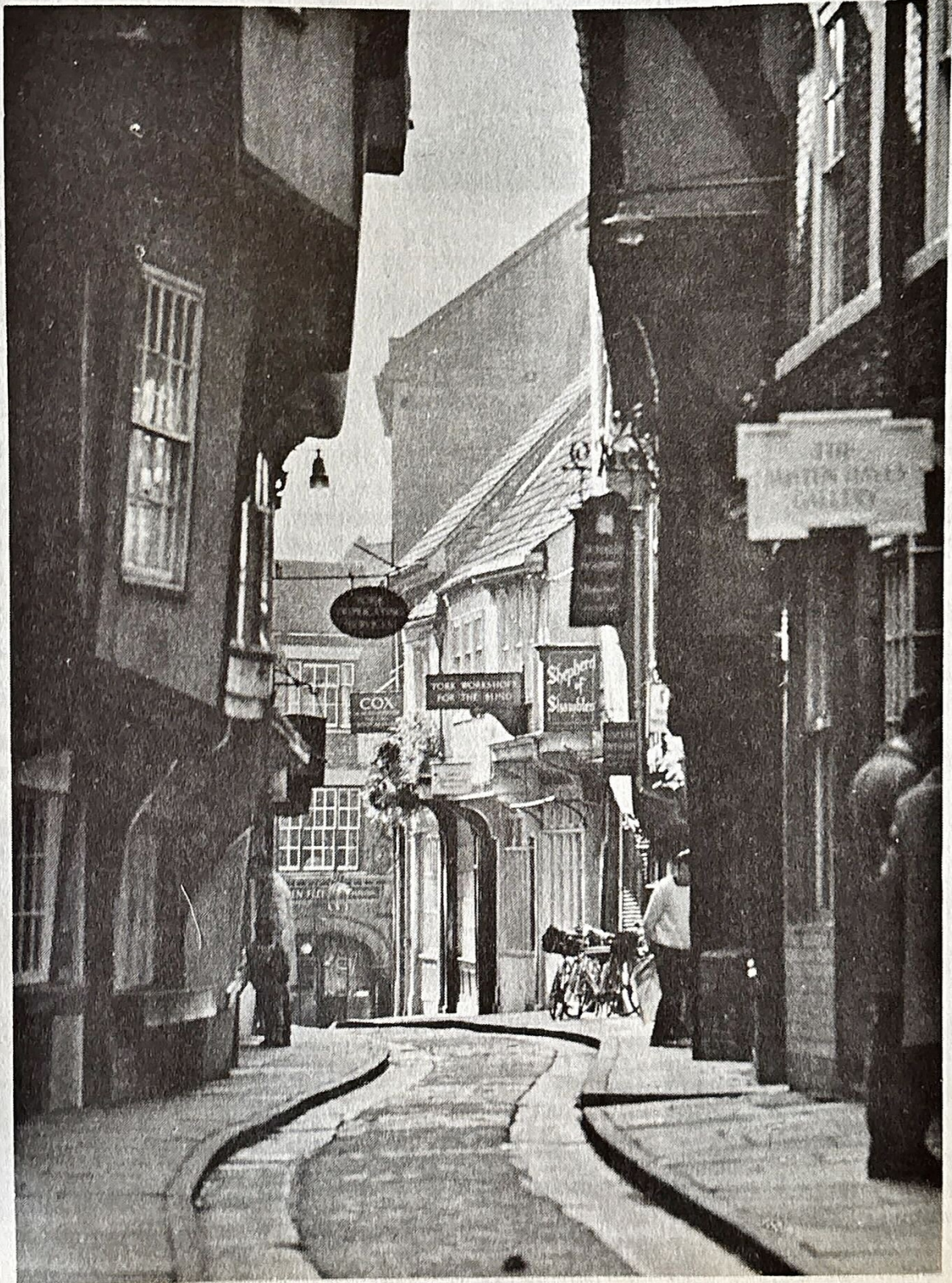




EPSOM COACHES

Touring Holidays 1972



CONTENTS

	Page
Locations of picking-up points	1
Loch Lomond, Trossachs and Edinburgh (4 days)	2
Morecambe Bay and English Lakes (3 days)	3
Isle of Man (4 days)	4
Yorkshire Dales (3 days)	5
Southport and Blackpool Illuminations (long weekend)	6
North Wales and Snowdonia (3 days)	7
Derbyshire Peaks and Dovedale (2 days)	8
Cotswolds, Welsh Valleys and Somerset (3 days)	9
Norwich and Norfolk Broads (3 days)	10
Bournemouth and New Forest (long weekend)	11
Isle of Wight (3 days)	11
North and South Devon (4 days)	12
Cornish Riviera and Land's End (4 days)	13
Cliftonville (8 day centred holiday)	14
Worthing (8 day centred holiday)	14
Conditions of booking	14
Programme	15

LOCATIONS OF PICKING-UP POINTS

The following picking-up points are described in detail, although only certain points are authorised for individual tours:-

- ASHTEAD, Street Bus Stop.
- COBHAM, Fine Fare, 29, High Street.
- EPSOM, Public Library, Waterloo Road.
- EWELL, Spring Bus Stop.
- FETCHAM, Post Office, Cobham Road.
- GREAT BOOKHAM, Beckley Cottages.
- GREAT BOOKHAM, Old Crown.
- LEATHERHEAD, Crescent Travel, 17, Church Street.
- LONGMEAD, junction with Hollymoor Lane.
- STOKE D'ABERNON, Plough.
- WALTON-ON-THE-HILL, Pond.



1971/2 touring coach

Cover photograph - Shambles, York.

LOCH LOMOND, TROSSACHS AND EDINBURGH (4 days)

£26.50

- | | |
|------------------|---------------------|
| Cheshire Plain | Loch Venochar |
| Lancashire Plain | Forth Bridge |
| Glewood Forest | Moorfoot Hills |
| Nithsdale | Teviotdale |
| Firth of Clyde | Cheviot Hills |
| Loch Lomond | Catcleugh Reservoir |
| Loch Ard | Redesdale |
| Achray Forest | Vale of York |
| Loch Achray | Charnwood Forest |
| Trossachs | |



Thursday Knutsford (lunch at the Rose and Crown Hotel in Mrs. Gaskell's 'Cranford'), Gretna Green (halt at Blacksmith's Shop), Dumfries (County Hotel).

Friday Dumfries, Cumnock, Kilmarnock, Irvine, Ardrossan, Largs, Gourock, ferry across Firth of Clyde to Dunoon (lunch at McColl's Hotel near the pier), return to Gourock by steamer, Port Glasgow, Dumbarton, Alexandria, Aberfoyle, Inversnaid (Inversnaid Hotel).

Saturday Inversnaid, Trossachs, Stirling, across Forth Bridge, Edinburgh (lunch at the Royal British Hotel in Princes Street), Galashiels, Jedburgh, Otterburn, Newcastle-upon-Tyne, Durham (Royal County Hotel).

Sunday Durham, Scotch Corner, Chesterfield (lunch at the Station Hotel near the church with the twisted spire), St. Albans (dinner at the Great Red Lion Hotel), return to Epsom at approx. 2130.

County Hotel**, Dumfries (Telephone 5401). In the town centre and near the River Nith and Burn's statue, lift, night porter, television.

Inversnaid Hotel, Inversnaid (Telephone 223). Overlooking Loch Lomond and in the heart of Rob Roy country, a few yards away from the 30 foot high waterfall of Arkley Water.

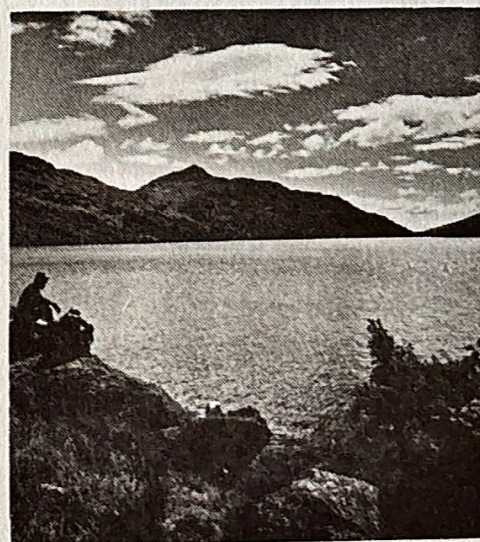
Royal County Hotel***, Durham (Telephone Old Elvet 2481). In the shadow of Durham Cathedral, extensively modernised and developed during the winter, lift, night porter.

Departures:- Thursdays, 1st June 10th August
13th July 14th September

Picking-up points and times:-

Cobham	0700
Great Bookham	0710
Leatherhead	0715
Ashted	0720
Epsom	0730
Longmead	0735
Ewell	0740

Included in the fare:- all meals and accommodation from lunch on Thursday to dinner on Sunday and the Clyde steamer fare.

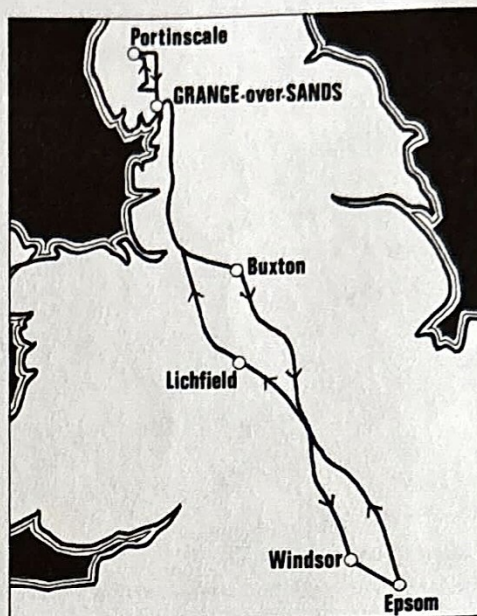


Loch Lomond

MORECAMBE BAY AND ENGLISH LAKES (3 days)

£18.00

- | | |
|-----------------|------------------|
| Chiltern Hills | Thirlmere |
| Morecambe Bay | Derwentwater |
| Windermere | Ullswater |
| Esthwaite Water | Brothers Water |
| Coniston Water | Derbyshire Peaks |
| Furness Fells | Dovedale |
| Rydal Water | Charnwood Forest |
| Wythburn Fells | Thames Valley |



Tuesday Shenstone, Lichfield (lunch at the George Hotel near the Cathedral with three spires), Levens, Grange-over-Sands (Grand Hotel).

Wednesday Grange-over-Sands, ferry across Windermere, Hawkshead, Coniston, Ambleside, Rydal, Grasmere (stop at Wordsworth's Cottage), Keswick, Portinscale (lunch at the Derwentwater Hotel overlooking the lake), Threlkeld, Troutbeck, Dockray, Patterdale, Kirkstone Pass, Grange-over-Sands (Grand Hotel).

Thursday Grange-over-Sands, Knutsford, Macclesfield, Buxton (lunch at the Palace Hotel in the watering place 1,000 feet above sea-level), Illam, Thorpe, Tissington, Ashbourne, Derby, Towcester, Buckingham, Aylesbury, Windsor (dinner at the Castle Hotel), Windsor Great Park, return to Epsom at approximately 2115.

Grand Hotel*, Grange-over-Sands (Telephone 2331).** Situated in 25 acres of beautiful grounds and overlooking Morecambe Bay, ballroom, billiard room, games room, tennis courts, putting green, television, central heating, lift, night porter.

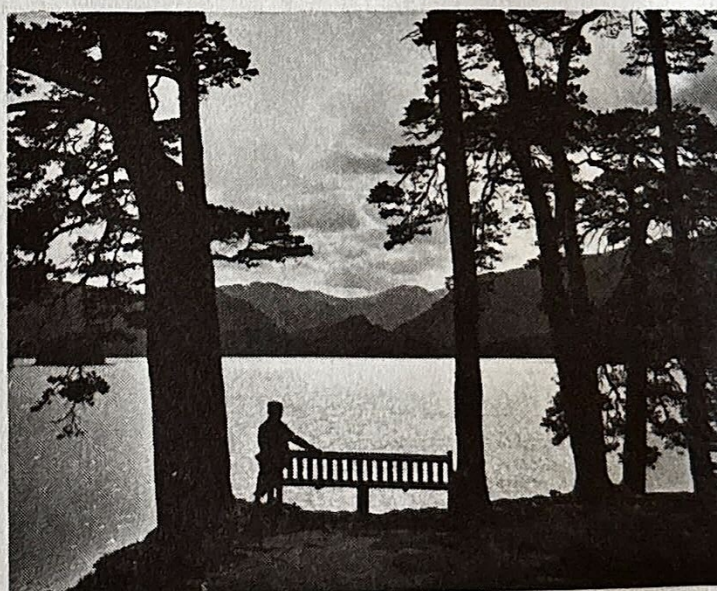
Departures:-

Tuesdays,	6th	June
	18th	July
	29th	August

Picking-up points and times:-

Cobham	0700
Great Bookham	0710
Leatherhead	0715
Ashted	0720
Epsom	0730
Longmead	0735
Ewell	0740

Included in the fare:- all meals and accommodation from lunch on Tuesday to dinner on Thursday.

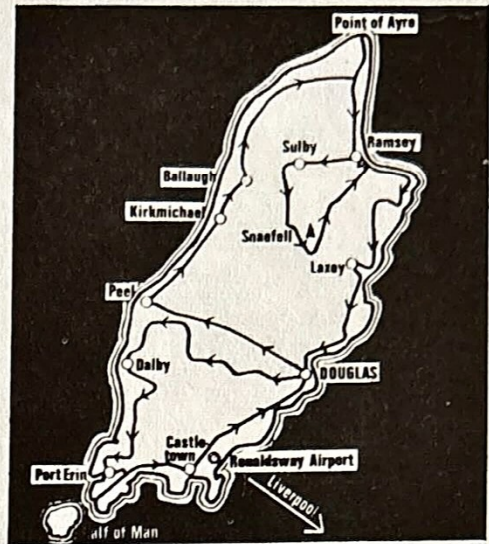


Windermere

ISLE OF MAN (4 days)

£29.50

Situated in the Irish Sea almost equidistant from Scotland to the north, Ireland to the west, Wales to the south and England to the east, the Isle of Man is 33 miles long and 12 miles broad. There is mountainous countryside of moors, woods and glens and over 100 miles of coastline, ranging from steep, rugged cliffs to vast sandy shores. The Isle of Man has its own Parliament and the Lower House (House of Keys) is the oldest parliament in the world.



Friday Lichfield (lunch at the George Hotel), Speke Airport (Liverpool), flight by Cambrian Airways to Ronaldsway Airport, coach to Douglas (Sefton Hotel).

Saturday Morning at leisure - opportunity to see the magnificent bay, expansive sandy beach, clear sea and beautiful sunken gardens. Afternoon tour - St. John's, Dalby, Port Erin, view of the Calf of Man, Castletown, Marine Drive (rugged cliff scenery), Douglas (Sefton Hotel).

Sunday Morning at leisure. Afternoon tour - Peel (home of the Manx kipper industry), Kirkmichael, Ballaugh, Point of Ayre, Ramsey, Sulby, round Snaefell (2,034 feet), Laxey (stop at "Lady Isabella" waterwheel), Onchan, Douglas (Sefton Hotel).

Monday Morning at leisure - last opportunity for shopping. After lunch, return to Ronaldsway Airport, flight to Speke Airport (Liverpool), return to Epsom at approximately 2100.

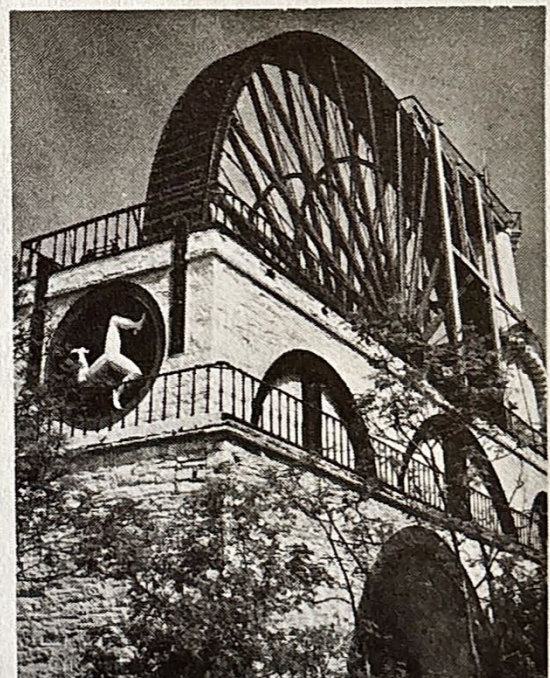
Sefton Hotel*, Douglas (Telephone 2555).** Ideally situated in the centre of Douglas Promenade with a commanding view of the whole bay, only a few minutes walk from the shopping centre, lift, night porter, central heating, colour television all bedrooms with radios.

Departure:- Friday, 29th September.

Picking-up points and times:-

Cobham	0700
Great Bookham	0710
Leatherhead	0715
Ashted	0720
Epsom	0730
Longmead	0735
Ewell	0740

Included in the fare:- all meals and accommodation from lunch on Friday to lunch on Monday, air fares, and all coach travel in the Isle of Man.

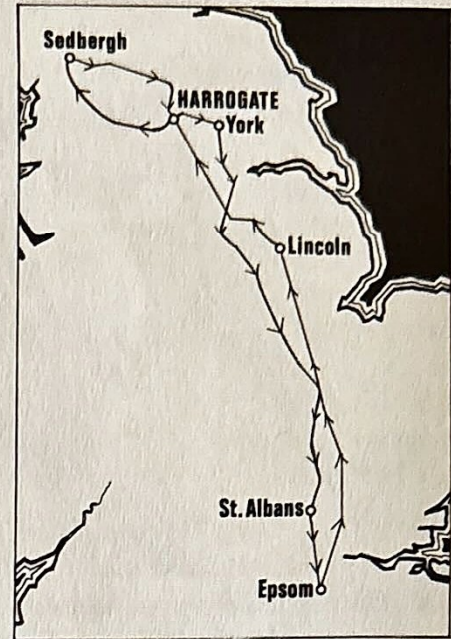


Laxey Wheel

YORKSHIRE DALES (3 days)

£19.00

West Riding
Forest of Knaresborough
Wharfedale
Rombalds Moor
Ribblesdale
Garsdale
Wensley dale
Marston Moor



Friday Ware, Buntingford, Royston, Huntingdon, Peterborough, Bourne, Sleaford, Lincoln (lunch at the Grand Hotel near the majestic triple-towered Cathedral), Gainsborough, Bawtry, Doncaster, Bentley, Adwick le Street, Ferrybridge, Wetherby, Harrogate (Granby Hotel).

Saturday Harrogate, Otley, Burley-in-Wharfedale, Ilkley, Bolton Abbey, Gargrave, Coniston Cold, Hellfield, Settle, Cowan Bridge, Kirkby Lonsdale, Sedburgh (lunch at the Bull Hotel), Garsdale Head, Hawes, Wensley, Leyburn, Masham, Ripon, Ripley, Harrogate (Granby Hotel).

Sunday Harrogate, Knaresborough, York (two hours sightseeing and lunch at the Abbey Park Hotel), Selby, New Bridge, Thorne, Bawtry, St. Albans (dinner at the Great Red Lion Hotel), return to Epsom at approximately 2130.

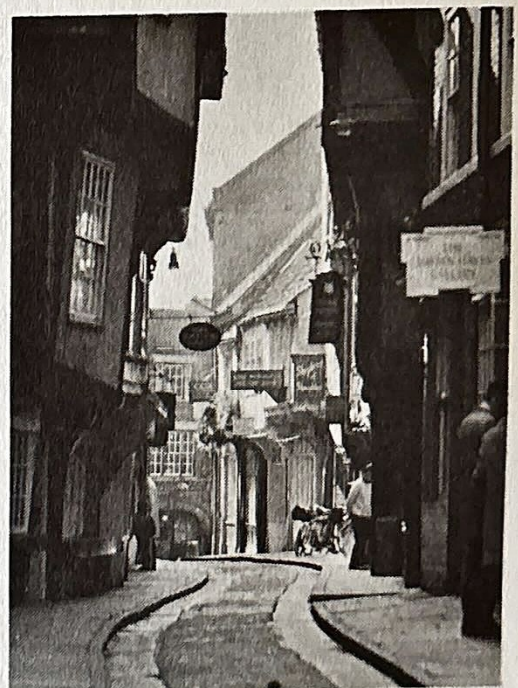
Granby Hotel, Harrogate (Telephone 3046). Ideally situated opposite the famous Stray, ten minutes from the town centre and Harlow Car Gardens, lift, night porter, all bedrooms with inter-connecting bathrooms and telephones.

Departure:- Friday, 4th August.

Picking-up points and times:-

Cobham	0700
Great Bookham	0710
Leatherhead	0715
Ashted	0720
Epsom	0730
Longmead	0735
Ewell	0740

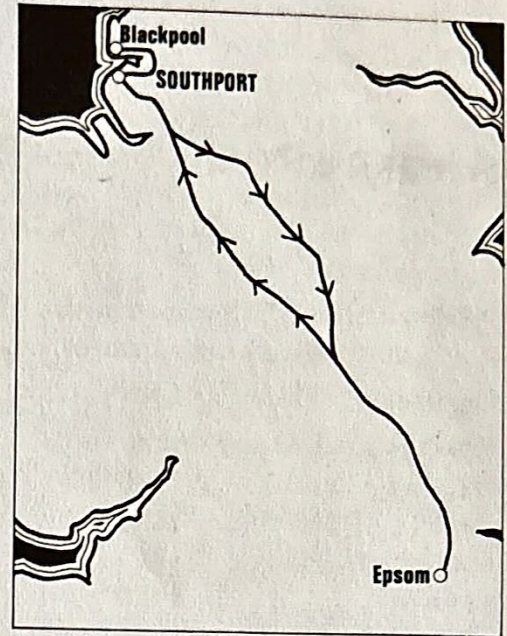
Included in the fare:- all meals and accommodation (with private bathroom) from lunch on Friday to dinner on Sunday.



Shambles, York.

SOUTHPORT AND BLACKPOOL ILLUMINATIONS (long weekend) £12.25

The Illuminations stretch six miles along Blackpool Promenade and Pleasure Beach. Colourful garlands of fairy lights and rainbow fountains contribute to 'the greatest free show on earth'. Giant tableaux bring old legends to life and the atmosphere is enhanced by the illuminated Tower, transformed tramcars, Thunderbird, a Mississippi paddle steamer, an American pioneer train and H.M.S. Blackpool.



Friday evening M1 and M6 (two refreshment stops), arrive at the Brunswick Hotel, Southport at approximately midnight for supper before the overnight stay.

Saturday After breakfast, morning at leisure in Southport - Lord Street, 'the shopping centre of the North', the broad golden sands, beautiful gardens, Venetian-style boating lake, pier and amusement park may be explored. After lunch, excursion to Blackpool - promenade drive and several hours to view the Illuminations and other attractions before returning to Southport for the second night.

Sunday After breakfast, morning at leisure and early lunch to depart by 1400. Return via the Derbyshire Peaks and Dovedale (stop at foot of Thorpe Cloud), two refreshment stops, return to Epsom at approximately 2200.

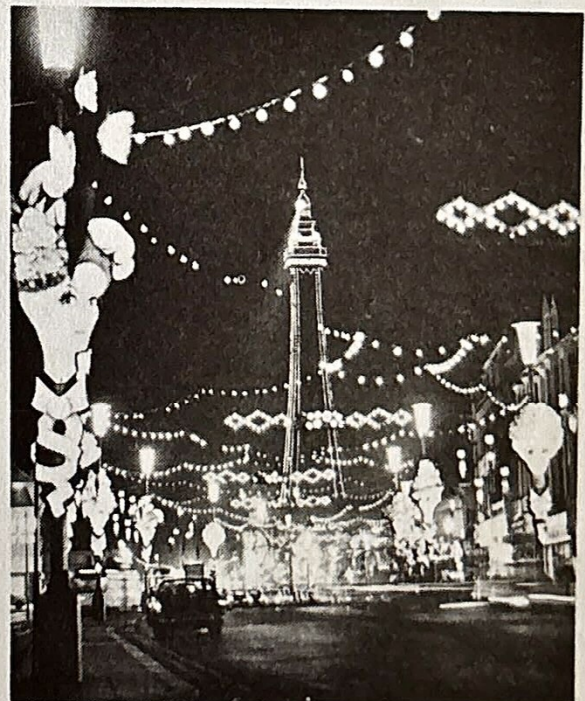
Brunswick Hotel, Southport (Telephone 55558).** Well situated in Lord Street and only a few minutes from the sea, central heating, lift, night porter, all bedrooms with telephones and radios, television lounge, ballroom.

Departures:-

Fridays,	29th	September
	6th	October
	13th	October
	20th	October

Picking-up points and times:-

Cobham	1620
Stoke d'Abernon	1625
Fetcham	1630
Great Bookham	1635
Leatherhead	1645
Ashted	1650
Epsom	1700
Longmead	1705
Ewell	1710



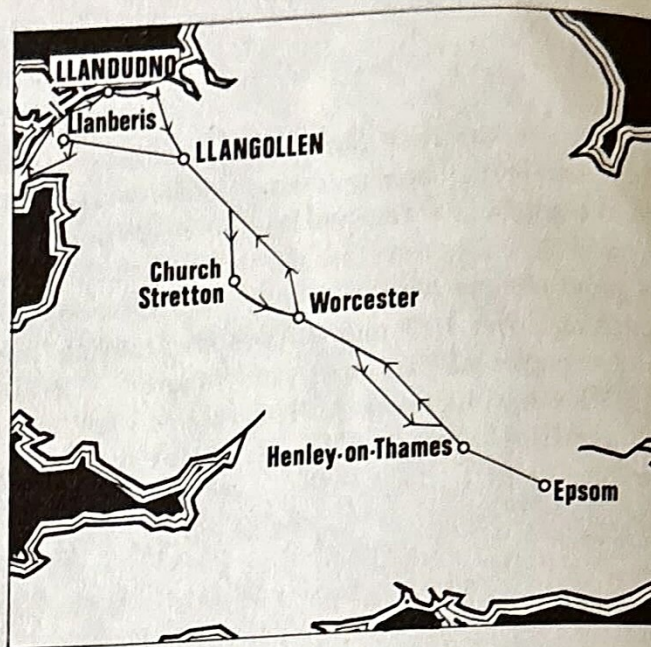
Blackpool Illuminations

Included in the fare:- all meals and accommodation from supper on Friday night to lunch on Sunday but excluding dinner on Saturday night.

NORTH WALES AND SNOWDONIA (3 days)

£18.00

- Thames Valley
- Chiltern Hills
- Cotswold Hills
- Vale of Evesham
- Severn Valley
- Wenlock Edge
- Vale of Llangollen
- Snowdonia
- Llanberis Pass
- Tremadoc Bay
- Caernarvon Bay
- Valley of Clwyd
- Horse Shoe Pass
- Vale of White Horse



Friday Hampton Court, Henley-on-Thames, Woodstock, Moreton-in-Marsh, Broadway, Pershore, Worcester (lunch at the Star Hotel), Kidderminster, Bridgnorth, Much Wenlock, Whittington, Chirk, Llangollen (Hand Hotel).

Saturday Llangollen, Corwen, Betws-y-coed, Swallow Falls, Capel Curig, Llanberis (lunch at the Royal Victoria Hotel at the foot of Snowdon), Beddgelert, Tremadoc, Criccieth, Pwllheli, Caernarvon, Menai Bridge, Llanfair P.G., Bangor, Conway, Llandudno (Imperial Hotel).

Sunday Llandudno, Colwyn Bay, Abergele, St. Asaph, Denbigh, Ruthin, Llangollen, Church Stretton (lunch at the Chalet Pavilion in Carding Mill Valley), Ludlow, Leominster, Bromyard, Stow-on-the-Wold, Burford, Witney, Abingdon, Henley-on-Thames (dinner at the Imperial Hotel), return to Epsom at approximately 2130.

Hand Hotel*, Llangollen (Telephone 2303).** Surrounded by gardens leading down to the River Dee, originally a coaching house, night porter, television.

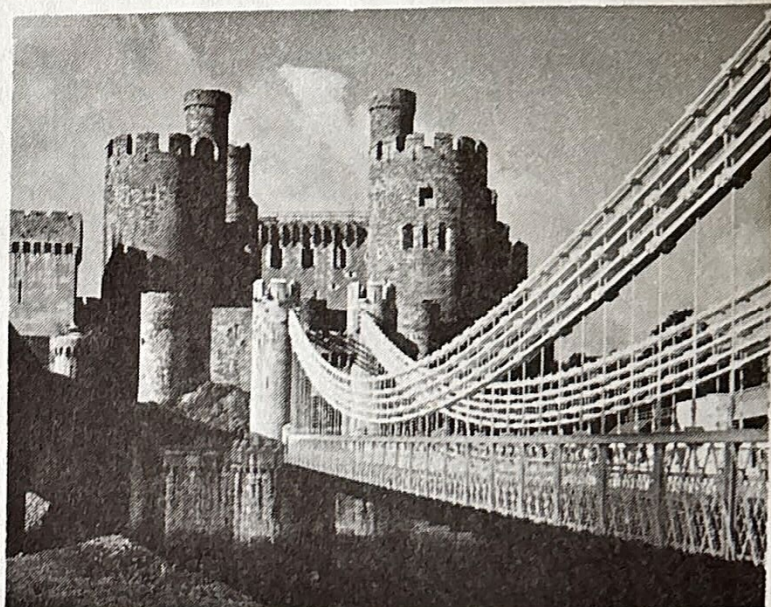
Imperial Hotel*, Llandudno (Telephone 77466).** Overlooking the Promenade and only two minutes from the shopping centre, ballroom with resident orchestra except during May, billiards room, table tennis, all bedrooms with radios and telephones, lift, television, night porter.

Departures:-

Fridays,	26th	May
	23rd	June
	28th	July
	1st	September

Picking-up points and times:-

Cobham	0700
Great Bookham	0710
Leatherhead	0715
Ashted	0720
Epsom	0730
Longmead	0735
Ewell	0740



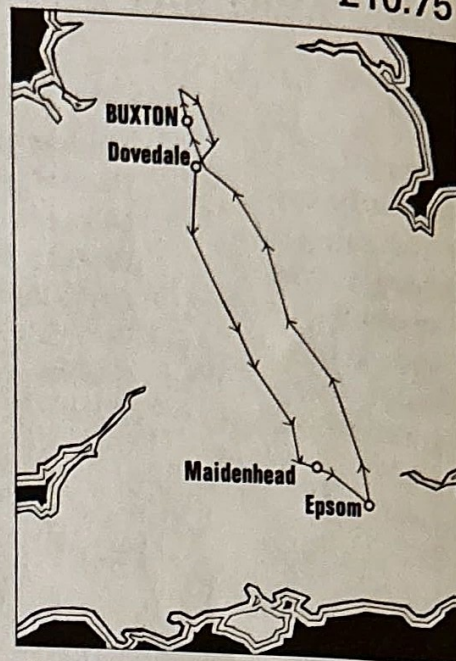
Conway Castle

Included in the fare:- all meals and accommodation from lunch on Friday to dinner on Sunday.

DERBYSHIRE PEAKS AND DOVEDALE (2 days)

£10.75

Derbyshire Peaks
Lonydendale
Langsett Reservoir
Hollow Meadows
Hallam Moors
Dovedale
Needwood Forest
Trent Valley
Chiltern Hills
Thames Valley



Wednesday Derby, Ashbourne, Buxton (lunch at the Palace Hotel), afternoon free to see the Well Dressing - an ancient custom of the Peak District also observed by many villages in which wells are decorated with elaborate designs of flower petals, grasses, and other vegetation pressed into a backing of soft clay and blessed at a special service.

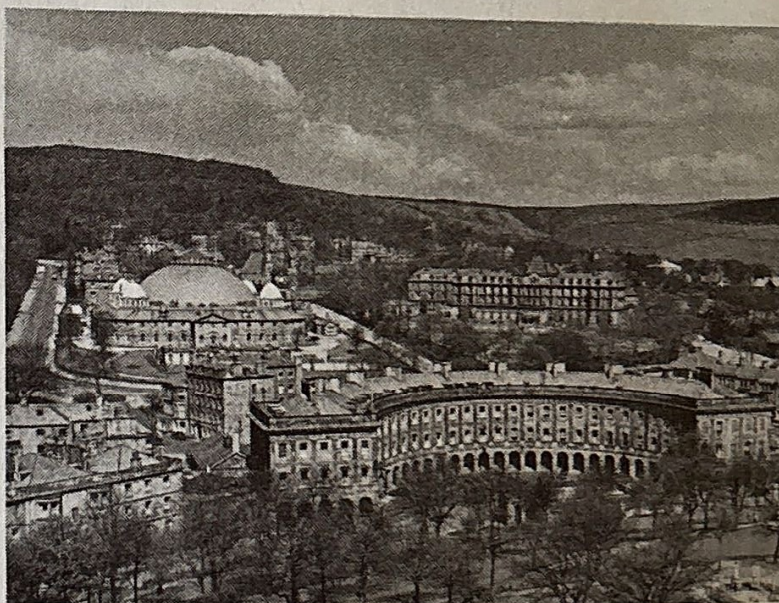
Thursday Buxton, Chapel-en-le-Frith, Hayfield, Glossop, Langsett, Stocksbridge, Hathersage, Bakewell (stop at original Bakewell tart shop), Matlock, Tissington, Thorpe (lunch at the Peveril of the Peak Hotel in the heart of Dovedale), Lichfield, Coleshill, Kenilworth, Royal Leamington Spa, Banbury Cross, Bicester, Thame, Henley-on-Thames, Maidenhead (dinner at the Thames Hotel overlooking the river), return to Epsom at approximately 2130.

Palace Hotel*, Buxton (Telephone 2001).** Centrally located dominating the town, central heating, lift, night porter, all bedrooms with radios and telephones, television, sun terrace, ballroom, indoor heated swimming pool, billiard room, table tennis room, putting green.

Departure:- Wednesday, 12th July

Picking-up points and times:-

Cobham	0700
Great Bookham	0710
Leatherhead	0715
Ashted	0720
Epsom	0730
Longmead	0735
Ewell	0740



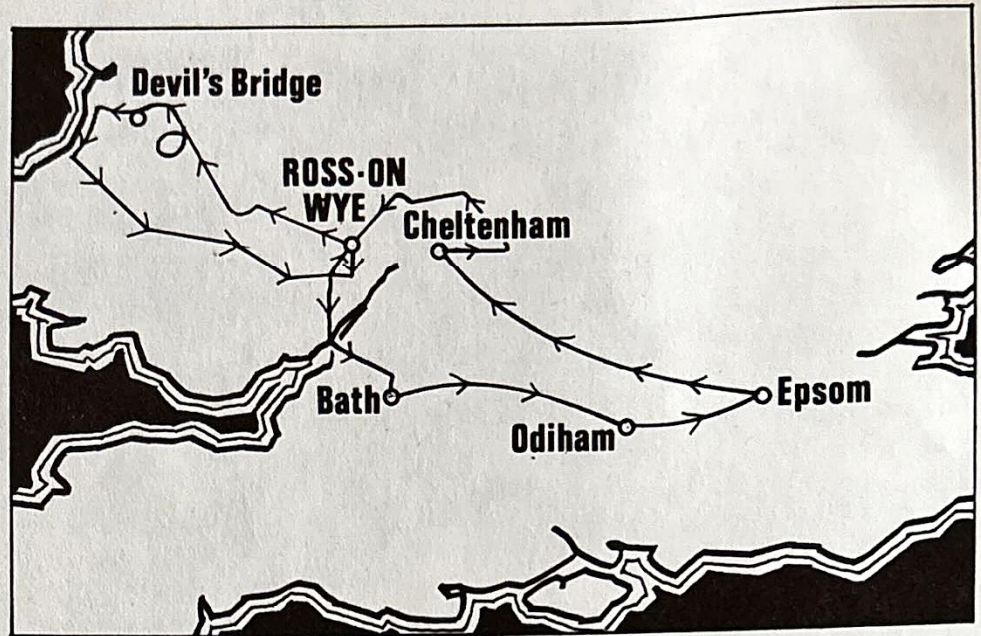
Buxton

Included in the fare:- all meals and accommodation from lunch on Wednesday to dinner on Thursday.

COTSWOLDS, WELSH VALLEYS AND SOMERSET (3 days)

£16.50

Thames Valley
 Berkshire Downs
 Vale of White Horse
 Cotswold Hills
 Vale of Evesham
 Malvern Hills
 Golden Valley
 Elan Valley
 Rheidol Valley
 Cardigan Bay
 Wye Valley
 Forest of Dean
 Marlborough Downs



Tuesday Wokingham, Reading, Streatley, Wantage, Faringdon, Lechlade, Cirencester, Cheltenham Spa (lunch at the Hotel Majestic), Bourton-on-the-Water, Stow-on-the-Wold, Broadway, Evesham, Pershore, Upton-on-Severn, Great Malvern, Malvern Wells, Ledbury, Ross-on-Wye (Chase Hotel).
Wednesday Ross-on-Wye, Hay-on-Wye, Rhayader, Elan Village, Llangurig, Devil's Bridge (lunch at the Hafod Arms Hotel overlooking the Rheidol Valley), Aberayron, Lampeter, Llandovery, Sennybridge, Brecon, Crickhowell, Abergavenny, Raglan, Monmouth, Ross-on-Wye (Chase Hotel).
Thursday Ross-on-Wye, Symond's Yat, Coleford, Tintern Abbey, Severn Bridge, Bath (lunch at Pratt's Hotel), Chippenham, Calne, Marlborough, Hungerford, Newbury, Odiham (dinner at the George Hotel), return to Epsom at approximately 2115.

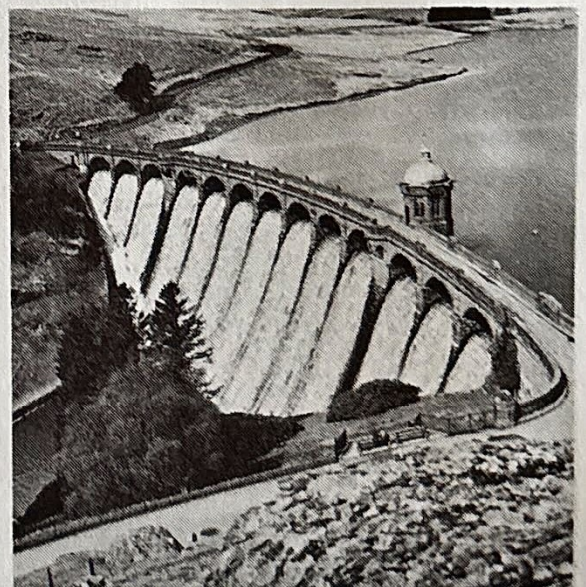
Chase Hotel*, Ross-on-Wye (Telephone 3161).** Formerly a Georgian country house, situated in 11 acres of beautiful grounds with flower gardens, lawns and a paddock, only a few minutes walk from the shopping centre, A.A. rosette for good food, central heating, night porter, colour television, all bedrooms with inter-com and radio.

Departures:- Tuesdays, 27th June
 19th September

Picking-up points and times:-

Ewell	0720
Longmead	0725
Epsom	0730
Ashtead	0740
Leatherhead	0745
Fetcham	0750
Stoke d'Abernon	0755
Cobham	0800

Included in the fare:- all meals and accommodation from lunch on Tuesday to dinner on Thursday.

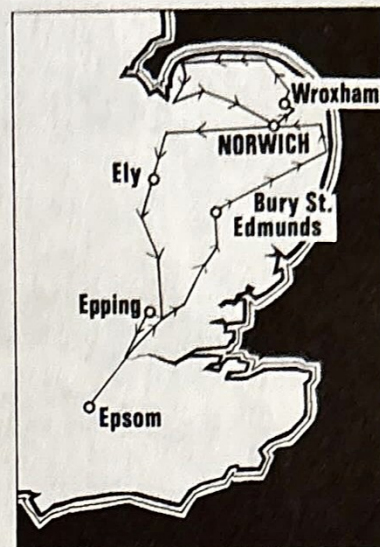


Elan Valley Reservoir

NORWICH AND NORFOLK BROADS (3 days)

£18.75

Norfolk is largely flat, rich agricultural land. There are still windmills in low-lying areas and in the summer, cornfields are ablaze with poppies. Norwich, the county town, was once a centre of the worsted trade. The Broads (stretches of water linked by rivers) are to the north-east of Norwich and cover over 200 miles of inland waterways.



Friday Chigwell, Ongar, Chelmsford, Braintree, Halstead, Sudbury, (Gainsborough's birthplace), Lavenham (old 'Wool' town rich in ancient timbered houses), Bury St. Edmunds (lunch at the Angel Hotel near the Abbey Gardens), Ixworth, Harleston, Bungay, Beccles, Lowestoft, Great Yarmouth (celebrated for herring fishing), Norwich (Royal Hotel).

Saturday Norwich, Ranworth (board boat for excursion on the Broads - Horning, Salhouse Broad, Wroxham Broad), Wroxham (lunch at the Riverside Restaurant), North Walsham, Cromer, Wells-next-the-Sea, Hunstanton, Sandringham (stop to visit the Church attended by the Royal Family), King's Lynn, Fakenham, Norwich (Royal Hotel).

Sunday Norwich, East Dereham, Swaffham, Downham Market, Littleport, Ely (lunch at the Lamb Hotel near the Cathedral), Cambridge, Stump Cross, Saffron Walden, Thaxted, Great Dunmow, Roding villages, Epping (dinner at the Alba Restaurant), return to Epsom at approximately 2115.

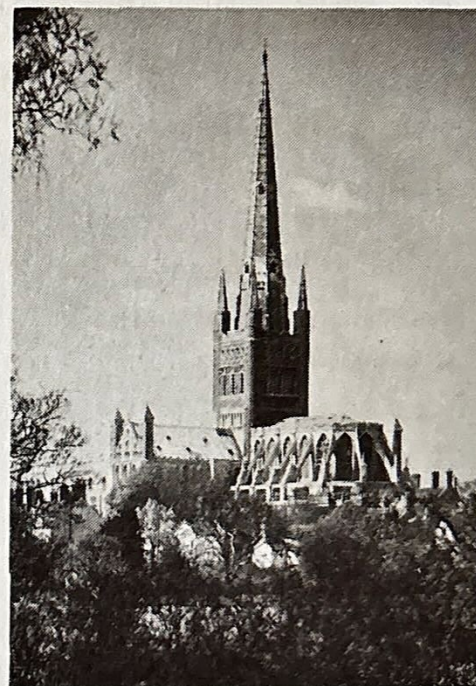
Royal Hotel*, Norwich (Telephone 28434).** Centrally located in Agricultural Hall Plain near the main shopping centre and the Cathedral, central heating, lift, night porter, all bedrooms with telephones and radios, colour television.

Departure:- Friday, 18th August.

Picking-up points and times:-

Cobham	0700
Great Bookham	0710
Leatherhead	0715
Ashtead	0720
Epsom	0730
Longmead	0735
Ewell	0740

Included in the fare:- all meals and accommodation from lunch on Friday to dinner on Sunday and the boat excursion on the Norfolk Broads.



Norwich Cathedral

BOURNEMOUTH AND NEW FOREST (long weekend)

£10.00

Friday Hog's Back, Alton, Alresford, Romsey, Ower, Cadnam, Ringwood, Bournemouth (Pinehurst Hotel).

Saturday Morning at leisure - opportunity for shopping. Afternoon tour - across Shell Bay by chain ferry to the Isle of Purbeck, Studland, Corfe Castle, Swanage, Wareham, Upton, Poole, Bournemouth (Pinehurst Hotel).

Sunday Morning at leisure - opportunity for sightseeing. After lunch, leave Bournemouth, Christchurch, Lymington, across the New Forest to Lyndhurst, Cadnam, return to Epsom at approximately 1800.

Pinehurst Hotel**, Bournemouth (Telephone 26218). Close to West Cliff, lift, night porter, central heating throughout, large lounges, colour television, every bedroom with radio.

Departure:- Friday, 10th March.

Picking-up points and times:-

Walton-on-the-Hill	1330
Ewell	1350
Longmead	1355
Epsom	1400
Ashtead	1410
Leatherhead	1415
Fetcham	1420
Stoke d'Abernon	1425
Cobham	1430

Included in the fare:- all meals and accommodation from dinner on Friday to lunch on Sunday.



New Forest ponies.

ISLE OF WIGHT (3 days)

£17.75

Friday Hog's Back, Alton, Alresford, Southampton (lunch), Red Funnel Steamer from Royal Pier to East Cowes via Southampton Water and the Solent, short drive to Ryde (Yelf's Hotel).

Saturday Morning at leisure. Afternoon tour - Whitefield Woods, Brading, Yaverland, coastal road to Sandown, Cowlease Hill, Bonchurch, Ventnor, St. Lawrence, Blackgang, military road to Brook, Freshwater, Alum Bay, Totland, Yarmouth, Shalfleet, across Parkhurst Forest, Newport, Wootton Bridge, Binstead, Ryde (Yelf's Hotel).

Sunday Morning at leisure. After lunch, leave Ryde, Carisbroke Castle, Whippingham Church, Osborne House, East Cowes, Red Funnel Steamer back to Southampton, return to Epsom at approximately 2130.

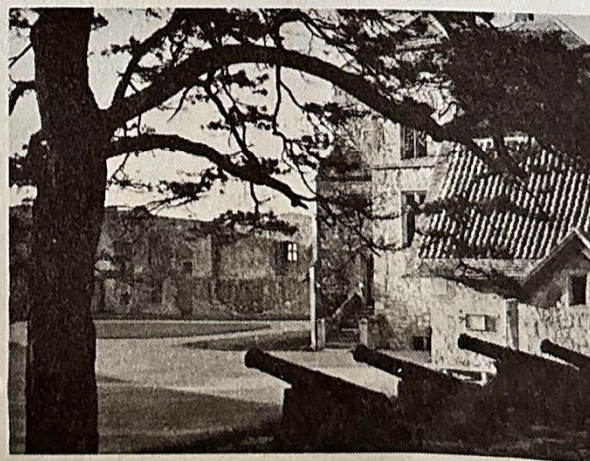
Yelf's Hotel**, Ryde (Telephone 4062). In the town centre and very near the Esplanade, television.

Departure:- Friday, 22nd September.

Picking-up points and times:-

Ewell	0920
Longmead	0925
Epsom	0930
Ashtead	0940
Leatherhead	0945
Fetcham	0950
Stoke d'Abernon	0955
Cobham	1000

Included in the fare:- all meals and accommodation from lunch on Friday to lunch on Sunday, steamer fares and coach travel in the Isle of Wight.

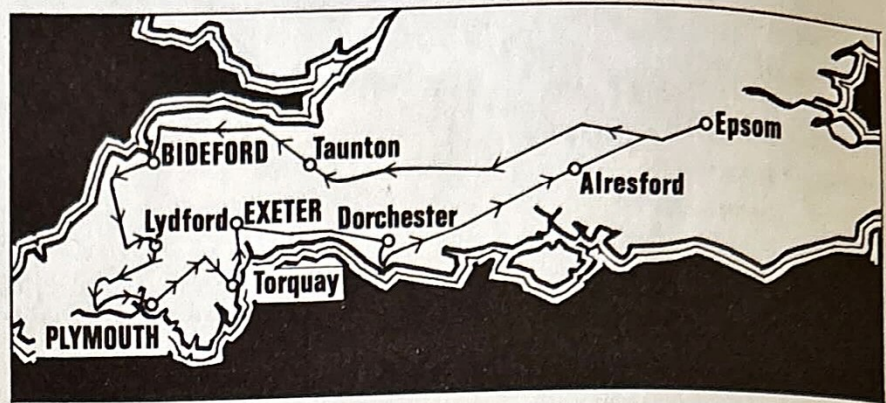


Carisbroke Castle.

NORTH AND SOUTH DEVON (4 days)

£25.00

- Vale of Wardour
- Vale of Taunton Deane
- Quantock Hills
- Exmoor
- Bideford Bay
- North Devon coast
- Dartmoor
- Tamar Bridge
- Torbay
- Babbacombe Bay
- South Dorset Downs
- New Forest



Friday Hog's Back, Odiham, Stockbridge, Salisbury, Wilton, Mere, Wincanton, Sparkford, Langport, Taunton (lunch at the County Hotel), Dunston, Luckwell Bridge, Exford, Simonsbath, Blackmoor Gate, Barnstaple, Bideford (Tanton's Hotel).

Saturday Bideford, Clovelly, Launceston, Bridestowe, Lydford (lunch at the Dartmoor Inn), Tavistock, Liskeard, Polperro, Saltash, across Tamar Bridge, Plymouth (Continental Hotel).

Sunday Plymouth, Yelverton, Two Bridges, Dartmeet, Postbridge, Moretonhampstead, Bovey Tracey, Newton Abbot, Torquay (lunch at the Palm Court Hotel overlooking Tor Bay), Teignmouth, Dawlish, Exeter (Royal Clarence Hotel).

Monday Exeter, Sidford, Lyme Regis, Bridport, Dorchester (lunch at the Antelope Hotel), Weymouth, Bere Regis, Wimborne Minster, Ringwood, Romsey, Alresford (dinner at the Bell Hotel), return to Epsom at approximately 2130.

Tanton's Hotel**, Bideford (Telephone 3317). Overlooking the River Torridge with its 24 arch bridge, lift, night porter, television, telephones in all bedrooms.

Continental Hotel***, Plymouth (Telephone 68515). Between the new shopping centre and the Hoe, lift, night porter, central heating, television.

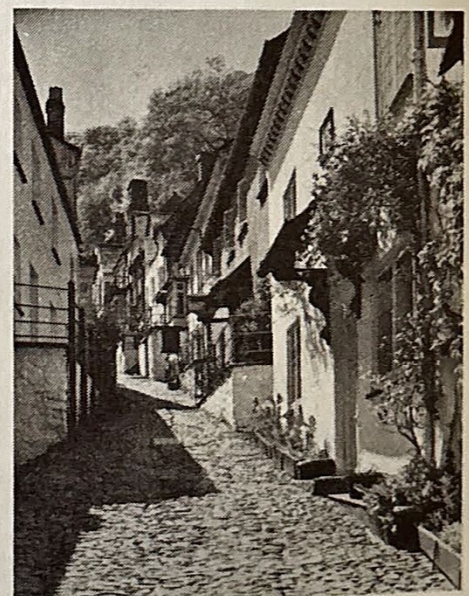
Royal Clarence Hotel***, Exeter (Telephone 58464). Overlooking the Cathedral, originally an eighteenth century coaching house, television, lift, night porter, central heating, all bedrooms with telephones.

Departures:- Fridays, 31st March
 12th May
 7th July
 25th August

Picking-up points and times:-

Ewell	0720
Longmead	0725
Epsom	0730
Ashtead	0740
Leatherhead	0745
Fetcham	0750
Stoke d'Abernon	0755
Cobham	0800

Included in the fare:- all meals and accommodation from lunch on Friday to dinner on Monday.

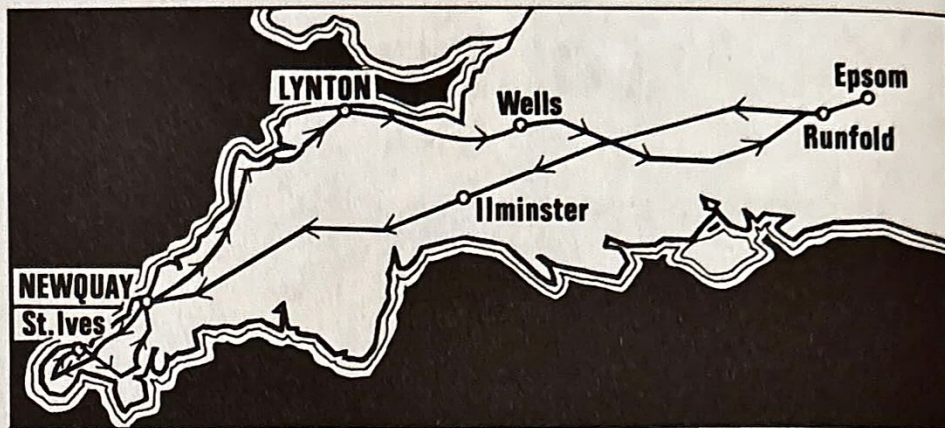


Clovelly

CORNISH RIVIERA AND LAND'S END (4 days)

£25.00

- Salisbury Plain
- Dartmoor
- Bodmin Moor
- Newquay Bay
- Mounts Bay
- Land's End
- St. Ives Bay
- Falmouth Bay
- Bude Bay
- Bideford Bay
- Valley of the Rocks
- Lynmouth Bay
- Exmoor
- Quantock Hills
- Polden Hills
- Mendip Hills



Friday Andover, Amesbury, Wincanton, Ilminster (lunch at the George Hotel), Okehampton, Launceston, Bodmin, Newquay (Victoria Hotel).

Saturday Newquay, Portreath, Hayle, Canon's Town, view of St. Michael's Mount, Penzance, Land's End, coastal road to St. Ives (lunch at St. Ives Bay Hotel), Helston, Falmouth, Truro, Newquay (Victoria Hotel).

Sunday Morning free in Newquay (lunch at the Victoria Hotel), Wadebridge, Camelford, Bude, Clovelly, Westward Ho!, Bideford, Barnstaple, Blackmoor Gate, Lynton (Valley of the Rocks Hotel).

Monday Lynton, Porlock, Minehead, Bridgwater, Street, Glastonbury, Wells (lunch at the Star Hotel), Shepton Mallet, Frome, Warminster, Salisbury, Stockbridge, Runfold (dinner at the Hog's Back Hotel), return to Epsom at approximately 2115.

Victoria Hotel, Newquay (Telephone 2255). In the town centre, surrounded by gardens extending almost to the cliff edge, panoramic view of bay, harbour and rugged Atlantic coast, unique lift communicates with all floors and tunnels through the rocks of the towering cliffs to the beach, night porter.

Valley of the Rocks Hotel, Lynton (Telephone 2349).** In spacious grounds overlooking Exmoor Hills and Lynmouth Bay, lift, night porter, television, billiards room, ballroom, galleried entrance hall.

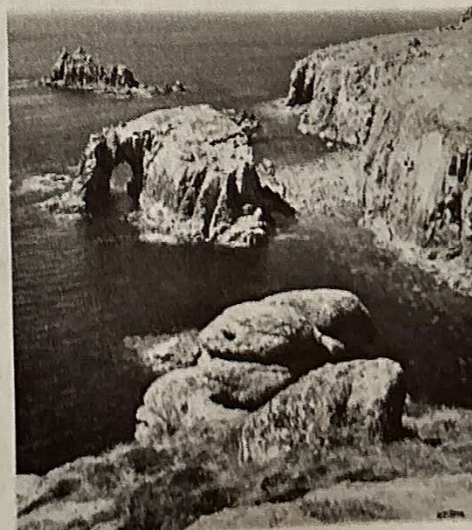
Departures:-

Fridays,	19th	May
	16th	June
	8th	September

Picking-up points and times:-

Ewell	0720
Longmead	0725
Epsom	0730
Ashtead	0740
Leatherhead	0745
Fetcham	0750
Stoke d'Abernon	0755
Cobham	0800

Included in the fare:- all meals and accommodation from lunch on Friday to dinner on Monday.



Land's End

CLIFTONVILLE (8 day centred holiday)

Endcliffe Hotel**, (Telephone Thanet 21829). Overlooking the sea and the Oval, lift, night porter, all bedrooms with intercoms radios and heaters, television lounge, games facilities ballroom, entertainment.

Departures and fares:-	Saturdays, 27th May to 24th June	£24.00
	Saturdays, 1st July to 26th August	£25.00
	Saturday, 2nd September	£24.00

Picking-up points and times:- as for the Canterbury and Thanet coastal express in the other brochure.
Included in the fare:- coach travel to and from Cliftonville, full board for seven days and lunch on the last day.

WORTHING (8 day centred holiday)

Front room	£31.50
Back room	£30.50

Ardington Hotel**, (Telephone 30451). Overlooking Steyne Gardens, adjacent to the promenade and very central for shops and all entertainments, recently extended modernised and re-furnished, central heating, night porter, television, all bedrooms with radios.

Departures:- Saturdays, 27th May to 23rd September

Picking-up points and times:- as for Brighton and Worthing express in the other brochure.

Included in the fare:- coach travel to and from Worthing, full board for seven days and lunch on the last day.

THIS HOLIDAY MAY ONLY BE BOOKED THROUGH EPSOM TRAVEL OR CRESCENT TRAVEL (LEATHERHEAD).

CONDITIONS OF BOOKING

- 1. Payment.** A deposit of £3.00 per person per tour or holiday must be paid to ensure booking. The balance must be paid by three weeks prior to departure.
- 2. Children's fares.** Children's fares are subject to a special quotation.
- 3. Cancellation charges.** Cancellation within six weeks of departure will result in forfeiture of the deposit. Cancellation within four weeks of departure may incur an additional amount to cover hotel and other expenses.
- 4. Cancellation of scheduled services.** The Company reserves the right to alter or cancel any part of the services advertised in this brochure, although every attempt will be made to adhere to what is publicised.
- 5. Road service licenses.** Some of the services advertised in this brochure are awaiting the approval of the Traffic Commissioners.
- 6. Failure to travel.** In the event of any passenger not being carried due to the negligence of the Company or its agents, no liability beyond refund of the amount paid will be accepted.
- 7. Stops.** At stops, unless passengers board the coach by the time specified by the driver, no responsibility will be accepted for their being left behind.
- 8. Inclusive arrangements.** The Company is not responsible for loss, damage, injury, delays or inconvenience caused where inclusive arrangements have been made with other companies (hotels, aircraft, ferries, boats etc.)
- 9. Luggage and personal belongings.** All luggage and personal belongings are carried at owners' risk. Under Public Service Vehicle Regulations a fee has to be paid for any lost property recorded in the Company's Register, and subsequently claimed from the Lost Property Office. The fee will comprise an administration charge and a reward (relative to the value), to be given to the finder of the article.
- 10. Seat numbers.** In the case of clerical errors, or where it has been necessary to substitute a coach with different seat numbers, no liability can be accepted for passengers having to sit in seats which differ from those indicated on the ticket.
- 11. Animals.** No animals are allowed to travel on any of the services advertised in this brochure.
- 12. Sound reproduction.** The playing of radios, record-players, tape-recorders and musical instruments is prohibited.

PROGRAMME

MARCH	Page	
Friday, 10th	11	Bournemouth and New Forest (long weekend)
Friday, 31st	12	North and South Devon (4 days)
MAY		
Friday, 12th	12	North and South Devon (4 days)
Friday, 19th	13	Cornish Riviera and Land's End (4 days)
Friday, 26th	7	North Wales and Snowdonia (3 days)
JUNE		
Thursday, 1st	2	Loch Lomond, Trossachs and Edinburgh (4 days)
Tuesday, 6th	3	Morecambe Bay and English Lakes (3 days)
Friday, 16th	13	Cornish Riviera and Land's End (4 days)
Friday, 23rd	7	North Wales and Snowdonia (3 days)
Tuesday, 27th	9	Cotswolds, Welsh Valleys and Somerset (3 days)
JULY		
Friday, 7th	12	North and South Devon (4 days)
Wednesday, 12th	8	Derbyshire Peaks and Dovedale (2 days)
Thursday, 13th	2	Loch Lomond, Trossachs and Edinburgh (4 days)
Tuesday, 18th	3	Morecambe Bay and English Lakes (3 days)
Friday, 28th	7	North Wales and Snowdonia (3 days)
AUGUST		
Friday, 4th	5	Yorkshire Dales (3 days)
Thursday, 10th	2	Loch Lomond, Trossachs and Edinburgh (4 days)
Friday, 18th	10	Norwich and Norfolk Broads (3 days)
Friday, 25th	12	North and South Devon (4 days)
Tuesday, 29th	3	Morecambe Bay and English Lakes (3 days)
SEPTEMBER		
Friday, 1st	7	North Wales and Snowdonia (3 days)
Friday, 8th	13	Cornish Riviera and Land's End (4 days)
Thursday, 14th	2	Loch Lomond, Trossachs and Edinburgh (4 days)
Tuesday, 19th	9	Cotswolds, Welsh Valleys and Somerset (3 days)
Friday, 22nd	11	Isle of Wight (long weekend)
Friday, 29th	4	Isle of Man (4 days)
	6	Southport and Blackpool Illuminations (long weekend)
OCTOBER		
Friday, 6th	6	Southport and Blackpool Illuminations (long weekend)
Friday, 13th	6	Southport and Blackpool Illuminations (long weekend)
Friday, 20th	6	Southport and Blackpool Illuminations (long weekend)

Express Services, Excursions and Tours

A new illustrated brochure with revised format covering express services, excursions and tours will be published in February.

H.R. RICHMOND LIMITED

BLENHEIM ROAD, EPSOM, SURREY

Telephone 27821